



**THE DATASHEET OF
MAX4750EBE+T**





50Ω, Low-Voltage, Quad SPST/Dual SPDT Analog Switches in WLP

MAX4747-MAX4750

General Description

The MAX4747-MAX4750 low-voltage, quad single-pole single-throw (SPST)/dual single-pole/double-throw (SPDT) analog switches operate from a single +2V to +11V supply and handle rail-to-rail analog signals. These switches exhibit low leakage current (0.1nA) and consume less than 0.5nW (typ) of quiescent power, making them ideal for battery-powered applications.

When powered from a +3V supply, these switches feature 50Ω (max) on-resistance (R_{ON}), with 3.5Ω (max) matching between channels and 9Ω (max) flatness over the specified signal range.

The MAX4747 has four normally open (NO) switches, the MAX4748 has four normally closed (NC) switches, and the MAX4749 has two NO and two NC switches. The MAX4750 has two SPDT switches. These switches are available in 14-pin TSSOP, 16-pin QFN (4mm x 4mm), and 16-bump WLP packages. This tiny chip-scale package occupies a 2mm x 2mm area and significantly reduces the required PC board area.

Applications

- Battery-Powered Systems
- Audio/Video-Signal Routing
- Low-Voltage Data-Acquisition Systems
- Cell Phones
- Communications Circuits
- Glucose Meters
- PDAs

Features

- ◆ 2mm x 2mm WLP
- ◆ Guaranteed On-Resistance (R_{ON})
 - 25Ω (max) at +5V
 - 50Ω (max) at +3V
- ◆ On-Resistance Matching
 - 3Ω (max) at +5V
 - 3.5Ω (max) at +3V
- ◆ Guaranteed < 0.1nA Leakage Current at T_A = +25°C
- ◆ Single-Supply Operation from +2.0V to +11V
- ◆ TTL/CMOS-Logic Compatible
- ◆ -84dB Crosstalk (1MHz)
- ◆ -72dB Off-Isolation (1MHz)
- ◆ Low Power Consumption: 0.5nW (typ)
- ◆ Rail-to-Rail Signal Handling

Ordering Information

| PART | TEMP RANGE | PIN-/BUMP-PACKAGE |
|--------------|----------------|-------------------|
| MAX4747EUD+ | -40°C to +85°C | 14 TSSOP |
| MAX4747ETE+ | -40°C to +85°C | 16 Thin QFN-EP* |
| MAX4747EWE+T | -40°C to +85°C | 16 WLP |

*EP = Exposed pad.

+Denotes a lead(Pb)-free/RoHS-compliant package.

T = Tape and reel.

Ordering Information continued at end of data sheet.

Pin/Bump Configurations/Truth Tables

TOP VIEW

TQFN

*CONNECT EP TO V+

TOP VIEW
(BUMPS SIDE DOWN)

TSSOP

| INPUT | SWITCH STATE |
|-------|--------------|
| LOW | OFF |
| HIGH | ON |

TOP VIEW

WLP

Pin Configurations/Truth Tables continued at end of data sheet.

50Ω, Low-Voltage, Quad SPST/Dual SPDT Analog Switches in WLP

ABSOLUTE MAXIMUM RATINGS

(All voltages referenced to GND.)

| | |
|---|---------------------------|
| V+ |-0.3V to +12V |
| IN ₋ , COM ₋ , NO ₋ , NC ₋ (Note 1) |-0.3V to (V+ + 0.3V) |
| Continuous Current (any pin) |±10mA |
| Peak Current (any pin, pulsed at 1ms, 10% duty cycle) |±20mA |
| Continuous Power Dissipation (T _A = +70°C) | |
| 14-Pin TSSOP (derate 9.1mW/°C above +70°C) |727mW |
| 16-Pin Thin QFN (derate 16.9mW/°C above +70°C) |1349mW |
| 16-Bump WLP (derate 7.3mW/°C above +70°C) |589mW |

| | |
|-----------------------------------|----------------------|
| Operating Temperature Range |-40°C to +85°C |
| Storage Temperature Range |-65°C to +150°C |
| Maximum Junction Temperature |+150°C |
| Bump Temperature (soldering) | |
| Infrared (15s) |+220°C |
| Vapor Phase (60s) |+215°C |
| Lead Temperature (soldering, 10s) |+300°C |
| Soldering Temperature (reflow) |+260°C |

Note 1: Signals on IN₋, NO₋, NC₋, or COM₋ exceeding V+ or GND are clamped by internal diodes. Limit forward-diode current to maximum current rating.

Stresses beyond those listed under "Absolute Maximum Ratings" may cause permanent damage to the device. These are stress ratings only, and functional operation of the device at these or any other conditions beyond those indicated in the operational sections of the specifications is not implied. Exposure to absolute maximum rating conditions for extended periods may affect device reliability.

ELECTRICAL CHARACTERISTICS—Single +3V Supply

(V+ = +3V ±10%, V_{IH} = +2.0V, V_{IL} = +0.8V, T_A = T_{MIN} to T_{MAX}, unless otherwise noted. Typical values are at V+ = +3V, T_A = +25°C.) (Notes 3, 4)

| PARAMETER | SYMBOL | CONDITIONS | T _A | MIN | TYP | MAX | UNITS |
|--|--|--|---|------|-----|------|-------|
| ANALOG SWITCH | | | | | | | |
| Analog Signal Range | V _{COM-} , V _{NO-} , V _{NC-} | | | 0 | | V+ | V |
| On-Resistance | R _{ON} | V+ = +2.7V, I _{COM-} = 5mA, V _{NO-} or V _{NC-} = +1.5V | +25°C | | 17 | 50 | Ω |
| | | | T _{MIN} to T _{MAX} | | | 60 | |
| On-Resistance Matching Between Channels (Notes 5, 6) | ΔR _{ON} | V+ = +2.7V, I _{COM-} = 5mA, V _{NO-} or V _{NC-} = +1.5V | +25°C | | 0.2 | 3.5 | Ω |
| | | | T _{MIN} to T _{MAX} | | | 4.5 | |
| On-Resistance Flatness (Note 7) | R _{FLAT(ON)} | V+ = +2.7V, I _{COM-} = 5mA, V _{NO-} or V _{NC-} = +1V, +1.5V, +2V | +25°C | | 2.7 | 9 | Ω |
| | | | T _{MIN} to T _{MAX} | | | 11 | |
| NO ₋ or NC ₋ Off-Leakage Current (Note 8) | I _{NO-(OFF)} , I _{NC-(OFF)} | V+ = +3.6V, V _{COM-} = +0.3V, +3V, V _{NO-} or V _{NC-} = +3V, +0.3V | +25°C | -0.1 | | +0.1 | nA |
| | | | T _{MIN} to T _{MAX} | | -2 | | |
| COM ₋ Off-Leakage Current (Note 8) | I _{COM-(OFF)} | V+ = +3.6V, V _{COM-} = +0.3V, +3V, V _{NO-} or V _{NC-} = +3V, +0.3V | +25°C | -0.1 | | +0.1 | nA |
| | | | T _{MIN} to T _{MAX} | | -2 | | |
| COM ₋ On-Leakage Current (Note 8) | I _{COM-(ON)} | V+ = +3.6V, V _{COM-} = +0.3V, +3.0V, V _{NO-} or V _{NC-} = +0.3V, +3V, or unconnected | +25°C | -0.2 | | +0.2 | nA |
| | | | T _{MIN} to T _{MAX} | | -4 | | |

50Ω, Low-Voltage, Quad SPST/Dual SPDT Analog Switches in WLP

MAX4747-MAX4750

ELECTRICAL CHARACTERISTICS—Single +3V Supply (continued)

(V+ = +3V ±10%, V_{IH} = +2.0V, V_{IL} = +0.8V, T_A = T_{MIN} to T_{MAX}, unless otherwise noted. Typical values are at V+ = +3V, T_A = +25°C.)
(Notes 3, 4)

| PARAMETER | SYMBOL | CONDITIONS | T _A | MIN | TYP | MAX | UNITS |
|---|------------------------|--|---|-----|--------|-----|-------|
| DYNAMIC | | | | | | | |
| Turn-On Time | t _{ON} | V _{NO_} or V _{NC_} = +1.5V, R _L = 300Ω, C _L = 35pF, Figure 2 | +25°C | 57 | 150 | | ns |
| | | | T _{MIN} to T _{MAX} | | | 170 | |
| Turn-Off Time | t _{OFF} | V _{NO_} or V _{NC_} = +1.5V, R _L = 300Ω, C _L = 35pF, Figure 2 | +25°C | 24 | 60 | | ns |
| | | | T _{MIN} to T _{MAX} | | | 70 | |
| Break-Before-Make (MAX4749/MAX4750 Only) (Note 8) | t _{BBM} | V _{NO_} or V _{NC_} = +1.5V, R _L = 300Ω, C _L = 35pF, Figure 3 | +25°C | | 33 | | ns |
| | | | T _{MIN} to T _{MAX} | 1 | | | |
| Charge Injection | Q | V _{GEN} = 0V, R _{GEN} = 0Ω, C _L = 1.0nF, Figure 4 | +25°C | | 7 | | pC |
| On-Channel -3dB Bandwidth | BW | Signal = 0dBm, 50Ω in and out | +25°C | | 250 | | MHz |
| Off-Isolation (Note 9) | V _{ISO} | f = 1MHz, V _{NO_} = 1V _{RMS} , R _L = 50Ω, C _L = 5pF, Figure 5 | +25°C | | -72 | | dB |
| Crosstalk (Note 10) | V _{CT} | f = 1MHz, V _{NO_} = 1V _{RMS} , R _L = 50Ω, C _L = 5pF, Figure 6 | +25°C | | 84 | | dB |
| NO_ or NC_ Off-Capacitance | C _{OFF} | f = 1MHz, Figure 7 | +25°C | | 20 | | pF |
| COM_ Off-Capacitance | C _{COM_(OFF)} | f = 1MHz, Figure 7 | +25°C | | 20 | | pF |
| COM_ On-Capacitance | C _{COM_(ON)} | f = 1MHz, Figure 7 | +25°C | | 40 | | pF |
| LOGIC INPUT | | | | | | | |
| Input Logic High | V _{IH} | | | 1.4 | | | V |
| Input Logic Low | V _{IL} | | | | | 0.8 | V |
| Input Leakage Current | I _{IN} | V _{IN_} = 0V or V+ | | -1 | +0.005 | +1 | μA |
| POWER SUPPLY | | | | | | | |
| Power-Supply Range | V+ | | | 2 | | 11 | V |
| Positive Supply Current | I+ | V+ = +5.5V, V _{IN_} = 0V or V+, all switches on or off | | | 0.0001 | 1 | μA |

50Ω, Low-Voltage, Quad SPST/Dual SPDT Analog Switches in WLP

ELECTRICAL CHARACTERISTICS—Single +5V Supply

(V+ = +5V ±10%, V_{IH} = +2.0V, V_{IL} = +0.8V, T_A = T_{MIN} to T_{MAX}, unless otherwise noted. Typical values are at V+ = +5V, T_A = +25°C.)
(Notes 3, 4)

| PARAMETER | SYMBOL | CONDITIONS | T _A | MIN | TYP | MAX | UNITS |
|--|---|---|---|------|-----|------|-------|
| ANALOG SWITCH | | | | | | | |
| Analog Signal Range | V _{COM_} , V _{NO_} , V _{N_{C_}} | | | 0 | | V+ | V |
| On-Resistance | R _{ON} | V+ = +4.5V, I _{COM_} = 5mA, V _{NO_} or V _{N_{C_}} = +3.0V | +25°C | | 8.2 | 25 | Ω |
| | | | T _{MIN} to T _{MAX} | | | 30 | |
| On-Resistance Matching Between Channels (Notes 5, 6) | ΔR _{ON} | V+ = +4.5V, I _{COM_} = 5mA, V _{NO_} or V _{N_{C_}} = +3.0V | +25°C | | 0.1 | 3 | Ω |
| | | | T _{MIN} to T _{MAX} | | | 4 | |
| On-Resistance Flatness (Notes 7) | R _{FLAT(ON)} | V+ = +4.5V, I _{COM_} = 5mA, V _{NO_} or V _{N_{C_}} = +1V, +2V, +3V | +25°C | | 2.2 | 5 | Ω |
| | | | T _{MIN} to T _{MAX} | | | 7 | |
| NO __ or NC __ Off-Leakage Current (Note 8) | I _{NO_(OFF)} , I _{NC_(OFF)} | V+ = +5.5V, V _{COM_} = +1V, +4.5V, V _{NO_} or V _{N_{C_}} = +4.5V, +1V | +25°C | -0.1 | | +0.1 | nA |
| | | | T _{MIN} to T _{MAX} | -2 | | +2 | |
| COM __ Off-Leakage Current (Note 8) | I _{COM_(OFF)} | V+ = +5.5V, V _{COM_} = +1V, +4.5V, V _{NO_} or V _{N_{C_}} = +4.5V, +1V | +25°C | -0.1 | | +0.1 | nA |
| | | | T _{MIN} to T _{MAX} | -2 | | +2 | |
| COM __ On-Leakage Current (Note 8) | I _{COM_(ON)} | V+ = +5.5V, V _{COM_} = +1V, +4.5V, V _{NO_} or V _{N_{C_}} = +1V, +4.5V, or unconnected | +25°C | -0.2 | | +0.2 | nA |
| | | | T _{MIN} to T _{MAX} | -4 | | +4 | |
| DYNAMIC | | | | | | | |
| Turn-On Time | t _{ON} | V _{NO_} or V _{N_{C_}} = +3.0V, R _L = 300Ω, C _L = 35pF, Figure 2 | +25°C | | 36 | 85 | ns |
| | | | T _{MIN} to T _{MAX} | | | 95 | |
| Turn-Off Time | t _{OFF} | V _{NO_} or V _{N_{C_}} = +3.0V, R _L = 300Ω, C _L = 35pF, Figure 2 | +25°C | | 19 | 45 | ns |
| | | | T _{MIN} to T _{MAX} | | | 55 | |
| Break-Before-Make (MAX4749/MAX4750 Only) (Note 8) | t _{B_{BB}} | V _{NO_} or V _{N_{C_}} = +3.0V, R _L = 300Ω, C _L = 35pF, Figure 3 | +25°C | | 14 | | ns |
| | | | T _{MIN} to T _{MAX} | 1 | | | |
| Charge Injection | Q | V _{GEN} = 0V, R _{GEN} = 0Ω, C _L = 1.0nF, Figure 4 | +25°C | | 9 | | pC |
| On-Channel -3dB Bandwidth | BW | Signal = 0dBm, 50Ω in and out | +25°C | | 250 | | MHz |
| Off-Isolation (Note 9) | V _{ISO} | f = 1MHz, V _{NO_} = 1V _{RMS} , R _L = 50Ω, C _L = 5pF, Figure 5 | +25°C | | -72 | | dB |

50Ω, Low-Voltage, Quad SPST/Dual SPDT Analog Switches in WLP

ELECTRICAL CHARACTERISTICS—Single +5V Supply (continued)

(V+ = +5V ±10%, V_{IH} = +2.0V, V_{IL} = +0.8V, T_A = T_{MIN} to T_{MAX}, unless otherwise noted. Typical values are at V+ = +5V, T_A = +25°C.)
(Notes 3, 4)

| PARAMETER | SYMBOL | CONDITIONS | T _A | MIN | TYP | MAX | UNITS |
|----------------------------|------------------------|---|----------------|-----|--------|-----|-------|
| Crosstalk (Note 10) | V _{CT} | f = 1MHz, V _{NO_} = 1V _{RMS} , R _L = 50Ω, C _L = 5pF, Figure 6 | +25°C | | -84 | | dB |
| NO_ or NC_ Off-Capacitance | C _{OFF} | f = 1MHz, Figure 7 | +25°C | | 20 | | pF |
| COM_ Off-Capacitance | C _{COM_(OFF)} | f = 1MHz, Figure 7 | +25°C | | 20 | | pF |
| COM_ On-Capacitance | C _{COM_(ON)} | f = 1MHz, Figure 7 | +25°C | | 40 | | pF |
| LOGIC INPUT | | | | | | | |
| Input Logic High | V _{IH} | | | 2 | | | V |
| Input Logic Low | V _{IL} | | | | | 0.8 | V |
| Input Leakage Current | I _{IN} | V _{IN_} = 0V or V+ | | -1 | +0.005 | +1 | μA |
| POWER SUPPLY | | | | | | | |
| Power-Supply Range | V+ | | | 2 | | 11 | V |
| Positive Supply Current | I+ | V+ = +5.5V, V _{IN_} = 0V or V+, all switches on or off | | | 0.0001 | 1 | μA |

Note 3: The algebraic convention, where the most negative value is a minimum and the most positive value a maximum, is used in this data sheet.

Note 4: WLP parts are 100% tested at +25°C only, and are guaranteed by design over temperature. TSSOP and Thin QFN parts are 100% tested at +85°C and guaranteed by design over temperature.

Note 5: ΔRON = RON(MAX) - RON(MIN).

Note 6: WLP and Thin QFN on-resistance matching between channels is guaranteed by design.

Note 7: Flatness is defined as the difference between the maximum and minimum value of on-resistance as measured over the specified analog signal range.

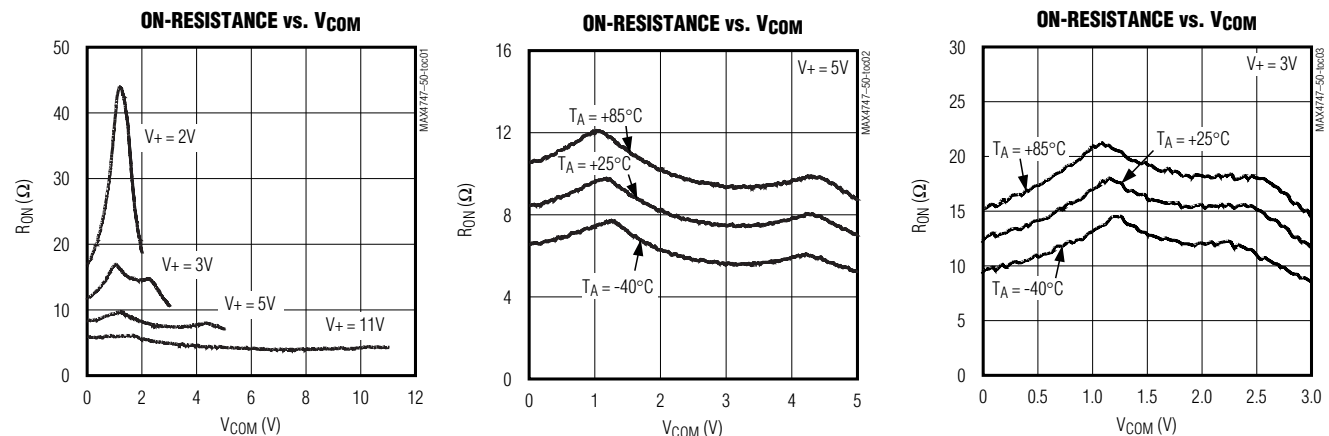
Note 8: Guaranteed by design.

Note 9: Off-isolation = 20 log₁₀ (V_{NO_/VCOM_}), V_{NO_} = output, V_{COM_} = input to off switch.

Note 10: Between any two switches.

Typical Operating Characteristics

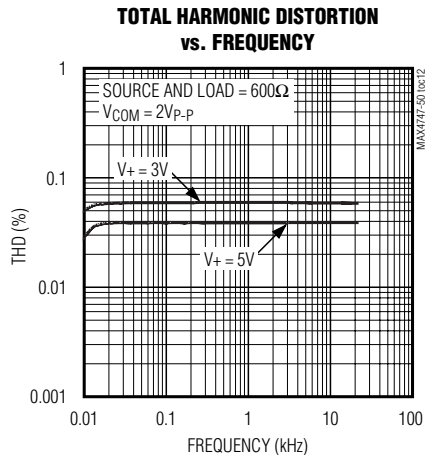
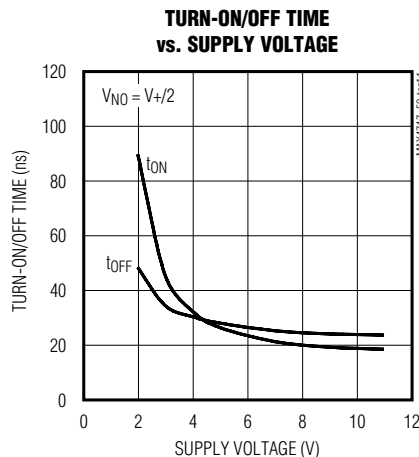
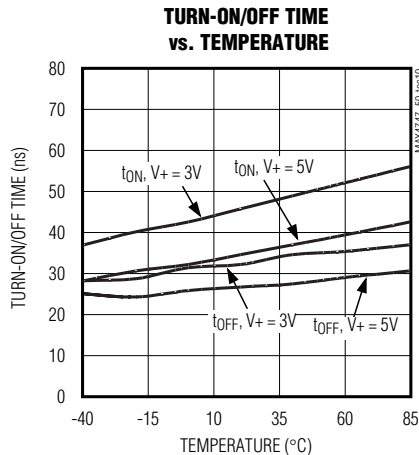
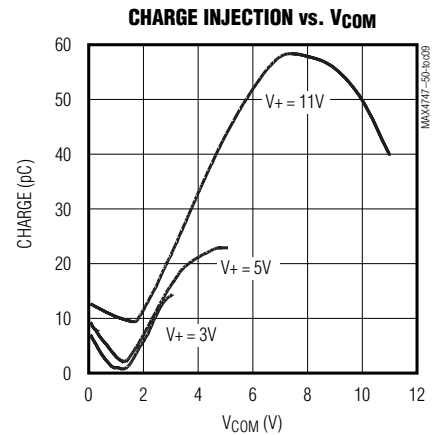
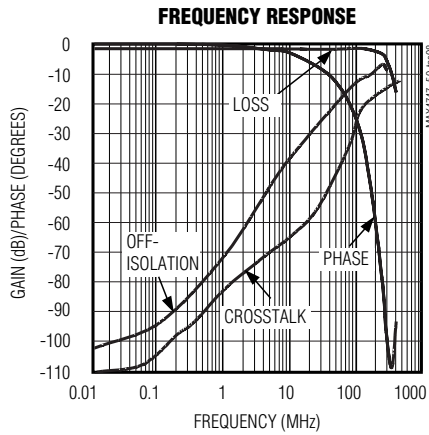
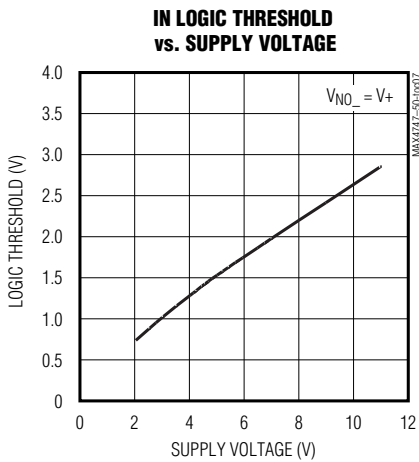
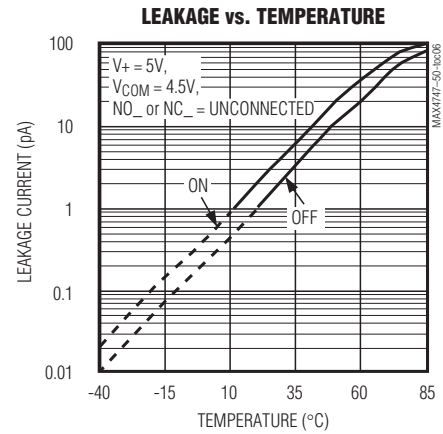
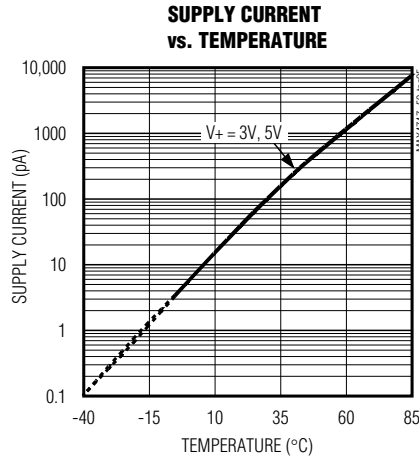
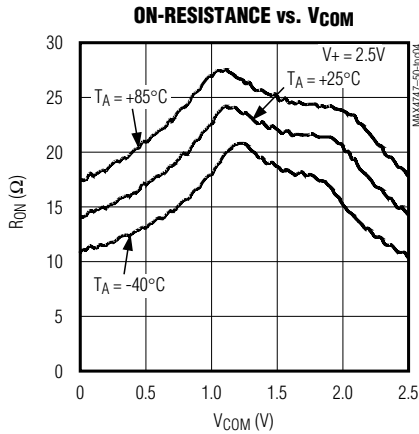
(T_A = +25°C, unless otherwise noted.)



50Ω, Low-Voltage, Quad SPST/Dual SPDT Analog Switches in WLP

Typical Operating Characteristics (continued)

(T_A = +25°C, unless otherwise noted.)



50Ω, Low-Voltage, Quad SPST/Dual SPDT Analog Switches in WLP

MAX4747-MAX4750

Pin Description—TSSOP

| PIN | | | | NAME | FUNCTION |
|--------------|--------------|--------------|--------------|------------|--|
| MAX4747 | MAX4748 | MAX4749 | MAX4750 | | |
| 1, 3, 8, 11 | — | — | — | NO1–NO4 | Analog-Switch Normally Open Terminals |
| — | 1, 3, 8, 11 | — | — | NC1–NC4 | Analog-Switch Normally Closed Terminals |
| — | — | 1, 8 | — | NO1, NO3 | Analog-Switch Normally Open Terminals |
| — | — | — | 1, 8 | NO1, NO2 | Analog-Switch Normally Open Terminals |
| — | — | — | 4, 11 | NC1, NC2 | Analog-Switch Normally Closed Terminals |
| — | — | 3, 11 | — | NC2, NC4 | Analog-Switch Normally Closed Terminals |
| 2, 4, 9, 10 | 2, 4, 9, 10 | 2, 4, 9, 10 | — | COM1–COM4 | Analog-Switch Common Terminal |
| — | — | — | 2, 9 | COM1, COM2 | Analog-Switch Common Terminal |
| 13, 5, 6, 12 | 13, 5, 6, 12 | 13, 5, 6, 12 | — | IN1–IN4 | Logic-Control Digital Input |
| — | — | — | 13, 6 | IN1, IN2 | Logic-Control Digital Input |
| 7 | 7 | 7 | 7 | GND | Ground. Connect to digital ground. |
| 14 | 14 | 14 | 14 | V+ | Positive Analog and Digital Supply Voltage Input. Internally connected to substrate. |
| — | — | — | 3, 5, 10, 12 | N.C. | No Connection. Not internally connected. |

Bump Description—WLP

| PIN | | | | NAME | FUNCTION |
|----------------|----------------|----------------|----------------|------------|--|
| MAX4747 | MAX4748 | MAX4749 | MAX4750 | | |
| B1, A2, C4, D2 | — | — | — | NO1–NO4 | Analog-Switch Normally Open Terminals |
| — | B1, A2, C4, D2 | — | — | NC1–NC4 | Analog-Switch Normally Closed Terminals |
| — | — | B1, C4 | — | NO1, NO3 | Analog-Switch Normally Open Terminals |
| — | — | — | B1, C4 | NO1, NO2 | Analog-Switch Normally Open Terminals |
| — | — | — | A3, D2 | NC1, NC2 | Analog-Switch Normally Closed Terminals |
| — | — | A2, D2 | — | NC2, NC4 | Analog-Switch Normally Closed Terminals |
| A1, A3, D4, D3 | A1, A3, D4, D3 | A1, A3, D4, D3 | — | COM1–COM4 | Analog-Switch Common Terminal |
| — | — | — | A1, D4 | COM1, COM2 | Analog-Switch Common Terminal |
| C1, A4, B4, D1 | C1, A4, B4, D1 | C1, A4, B4, D1 | — | IN1–IN4 | Logic-Control Digital Input |
| — | — | — | C1, B4 | IN1, IN2 | Logic-Control Digital Input |
| C3 | C3 | C3 | C3 | GND | Ground. Connect to digital ground. |
| B2 | B2 | B2 | B2 | V+ | Positive Analog and Digital Supply Voltage Input. Internally connected to substrate. |
| — | — | — | A2, A4, D1, D3 | N.C. | No Connection. Not internally connected. |

50Ω, Low-Voltage, Quad SPST/Dual SPDT Analog Switches in WLP

MAX4747-MAX4750

Pin Description—TQFN-EP

| PIN | | | | NAME | FUNCTION |
|---------|---------|---------|---------------------|------------|--|
| MAX4747 | MAX4748 | MAX4749 | MAX4750 | | |
| 1, 3 | 1, 3 | 1, 3 | 1, 9 | COM1, COM2 | Analog-Switch Common Terminals |
| 2 | — | — | 7 | NO2 | Analog-Switch Normally Open Terminal |
| 4, 13 | 4, 13 | 4, 13 | 5, 13 | IN2, IN1 | Logic-Control Digital Inputs |
| 5, 12 | 5, 12 | 5, 12 | — | IN3, IN4 | Logic-Control Digital Inputs |
| 6 | 6 | 6 | 6 | GND | Ground. Connect to digital ground. |
| 7 | — | 7 | — | NO3 | Analog-Switch Normally Open Terminal |
| 8, 14 | 8, 14 | 8, 14 | 2, 4, 8, 10, 12, 14 | N.C. | No Connection. Not internally connected. |
| 9, 10 | 9, 10 | 9, 10 | — | COM3, COM4 | Analog-Switch Common Terminals |
| 11 | — | — | — | NO4 | Analog-Switch Normally Open Terminal |
| 15 | 15 | 15 | 15 | V+ | Positive Supply-Voltage Input |
| 16 | — | 16 | 16 | NO1 | Analog-Switch Normally Open Terminal |
| — | 2 | 2 | 11 | NC2 | Analog-Switch Normally Closed Terminal |
| — | 7 | — | — | NC3 | Analog-Switch Normally Closed Terminal |
| — | 11 | 11 | — | NC4 | Analog-Switch Normally Closed Terminal |
| — | 16 | — | 3 | NC1 | Analog-Switch Normally Closed Terminal |
| — | — | — | — | EP | Exposed Pad. Connect EP to V+. |

50Ω, Low-Voltage, Quad SPST/Dual SPDT Analog Switches in WLP

MAX4747-MAX4750

Applications Information

Operating Considerations for High-Voltage Supply

The MAX4747–MAX4750 operate to +11V with some precautions. The absolute maximum rating for V+ is +12V (referenced to GND). When operating near this region, bypass V+ with a minimum 0.1μF capacitor to ground as close to the IC as possible.

Logic Levels

The MAX4747–MAX4750 are TTL compatible when powered from a single +3V supply. When powered from other supply voltages, the logic inputs should be driven rail-to-rail. For example, with a +11V supply, IN₋ should be driven low to 0V and high to 11V. With a +3.3V supply, IN₋ should be driven low to 0V and high to 3.3V. Driving IN₋ rail-to-rail minimizes power consumption.

Analog Signal Levels

Analog signals that range over the entire supply voltage (GND to V+) pass with very little change in R_{ON} (see the *Typical Operating Characteristics*). The bidirectional switches allow NO₋, NC₋, and COM₋ connections to be used as either inputs or outputs.

Power-Supply Sequencing and Overvoltage Protection

CAUTION: Do not exceed the absolute maximum ratings. Stresses beyond the listed ratings can cause permanent damage to the devices.

Proper power-supply sequencing is recommended for all CMOS devices. Always apply V+ before applying analog signals, especially if the analog signal is not current limited. If this sequencing is not possible, and if the analog inputs are not current limited to < 20mA, add small-signal diode D1 as shown in Figure 1. If the analog signal can dip below GND, add D2. Adding protection diodes reduces the analog signal range to a diode drop (about 0.7V) below V+ (for D1), and to a diode drop above ground (for D2). Leakage is unaffected by adding the diodes. On-resistance increases slightly at low supply voltages. Maximum supply voltage (V+) must not exceed +11V.

Test Circuits/Timing Diagrams

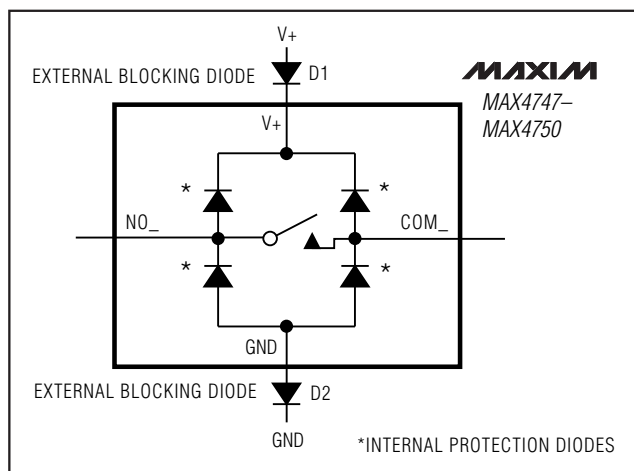


Figure 1. Overvoltage Protection Using External Blocking Diodes

Adding protection diodes causes the logic thresholds to be shifted relative to the power-supply rails. The most significant shift occurs when using low supply voltages (+5V or less). With a +5V supply, TTL compatibility is not guaranteed when protection diodes are added. Driving IN₋ and IN₋ all the way to the supply rails (i.e., to a diode drop higher than the V+ pin, or to a diode drop lower than the GND pin) is always acceptable.

Protection diodes D1 and D2 also protect against some overvoltage situations. Using the circuit in Figure 1, no damage results if the supply voltage is below the absolute maximum rating (+12V) and if a fault voltage up to the absolute maximum rating (V+ + 0.3V) is applied to an analog signal terminal.

WLP Applications Information

For the latest application details on WLP construction, dimensions, tape carrier information, PC board techniques, bump-pad layout, and recommended reflow temperature profile, as well as the latest information on reliability testing results, refer to the Application Note 1891: *Wafer-Level Packaging (WLP) and its Applications* on Maxim's web site at www.maxim-ic.com/wlp.

50Ω, Low-Voltage, Quad SPST/Dual SPDT Analog Switches in WLP

Test Circuits/Timing Diagrams (continued)

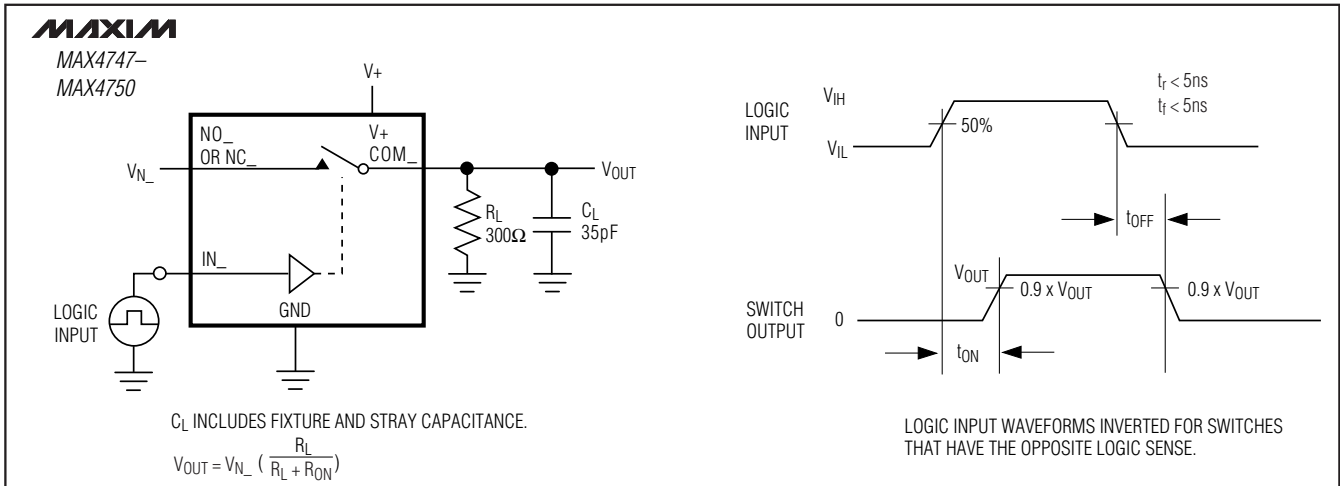


Figure 2. Switching Time

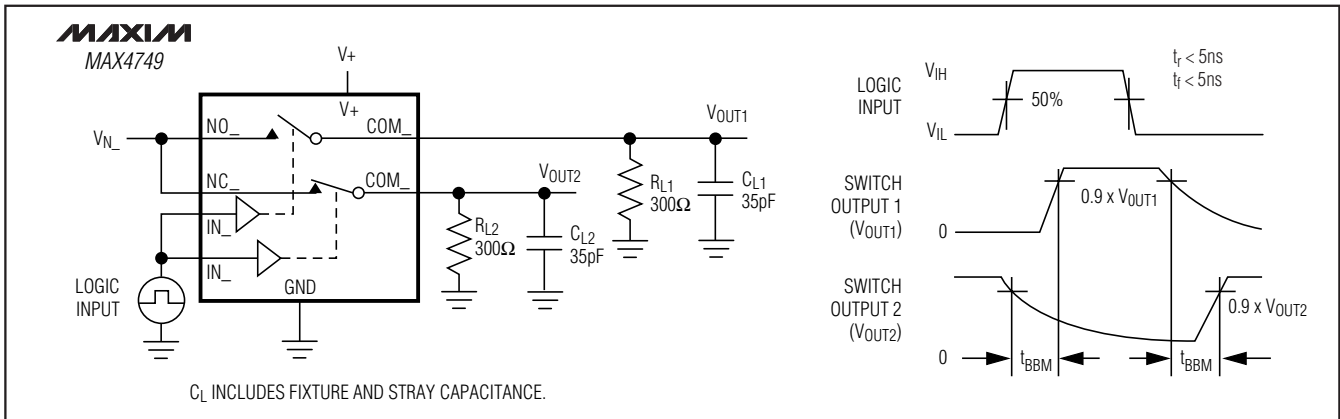


Figure 3. Break-Before-Make Interval

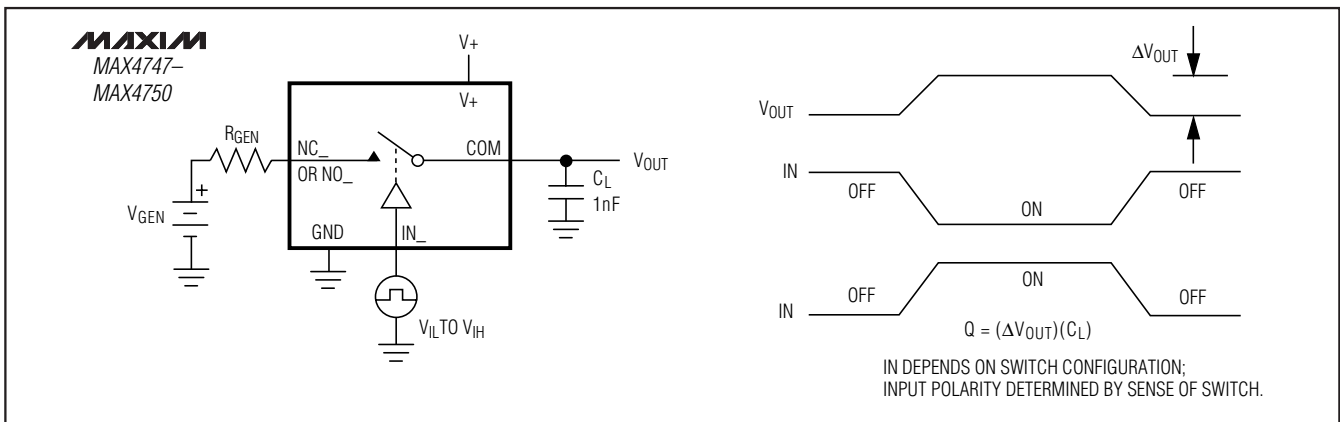


Figure 4. Charge Injection

50Ω, Low-Voltage, Quad SPST/Dual SPDT Analog Switches in WLP

MAX4747-MAX4750

Test Circuits/Timing Diagrams (continued)

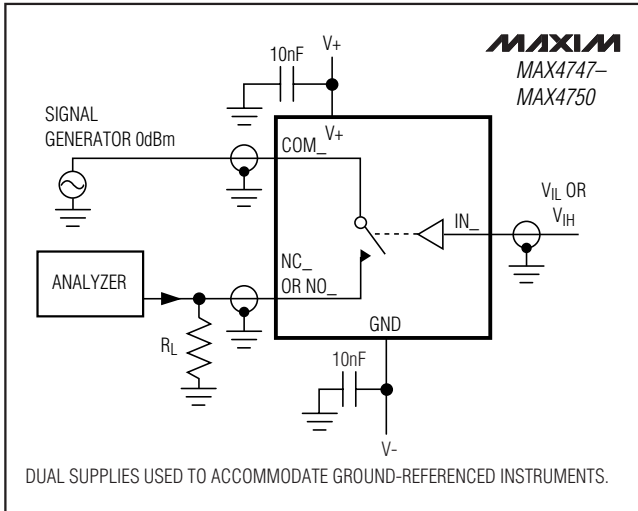


Figure 5. Off-Isolation/On-Channel Bandwidth

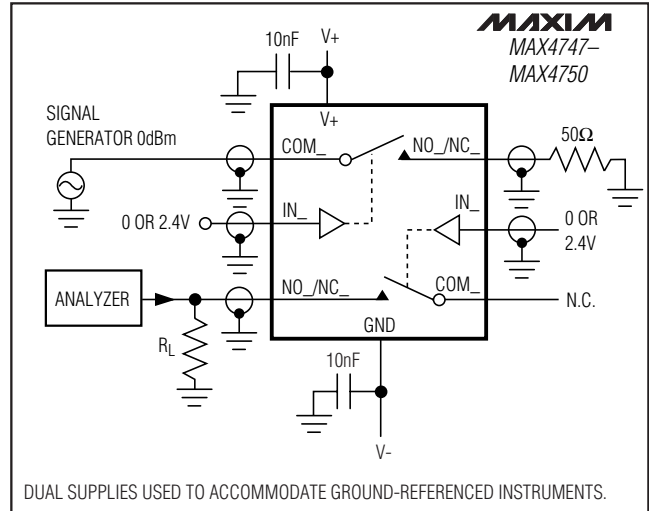


Figure 6. Crosstalk

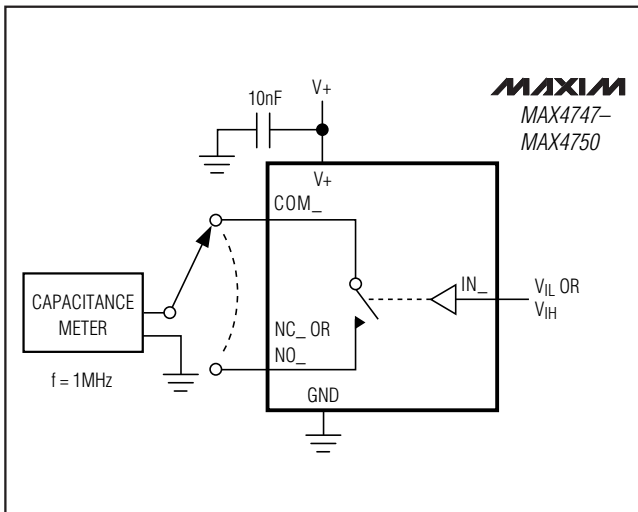


Figure 7. Channel Off-/On-Capacitance

Ordering Information (continued)

| PART | TEMP RANGE | PIN-/BUMP-PACKAGE |
|----------------|----------------|-------------------|
| MAX4748EUD+ | -40°C to +85°C | 14 TSSOP |
| MAX4748ETE+ | -40°C to +85°C | 16 Thin QFN-EP* |
| MAX4748EWE+T | -40°C to +85°C | 16 WLP |
| MAX4749EUD+ | -40°C to +85°C | 14 TSSOP |
| MAX4749ETE+ | -40°C to +85°C | 16 Thin QFN-EP* |
| MAX4749EWE+T** | -40°C to +85°C | 16 WLP |
| MAX4750EUD+ | -40°C to +85°C | 14 TSSOP |
| MAX4750ETE+ | -40°C to +85°C | 16 Thin QFN-EP* |
| MAX4750EWE+T** | -40°C to +85°C | 16 WLP |

*EP = Exposed pad.

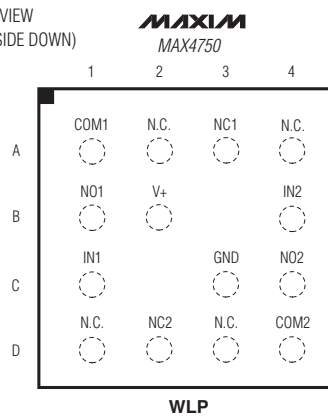
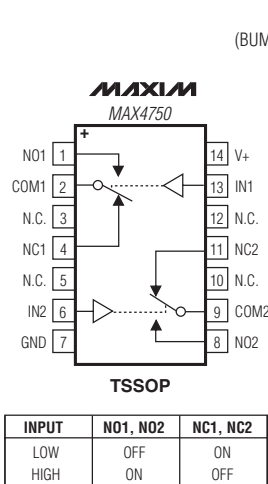
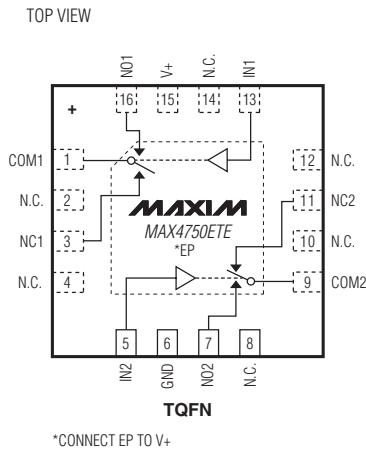
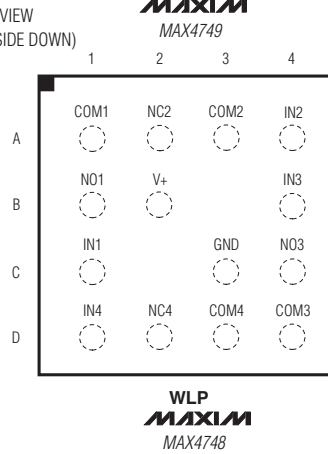
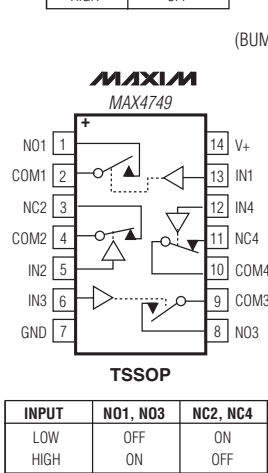
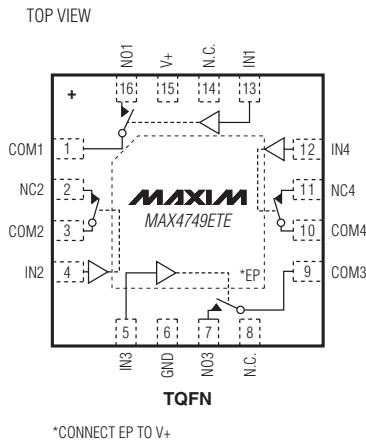
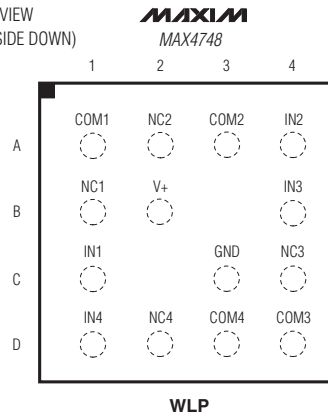
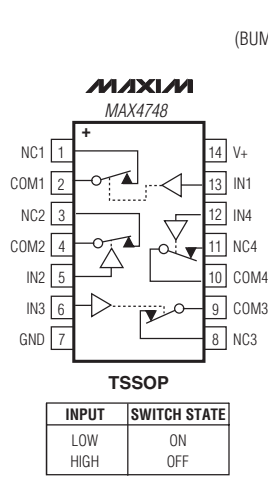
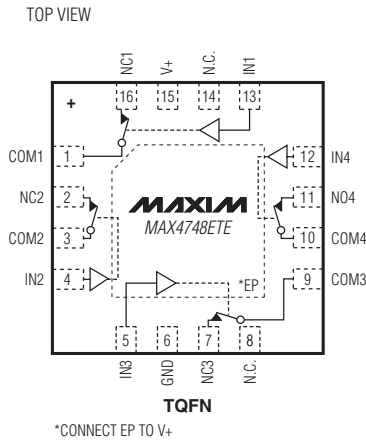
+Denotes a lead(Pb)-free/RoHS-compliant package.

**Future products. Contact factory for availability.

T = Tape and reel.

50Ω, Low-Voltage, Quad SPST/Dual SPDT Analog Switches in WLP

Pin/Bump Configurations/Truth Tables (continued)



50Ω, Low-Voltage, Quad SPST/Dual SPDT Analog Switches in WLP

Chip Information

PROCESS: CMOS

Package Information

For the latest package outline information and land patterns (footprints), go to www.maxim-ic.com/packages. Note that a “+”, “#”, or “-” in the package code indicates RoHS status only. Package drawings may show a different suffix character, but the drawing pertains to the package regardless of RoHS status.

| PACKAGE TYPE | PACKAGE CODE | OUTLINE NO. | LAND PATTERN NO. |
|--------------|--------------|-------------------------|--|
| 14 TSSOP | U14+1 | 21-0066 | 90-0113 |
| 16 TQFN | T1644+4 | 21-0139 | 90-0070 |
| 16 WLP | W162D2+1 | 21-0200 | Refer to Application Note 1891 |

MAX4747-MAX4750

50Ω, Low-Voltage, Quad SPST/Dual SPDT Analog Switches in WLP



Revision History

| REVISION NUMBER | REVISION DATE | DESCRIPTION | PAGES CHANGED |
|------------------------|----------------------|---|----------------------|
| 2 | 12/06 | Various changes | 1-15 |
| 3 | 1/12 | Updated UCSP to WLP packaging, corrected pin configuration, added lead-free packaging | 1-9, 11-13 |

Maxim cannot assume responsibility for use of any circuitry other than circuitry entirely embodied in a Maxim product. No circuit patent licenses are implied. Maxim reserves the right to change the circuitry and specifications without notice at any time. The parametric values (min and max limits) shown in the Electrical Characteristics table are guaranteed. Other parametric values quoted in this data sheet are provided for guidance.

Looking for pricing, stock, or lifecycle information?

Click below to explore more details on WIN SOURCE:

-  [View MAX4750EBE+T on WIN SOURCE](#)
-  [Maxim Integrated Information](#)

Optimize Your Supply Chain with WIN SOURCE Solutions

-  Global Sourcing Solution
-  Obsolete Management
-  Cost Control Management
-  Shortage Management
-  Alternative Solution
-  Excess Inventory Management