

2SJ0674

Silicon P-channel MOS FET

For switching circuits

■ Features

- Low ON resistance R_{on}
- High-speed switching
- SSSMini type package, allowing downsizing of the equipment and automatic insertion through the tape packing

■ Package

- Code
SSSMini3-F1
- Pin Name
1: Gate
2: Source
3: Drain

■ Absolute Maximum Ratings $T_a = 25^\circ\text{C}$

Parameter	Symbol	Rating	Unit
Drain-source surrender voltage	V_{DSS}	-30	V
Gate-source surrender voltage	V_{GSS}	± 12	V
Drain current	I_D	-100	mA
Peak drain current	I_{DP}	-200	mA
Power dissipation	P_D	100	mW
Channel temperature	T_{ch}	125	$^\circ\text{C}$
Storage temperature	T_{stg}	-55 to +125	$^\circ\text{C}$

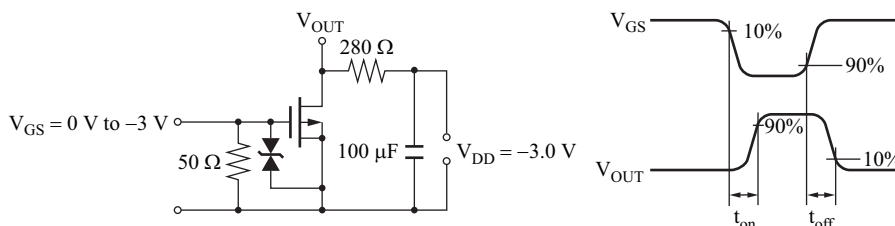
■ Marking Symbol: 5U

■ Electrical Characteristics $T_a = 25^\circ\text{C} \pm 3^\circ\text{C}$

Parameter	Symbol	Conditions	Min	Typ	Max	Unit
Drain-source surrender voltage	V_{DSS}	$I_D = -10 \mu\text{A}, V_{GS} = 0$	-30			V
Drain-source cutoff current	I_{DSS}	$V_{DS} = -20 \text{ V}, V_{GS} = 0$			-1.0	μA
Gate-source cutoff current	I_{GSS}	$V_{GS} = \pm 10 \text{ V}, V_{DS} = 0$			± 10	μA
Gate threshold voltage	V_{TH}	$I_D = -1.0 \text{ mA}, V_{DS} = -3.0 \text{ V}$	-0.5	-1.0	-1.5	V
Drain-source ON resistance	$R_{DS(on)}$	$I_D = -10 \text{ mA}, V_{GS} = -2.5 \text{ V}$		13	30	Ω
		$I_D = -10 \text{ mA}, V_{GS} = -4.0 \text{ V}$		9	18	
Forward transfer admittance	$ Y_{fs} $	$I_D = -10 \text{ mA}, V_{DS} = -3 \text{ V}, f = 1 \text{ kHz}$	20	40		mS
Short-circuit input capacitance (Common source)	C_{iss}	$V_{DS} = -3 \text{ V}, V_{GS} = 0, f = 1 \text{ MHz}$		12		pF
Short-circuit output capacitance (Common source)	C_{oss}				13	pF
Reverse transfer capacitance (Common source)	C_{rss}			7		pF
Turn-on time *	t_{on}	$V_{DD} = -3 \text{ V}, V_{GS} = 0 \text{ V to } -3 \text{ V}, I_D = -10 \text{ mA}$		300		ns
Turn-off time *	t_{off}	$V_{DD} = -3 \text{ V}, V_{GS} = -3 \text{ V to } 0 \text{ V}, I_D = -10 \text{ mA}$		400		ns

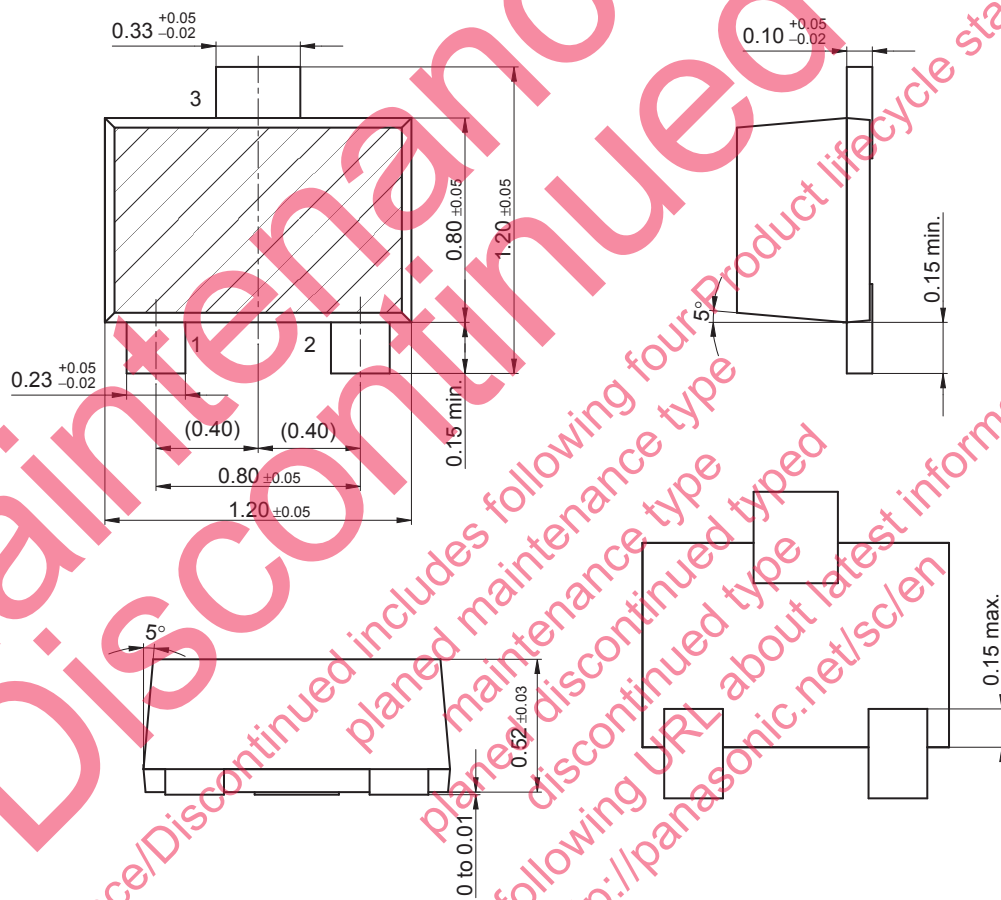
Note) 1. Measuring methods are based on JAPANESE INDUSTRIAL STANDARD JIS C 7030 measuring methods for transistors.

2. *: t_{on}, t_{off} measurement circuit



SSSMini3-F1

Unit: mm



Maintenance/Discontinued includes following four Product lifecycle stage.
planned maintenance type
planned maintenance type
discontinued type
discontinued type
Please visit following URL about latest information.
<http://panasonic.net/sc/en>

Looking for pricing, stock, or lifecycle information?

Click below to explore more details on WIN SOURCE:

 [View 2SJ067400L on WIN SOURCE](#)

 [Panasonic Information](#)

Optimize Your Supply Chain with WIN SOURCE Solutions

-  Global Sourcing Solution
-  Obsolete Management
-  Cost Control Management
-  Shortage Management
-  Alternative Solution
-  Excess Inventory Management