



ON Semiconductor®

www.onsemi.com

CPH3355

Power MOSFET –30V, 156mΩ, –2.5A, Single P-Channel

Features

- On-resistance $R_{DS(on)1}=120m\Omega$ (typ)
- 4V drive
- Halogen free compliance

Specifications

Absolute Maximum Ratings at $T_a = 25^\circ C$

Parameter	Symbol	Value	Unit
Drain to Source Voltage	V_{DSS}	–30	V
Gate to Source Voltage	V_{GSS}	± 20	V
Drain Current (DC)	I_D	–2.5	A
Drain Current (Pulse) $PW \leq 10\mu s$, duty cycle $\leq 1\%$	I_{DP}	–10	A
Power Dissipation When mounted on ceramic substrate ($900mm^2 \times 0.8mm$)	P_D	1.0	W
Junction Temperature	T_J	150	$^\circ C$
Storage Temperature	T_{stg}	–55 to +150	$^\circ C$

This product is designed to "ESD immunity < 200V*", so please take care when handling.

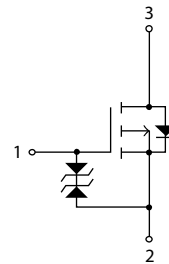
* Machine Model

Thermal Resistance Ratings

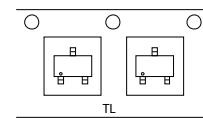
Parameter	Symbol	Value	Unit
Junction to Ambient When mounted on ceramic substrate ($900mm^2 \times 0.8mm$)	$R_{\theta JA}$	125	$^\circ C/W$

Stresses exceeding those listed in the Maximum Ratings table may damage the device. If any of these limits are exceeded, device functionality should not be assumed, damage may occur and reliability may be affected.

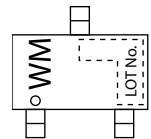
Electrical Connection P-Channel



Packing Type: TL



Marking



ORDERING INFORMATION

See detailed ordering and shipping information on page 5 of this data sheet.

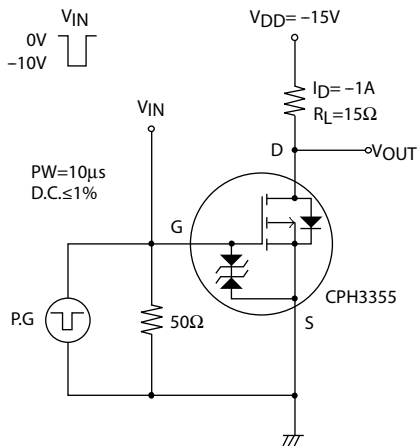
CPH3355

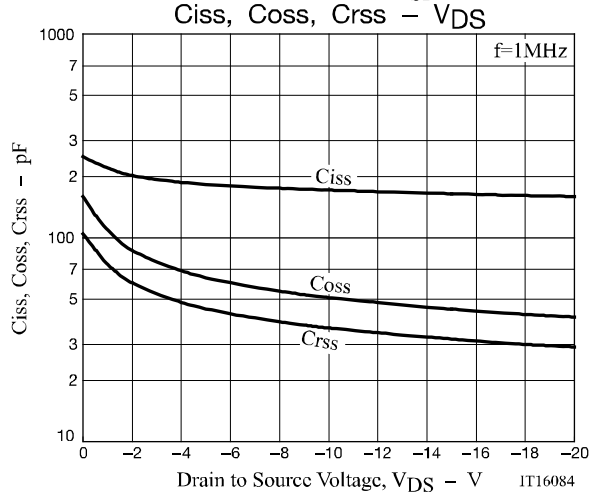
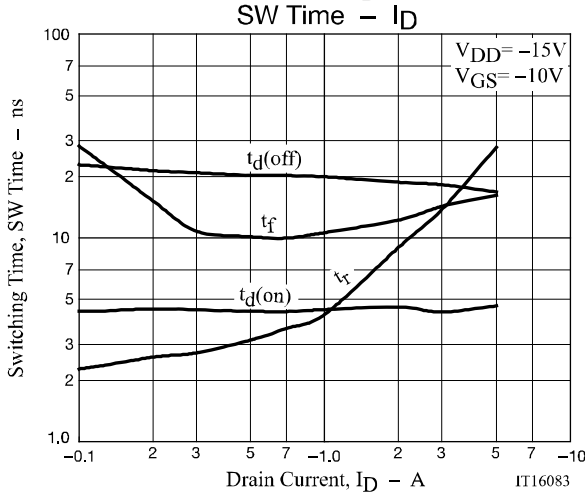
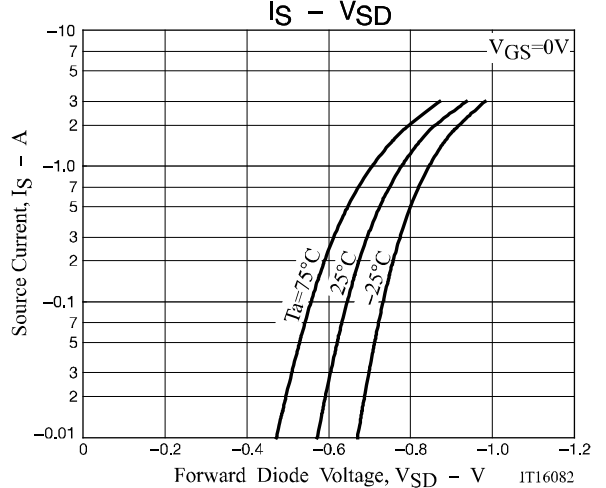
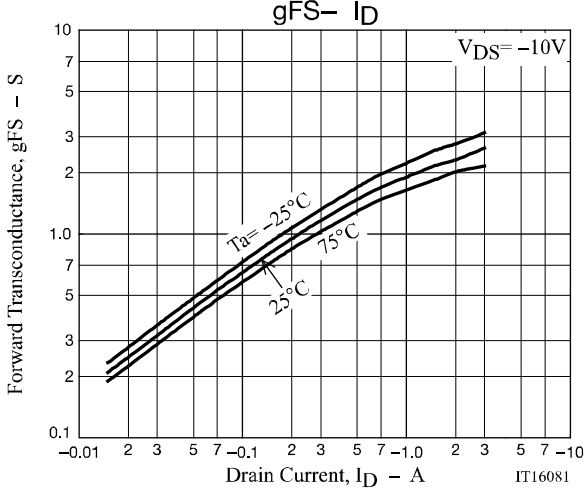
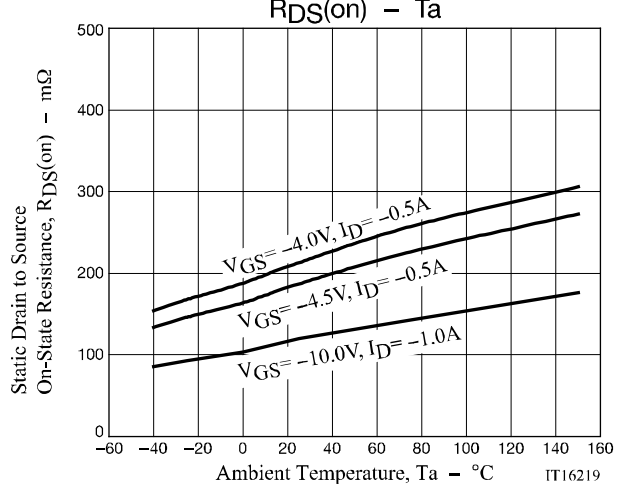
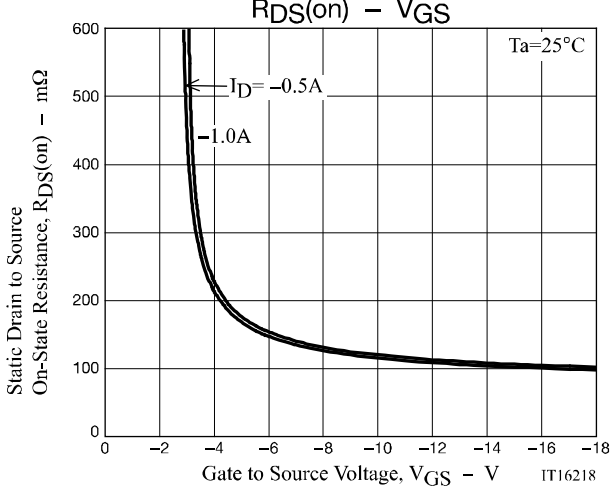
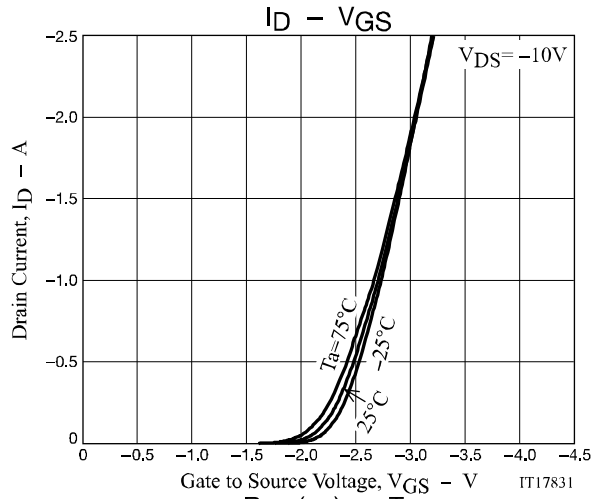
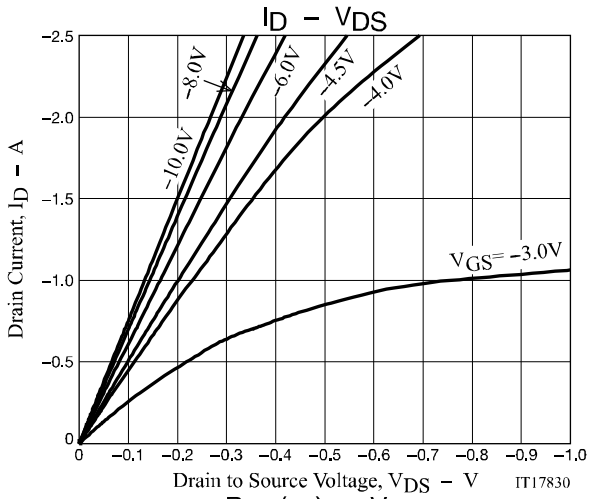
Electrical Characteristics at Ta = 25°C

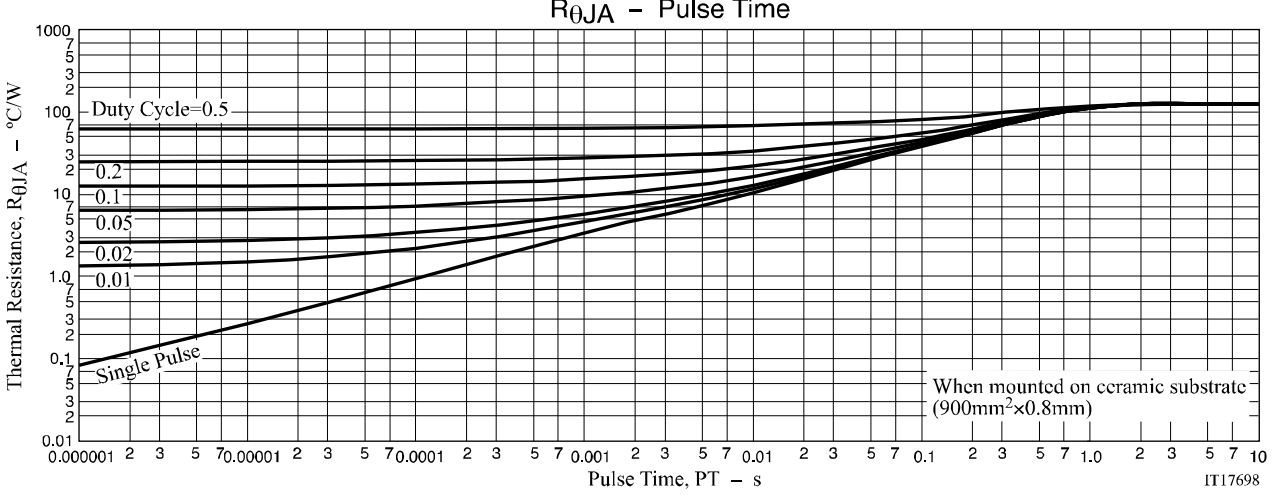
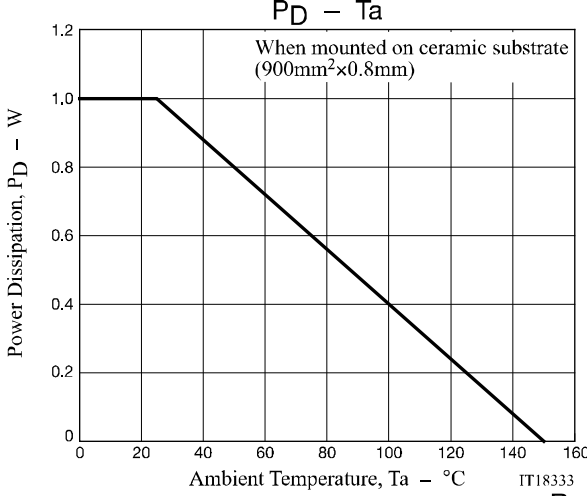
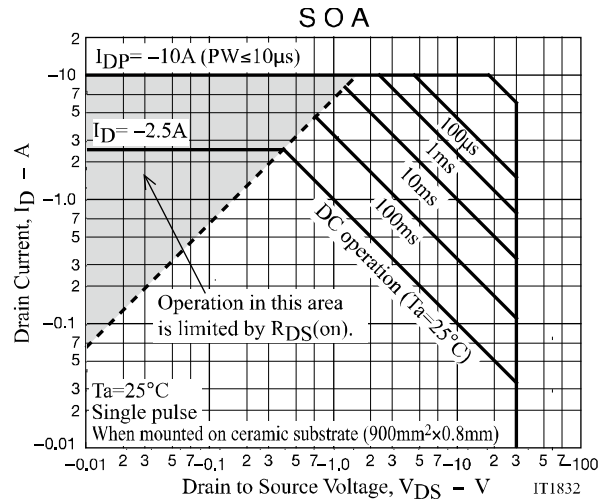
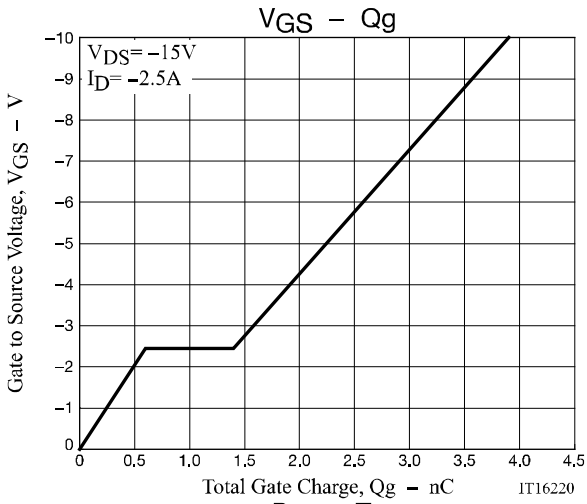
Parameter	Symbol	Conditions	Value			Unit
			min	typ	max	
Drain to Source Breakdown Voltage	$V_{(BR)DSS}$	$I_D = -1\text{mA}$, $V_{GS} = 0\text{V}$	-30			V
Zero-Gate Voltage Drain Current	I_{DSS}	$V_{DS} = -30\text{V}$, $V_{GS} = 0\text{V}$			-1	μA
Gate to Source Leakage Current	I_{GSS}	$V_{GS} = \pm 16\text{V}$, $V_{DS} = 0\text{V}$			± 10	μA
Gate Threshold Voltage	$V_{GS(th)}$	$V_{DS} = -10\text{V}$, $I_D = -1\text{mA}$	-1.2		-2.6	V
Forward Transconductance	g_{FS}	$V_{DS} = -10\text{V}$, $I_D = -1\text{A}$		1.9		S
Static Drain to Source On-State Resistance	$R_{DS(on)1}$	$I_D = -1\text{A}$, $V_{GS} = -10\text{V}$		120	156	$\text{m}\Omega$
	$R_{DS(on)2}$	$I_D = -0.5\text{A}$, $V_{GS} = -4.5\text{V}$		187	262	$\text{m}\Omega$
	$R_{DS(on)3}$	$I_D = -0.5\text{A}$, $V_{GS} = -4\text{V}$		213	299	$\text{m}\Omega$
Input Capacitance	C_{iss}	$V_{DS} = -10\text{V}$, $f = 1\text{MHz}$		172		pF
Output Capacitance	C_{oss}			51		pF
Reverse Transfer Capacitance	C_{rss}			36		pF
Turn-ON Delay Time	$t_{d(on)}$			4.5		ns
Rise Time	t_r	See specified Test Circuit		4.2		ns
Turn-OFF Delay Time	$t_{d(off)}$			20		ns
Fall Time	t_f			10.6		ns
Total Gate Charge	Q_g	$V_{DS} = -15\text{V}$, $V_{GS} = -10\text{V}$, $I_D = -2.5\text{A}$		3.9		nC
Gate to Source Charge	Q_{gs}			0.6		nC
Gate to Drain "Miller" Charge	Q_{gd}			0.8		nC
Forward Diode Voltage	V_{SD}		$I_S = -2.5\text{A}$, $V_{GS} = 0\text{V}$		-0.86	-1.5

Product parametric performance is indicated in the Electrical Characteristics for the listed test conditions, unless otherwise noted. Product performance may not be indicated by the Electrical Characteristics if operated under different conditions.

Switching Time Test Circuit







CPH3355

Package Dimensions

CPH3355-TL-H/ CPH3355-TL-W

CPH3

CASE 318BA

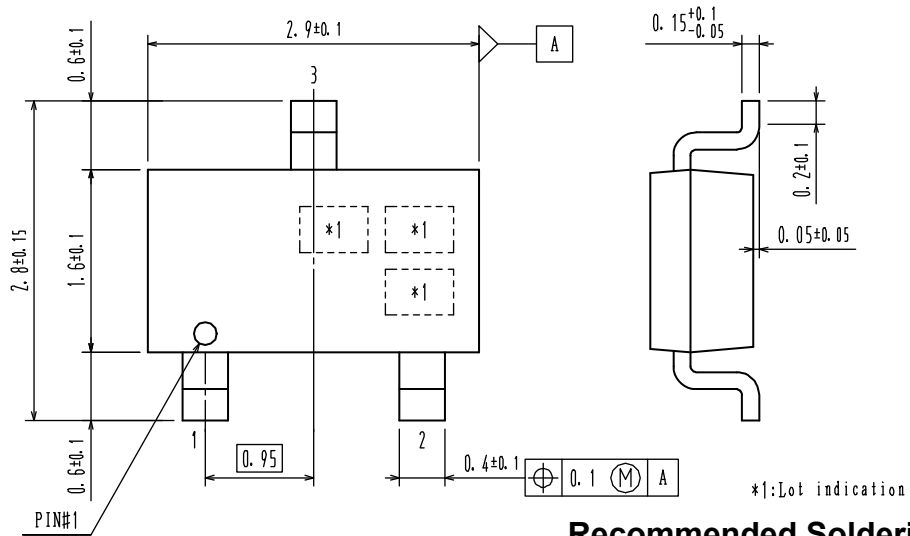
ISSUE O

Unit : mm

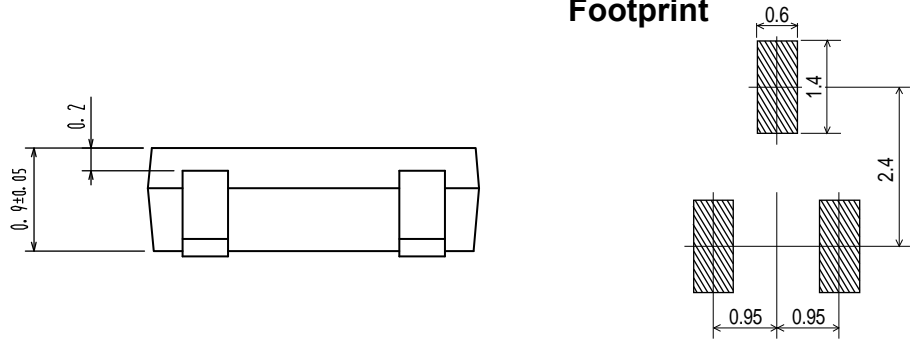
1 : Gate

2 : Source

3 : Drain



Recommended Soldering Footprint



ORDERING INFORMATION

Device	Package	Shipping	Note
CPH3355-TL-H	CPH3, SC-59	3,000 pcs. / reel	Pb-Free and Halogen Free
CPH3355-TL-W	SOT-23, TO-236		

Note on usage : Since the CPH3355 is a MOSFET product, please avoid using this device in the vicinity of highly charged objects.

ON Semiconductor and the ON logo are registered trademarks of Semiconductor Components Industries, LLC (SCILLC) or its subsidiaries in the United States and/or other countries. SCILLC owns the rights to a number of patents, trademarks, copyrights, trade secrets, and other intellectual property. A listing of SCILLC's product/patent coverage may be accessed at www.onsemi.com/site/pdf/Patent-Marking.pdf. SCILLC reserves the right to make changes without further notice to any products herein. SCILLC makes no warranty, representation or guarantee regarding the suitability of its products for any particular purpose, nor does SCILLC assume any liability arising out of the application or use of any product or circuit, and specifically disclaims any and all liability, including without limitation special, consequential or incidental damages. "Typical" parameters which may be provided in SCILLC data sheets and/or specifications can and do vary in different applications and actual performance may vary over time. All operating parameters, including "Typicals" must be validated for each customer application by customer's technical experts. SCILLC does not convey any license under its patent rights nor the rights of others. SCILLC products are not designed, intended, or authorized for use as components in systems intended for surgical implant into the body, or other applications intended to support or sustain life, or for any other application in which the failure of the SCILLC product could create a situation where personal injury or death may occur. Should Buyer purchase or use SCILLC products for any such unintended or unauthorized application, Buyer shall indemnify and hold SCILLC and its officers, employees, subsidiaries, affiliates, and distributors harmless against all claims, costs, damages, and expenses, and reasonable attorney fees arising out of, directly or indirectly, any claim of personal injury or death associated with such unintended or unauthorized use, even if such claim alleges that SCILLC was negligent regarding the design or manufacture of the part. SCILLC is an Equal Opportunity/Affirmative Action Employer. This literature is subject to all applicable copyright laws and is not for resale in any manner.

Looking for pricing, stock, or lifecycle information?

Click below to explore more details on WIN SOURCE:

- ⊖ [View CPH3355-TL-W on WIN SOURCE](#)
- ⊖ [ON Semiconductor](#) Information

Optimize Your Supply Chain with WIN SOURCE Solutions

- ✓ Global Sourcing Solution
- ✓ Obsolete Management
- ✓ Cost Control Management
- ✓ Shortage Management
- ✓ Alternative Solution
- ✓ Excess Inventory Management