



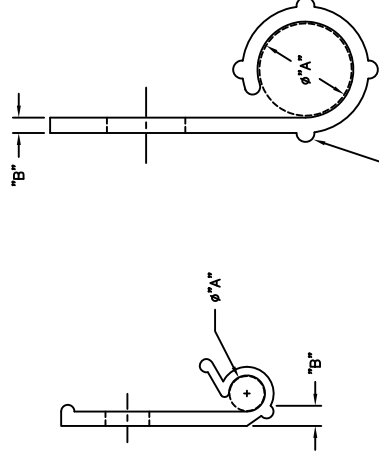
**THE DATASHEET OF
WHC-125-01**



NYLON 6/6 (RMS-01) COLOR: NATURAL PART NO.	"A" REF HOLDING DIAMETER	"B"	"C"
WHC-125-01	1/8 (3.2)	.05 (1.3)	.33 (8.4)
WHC-250-01	1/4 (6.4)	.04 (1.0)	.2
WHC-375-01	3/8 (9.5)	.05 (1.3)	.40 (10.2)
WHC-500-01	1/2 (12.7)	.07 (1.8)	.2
WHC-625-01	5/8 (15.9)	.08 (2.0)	
WHC-750-01	3/4 (19.1)	.09 (2.2)	.50 (12.7)
WHC-1000-01	1 (25.4)	.09 (2.2)	.1
WHC-1500-01	1-1/2 (38.1)	.10 (2.5)	

WHC-250-01
TO 1500-01

WHC-125-01



NOTES:

1. MATERIAL: FLAME RETARDANT (RMS-19), COLOR NATURAL, AVAILABLE BY SPECIAL ORDER. TO ORDER, REPLACE "-01" WITH "-19".
2. MATERIAL: UV STABILIZED NYLON (RMS-46), COLOR BLACK, AVAILABLE BY SPECIAL ORDER. TO ORDER, REPLACE "-01" WITH "-UVB"

TITLE: WIRE HARNESS CLIP

H	SEE CO 200664 FOR CHANGES	SK 04.27.11	FILE # WHC	DWN: P.B.	APP:
G	SEE CO 200091 FOR CHANGES	SK 12.18.07	MAT'L: SEE TABLE	DT: 05-02-94	DT:
F	SEE ECN #1358 FOR CHANGES	SK 08.24.07	RE: RICHCO, INC.	RICHCO INC. PO BOX 804238, CHICAGO, 60688 (773) 539-4060	
-	SEE ENGINEERING FOR REV A-E	-----	TOLERANCES UNLESS NOTED .XX=±.010 .XXX=±.005 FRAC=1/64 ANG=1°		
REV	DESCRIPTION	ENGR	DATE		

Looking for pricing, stock, or lifecycle information?

Click below to explore more details on WIN SOURCE:

- ⊖ [View WHC-125-01](#) on WIN SOURCE
- ⊖ [Essentra Components](#) Information

Optimize Your Supply Chain with WIN SOURCE Solutions

- ✓ Global Sourcing Solution
- ✓ Obsolete Management
- ✓ Cost Control Management
- ✓ Shortage Management
- ✓ Alternative Solution
- ✓ Excess Inventory Management