



**THE DATASHEET OF  
NCV562SQ33T1G**



# NCP562, NCV562, NCP563, NCV563

## 80 mA CMOS Low Iq Low-Dropout Voltage Regulator

This series of fixed output low-dropout linear regulators are designed for handheld communication equipment and portable battery powered applications which require low quiescent. This series features an ultra-low quiescent current of 2.5  $\mu$ A. Each device contains a voltage reference unit, an error amplifier, a PMOS power transistor, resistors for setting output voltage, current limit, and temperature limit protection circuits. The NCP562 series provides an enable pin for ON/OFF control.

The NCP562/NCP563 has been designed to be used with low cost ceramic capacitors and requires a minimum output capacitor of 0.1  $\mu$ F. The device is housed in the micro-miniature SC82-AB surface mount package. Standard voltage versions are 1.5, 1.8, 2.1, 2.5, 2.7, 2.8, 3.0, 3.3, 3.5 and 5.0 V. Other voltages are available in 100 mV steps.

### Features

- Low Quiescent Current of 2.5  $\mu$ A Typical
- Low Output Voltage Option
- Output Voltage Accuracy of 2.0%
- Temperature Range of  $-40^{\circ}\text{C}$  to  $85^{\circ}\text{C}$
- NCP562 Provides an Enable Pin
- NCV Prefix for Automotive and Other Applications Requiring Unique Site and Control Change Requirements; AEC-Q100 Qualified and PPAP Capable
- These Devices are Pb-Free, Halogen Free/BFR Free and are RoHS Compliant

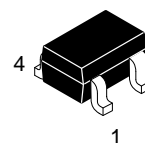
### Typical Applications

- Battery Powered Instruments
- Hand-Held Instruments
- Camcorders and Cameras



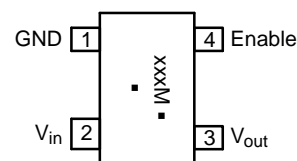
ON Semiconductor®

[www.onsemi.com](http://www.onsemi.com)

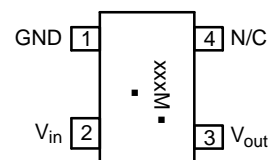


SC82-AB (SC70-4)  
SQ SUFFIX  
CASE 419C

### PIN CONNECTIONS & MARKING DIAGRAMS



(NCP562 Top View)



(NCP563 Top View)

xxx = Specific Device Code  
M = Month Code\*  
▪ = Pb-Free Package

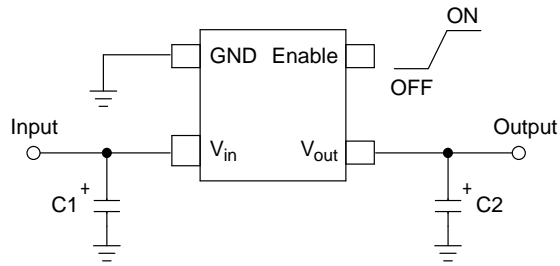
(Note: Microdot may be in either location)

\*Date Code orientation and/or position and underbar may vary depending upon manufacturing location.

### ORDERING INFORMATION

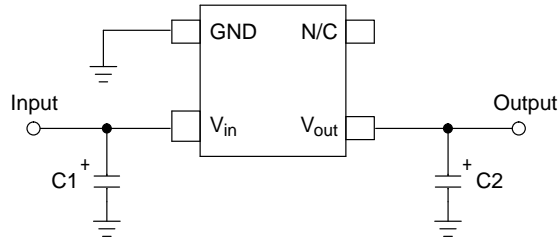
See detailed ordering and shipping information in the package dimensions section on page 7 of this data sheet.

# NCP562, NCV562, NCP563, NCV563



This device contains 28 active transistors

**Figure 1. NCP562 Typical Application Diagram**



This device contains 28 active transistors

**Figure 2. NCP563 Typical Application Diagram**

## PIN FUNCTION DESCRIPTION

| NCP562 | NCP563 | Pin Name         | Description   |
|--------|--------|------------------|---|
| 1      | 1      | GND              | Power supply ground.  |
| 2      | 2      | V <sub>in</sub>  | Positive power supply input voltage.  |
| 3      | 3      | V <sub>out</sub> | Regulated output voltage.   |
| 4      | –      | Enable           | This input is used to place the device into low-power standby. When this input is pulled low, the device is disabled. If this function is not used, Enable should be connected to V <sub>in</sub> . |
| –      | 4      | N/C              | No internal connection.   |

## MAXIMUM RATINGS

| Rating  | Symbol                             | Value                        | Unit      |
|---|------------------------------------|------------------------------|-----------|
| Input Voltage   | V <sub>in</sub>                    | 6.0                          | V         |
| Enable Voltage (NCP562 ONLY)  | Enable                             | –0.3 to V <sub>in</sub> +0.3 | V         |
| Output Voltage  | V <sub>out</sub>                   | –0.3 to V <sub>in</sub> +0.3 | V         |
| Power Dissipation and Thermal Characteristics<br>Power Dissipation<br>Thermal Resistance, Junction-to-Ambient | P <sub>D</sub><br>R <sub>θJA</sub> | Internally Limited<br>400    | W<br>°C/W |
| Operating Junction Temperature  | T <sub>J</sub>                     | +150                         | °C        |
| Operating Ambient Temperature   | T <sub>A</sub>                     | –40 to +85                   | °C        |
| Storage Temperature   | T <sub>stg</sub>                   | –55 to +150                  | °C        |

Stresses exceeding those listed in the Maximum Ratings table may damage the device. If any of these limits are exceeded, device functionality should not be assumed, damage may occur and reliability may be affected.

- This device series contains ESD protection and exceeds the following tests:  
Human Body Model 2000 V per MIL-STD-883, Method 3015  
Machine Model Method 200 V
- Latch up capability (85°C) ±100 mA DC with trigger voltage.

# NCP562, NCV562, NCP563, NCV563

## ELECTRICAL CHARACTERISTICS

( $V_{in} = V_{out(nom.)} + 1.0\text{ V}$ ,  $V_{enable} = V_{in}$ ,  $C_{in} = 1.0\ \mu\text{F}$ ,  $C_{out} = 1.0\ \mu\text{F}$ ,  $T_J = 25^\circ\text{C}$ , unless otherwise noted.)

| Characteristic  | Symbol           | Min   | Typ  | Max   | Unit                  |
|---|------------------|---|--|---|-----------------------|
| Output Voltage ( $T_A = 25^\circ\text{C}$ , $I_{out} = 1.0\text{ mA}$ )<br>1.5 V<br>1.8 V<br>2.1 V<br>2.5 V<br>2.7 V<br>2.8 V<br>3.0 V<br>3.3 V<br>3.5 V<br>5.0 V   | $V_{out}$        | 1.455<br>1.746<br>2.037<br>2.425<br>2.646<br>2.744<br>2.940<br>3.234<br>3.43<br>4.9 | 1.5<br>1.8<br>2.1<br>2.5<br>2.7<br>2.8<br>3.0<br>3.3<br>3.5<br>5.0 | 1.545<br>1.854<br>2.163<br>2.575<br>2.754<br>2.856<br>3.060<br>3.366<br>3.57<br>5.1 | V                     |
| Line Regulation<br>1.5 V–4.4 V ( $V_{in} = V_{O(nom.)} + 1.0\text{ V}$ to 6.0 V)<br>4.5 V–5.0 V ( $V_{in} = 5.5\text{ V}$ to 6.0 V)   | $Reg_{line}$     | –<br>–  | 10<br>10   | 20<br>20  | mV                    |
| Load Regulation ( $I_{out} = 10\text{ mA}$ to 80 mA)  | $Reg_{load}$     | –   | 20   | 40  | mV                    |
| Output Current ( $V_{out} = (V_{out}$ at $I_{out} = 80\text{ mA}) - 3.0\%$ )<br>1.5 V to 3.9 V ( $V_{in} = V_{out(nom.)} + 2.0\text{ V}$ )<br>4.0 V–5.0 V ( $V_{in} = 6.0\text{ V}$ )   | $I_{O(nom.)}$    | 80<br>80  | 280<br>280   | –<br>–  | mA                    |
| Dropout Voltage ( $T_A = -40^\circ\text{C}$ to $85^\circ\text{C}$ , $I_{out} = 80\text{ mA}$ , Measured at $V_{out} - 3.0\%$ )<br>1.5 V–1.7 V<br>1.8 V–2.4 V<br>2.5 V–2.6 V<br>2.7 V–2.9 V<br>3.0 V–3.2 V<br>3.3 V–4.9 V<br>5.0 V | $V_{in}-V_{out}$ | –<br>–<br>–<br>–<br>–<br>–<br>–   | 550<br>400<br>250<br>230<br>200<br>190<br>140                      | 800<br>550<br>400<br>400<br>350<br>350<br>250                                       | mV                    |
| Quiescent Current<br>(Enable Input = 0 V)<br>(Enable Input = $V_{in}$ , $I_{out} = 1.0\text{ mA}$ to $I_{O(nom.)}$ )  | $I_Q$            | –<br>–  | 0.1<br>2.5   | 1.0<br>6.0  | $\mu\text{A}$         |
| Output Short Circuit Current<br>1.5 V to 3.9 V ( $V_{in} = V_{nom} + 2.0\text{ V}$ )<br>4.0 V–5.0 V ( $V_{in} = 6.0\text{ V}$ )   | $I_{out(max)}$   | 150<br>150  | 300<br>300   | 600<br>600  | mA                    |
| Output Voltage Noise ( $f = 100\text{ Hz}$ to $100\text{ kHz}$ , $V_{out} = 3.0\text{ V}$ )   | $V_n$            | –   | 100  | –   | $\mu\text{Vrms}$      |
| Enable Input Threshold Voltage (NCP562 ONLY)<br>(Voltage Increasing, Output Turns On, Logic High)<br>(Voltage Decreasing, Output Turns Off, Logic Low)  | $V_{th(en)}$     | 1.3<br>–  | –<br>–   | –<br>0.3  | V                     |
| Output Voltage Temperature Coefficient  | $T_C$            | –   | $\pm 100$  | –   | ppm/ $^\circ\text{C}$ |

3. Maximum package power dissipation limits must be observed.

$$P_D = \frac{T_{J(max)} - T_A}{R_{\theta JA}}$$

4. Low duty cycle pulse techniques are used during testing to maintain the junction temperature as close to ambient as possible.

# NCP562, NCV562, NCP563, NCV563

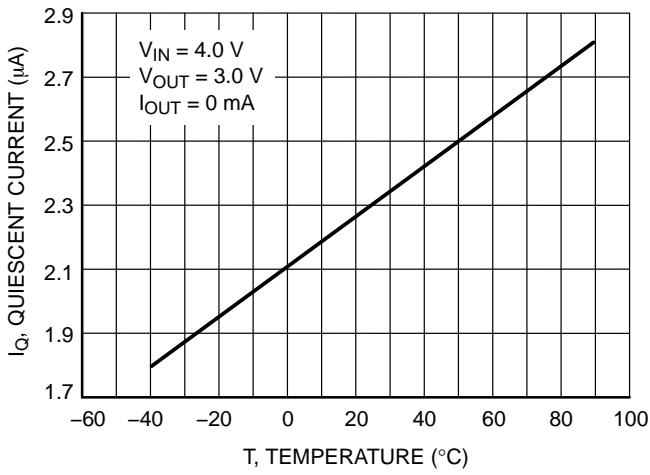


Figure 3. Quiescent Current versus Temperature

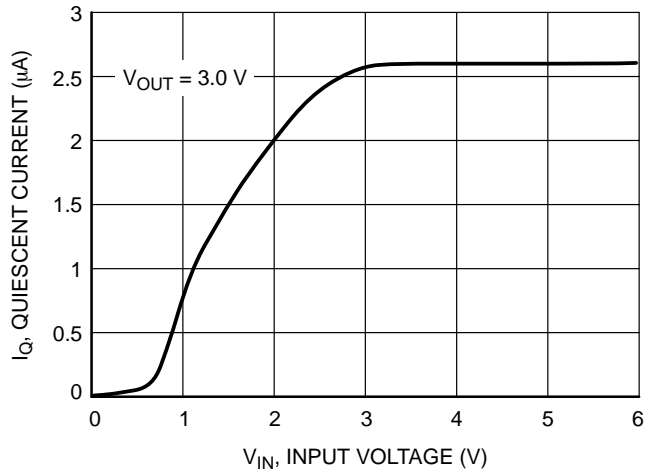


Figure 4. Quiescent Current versus Input Voltage

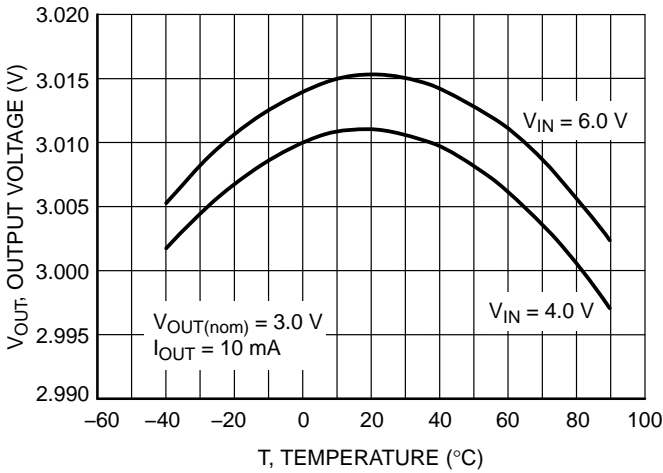


Figure 5. Output Voltage versus Temperature

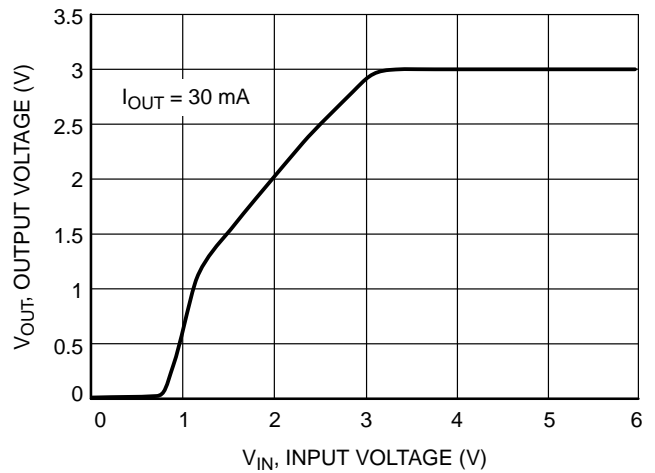


Figure 6. Output Voltage versus Input Voltage

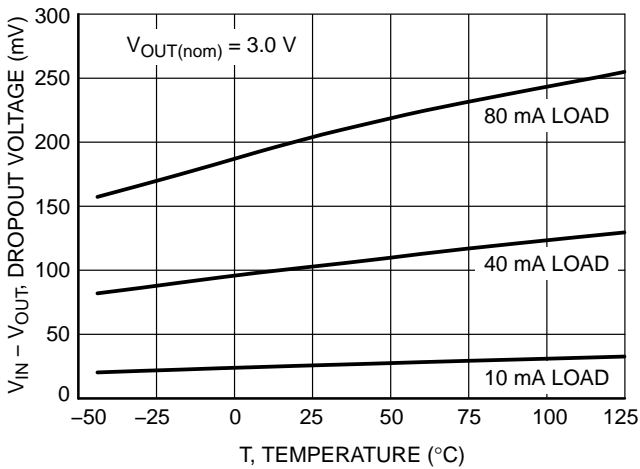


Figure 7. Dropout Voltage versus Temperature

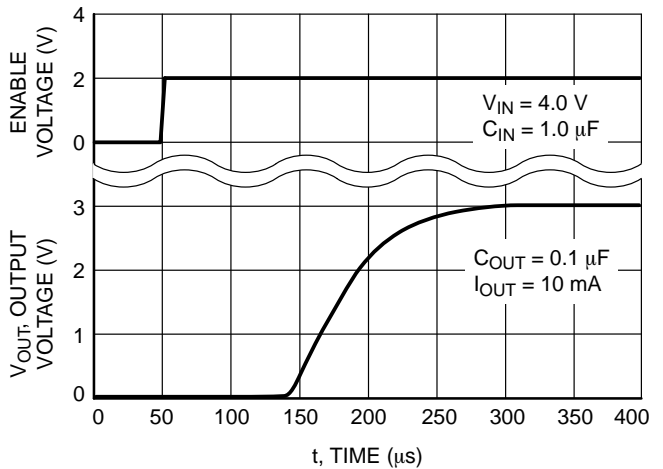


Figure 8. Turn-On Response (NCP562 ONLY)

# NCP562, NCV562, NCP563, NCV563

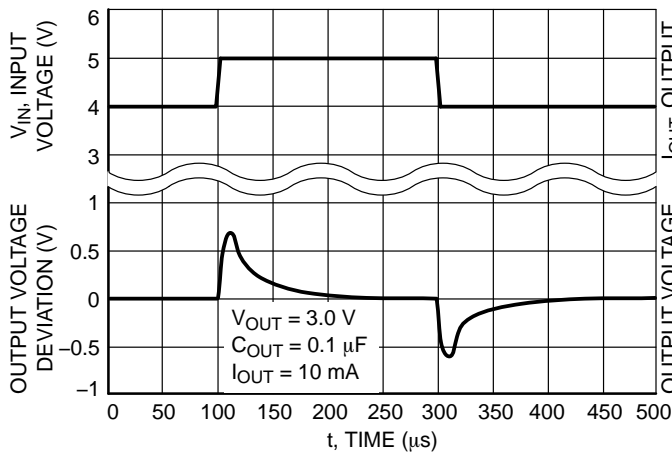


Figure 9. Line Transient Response

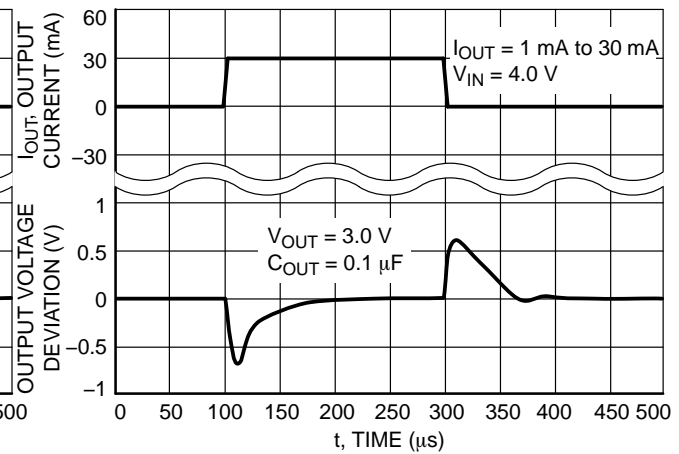


Figure 10. Load Transient Response

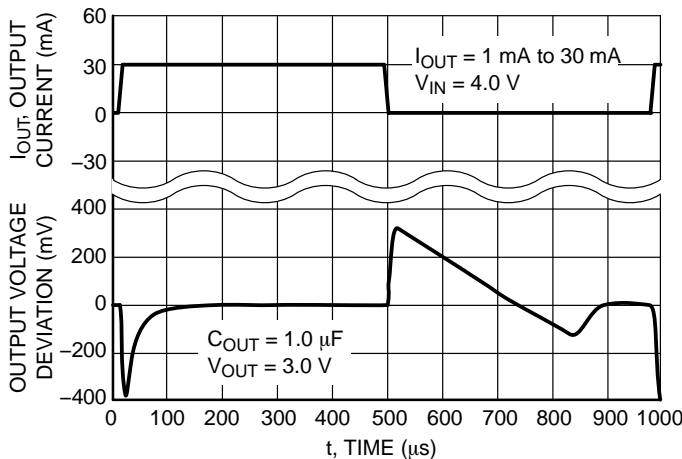


Figure 11. Load Transient Response

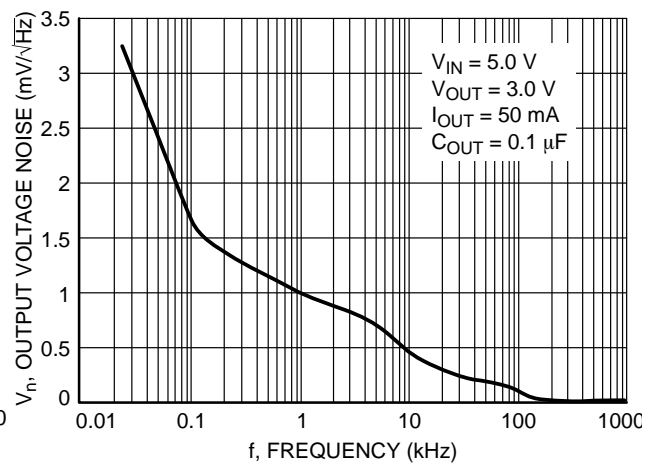


Figure 12. Output Voltage Noise

## DEFINITIONS

### Load Regulation

The change in output voltage for a change in output current at a constant temperature.

### Dropout Voltage

The input/output differential at which the regulator output no longer maintains regulation against further reductions in input voltage. Measured when the output drops 3.0% below its nominal. The junction temperature, load current, and minimum input supply requirements affect the dropout level.

### Maximum Power Dissipation

The maximum total dissipation for which the regulator will operate within its specifications.

### Quiescent Current

The quiescent current is the current which flows through the ground when the LDO operates without a load on its output: internal IC operation, bias, etc. When the LDO becomes loaded, this term is called the Ground current. It is actually the difference between the input current (measured through the LDO input pin) and the output current.

### Line Regulation

The change in output voltage for a change in input voltage. The measurement is made under conditions of low dissipation or by using pulse technique such that the average chip temperature is not significantly affected.

### Line Transient Response

Typical over and undershoot response when input voltage is excited with a given slope.

### Thermal Protection

Internal thermal shutdown circuitry is provided to protect the integrated circuit in the event that the maximum junction temperature is exceeded. When activated at typically 160°C, the regulator turns off. This feature is provided to prevent failures from accidental overheating.

### Maximum Package Power Dissipation

The maximum power package dissipation is the power dissipation level at which the junction temperature reaches its maximum operating value, i.e. 125°C. Depending on the ambient power dissipation and thus the maximum available output current.

## APPLICATIONS INFORMATION

A typical application circuit for the NCP562 and NCP563 series are shown in Figure 1 and Figure 2.

### Input Decoupling (C1)

A 1.0  $\mu\text{F}$  capacitor either ceramic or tantalum is recommended and should be connected close to the NCP562 package. Higher values and lower ESR will improve the overall line transient response.

TDK capacitor: C2012X5R1C105K, or C1608X5R1A105K

### Output Decoupling (C2)

The NCP562 and NCP563 are very stable regulators and do not require any specific Equivalent Series Resistance (ESR) or a minimum output current. Capacitors exhibiting ESRs ranging from a few  $\text{m}\Omega$  up to  $10\ \Omega$  can thus safely be used. The minimum decoupling value is 0.1  $\mu\text{F}$  and can be augmented to fulfill stringent load transient requirements. The regulator accepts ceramic chip capacitors as well as tantalum devices. Larger values improve noise rejection and load regulation transient response.

TDK capacitor: C2012X5R1C105K, C1608X5R1A105K, or C3216X7R1C105K

### Enable Operation (NCP562 ONLY)

The enable pin will turn on the regulator when pulled high and turn off the regulator when pulled low. These limits of threshold are covered in the electrical specification section of this data sheet. If the enable is not used, then the pin should be connected to  $V_{\text{in}}$ .

### Hints

Please be sure the  $V_{\text{in}}$  and GND lines are sufficiently wide. When the impedance of these lines is high, there is a chance to pick up noise or cause the regulator to malfunction.

Place external components, especially the output capacitor, as close as possible to the circuit, and make leads as short as possible.

### Thermal

As power across the NCP562 and NCP563 increases, it might become necessary to provide some thermal relief. The maximum power dissipation supported by the device is dependent upon board design and layout. Mounting pad configuration on the PCB, the board material and also the ambient temperature effect the rate of temperature rise for the part. This is stating that when the devices have good thermal conductivity through the PCB, the junction temperature will be relatively low with high power dissipation applications.

The maximum dissipation the package can handle is given by:

$$PD = \frac{T_{J(\text{max})} - T_A}{R_{\theta JA}}$$

If junction temperature is not allowed above the maximum  $125^\circ\text{C}$ , then the NCP562 and NCP563 can dissipate up to 250 mW @  $25^\circ\text{C}$ .

The power dissipated by the NCP562 and NCP563 can be calculated from the following equation:

$$P_{\text{tot}} = [V_{\text{in}} * I_{\text{gnd}} (I_{\text{out}})] + [V_{\text{in}} - V_{\text{out}}] * I_{\text{out}}$$

or

$$V_{\text{inMAX}} = \frac{P_{\text{tot}} + V_{\text{out}} * I_{\text{out}}}{I_{\text{gnd}} + I_{\text{out}}}$$

If an 80 mA output current is needed then the ground current from the data sheet is 2.5  $\mu\text{A}$ . For an NCP562 or NCP563 (3.0 V), the maximum input voltage will then be 6.0 V.

## NCP562, NCV562, NCP563, NCV563

### ORDERING INFORMATION

| Device         | Nominal Output Voltage | Marking | Package | Shipping†          |
|----------------|------------------------|---------|---------|--------------------|
| NCP562SQ15T1G  | 1.5                    | LDI     | SC82-AB | 3000 / Tape & Reel |
| NCP562SQ18T1G  | 1.8                    | LEY     |         |                    |
| NCP562SQ21T1G  | 2.1                    | AAA     |         |                    |
| NCP562SQ25T1G  | 2.5                    | LDK     |         |                    |
| NCV562SQ25T1G* |                        | AAG     |         |                    |
| NCP562SQ27T1G  | 2.7                    | LEZ     |         |                    |
| NCP562SQ28T1G  | 2.8                    | LDL     |         |                    |
| NCP562SQ30T1G  | 3.0                    | LDM     |         |                    |
| NCP562SQ33T1G  | 3.3                    | LDN     |         |                    |
| NCV562SQ33T1G* |                        | AAE     |         |                    |
| NCP562SQ35T1G  | 3.5                    | LJU     |         |                    |
| NCP562SQ50T1G  | 5.0                    | LDP     |         |                    |
| NCP563SQ15T1G  | 1.5                    | LDQ     |         |                    |
| NCV563SQ15T1G* |                        |         |         |                    |
| NCP563SQ18T1G  | 1.8                    | LFA     |         |                    |
| NCV563SQ18T1G* |                        |         |         |                    |
| NCP563SQ25T1G  | 2.5                    | LDS     |         |                    |
| NCP563SQ27T1G  | 2.7                    | LFB     |         |                    |
| NCP563SQ28T1G  | 2.8                    | LDT     |         |                    |
| NCP563SQ30T1G  | 3.0                    | LDU     |         |                    |
| NCV563SQ30T1G* |                        |         |         |                    |
| NCP563SQ33T1G  | 3.3                    | LDV     |         |                    |
| NCV563SQ33T1G* |                        |         |         |                    |
| NCP563SQ50T1G  | 5.0                    | LDX     |         |                    |

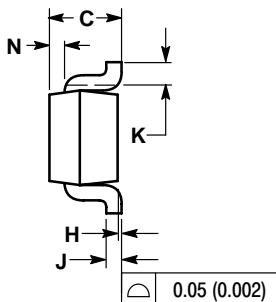
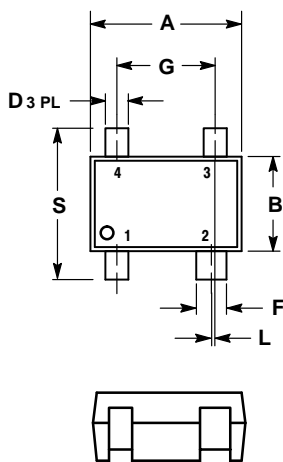
†For information on tape and reel specifications, including part orientation and tape sizes, please refer to our Tape and Reel Packaging Specifications Brochure, BRD8011/D.

\*NCV Prefix for Automotive and Other Applications Requiring Unique Site and Control Change Requirements; AEC-Q100 Qualified and PPAP Capable

# NCP562, NCV562, NCP563, NCV563

## PACKAGE DIMENSIONS

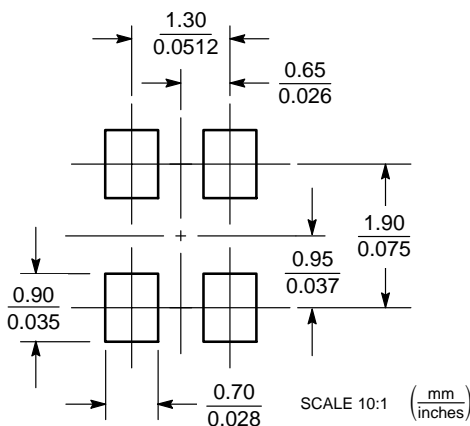
### SC-82AB CASE 419C-02 ISSUE F




- NOTES:
1. DIMENSIONING AND TOLERANCING PER ANSI Y14.5M, 1982.
  2. CONTROLLING DIMENSION: MILLIMETER.
  3. 419C-01 OBSOLETE. NEW STANDARD IS 419C-02.
  4. DIMENSIONS A AND B DO NOT INCLUDE MOLD FLASH, PROTRUSIONS, OR GATE BURRS.

| DIM | MILLIMETERS |      | INCHES    |       |
|-----|-------------|------|-----------|-------|
|     | MIN         | MAX  | MIN       | MAX   |
| A   | 1.80        | 2.20 | 0.071     | 0.087 |
| B   | 1.15        | 1.35 | 0.045     | 0.053 |
| C   | 0.80        | 1.10 | 0.031     | 0.043 |
| D   | 0.20        | 0.40 | 0.008     | 0.016 |
| F   | 0.30        | 0.50 | 0.012     | 0.020 |
| G   | 1.10        | 1.50 | 0.043     | 0.059 |
| H   | 0.00        | 0.10 | 0.000     | 0.004 |
| J   | 0.10        | 0.26 | 0.004     | 0.010 |
| K   | 0.10        | ---  | 0.004     | ---   |
| L   | 0.05 BSC    |      | 0.002 BSC |       |
| N   | 0.20 REF    |      | 0.008 REF |       |
| S   | 1.80        | 2.40 | 0.07      | 0.09  |

### SOLDERING FOOTPRINT\*



\*For additional information on our Pb-Free strategy and soldering details, please download the ON Semiconductor Soldering and Mounting Techniques Reference Manual, SOLDERRM/D.

ON Semiconductor and the  are registered trademarks of Semiconductor Components Industries, LLC (SCILLC) or its subsidiaries in the United States and/or other countries. SCILLC owns the rights to a number of patents, trademarks, copyrights, trade secrets, and other intellectual property. A listing of SCILLC's product/patent coverage may be accessed at [www.onsemi.com/site/pdf/Patent-Marketing.pdf](http://www.onsemi.com/site/pdf/Patent-Marketing.pdf). SCILLC reserves the right to make changes without further notice to any products herein. SCILLC makes no warranty, representation or guarantee regarding the suitability of its products for any particular purpose, nor does SCILLC assume any liability arising out of the application or use of any product or circuit, and specifically disclaims any and all liability, including without limitation special, consequential or incidental damages. "Typical" parameters which may be provided in SCILLC data sheets and/or specifications can and do vary in different applications and actual performance may vary over time. All operating parameters, including "Typicals" must be validated for each customer application by customer's technical experts. SCILLC does not convey any license under its patent rights nor the rights of others. SCILLC products are not designed, intended, or authorized for use as components in systems intended for surgical implant into the body, or other applications intended to support or sustain life, or for any other application in which the failure of the SCILLC product could create a situation where personal injury or death may occur. Should Buyer purchase or use SCILLC products for any such unintended or unauthorized application, Buyer shall indemnify and hold SCILLC and its officers, employees, subsidiaries, affiliates, and distributors harmless against all claims, costs, damages, and expenses, and reasonable attorney fees arising out of, directly or indirectly, any claim of personal injury or death associated with such unintended or unauthorized use, even if such claim alleges that SCILLC was negligent regarding the design or manufacture of the part. SCILLC is an Equal Opportunity/Affirmative Action Employer. This literature is subject to all applicable copyright laws and is not for resale in any manner.

### PUBLICATION ORDERING INFORMATION

#### LITERATURE FULFILLMENT:

Literature Distribution Center for ON Semiconductor  
P.O. Box 5163, Denver, Colorado 80217 USA  
Phone: 303-675-2175 or 800-344-3860 Toll Free USA/Canada  
Fax: 303-675-2176 or 800-344-3867 Toll Free USA/Canada  
Email: [orderlit@onsemi.com](mailto:orderlit@onsemi.com)

**N. American Technical Support:** 800-282-9855 Toll Free  
USA/Canada  
**Europe, Middle East and Africa Technical Support:**  
Phone: 421 33 790 2910  
**Japan Customer Focus Center**  
Phone: 81-3-5817-1050

**ON Semiconductor Website:** [www.onsemi.com](http://www.onsemi.com)

**Order Literature:** <http://www.onsemi.com/orderlit>

For additional information, please contact your local Sales Representative

## Looking for pricing, stock, or lifecycle information?

Click below to explore more details on WIN SOURCE:

- ⊖ [View NCV562SQ33T1G on WIN SOURCE](#)
- ⊖ [ON Semiconductor Information](#)

## Optimize Your Supply Chain with WIN SOURCE Solutions

- ✓ Global Sourcing Solution
- ✓ Obsolete Management
- ✓ Cost Control Management
- ✓ Shortage Management
- ✓ Alternative Solution
- ✓ Excess Inventory Management