



**THE DATASHEET OF
MC79M15BTG**



MC79M00 Series

MAXIMUM RATINGS ($T_A = 25^\circ\text{C}$, unless otherwise noted.)

| Rating | Symbol | Value | Unit |
|---|---------------|--------------------|--------------------|
| Input Voltage | V_I | -35 | Vdc |
| Power Dissipation | | | |
| Case 221A (TO-220-3) | | | |
| $T_A = 25^\circ\text{C}$ | P_D | Internally Limited | W |
| Thermal Resistance, Junction-to-Ambient | θ_{JA} | 65 | $^\circ\text{C/W}$ |
| Thermal Resistance, Junction-to-Case | θ_{JC} | 5.0 | $^\circ\text{C/W}$ |
| Case 369C (DPAK-3) | | | |
| $T_A = 25^\circ\text{C}$ | P_D | Internally Limited | W |
| Thermal Resistance, Junction-to-Ambient | θ_{JA} | 92 | $^\circ\text{C/W}$ |
| Thermal Resistance, Junction-to-Case | θ_{JC} | 6.0 | $^\circ\text{C/W}$ |
| Storage Junction Temperature | T_{stg} | -65 to +150 | $^\circ\text{C}$ |
| Operating Junction Temperature Range | T_J | -40 to +150 | $^\circ\text{C}$ |

Stresses exceeding Maximum Ratings may damage the device. Maximum Ratings are stress ratings only. Functional operation above the Recommended Operating Conditions is not implied. Extended exposure to stresses above the Recommended Operating Conditions may affect device reliability.

*This device series contains ESD protection and exceeds the following tests:

- Human Body Model 2000 V per MIL_STD_883, Method 3015
- Machine Model Method 200 V

MC79M05B, C

ELECTRICAL CHARACTERISTICS ($V_I = -10\text{ V}$, $I_O = 350\text{ mA}$, T_{low} to T_{high} (Note 2), unless otherwise noted.)

| Characteristic | Symbol | Min | Typ | Max | Unit |
|--|-------------------------|-------|------------|------------|----------------------------|
| Output Voltage ($T_J = 25^\circ\text{C}$) | V_O | -4.8 | -5.0 | -5.2 | Vdc |
| Line Regulation, $T_J = 25^\circ\text{C}$ (Note 1) -7.0 Vdc $\geq V_I \geq$ -25 Vdc -8.0 Vdc $\geq V_I \geq$ -18 Vdc | Reg_{line} | - | 7.0 2.0 | 50 30 | mV |
| Load Regulation, $T_J = 25^\circ\text{C}$ (Note 1) $5.0\text{ mA} \leq I_O \leq 500\text{ mA}$ | Reg_{load} | - | 30 | 100 | mV |
| Output Voltage -7.0 Vdc $\geq V_I \geq$ -25 Vdc, $5.0\text{ mA} \leq I_O \leq 350\text{ mA}$ | V_O | -4.75 | - | -5.25 | Vdc |
| Input Bias Current ($T_J = 25^\circ\text{C}$) | I_{IB} | - | 4.3 | 8.0 | mA |
| Input Bias Current Change -8.0 Vdc $\geq V_I \geq$ -25 Vdc, $I_O = 350\text{ mA}$ $5.0\text{ mA} \leq I_O \leq 350\text{ mA}$, $V_I = -10\text{ V}$ | ΔI_{IB} | - | - | 0.4 0.4 | mA |
| Output Noise Voltage, $T_A = 25^\circ\text{C}$, $10\text{ Hz} \leq f \leq 100\text{ kHz}$ | V_n | - | 40 | - | μV |
| Ripple Rejection ($f = 120\text{ Hz}$) | RR | 54 | 66 | - | dB |
| Dropout Voltage $I_O = 500\text{ mA}$, $T_J = 25^\circ\text{C}$ | $V_I - V_O$ | - | 1.1 | - | Vdc |
| Average Temperature Coefficient of Output Voltage $I_O = 5.0\text{ mA}$, $0^\circ\text{C} \leq T_J \leq 125^\circ\text{C}$ | $\Delta V_O / \Delta T$ | - | 0.2 | - | $\text{mV}/^\circ\text{C}$ |

- Load and line regulation are specified at constant temperature. Change in V_O due to heating effects must be taken into account separately. Pulse testing with low duty cycle is used.
- $B = T_{low}$ to T_{high} , $-40^\circ\text{C} < T_J < 125^\circ\text{C}$ $C = T_{low}$ to T_{high} , $0^\circ\text{C} < T_J < 125^\circ\text{C}$.

MC79M00 Series

MC79M08B, C

ELECTRICAL CHARACTERISTICS ($V_I = -10\text{ V}$, $I_O = 350\text{ mA}$, T_{low} to T_{high} (Note 4), unless otherwise noted.)

| Characteristic | Symbol | Min | Typ | Max | Unit |
|---|-------------------------|------|------------|------------|----------------------------|
| Output Voltage ($T_J = 25^\circ\text{C}$) | V_O | -7.7 | -8.0 | -8.3 | Vdc |
| Line Regulation, $T_J = 25^\circ\text{C}$ (Note 3) -10.5 Vdc $\geq V_I \geq$ -25 Vdc -11 Vdc $\geq V_I \geq$ -21 Vdc | Reg_{line} | - | 5.0 3.0 | 80 50 | mV |
| Load Regulation, $T_J = 25^\circ\text{C}$ (Note 3) $5.0\text{ mA} \leq I_O \leq 500\text{ mA}$ | Reg_{load} | - | 30 | 100 | mV |
| Output Voltage -10.5 Vdc $\geq V_I \geq$ -25 Vdc, $5.0\text{ mA} \leq I_O \leq 350\text{ mA}$ | V_O | -7.6 | -8.0 | -8.4 | Vdc |
| Input Bias Current ($T_J = 25^\circ\text{C}$) | I_{IB} | - | - | 8.0 | mA |
| Input Bias Current Change -10.5 Vdc $\geq V_I \geq$ -25 Vdc, $I_O = 350\text{ mA}$ $5.0\text{ mA} \leq I_O \leq 350\text{ mA}$, $V_I = -10\text{ V}$ | ΔI_{IB} | - | - | 0.4 0.4 | mA |
| Output Noise Voltage, $T_A = 25^\circ\text{C}$, $10\text{ Hz} \leq f \leq 100\text{ kHz}$ | V_n | - | 60 | - | μV |
| Ripple Rejection ($f = 120\text{ Hz}$) | RR | 54 | 63 | - | dB |
| Dropout Voltage $I_O = 500\text{ mA}$, $T_J = 25^\circ\text{C}$ | $V_I - V_O$ | - | 1.1 | - | Vdc |
| Average Temperature Coefficient of Output Voltage $I_O = 5.0\text{ mA}$, $0^\circ\text{C} \leq T_J \leq 125^\circ\text{C}$ | $\Delta V_O / \Delta T$ | - | 0.4 | - | $\text{mV}/^\circ\text{C}$ |

3. Load and line regulation are specified at constant temperature. Change in V_O due to heating effects must be taken into account separately. Pulse testing with low duty cycle is used.
4. B = T_{low} to T_{high} , $-40^\circ\text{C} < T_J < 125^\circ\text{C}$
C = T_{low} to T_{high} , $0^\circ\text{C} < T_J < 125^\circ\text{C}$

MC79M12B, C

ELECTRICAL CHARACTERISTICS ($V_I = -19\text{ V}$, $I_O = 350\text{ mA}$, T_{low} to T_{high} (Note 6), unless otherwise noted.)

| Characteristic | Symbol | Min | Typ | Max | Unit |
|---|-------------------------|-------|------------|------------|----------------------------|
| Output Voltage ($T_J = 25^\circ\text{C}$) | V_O | -11.5 | -12 | -12.5 | Vdc |
| Line Regulation, $T_J = 25^\circ\text{C}$ (Note 5) -14.5 Vdc $\geq V_I \geq$ -30 Vdc -15 Vdc $\geq V_I \geq$ -25 Vdc | Reg_{line} | - | 5.0 3.0 | 80 50 | mV |
| Load Regulation, $T_J = 25^\circ\text{C}$ (Note 5) $5.0\text{ mA} \leq I_O \leq 500\text{ mA}$ | Reg_{load} | - | 30 | 240 | mV |
| Output Voltage -14.5 Vdc $\geq V_I \geq$ -30 Vdc, $5.0\text{ mA} \leq I_O \leq 350\text{ mA}$ | V_O | -11.4 | - | -12.6 | Vdc |
| Input Bias Current ($T_J = 25^\circ\text{C}$) | I_{IB} | - | 4.4 | 8.0 | mA |
| Input Bias Current Change -14.5 Vdc $\geq V_I \geq$ -30 Vdc, $I_O = 350\text{ mA}$ $5.0\text{ mA} \leq I_O \leq 350\text{ mA}$, $V_I = -19\text{ V}$ | ΔI_{IB} | - | - | 0.4 0.4 | mA |
| Output Noise Voltage, $T_A = 25^\circ\text{C}$, $10\text{ Hz} \leq f \leq 100\text{ kHz}$ | V_n | - | 75 | - | μV |
| Ripple Rejection ($f = 120\text{ Hz}$) | RR | 54 | 60 | - | dB |
| Dropout Voltage $I_O = 500\text{ mA}$, $T_J = 25^\circ\text{C}$ | $V_I - V_O$ | - | 1.1 | - | Vdc |
| Average Temperature Coefficient of Output Voltage $I_O = 5.0\text{ mA}$, $0^\circ\text{C} \leq T_J \leq 125^\circ\text{C}$ | $\Delta V_O / \Delta T$ | - | -0.8 | - | $\text{mV}/^\circ\text{C}$ |

5. Load and line regulation are specified at constant temperature. Change in V_O due to heating effects must be taken into account separately. Pulse testing with low duty cycle is used.
6. B = T_{low} to T_{high} , $-40^\circ\text{C} < T_J < 125^\circ\text{C}$
C = T_{low} to T_{high} , $0^\circ\text{C} < T_J < 125^\circ\text{C}$

MC79M00 Series

MC79M15B, C

ELECTRICAL CHARACTERISTICS ($V_I = -23\text{ V}$, $I_O = 350\text{ mA}$, T_{low} to T_{high} (Note 8), unless otherwise noted.)

| Characteristic | Symbol | Min | Typ | Max | Unit |
|---|-------------------------|--------|------------|------------|----------------------------|
| Output Voltage ($T_J = 25^\circ\text{C}$) | V_O | -14.4 | -15 | -15.6 | Vdc |
| Line Regulation, $T_J = 25^\circ\text{C}$ (Note 7) -17.5 Vdc $\geq V_I \geq$ -30 Vdc -18 Vdc $\geq V_I \geq$ -28 Vdc | Reg_{line} | - | 5.0 3.0 | 80 50 | mV |
| Load Regulation, $T_J = 25^\circ\text{C}$ (Note 7) $5.0\text{ mA} \leq I_O \leq 500\text{ mA}$ | Reg_{load} | - | 30 | 240 | mV |
| Output Voltage -17.5 Vdc $\geq V_I \geq$ -30 Vdc, $5.0\text{ mA} \leq I_O \leq 350\text{ mA}$ | V_O | -14.25 | - | -15.75 | Vdc |
| Input Bias Current ($T_J = 25^\circ\text{C}$) | I_{IB} | - | 4.4 | 8.0 | mA |
| Input Bias Current Change -17.5 Vdc $\geq V_I \geq$ -30 Vdc, $I_O = 350\text{ mA}$ $5.0\text{ mA} \leq I_O \leq 350\text{ mA}$, $V_I = -23\text{ V}$ | ΔI_{IB} | - | - | 0.4 0.4 | mA |
| Output Noise Voltage, $T_A = 25^\circ\text{C}$, $10\text{ Hz} \leq f \leq 100\text{ kHz}$ | V_n | - | 90 | - | μV |
| Ripple Rejection ($f = 120\text{ Hz}$) | RR | 54 | 60 | - | dB |
| Dropout Voltage $I_O = 500\text{ mA}$, $T_J = 25^\circ\text{C}$ | $V_I - V_O$ | - | 1.1 | - | Vdc |
| Average Temperature Coefficient of Output Voltage $I_O = 5.0\text{ mA}$, $0^\circ\text{C} \leq T_J \leq 125^\circ\text{C}$ | $\Delta V_O / \Delta T$ | - | -1.0 | - | $\text{mV}/^\circ\text{C}$ |

7. Load and line regulation are specified at constant temperature. Change in V_O due to heating effects must be taken into account separately. Pulse testing with low duty cycle is used.
8. B = T_{low} to T_{high} , $-40^\circ\text{C} < T_J < 125^\circ\text{C}$
C = T_{low} to T_{high} , $0^\circ\text{C} < T_J < 125^\circ\text{C}$



Figure 1. DPAK-3 Thermal Resistance and Maximum Power Dissipation versus P.C.B. Copper Length

MC79M00 Series

Protection Diodes

When external capacitors are used with MC79M00 series regulator it is sometimes necessary to add protection diodes to prevent the capacitors from discharging through low current points into the regulator or from output polarity reversals. Generally, no protection diode is required for values of output capacitance less than $10\mu\text{F}$. Figure 2 shows the MC79M15 with the recommended protection diodes.

- Opposite Polarity Protection

Diode D1 protects the regulator from output polarity reversals during startup, power off and short-circuit operation.

- Reverse-bias Protection

Diode D2 prevents output capacitor from discharging through the MC79M15 during an input short circuit or fast switch off of power supply.

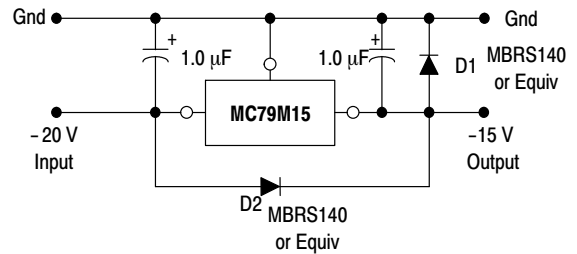


Figure 2. Protection Diodes

MC79M00 Series

ORDERING INFORMATION

| Device | Output Voltage Tolerance | Operating Temperature Range | Package | Shipping [†] |
|---------------|--------------------------|--|--|-----------------------|
| MC79M05BDT | 4.0% | $T_J = -40^{\circ}\text{C to } +125^{\circ}\text{C}$ | DPAK | 75 Units / Rail |
| MC79M05BDTG | | | DPAK (Pb-Free) | 75 Units / Rail |
| MC79M05BDTRK | | | DPAK | 2500 Units / Reel |
| MC79M05BDTRKG | | | DPAK (Pb-Free) | 2500 Units / Reel |
| MC79M05BT | | | TO-220 | 50 Units / Rail |
| MC79M05BTG | | | TO-220 (Pb-Free) | 50 Units / Rail |
| MC79M05CDT | | $T_J = 0^{\circ}\text{C to } +125^{\circ}\text{C}$ | DPAK | 75 Units / Rail |
| MC79M05CDTG | | | DPAK (Pb-Free) | 75 Units / Rail |
| MC79M05CDTRK | | | DPAK | 2500 Units / Reel |
| MC79M05CDTRKG | | | DPAK (Pb-Free) | 2500 Units / Reel |
| MC79M05CT | | | TO-220 | 50 Units / Rail |
| MC79M05CTG | | | TO-220 (Pb-Free) | 50 Units / Rail |
| MC79M08BDT | | $T_J = -40^{\circ}\text{C to } +125^{\circ}\text{C}$ | DPAK | 75 Units / Rail |
| MC79M08BDTRK | | | DPAK | 2500 Units / Reel |
| MC79M08BDTRKG | | | DPAK (Pb-Free) | 2500 Units / Reel |
| MC79M08BT | | | TO-220 | 50 Units / Rail |
| MC79M08BTG | | | TO-220 (Pb-Free) | 50 Units / Rail |
| MC79M08CDT | | | $T_J = 0^{\circ}\text{C to } +125^{\circ}\text{C}$ | DPAK |
| MC79M08CDTG | | DPAK (Pb-Free) | | 75 Units / Rail |
| MC79M08CDTRK | | DPAK | | 2500 Units / Reel |
| MC79M08CDTRKG | | DPAK (Pb-Free) | | 2500 Units / Reel |
| MC79M08CT | | TO-220 | | 50 Units / Rail |
| MC79M08CTG | | TO-220 (Pb-Free) | | 50 Units / Rail |
| MC79M12BDT | | $T_J = -40^{\circ}\text{C to } +125^{\circ}\text{C}$ | DPAK | 75 Units / Rail |
| MC79M12BDTG | | | DPAK (Pb-Free) | 75 Units / Rail |
| MC79M12BDTRK | | | DPAK | 2500 Units / Reel |
| MC79M12BDTRKG | | | DPAK (Pb-Free) | 2500 Units / Reel |
| MC79M12BT | | | TO-220 | 50 Units / Rail |
| MC79M12BTG | | | TO-220 (Pb-Free) | 50 Units / Rail |
| MC79M12CDT | | $T_J = 0^{\circ}\text{C to } +125^{\circ}\text{C}$ | DPAK | 75 Units / Rail |
| MC79M12CDTG | DPAK (Pb-Free) | | 75 Units / Rail | |
| MC79M12CDTRK | DPAK | | 2500 Units / Reel | |
| MC79M12CDTRKG | DPAK (Pb-Free) | | 2500 Units / Reel | |
| MC79M12CT | TO-220 | | 50 Units / Rail | |
| MC79M12CTG | TO-220 (Pb-Free) | | 50 Units / Rail | |

[†]For information on tape and reel specifications, including part orientation and tape sizes, please refer to our Tape and Reel Packaging Specifications Brochure, BRD8011/D.

MC79M00 Series

ORDERING INFORMATION

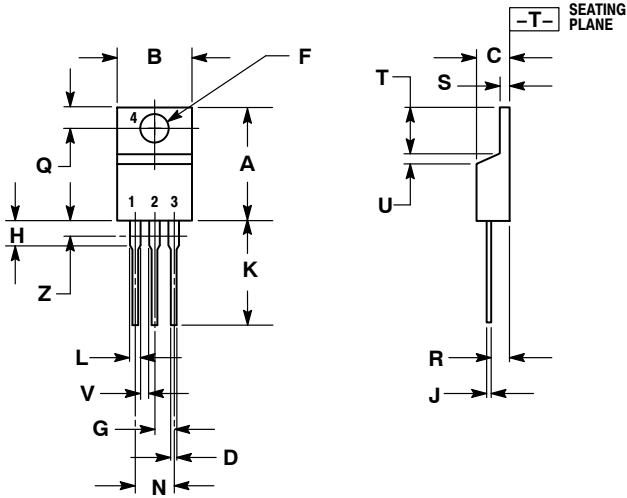
| Device | Output Voltage Tolerance | Operating Temperature Range | Package | Shipping† |
|---------------|--------------------------|---|------------------|-------------------|
| MC79M15BDT | 4.0% | $T_J = -40^{\circ}\text{C}$ to $+125^{\circ}\text{C}$ | DPAK | 75 Units / Rail |
| MC79M15BDTG | | | DPAK (Pb-Free) | 75 Units / Rail |
| MC79M15BDTRK | | | DPAK | 2500 Units / Reel |
| MC79M15BDTRKG | | | DPAK (Pb-Free) | 2500 Units / Reel |
| MC79M15BT | | | TO-220 | 50 Units / Rail |
| MC79M15BTG | | | TO-220 (Pb-Free) | 50 Units / Rail |
| MC79M15CDT | | $T_J = 0^{\circ}\text{C}$ to $+125^{\circ}\text{C}$ | DPAK | 75 Units / Rail |
| MC79M15CDTG | | | DPAK (Pb-Free) | 75 Units / Rail |
| MC79M15CDTRK | | | DPAK | 2500 Units / Reel |
| MC79M15CDTRKG | | | DPAK (Pb-Free) | 2500 Units / Reel |
| MC79M15CT | | | TO-220 | 50 Units / Rail |
| MC79M15CTG | | | TO-220 (Pb-Free) | 50 Units / Rail |

†For information on tape and reel specifications, including part orientation and tape sizes, please refer to our Tape and Reel Packaging Specifications Brochure, BRD8011/D.

MC79M00 Series

PACKAGE DIMENSIONS

TO-220, SINGLE GAUGE CASE 221AB ISSUE A



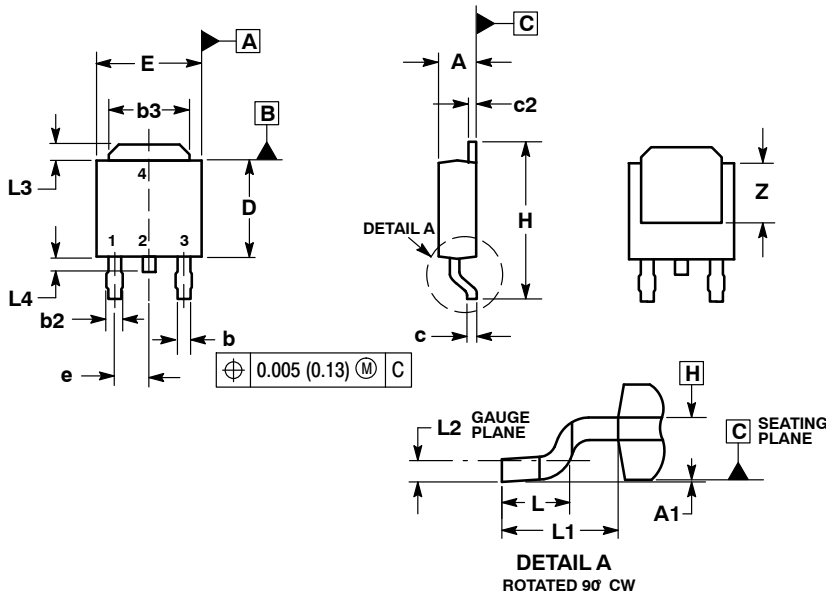
- NOTES:
1. DIMENSIONING AND TOLERANCING PER ANSI Y14.5M, 1982.
 2. CONTROLLING DIMENSION: INCHES.
 3. DIMENSION Z DEFINES A ZONE WHERE ALL BODY AND LEAD IRREGULARITIES ARE ALLOWED.
 4. PRODUCT SHIPPED PRIOR TO 2008 HAD DIMENSIONS S = 0.045 - 0.055 INCHES (1.143 - 1.397 MM)

| DIM | INCHES | | MILLIMETERS | |
|-----|--------|-------|-------------|-------|
| | MIN | MAX | MIN | MAX |
| A | 0.570 | 0.620 | 14.48 | 15.75 |
| B | 0.380 | 0.405 | 9.66 | 10.28 |
| C | 0.160 | 0.190 | 4.07 | 4.82 |
| D | 0.025 | 0.035 | 0.64 | 0.88 |
| F | 0.142 | 0.147 | 3.61 | 3.73 |
| G | 0.095 | 0.105 | 2.42 | 2.66 |
| H | 0.110 | 0.155 | 2.80 | 3.93 |
| J | 0.018 | 0.025 | 0.46 | 0.64 |
| K | 0.500 | 0.562 | 12.70 | 14.27 |
| L | 0.045 | 0.060 | 1.15 | 1.52 |
| N | 0.190 | 0.210 | 4.83 | 5.33 |
| Q | 0.100 | 0.120 | 2.54 | 3.04 |
| R | 0.080 | 0.110 | 2.04 | 2.79 |
| S | 0.020 | 0.024 | 0.508 | 0.61 |
| T | 0.235 | 0.255 | 5.97 | 6.47 |
| U | 0.000 | 0.050 | 0.00 | 1.27 |
| V | 0.045 | --- | 1.15 | --- |
| Z | --- | 0.080 | --- | 2.04 |

MC79M00 Series

PACKAGE DIMENSIONS

DPAK-3
DT SUFFIX
CASE 369C
ISSUE D

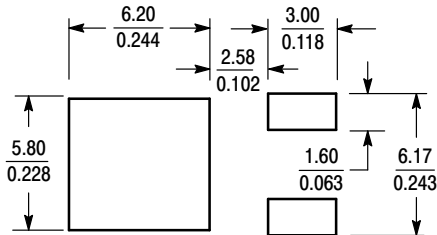


NOTES:

1. DIMENSIONING AND TOLERANCING PER ASME Y14.5M, 1994.
2. CONTROLLING DIMENSION: INCHES.
3. THERMAL PAD CONTOUR OPTIONAL WITHIN DIMENSIONS b3, L3 and Z.
4. DIMENSIONS D AND E DO NOT INCLUDE MOLD FLASH, PROTRUSIONS, OR BURRS. MOLD FLASH, PROTRUSIONS, OR GATE BURRS SHALL NOT EXCEED 0.006 INCHES PER SIDE.
5. DIMENSIONS D AND E ARE DETERMINED AT THE OUTERMOST EXTREMES OF THE PLASTIC BODY.
6. DATUMS A AND B ARE DETERMINED AT DATUM PLANE H.

| DIM | INCHES | | MILLIMETERS | |
|-----|--------|-------|-------------|-------|
| | MIN | MAX | MIN | MAX |
| A | 0.086 | 0.094 | 2.18 | 2.38 |
| A1 | 0.000 | 0.005 | 0.00 | 0.13 |
| b | 0.025 | 0.035 | 0.63 | 0.89 |
| b2 | 0.030 | 0.045 | 0.76 | 1.14 |
| b3 | 0.180 | 0.215 | 4.57 | 5.46 |
| c | 0.018 | 0.024 | 0.46 | 0.61 |
| c2 | 0.018 | 0.024 | 0.46 | 0.61 |
| D | 0.235 | 0.245 | 5.97 | 6.22 |
| E | 0.250 | 0.265 | 6.35 | 6.73 |
| e | 0.090 | BSC | 2.29 | BSC |
| H | 0.370 | 0.410 | 9.40 | 10.41 |
| L | 0.055 | 0.070 | 1.40 | 1.78 |
| L1 | 0.108 | REF | 2.74 | REF |
| L2 | 0.020 | BSC | 0.51 | BSC |
| L3 | 0.035 | 0.050 | 0.89 | 1.27 |
| L4 | --- | 0.040 | --- | 1.01 |
| Z | 0.155 | --- | 3.93 | --- |

SOLDERING FOOTPRINT*



SCALE 3:1 (mm / inches)

*For additional information on our Pb-Free strategy and soldering details, please download the ON Semiconductor Soldering and Mounting Techniques Reference Manual, SOLDERRM/D.

ON Semiconductor and are registered trademarks of Semiconductor Components Industries, LLC (SCILLC). SCILLC owns the rights to a number of patents, trademarks, copyrights, trade secrets, and other intellectual property. A listing of SCILLC's product/patent coverage may be accessed at www.onsemi.com/site/pdf/Patent-Marketing.pdf. SCILLC reserves the right to make changes without further notice to any products herein. SCILLC makes no warranty, representation or guarantee regarding the suitability of its products for any particular purpose, nor does SCILLC assume any liability arising out of the application or use of any product or circuit, and specifically disclaims any and all liability, including without limitation special, consequential or incidental damages. "Typical" parameters which may be provided in SCILLC data sheets and/or specifications can and do vary in different applications and actual performance may vary over time. All operating parameters, including "Typicals" must be validated for each customer application by customer's technical experts. SCILLC does not convey any license under its patent rights nor the rights of others. SCILLC products are not designed, intended, or authorized for use as components in systems intended for surgical implant into the body, or other applications intended to support or sustain life, or for any other application in which the failure of the SCILLC product could create a situation where personal injury or death may occur. Should Buyer purchase or use SCILLC products for any such unintended or unauthorized application, Buyer shall indemnify and hold SCILLC and its officers, employees, subsidiaries, affiliates, and distributors harmless against all claims, costs, damages, and expenses, and reasonable attorney fees arising out of, directly or indirectly, any claim of personal injury or death associated with such unintended or unauthorized use, even if such claim alleges that SCILLC was negligent regarding the design or manufacture of the part. SCILLC is an Equal Opportunity/Affirmative Action Employer. This literature is subject to all applicable copyright laws and is not for resale in any manner.

PUBLICATION ORDERING INFORMATION

LITERATURE FULFILLMENT:
Literature Distribution Center for ON Semiconductor
P.O. Box 5163, Denver, Colorado 80217 USA
Phone: 303-675-2175 or 800-344-3860 Toll Free USA/Canada
Fax: 303-675-2176 or 800-344-3867 Toll Free USA/Canada
Email: orderlit@onsemi.com

N. American Technical Support: 800-282-9855 Toll Free
USA/Canada
Europe, Middle East and Africa Technical Support:
Phone: 421 33 790 2910
Japan Customer Focus Center
Phone: 81-3-5817-1050

ON Semiconductor Website: www.onsemi.com
Order Literature: <http://www.onsemi.com/orderlit>
For additional information, please contact your local Sales Representative

Looking for pricing, stock, or lifecycle information?

Click below to explore more details on WIN SOURCE:

 [View MC79M15BTG on WIN SOURCE](#)

 [ON Semiconductor](#) Information

Optimize Your Supply Chain with WIN SOURCE Solutions

-  Global Sourcing Solution
-  Obsolete Management
-  Cost Control Management
-  Shortage Management
-  Alternative Solution
-  Excess Inventory Management