



**THE DATASHEET OF  
NCV8505D2T33R4G**



# NCV8505 Series

## LDO Linear Regulators - Micropower, ENABLE, DELAY, RESET

### 400 mA

The NCV8505 is a family of precision micropower voltage regulators. Their output current capability is 400 mA. The family has output voltage options for Adjustable, 2.5 V, 3.3 V and 5.0 V.

The output voltage is accurate within  $\pm 2.0\%$  with a maximum dropout voltage of 0.6 V at 400 mA. Low quiescent current is a feature drawing less than 1.0  $\mu\text{A}$  with  $\text{ENABLE} = 0\text{ V}$ . With  $\text{ENABLE} = 5.0\text{ V}$ , the part only draws 200  $\mu\text{A}$  with 100  $\mu\text{A}$  load. This part is ideal for any and all battery operated microprocessor equipment.

Microprocessor control logic includes an active  $\overline{\text{RESET}}$  (with DELAY).

The active  $\overline{\text{RESET}}$  circuit operates correctly at an output voltage as low as 1.0 V. The  $\overline{\text{RESET}}$  function is activated during the power up sequence or during normal operation if the output voltage drops below the regulation limits.

The regulator is protected against reverse battery, short circuit, and thermal overload conditions. The device can withstand load dump transients making it suitable for use in automotive environments. The device has also been optimized for EMC conditions.

### Features

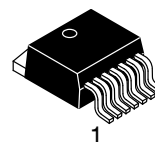
- Output Voltage Options: Adjustable, 2.5 V, 3.3 V, 5.0 V
- $\pm 2.0\%$  Output
- Low  $< 1.0\ \mu\text{A}$  Sleep Current
- Low 200  $\mu\text{A}$  Quiescent Current
- Fixed or Adjustable Output Voltage
- Active  $\overline{\text{RESET}}$
- ENABLE
- 400 mA Output Current Capability
- Fault Protection
  - ◆ +60 V Peak Transient Voltage
  - ◆ -15 V Reverse Voltage
  - ◆ Short Circuit
  - ◆ Thermal Overload
- NCV Prefix for Automotive and Other Applications Requiring Site and Change Control
- AEC Qualified
- PPAP Capable
- These are Pb-Free Devices



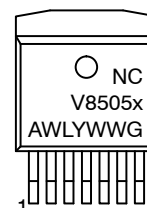
ON Semiconductor®

<http://onsemi.com>

### MARKING DIAGRAM



D<sup>2</sup>PAK-7  
DPS SUFFIX  
CASE 936AB



- x = Voltage Ratings as Indicated Below:
- A = Adjustable
  - 2 = 2.5 V
  - 3 = 3.3 V
  - 5 = 5.0 V
- A = Assembly Location  
WL = Wafer Lot  
Y = Year  
WW = Work Week  
G = Pb-Free Package

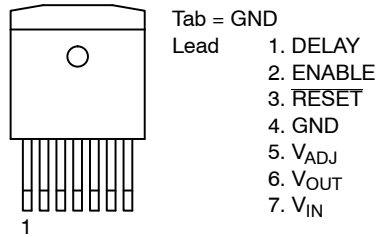
### ORDERING INFORMATION

See detailed ordering and shipping information in the package dimensions section on page 11 of this data sheet.

# NCV8505 Series

## PIN CONNECTIONS

### ADJUSTABLE OUTPUT



### FIXED OUTPUT

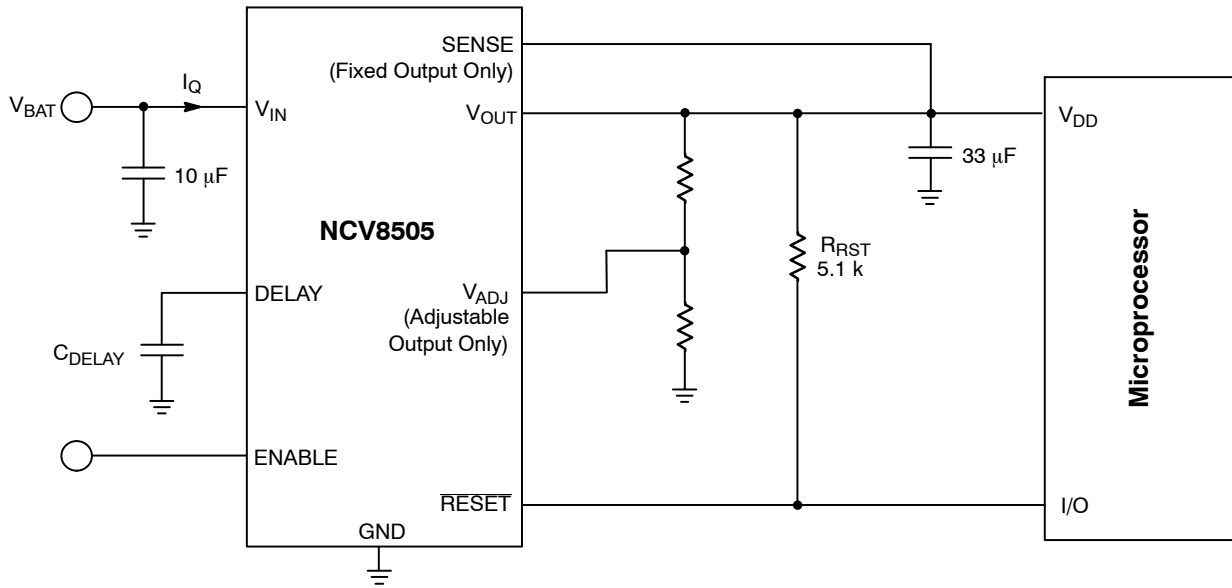
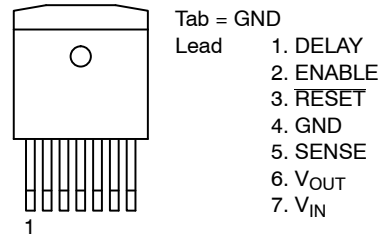


Figure 1. Application Diagram

# NCV8505 Series

## MAXIMUM RATINGS

| Rating  | Value   | Unit              |              |
|---|---|-------------------|--------------|
| $V_{IN}$ (DC)   | -15 to 45   | V                 |              |
| Peak Transient Voltage (46 V Load Dump @ $V_{IN} = 14$ V) | 60  | V                 |              |
| Operating Voltage   | 45  | V                 |              |
| $V_{OUT}$ (DC)  | -0.3 to 16  | V                 |              |
| Voltage Range (RESET, DELAY)                              | -0.3 to 10  | V                 |              |
| Input Voltage Range: $V_{ADJ}$                            | -0.3 to 16  | V                 |              |
| Input Voltage Range (ENABLE)                              | -0.3 to 10*   | V                 |              |
| ESD Susceptibility (Human Body Model)<br>(Machine Model)  | 4.0<br>200  | kV<br>V           |              |
| Junction Temperature, $T_J$                               | -40 to +150   | °C                |              |
| Storage Temperature, $T_S$                                | -55 to 150  | °C                |              |
| Package Thermal Resistance, 7 Lead D <sup>2</sup> PAK     | Junction-to-Case, $R_{\theta JC}$<br>Junction-to-Ambient, $R_{\theta JA}$ | 2.0<br>10-50**    | °C/W<br>°C/W |
| Lead Temperature Soldering:                               | Reflow: (SMD styles only) (Note 1)  | 240 peak (Note 2) | °C           |

Stresses exceeding Maximum Ratings may damage the device. Maximum Ratings are stress ratings only. Functional operation above the Recommended Operating Conditions is not implied. Extended exposure to stresses above the Recommended Operating Conditions may affect device reliability.

- 60 second maximum above 183°C.
- 5°C/+0°C allowable conditions.

\*Reference Figure 16 for switched-battery ENABLE application.

\*\*Depending on thermal properties of substrate,  $R_{\theta JA} = R_{\theta JC} + R_{\theta CA}$ .

**ELECTRICAL CHARACTERISTICS** ( $I_{OUT} = 1.0$  mA, ENABLE = 5.0 V,  $-40^\circ\text{C} \leq T_J \leq 150^\circ\text{C}$ ;  $V_{IN}$  = dependent on voltage option (Note 3); unless otherwise specified.)

| Characteristic  | Test Conditions  | Min            | Typ            | Max            | Unit          |
|---|--|----------------|----------------|----------------|---------------|
| <b>Output Stage</b>   |  |                |                |                |               |
| Output Voltage for 2.5 V Option ( $V_O$ )                                       | $6.5 \text{ V} < V_{IN} < 16 \text{ V}$ , $1.0 \text{ mA} \leq I_{OUT} \leq 400 \text{ mA}$  | 2.450          | 2.5            | 2.550          | V             |
|   | <b><math>4.5 \text{ V} &lt; V_{IN} &lt; 26 \text{ V}</math></b> , $1.0 \text{ mA} \leq I_{OUT} \leq 400 \text{ mA}$  | 2.425          | 2.5            | 2.575          | V             |
| Output Voltage for 3.3 V Option ( $V_O$ )                                       | $7.3 \text{ V} < V_{IN} < 16 \text{ V}$ , $1.0 \text{ mA} \leq I_{OUT} \leq 400 \text{ mA}$  | 3.234          | 3.3            | 3.366          | V             |
|   | <b><math>4.5 \text{ V} &lt; V_{IN} &lt; 26 \text{ V}</math></b> , $1.0 \text{ mA} \leq I_{OUT} \leq 400 \text{ mA}$  | 3.201          | 3.3            | 3.399          | V             |
| Output Voltage for 5.0 V Option ( $V_O$ )                                       | $9.0 \text{ V} < V_{IN} < 16 \text{ V}$ , $1.0 \text{ mA} \leq I_{OUT} \leq 400 \text{ mA}$  | 4.90           | 5.0            | 5.10           | V             |
|   | <b><math>6.0 \text{ V} &lt; V_{IN} &lt; 26 \text{ V}</math></b> , $1.0 \text{ mA} \leq I_{OUT} \leq 400 \text{ mA}$  | 4.85           | 5.0            | 5.15           | V             |
| Output Voltage for Adjustable Option ( $V_O$ )                                  | $V_{OUT} = V_{ADJ}$ (Unity Gain)   |                |                |                |               |
|   | $6.5 \text{ V} < V_{IN} < 16 \text{ V}$ , $1.0 \text{ mA} < I_{OUT} < 400 \text{ mA}$<br><b><math>4.5 \text{ V} &lt; V_{IN} &lt; 26 \text{ V}</math></b> , $1.0 \text{ mA} < I_{OUT} < 400 \text{ mA}$ | 1.274<br>1.261 | 1.300<br>1.300 | 1.326<br>1.339 | V<br>V        |
| Dropout Voltage ( $V_{IN} - V_{OUT}$ )<br>(5.0 V and Adj. > 5.0 V Options Only) | $I_{OUT} = 400 \text{ mA}$   | -              | 400            | 600            | mV            |
|   | $I_{OUT} = 1.0 \text{ mA}$   | -              | 30             | 150            | mV            |
| Load Regulation   | $V_{IN} = 14 \text{ V}$ , $5.0 \text{ mA} \leq I_{OUT} \leq 400 \text{ mA}$  | -30            | 5.0            | 30             | mV            |
| Line Regulation (2.5 V, 3.3 V, and Adjustable Options)                          | $4.5 \text{ V} < V_{IN} < 26 \text{ V}$ , $I_{OUT} = 1.0 \text{ mA}$   | -              | 5.0            | 25             | mV            |
| Line Regulation (5.0 V Option)  | $6.0 \text{ V} < V_{IN} < 26 \text{ V}$ , $I_{OUT} = 1.0 \text{ mA}$   | -              | 5.0            | 25             | mV            |
| Quiescent Current, ( $I_Q$ ) Active Mode  | $I_{OUT} = 100 \mu\text{A}$ , $V_{IN} = 12 \text{ V}$  | -              | 200            | 350            | $\mu\text{A}$ |
|   | $I_{OUT} = 75 \text{ mA}$ , $V_{IN} = 14 \text{ V}$  | -              | 2.5            | 5.0            | mA            |
|   | $I_{OUT} \leq 400 \text{ mA}$ , $V_{IN} = 14 \text{ V}$  | -              | 25             | 45             | mA            |
| Quiescent Current, ( $I_Q$ ) Sleep Mode   | ENABLE = 0 V, $V_{IN} = 12 \text{ V}$ , $-40^\circ\text{C} \leq T_J \leq 125^\circ\text{C}$  | -              | -              | 1.0            | $\mu\text{A}$ |
| Current Limit   | -  | 425            | 800            | -              | mA            |
| Short Circuit Output Current  | $V_{OUT} = 0 \text{ V}$  | 100            | 500            | -              | mA            |
| Thermal Shutdown  | (Guaranteed by Design)   | 150            | 180            | -              | °C            |

- Voltage range specified in the Output Stage of the Electrical Characteristics in boldface type.

## NCV8505 Series

**ELECTRICAL CHARACTERISTICS (continued)** ( $I_{OUT} = 1.0 \text{ mA}$ ,  $ENABLE = 5.0 \text{ V}$ ,  $-40^{\circ}\text{C} \leq T_J \leq 150^{\circ}\text{C}$ ;  $V_{IN}$  = dependent on voltage option (Note 4); unless otherwise specified.)

| Characteristic   | Test Conditions   | Min                | Typ         | Max                        | Unit          |
|--|---|--------------------|-------------|----------------------------|---------------|
| <b>Reset Function (RESET)</b>  |   |                    |             |                            |               |
| RESET Threshold for 2.5 V Option<br>HIGH ( $V_{RH}$ )<br>LOW ( $V_{RL}$ )<br>Hysteresis      | $V_{IN} = 4.5 \text{ V}$ (Note 5) (Note 6)<br>$V_{OUT}$ Increasing<br>$V_{OUT}$ Decreasing                            | 2.35<br>2.30<br>25 | –<br>–<br>– | $1.0 \times V_O$<br>–<br>– | V<br>V<br>mV  |
| RESET Threshold for 3.3 V Option<br>HIGH ( $V_{RH}$ )<br>LOW ( $V_{RL}$ )<br>Hysteresis      | $V_{IN} = 4.5 \text{ V}$ (Note 5) (Note 6)<br>$V_{OUT}$ Increasing<br>$V_{OUT}$ Decreasing                            | 3.10<br>3.00<br>35 | –<br>–<br>– | $1.0 \times V_O$<br>–<br>– | V<br>V<br>mV  |
| RESET Threshold for 5.0 V Option<br>HIGH ( $V_{RH}$ )<br>LOW ( $V_{RL}$ )<br>Hysteresis      | $V_{IN} = 6.0 \text{ V}$ (Note 6)<br>$V_{OUT}$ Increasing<br>$V_{OUT}$ Decreasing                                     | 4.70<br>4.60<br>50 | –<br>–<br>– | $1.0 \times V_O$<br>–<br>– | V<br>V<br>mV  |
| RESET Threshold for Adjustable Option<br>HIGH ( $V_{RH}$ )<br>LOW ( $V_{RL}$ )<br>Hysteresis | $V_{IN} = 4.5 \text{ V}$ (Note 5) (Note 6)<br>$V_{OUT}$ Increasing<br>$V_{OUT}$ Decreasing                            | 1.22<br>1.19<br>10 | –<br>–<br>– | $1.0 \times V_O$<br>–<br>– | V<br>V<br>mV  |
| RESET Output Voltage<br>Low ( $V_{RLO}$ )  | $V_{IN} = \text{Minimum}$ (Note 6) (Note 7)<br>$1.0 \text{ V} \leq V_{OUT} \leq V_{RL}$ , $R_{RESET} = 5.1 \text{ k}$ | –                  | 0.1         | 0.4                        | V             |
| DELAY Switching Threshold ( $V_{DT}$ )<br>(2.5 V, 3.3 V, and 5.0 V Options)                  | $V_{IN} = \text{Minimum}$ (Note 6) (Note 7)   | 1.4                | 1.8         | 2.2                        | V             |
| DELAY Switching Threshold ( $V_{DT}$ )<br>(Adjustable Option)                                | $V_{IN} = \text{Minimum}$ (Note 6) (Note 7)   | 1.0                | 1.3         | 1.6                        | V             |
| DELAY Low Voltage  | $V_{IN} = \text{Minimum}$ (Note 6) (Note 7)<br>$V_{OUT} < \text{RESET Threshold Low}(\text{min})$                     | –                  | –           | 0.2                        | V             |
| DELAY Charge Current   | $V_{IN} = \text{Minimum}$ (Note 6) (Note 7)<br>DELAY = 1.0 V, $V_{OUT} > V_{RH}$                                      | 2.5                | 4.0         | 5.5                        | $\mu\text{A}$ |
| DELAY Discharge Current  | $V_{IN} = \text{Minimum}$ (Note 6) (Note 7)<br>DELAY = 1.0 V, $V_{OUT} < V_{RL}$                                      | 5.0                | –           | –                          | mA            |

### Voltage Adjust (Adjustable Output only)

|               |  |      |   |     |               |
|---------------|--|------|---|-----|---------------|
| Input Current | $V_{ADJ} = 1.25 \text{ V}$ , $V_{IN} = \text{Minimum}$ (Note 6) (Note 7) | –0.5 | – | 0.5 | $\mu\text{A}$ |
|---------------|--|------|---|-----|---------------|

### ENABLE

|                 |   |          |        |          |               |
|-----------------|---|----------|--------|----------|---------------|
| Input Threshold | Low, $V_{IN} = 14 \text{ V}$ (Note 6)<br>High, $V_{IN} = 14 \text{ V}$ (Note 6) | –<br>2.0 | –<br>– | 1.0<br>– | V<br>V        |
| Input Current   | ENABLE = 5.0 V, $V_{IN} = 14 \text{ V}$ (Note 6)                                | –        | 30     | 75       | $\mu\text{A}$ |

4. Voltage range specified in the Output Stage of the Electrical Characteristics in boldface type.

5. For  $V_{IN} \leq 4.5 \text{ V}$ , a RESET = Low may occur with the output in regulation.

6. Part is guaranteed by design to meet specification over the entire  $V_{IN}$  voltage range, but is production tested only at the specified  $V_{IN}$  voltage.

7. Minimum  $V_{IN} = 4.5 \text{ V}$  for 2.5 V, 3.3 V, and Adjustable options. Minimum  $V_{IN} = 6.0 \text{ V}$  for 5.0 V option.

## NCV8505 Series

### PACKAGE PIN DESCRIPTION, ADJUSTABLE OUTPUT

| Pin Number | Pin Symbol                | Function   |
|------------|---------------------------|--|
| 1          | DELAY                     | Timing capacitor for $\overline{\text{RESET}}$ function.                                       |
| 2          | ENABLE                    | ENABLE control for the IC. A high powers the device up.  |
| 3          | $\overline{\text{RESET}}$ | Active reset (accurate to $V_{\text{OUT}} \geq 1.0 \text{ V}$ )                                |
| 4          | GND                       | Ground. All GND leads must be connected to Ground.   |
| 5          | $V_{\text{ADJ}}$          | Voltage Adjust. A resistor divider from $V_{\text{OUT}}$ to this lead sets the output voltage. |
| 6          | $V_{\text{OUT}}$          | $\pm 2.0\%$ , 400 mA output.   |
| 7          | $V_{\text{IN}}$           | Input Voltage.   |

### PACKAGE PIN DESCRIPTION, FIXED OUTPUT

| Pin Number | Pin Symbol                | Function   |
|------------|---------------------------|--|
| 1          | DELAY                     | Timing capacitor for $\overline{\text{RESET}}$ function.   |
| 2          | ENABLE                    | ENABLE control for the IC. A high powers the device up.  |
| 3          | $\overline{\text{RESET}}$ | Active reset (accurate to $V_{\text{OUT}} \geq 1.0 \text{ V}$ )  |
| 4          | GND                       | Ground. All GND leads must be connected to Ground.   |
| 5          | SENSE                     | Kelvin connection which allows remote sensing of output voltage for improved regulation. If remote sensing is not desired, connect to $V_{\text{OUT}}$ . |
| 6          | $V_{\text{OUT}}$          | $\pm 2.0\%$ , 400 mA output.   |
| 7          | $V_{\text{IN}}$           | Input Voltage.   |

# NCV8505 Series

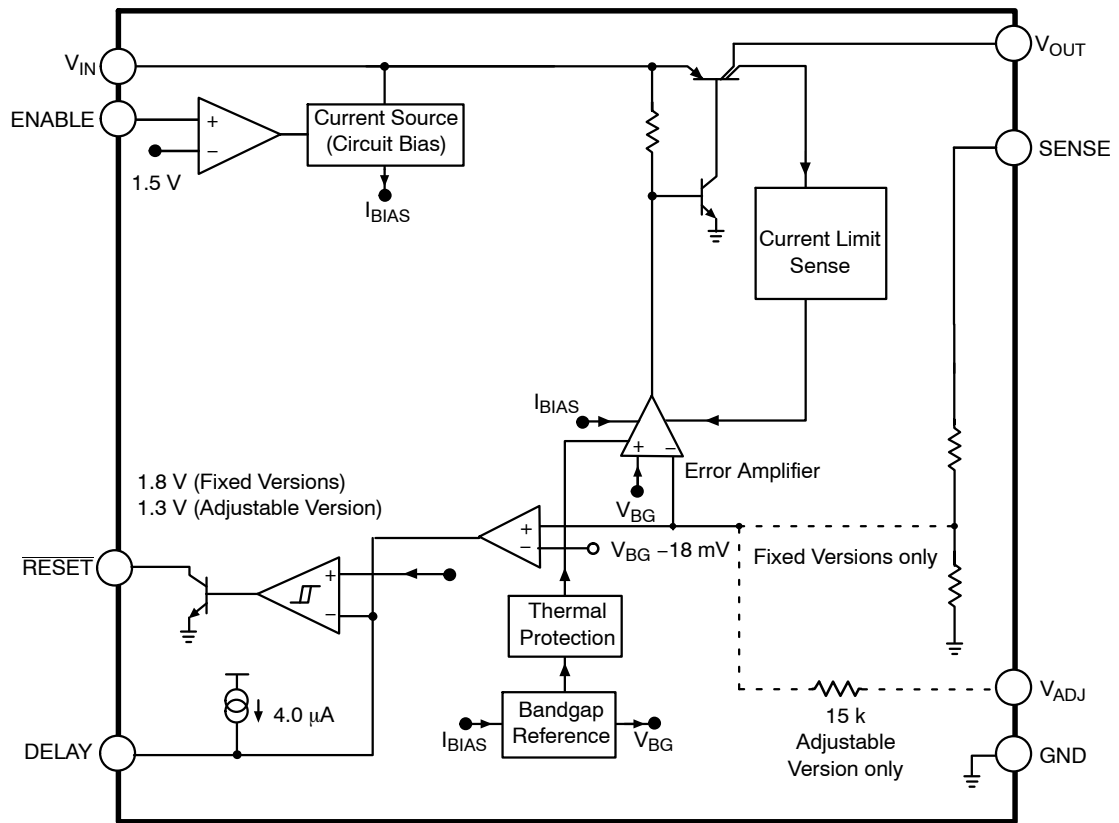


Figure 2. Block Diagram

# NCV8505 Series

## TYPICAL PERFORMANCE CHARACTERISTICS

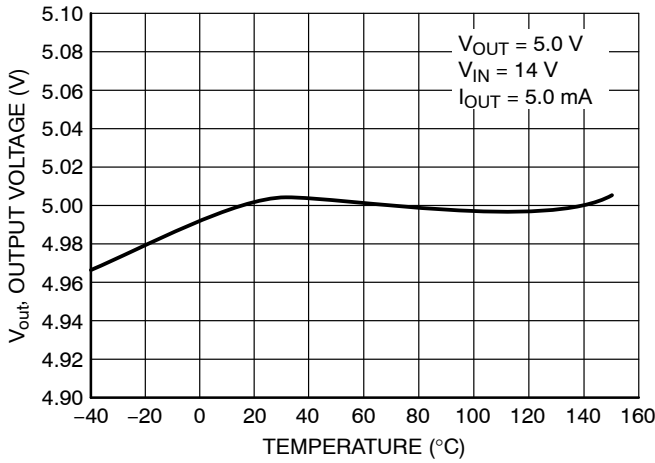


Figure 3. 5 V Output Voltage vs. Temperature

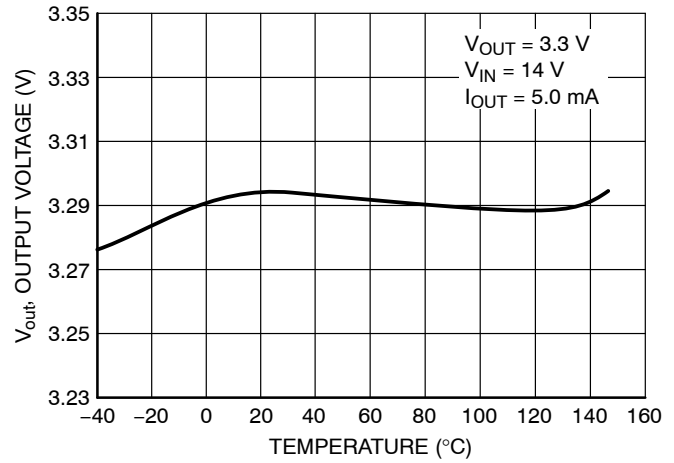


Figure 4. 3.3 V Output Voltage vs. Temperature

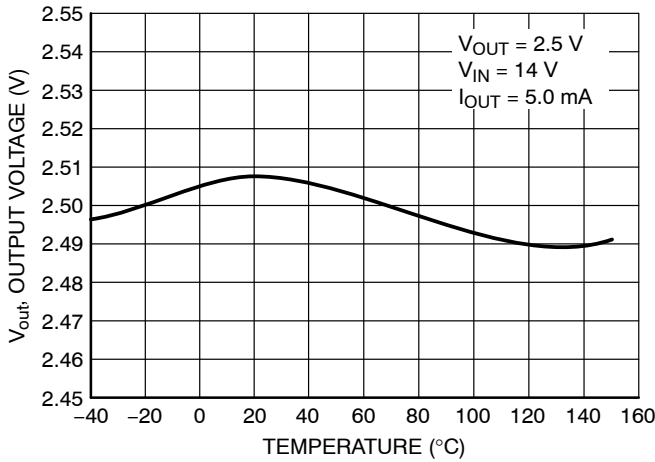


Figure 5. 2.5 V Output Voltage vs. Temperature

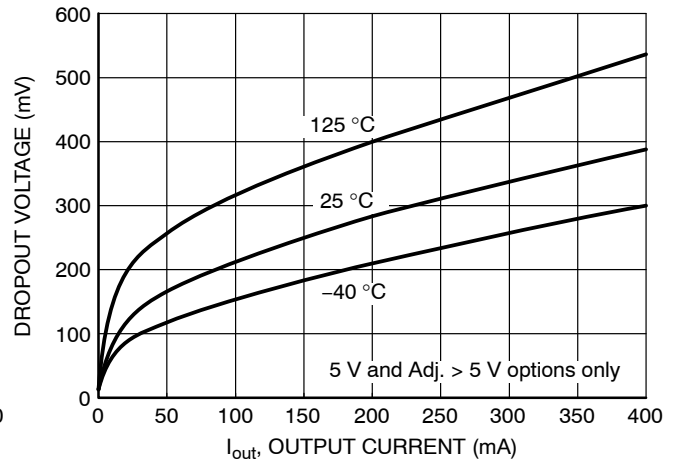


Figure 6. Dropout Voltage vs. Output Current

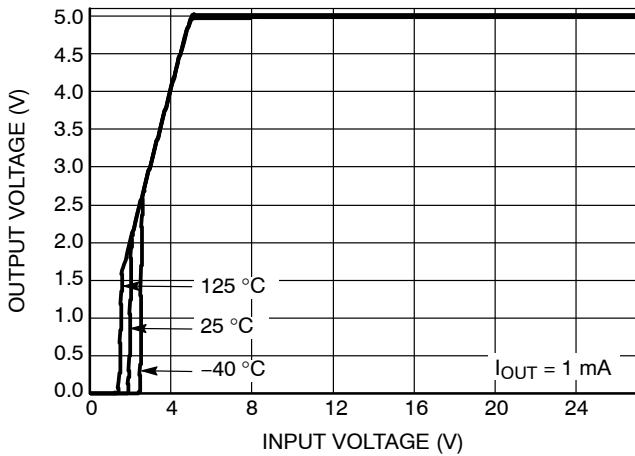


Figure 7. Output Voltage vs. Input Voltage

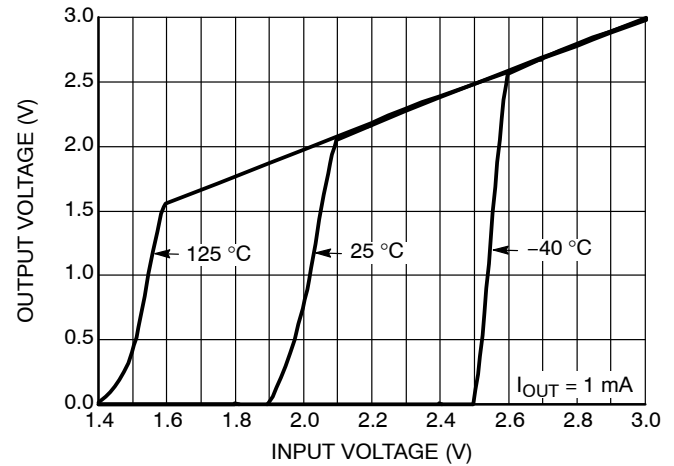


Figure 8. Output Voltage vs. Input Voltage

# NCV8505 Series

## TYPICAL PERFORMANCE CHARACTERISTICS

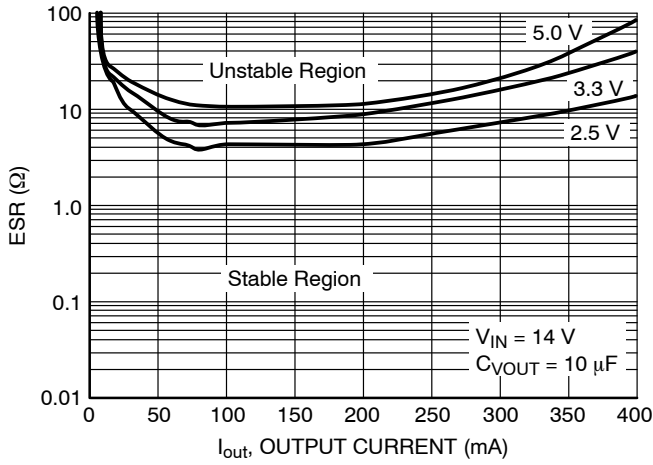


Figure 9. Output Stability with Output Voltage Change

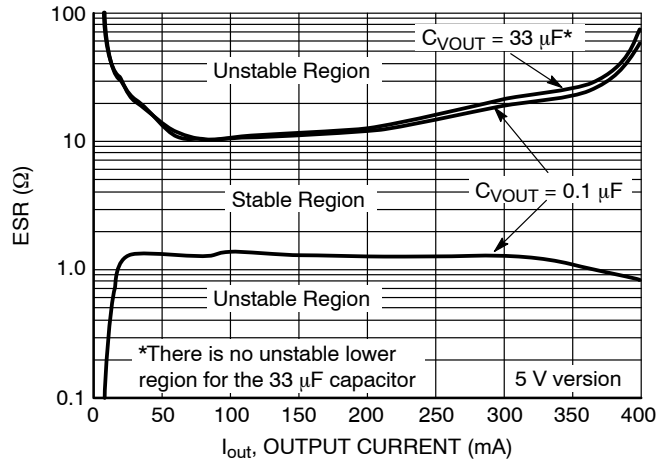


Figure 10. Output Stability with Output Capacitor Change

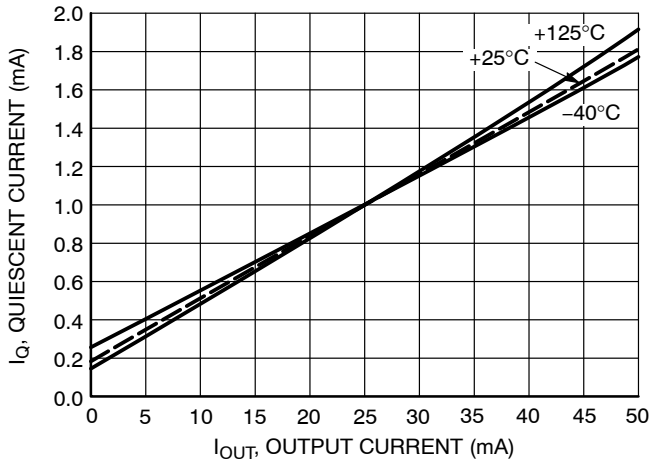


Figure 11. Quiescent Current vs. Output Current

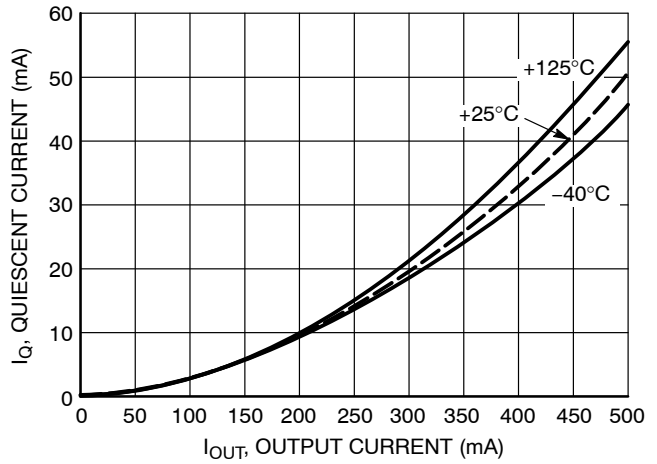


Figure 12. Quiescent Current vs. Output Current

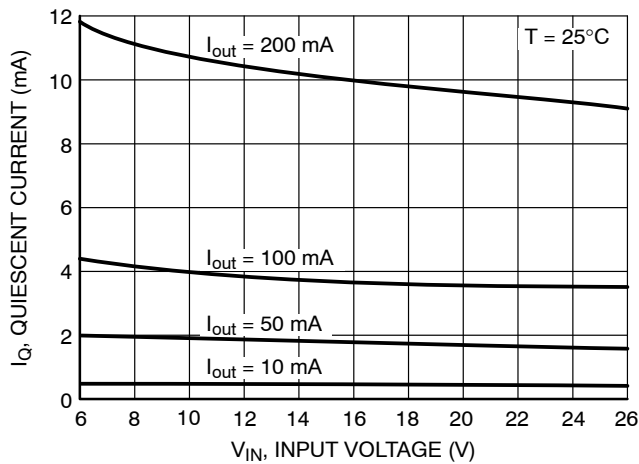


Figure 13. Quiescent Current vs. Input Voltage

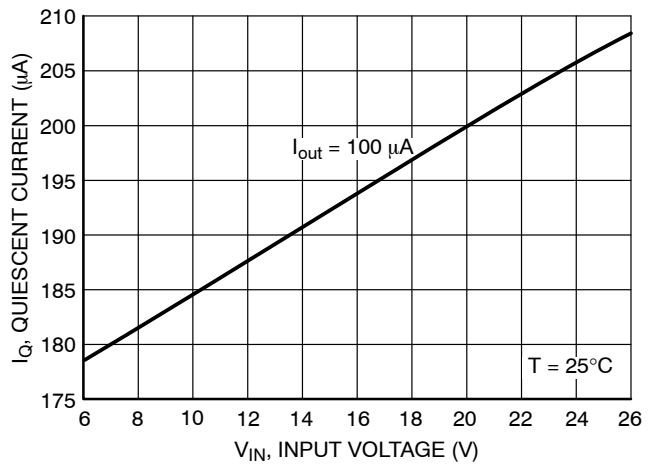


Figure 14. Quiescent Current vs. Input Voltage

CIRCUIT DESCRIPTION

REGULATOR CONTROL FUNCTIONS

The NCV8505 contains the microprocessor compatible control function  $\overline{\text{RESET}}$  (Figure 15).

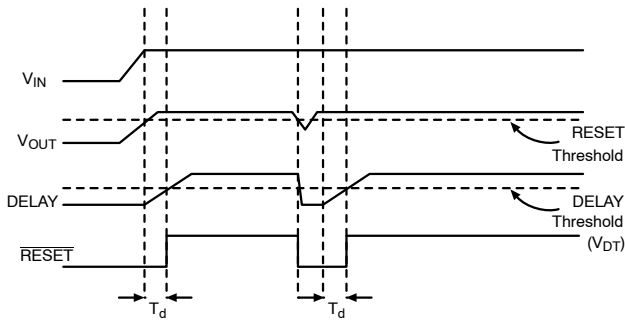


Figure 15. Reset and Delay Circuit Wave Forms

RESET Function

A  $\overline{\text{RESET}}$  signal (low voltage) is generated as the IC powers up until  $V_{\text{OUT}}$  is within 1.5% of the regulated output voltage, or when  $V_{\text{OUT}}$  drops out of regulation, and is lower than 4.0% below the regulated output voltage. Hysteresis is included in the function to minimize oscillations.

The  $\overline{\text{RESET}}$  output is an open collector NPN transistor, controlled by a low voltage detection circuit. The circuit is functionally independent of the rest of the IC thereby guaranteeing that the  $\overline{\text{RESET}}$  signal is valid for  $V_{\text{OUT}}$  as low as 1.0 V.

ENABLE Function

The part stays in a low  $I_Q$  sleep mode when the ENABLE pin is held low. The part has an internal pull down if the pin is left floating.

The integrity of the ENABLE pin allows it to be tied to the battery line through an external resistor. It will withstand load dump potentials in this configuration.

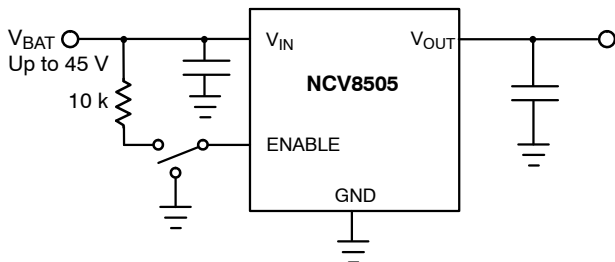


Figure 16. ENABLE Function

DELAY Function

The reset delay circuit provides a programmable (by external capacitor) delay on the  $\overline{\text{RESET}}$  output lead.

The DELAY lead provides source current (typically 4.0  $\mu\text{A}$ ) to the external DELAY capacitor during the following proceedings:

1. During Power Up (once the regulation threshold has been verified).
2. After a reset event has occurred and the device is back in regulation. The DELAY capacitor is discharged when the regulation ( $\overline{\text{RESET}}$  threshold) has been violated. This is a latched incident. The capacitor will fully discharge and wait for the device to regulate before going through the delay time event again.

Voltage Adjust

Figure 17 shows the device setup for a user configurable output voltage. The feedback to the  $V_{\text{ADJ}}$  pin is taken from a voltage divider referenced to the output voltage. The loop is balanced around the Unity Gain threshold (1.30 V typical).

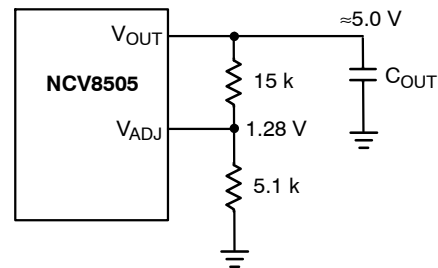


Figure 17. Adjustable Output Voltage

## APPLICATION NOTES

### SETTING THE DELAY TIME

The delay time is controlled by the Reset Delay Low Voltage, Delay Switching Threshold, and the Delay Charge Current. The delay follows the equation:

$$t_{\text{DELAY}} = \frac{C_{\text{DELAY}}(V_{\text{dt}} - \text{Reset Delay Low Voltage})}{\text{Delay Charge Current}}$$

Example:

Using  $C_{\text{DELAY}} = 33 \text{ nF}$ .

Assume reset Delay Low Voltage = 0.

Use the typical value for  $V_{\text{dt}} = 1.8 \text{ V}$  (2.5 V, 3.3 V, and 5.0 V options).

Use the typical value for Delay Charge Current =  $4.2 \text{ }\mu\text{A}$ .

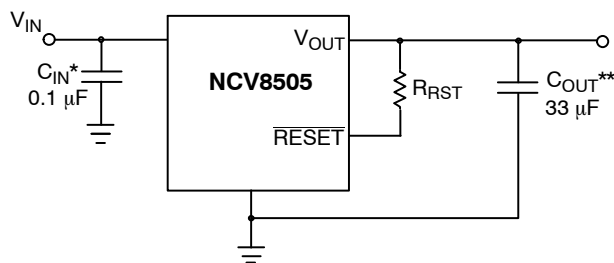
$$t_{\text{DELAY}} = \frac{[33 \text{ nF}(1.8 - 0)]}{4.2 \text{ }\mu\text{A}} = 14 \text{ ms}$$

### STABILITY CONSIDERATIONS

The output or compensation capacitor helps determine three main characteristics of a linear regulator: start-up delay, load transient response and loop stability.

The capacitor value and type should be based on cost, availability, size and temperature constraints. A tantalum or aluminum electrolytic capacitor is best, since a film or ceramic capacitor with almost zero ESR can cause instability. The aluminum electrolytic capacitor is the least expensive solution, but, if the circuit operates at low temperatures ( $-25^{\circ}\text{C}$  to  $-40^{\circ}\text{C}$ ), both the value and ESR of the capacitor will vary considerably. The capacitor manufacturers data sheet usually provides this information.

The value for the output capacitor  $C_{\text{OUT}}$  shown in Figure 18 should work for most applications, however it is not necessarily the optimized solution.



\* $C_{\text{IN}}$  required if regulator is located far from the power supply filter.

\*\* $C_{\text{OUT}}$  required for stability. Capacitor must operate at minimum temperature expected.

**Figure 18. Test and Application Circuit Showing Output Compensation**

### CALCULATING POWER DISSIPATION IN A SINGLE OUTPUT LINEAR REGULATOR

The maximum power dissipation for a single output regulator (Figure 19) is:

$$P_{\text{D(max)}} = [V_{\text{IN(max)}} - V_{\text{OUT(min)}}]I_{\text{OUT(max)}} + V_{\text{IN(max)}}I_{\text{Q}} \quad (1)$$

where:

$V_{\text{IN(max)}}$  is the maximum input voltage,

$V_{\text{OUT(min)}}$  is the minimum output voltage,

$I_{\text{OUT(max)}}$  is the maximum output current for the application, and

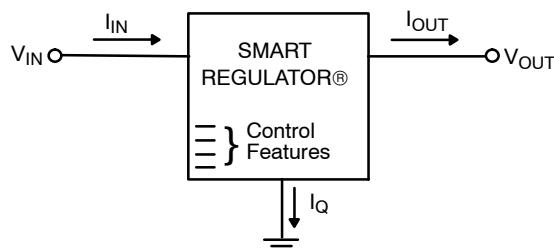
$I_{\text{Q}}$  is the quiescent current the regulator consumes at  $I_{\text{OUT(max)}}$ .

Once the value of  $P_{\text{D(max)}}$  is known, the maximum permissible value of  $R_{\theta\text{JA}}$  can be calculated:

$$R_{\theta\text{JA}} = \frac{150^{\circ}\text{C} - T_{\text{A}}}{P_{\text{D}}} \quad (2)$$

The value of  $R_{\theta\text{JA}}$  can then be compared with those in the package section of the data sheet. Those packages with  $R_{\theta\text{JA}}$ 's less than the calculated value in equation 2 will keep the die temperature below  $150^{\circ}\text{C}$ .

In some cases, none of the packages will be sufficient to dissipate the heat generated by the IC, and an external heatsink will be required.



**Figure 19. Single Output Regulator with Key Performance Parameters Labeled**

### HEAT SINKS

A heat sink effectively increases the surface area of the package to improve the flow of heat away from the IC and into the surrounding air.

Each material in the heat flow path between the IC and the outside environment will have a thermal resistance. Like series electrical resistances, these resistances are summed to determine the value of  $R_{\theta\text{JA}}$ :

$$R_{\theta\text{JA}} = R_{\theta\text{JC}} + R_{\theta\text{CS}} + R_{\theta\text{SA}} \quad (3)$$

where:

$R_{\theta\text{JC}}$  = the junction-to-case thermal resistance,

$R_{\theta\text{CS}}$  = the case-to-heatsink thermal resistance, and

$R_{\theta\text{SA}}$  = the heatsink-to-ambient thermal resistance.

$R_{\theta\text{JC}}$  appears in the package section of the data sheet. Like  $R_{\theta\text{JA}}$ , it too is a function of package type.  $R_{\theta\text{CS}}$  and  $R_{\theta\text{SA}}$  are functions of the package type, heatsink and the interface between them. These values appear in heat sink data sheets of heat sink manufacturers.

## NCV8505 Series

### ORDERING INFORMATION

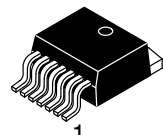
| Device           | Output Voltage | Package                           | Shipping†       |
|------------------|----------------|-----------------------------------|-----------------|
| NCV8505D2TADJG   | Adjustable     | D <sup>2</sup> PAK-7<br>(Pb-Free) | 50 Units / Rail |
| NCV8505D2TADJR4G |                | D <sup>2</sup> PAK-7<br>(Pb-Free) | 750 Tape & Reel |
| NCV8505D2T25G    | 2.5 V          | D <sup>2</sup> PAK-7<br>(Pb-Free) | 50 Units / Rail |
| NCV8505D2T25R4G  |                | D <sup>2</sup> PAK-7<br>(Pb-Free) | 750 Tape & Reel |
| NCV8505D2T33G    | 3.3 V          | D <sup>2</sup> PAK-7<br>(Pb-Free) | 50 Units / Rail |
| NCV8505D2T33R4G  |                | D <sup>2</sup> PAK-7<br>(Pb-Free) | 750 Tape & Reel |
| NCV8505D2T50G    | 5.0 V          | D <sup>2</sup> PAK-7<br>(Pb-Free) | 50 Units / Rail |
| NCV8505D2T50R4G  |                | D <sup>2</sup> PAK-7<br>(Pb-Free) | 750 Tape & Reel |

†For information on tape and reel specifications, including part orientation and tape sizes, please refer to our Tape and Reel Packaging Specifications Brochure, BRD8011/D.

# MECHANICAL CASE OUTLINE

## PACKAGE DIMENSIONS

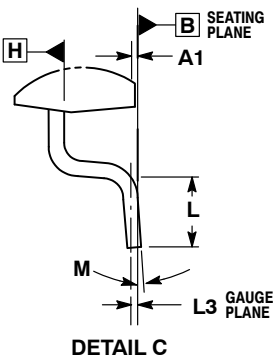
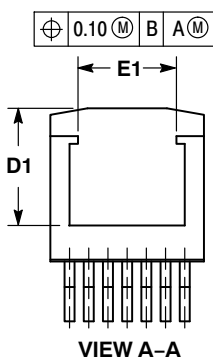
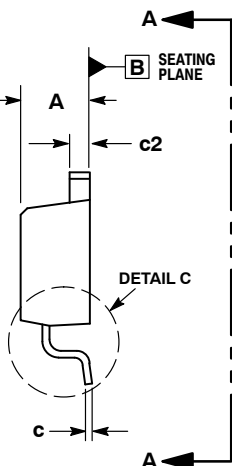
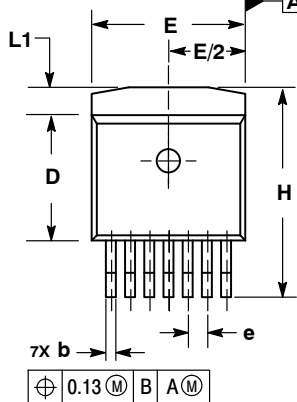
ON Semiconductor®



### D<sup>2</sup>PAK-7 (SHORT LEAD) CASE 936AB-01 ISSUE B

DATE 08 SEP 2009

SCALE 1:1

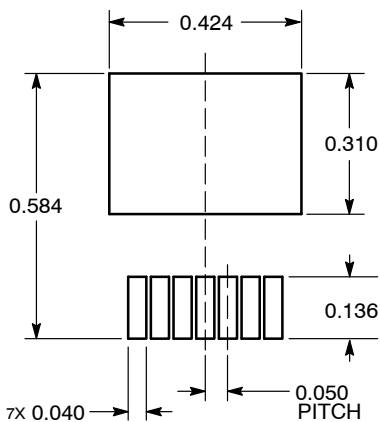


NOTES:

1. DIMENSIONING AND TOLERANCING PER ASME Y14.5M, 1994.
2. CONTROLLING DIMENSION: INCHES.
3. DIMENSIONS D AND E DO NOT INCLUDE MOLD FLASH AND GATE PROTRUSIONS. MOLD FLASH AND GATE PROTRUSIONS NOT TO EXCEED 0.005 MAXIMUM PER SIDE. THESE DIMENSIONS TO BE MEASURED AT DATUM H.
4. THERMAL PAD CONTOUR OPTIONAL WITHIN DIMENSIONS E, L1, D1, AND E1. DIMENSIONS D1 AND E1 ESTABLISH A MINIMUM MOUNTING SURFACE FOR THE THERMAL PAD.

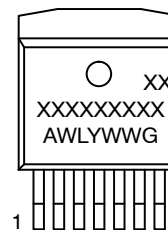
| DIM | INCHES    |       | MILLIMETERS |       |
|-----|-----------|-------|-------------|-------|
|     | MIN       | MAX   | MIN         | MAX   |
| A   | 0.170     | 0.180 | 4.32        | 4.57  |
| A1  | 0.000     | 0.010 | 0.00        | 0.25  |
| b   | 0.026     | 0.036 | 0.66        | 0.91  |
| c   | 0.017     | 0.026 | 0.43        | 0.66  |
| c2  | 0.045     | 0.055 | 1.14        | 1.40  |
| D   | 0.325     | 0.368 | 8.25        | 9.53  |
| D1  | 0.270     | ---   | 6.86        | ---   |
| E   | 0.380     | 0.420 | 9.65        | 10.67 |
| E1  | 0.245     | ---   | 6.22        | ---   |
| e   | 0.050 BSC |       | 1.27 BSC    |       |
| H   | 0.539     | 0.579 | 13.69       | 14.71 |
| L   | 0.058     | 0.078 | 1.47        | 1.98  |
| L1  | ---       | 0.066 | ---         | 1.68  |
| L3  | 0.010 BSC |       | 0.25 BSC    |       |
| M   | 0°        |       | 8°          |       |

#### RECOMMENDED SOLDERING FOOTPRINT\*



DIMENSIONS: MILLIMETERS

#### GENERIC MARKING DIAGRAM\*



- XXXXXX = Specific Device Code
- A = Assembly Location
- WL = Wafer Lot
- Y = Year
- WW = Work Week
- G = Pb-Free Package

\*This information is generic. Please refer to device data sheet for actual part marking. Pb-Free indicator, "G" or microdot "▪", may or may not be present.

\*For additional information on our Pb-Free strategy and soldering details, please download the ON Semiconductor Soldering and Mounting Techniques Reference Manual, SOLDERRM/D.

|                  |                                   |  |
|------------------|-----------------------------------|--|
| DOCUMENT NUMBER: | 98AON14119D                       | Electronic versions are uncontrolled except when accessed directly from the Document Repository. Printed versions are uncontrolled except when stamped "CONTROLLED COPY" in red. |
| DESCRIPTION:     | D <sup>2</sup> PAK-7 (SHORT LEAD) | PAGE 1 OF 1  |

ON Semiconductor and are trademarks of Semiconductor Components Industries, LLC dba ON Semiconductor or its subsidiaries in the United States and/or other countries. ON Semiconductor reserves the right to make changes without further notice to any products herein. ON Semiconductor makes no warranty, representation or guarantee regarding the suitability of its products for any particular purpose, nor does ON Semiconductor assume any liability arising out of the application or use of any product or circuit, and specifically disclaims any and all liability, including without limitation special, consequential or incidental damages. ON Semiconductor does not convey any license under its patent rights nor the rights of others.

**onsemi**, **Onsemi**, and other names, marks, and brands are registered and/or common law trademarks of Semiconductor Components Industries, LLC dba "**onsemi**" or its affiliates and/or subsidiaries in the United States and/or other countries. **onsemi** owns the rights to a number of patents, trademarks, copyrights, trade secrets, and other intellectual property. A listing of **onsemi**'s product/patent coverage may be accessed at [www.onsemi.com/site/pdf/Patent-Marking.pdf](http://www.onsemi.com/site/pdf/Patent-Marking.pdf). **onsemi** reserves the right to make changes at any time to any products or information herein, without notice. The information herein is provided "as-is" and **onsemi** makes no warranty, representation or guarantee regarding the accuracy of the information, product features, availability, functionality, or suitability of its products for any particular purpose, nor does **onsemi** assume any liability arising out of the application or use of any product or circuit, and specifically disclaims any and all liability, including without limitation special, consequential or incidental damages. Buyer is responsible for its products and applications using **onsemi** products, including compliance with all laws, regulations and safety requirements or standards, regardless of any support or applications information provided by **onsemi**. "Typical" parameters which may be provided in **onsemi** data sheets and/or specifications can and do vary in different applications and actual performance may vary over time. All operating parameters, including "Typicals" must be validated for each customer application by customer's technical experts. **onsemi** does not convey any license under any of its intellectual property rights nor the rights of others. **onsemi** products are not designed, intended, or authorized for use as a critical component in life support systems or any FDA Class 3 medical devices or medical devices with a same or similar classification in a foreign jurisdiction or any devices intended for implantation in the human body. Should Buyer purchase or use **onsemi** products for any such unintended or unauthorized application, Buyer shall indemnify and hold **onsemi** and its officers, employees, subsidiaries, affiliates, and distributors harmless against all claims, costs, damages, and expenses, and reasonable attorney fees arising out of, directly or indirectly, any claim of personal injury or death associated with such unintended or unauthorized use, even if such claim alleges that **onsemi** was negligent regarding the design or manufacture of the part. **onsemi** is an Equal Opportunity/Affirmative Action Employer. This literature is subject to all applicable copyright laws and is not for resale in any manner.

## ADDITIONAL INFORMATION

### TECHNICAL PUBLICATIONS:

Technical Library: [www.onsemi.com/design/resources/technical-documentation](http://www.onsemi.com/design/resources/technical-documentation)  
onsemi Website: [www.onsemi.com](http://www.onsemi.com)

### ONLINE SUPPORT: [www.onsemi.com/support](http://www.onsemi.com/support)

For additional information, please contact your local Sales Representative at [www.onsemi.com/support/sales](http://www.onsemi.com/support/sales)

## Looking for pricing, stock, or lifecycle information?

Click below to explore more details on WIN SOURCE:

- ⊖ [View NCV8505D2T33R4G on WIN SOURCE](#)
- ⊖ [ON Semiconductor Information](#)

## Optimize Your Supply Chain with WIN SOURCE Solutions

- ✓ Global Sourcing Solution
- ✓ Obsolete Management
- ✓ Cost Control Management
- ✓ Shortage Management
- ✓ Alternative Solution
- ✓ Excess Inventory Management