



THE DATASHEET OF CER0707A



Features

- Excellent Ripple
- Low Loss
- High Rejection

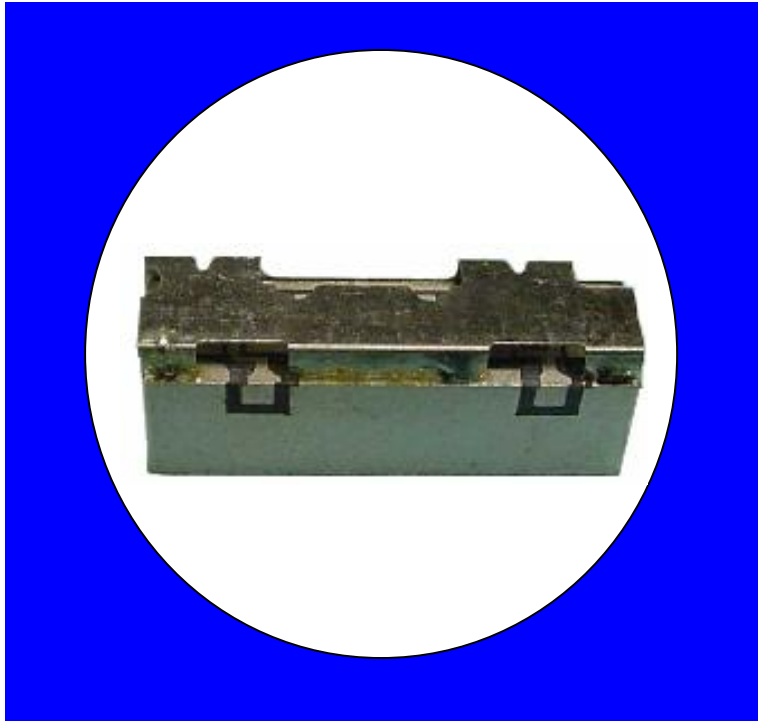
Description

Surface mount, silver (Ag) coated ceramic filter. Developed for use in 2350 MHz infrastructure applications.

Weight: tbd grams typical

Material: Filter is composed of a ceramic block coated with Ag and a shield made of nickel silver plated steel.

Filter complies with RoHS standards.



Electrical Specifications

Parameter	Frequency MHz	Typical @ 25°C	Specification @ 25°C	Spec over -40°C to +85°C
Passband Iloss	2275 - 2425	-2.00	-2.80	-3.0
Passband Ripple 1	2275 - 2425	1.0	1.4	1.5
Passband Ripple 2	2300 - 2400	0.6	0.9	1.0
Passband Return Loss @ Port 1	2275 - 2425	-11.0	-10.0	-10.0
Passband Return Loss @ Port 2	2275 - 2425	-11.0	-10.0	-10.0
Attenuation	0.1 - 2100	-40.0	-37.0	-37.0
	2100 - 2200	-37.0	-35.0	-35.0
	2500 - 2600	-37.0	-35.0	-35.0
	2600 - 3000	-47.0	-44.0	-44.0

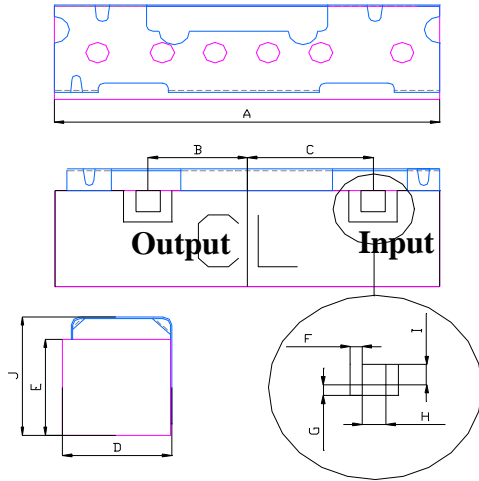
Note: Supplier shall test each filter to the critical electrical specifications of the above table. Any subsequent audits may deviate from in value due to measurement repeatability among different test systems. Such deviations shall not exceed the following limits:

Specification Allowance	
Insertion Loss	0.1 dB
Return Loss	1.0 dB
Stopbands	1.0 dB

*This product is covered by one or more of the following U.S. and foreign patents including: US 4,692,726;US 4,742,562; US 4,800,348;US 4,829,274;US 5,146,193;EP 0573597;DE 0573597;FR 0573597;JP 508149/92;KR 142171;US 5,162,760;US 5,218,329;US 5,250,916;US 5,327,109;US 5,488,335;CA 2114029;FR 9306297;GB 2273393;JP 3205337;KR 115113;CN 93106228.4;US 5,512,866;EP 0706719;DE 0706719;FR 0706719;GB 0706719;CN 95190359.4;US 5,602,518;US 5,721,520;US 5,745,018;EP 0910875;DE 0910875;DK 0910875;FR 0910875;GB 0910875;E 0910875;JP 505182/98;KR 10-323013;US 5,994,978;US 6,462,629;CN 00810420.4;US 6,559,735;US 6,650,202;US 6,834,429. Other US and foreign patents pending.

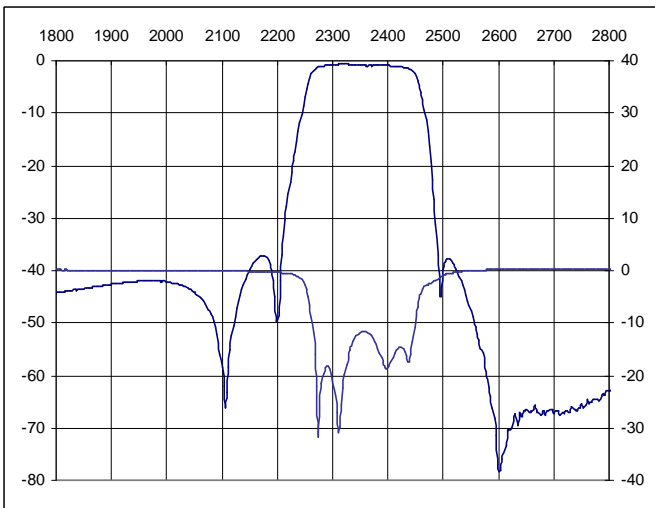
CTS Corporation 2006 reserves all copyrights in the layout, design and configuration of the patterns on this product.

Mechanical Drawing

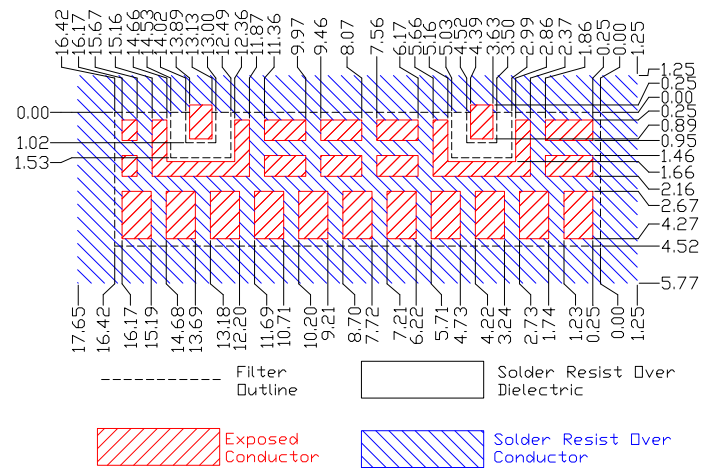


Dim	Nominal (mm)	Tolerance (mm) +/- or max
A	16.42	max
B	4.20	0.13
C	5.30	0.13
D	4.85	max
E	4.52	max
F	0.51	0.13
G	0.51	0.13
H	1.02	0.13
I	1.02	0.13
J	6.05	max

Electrical response

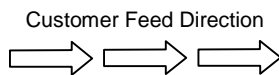


PCB Layout

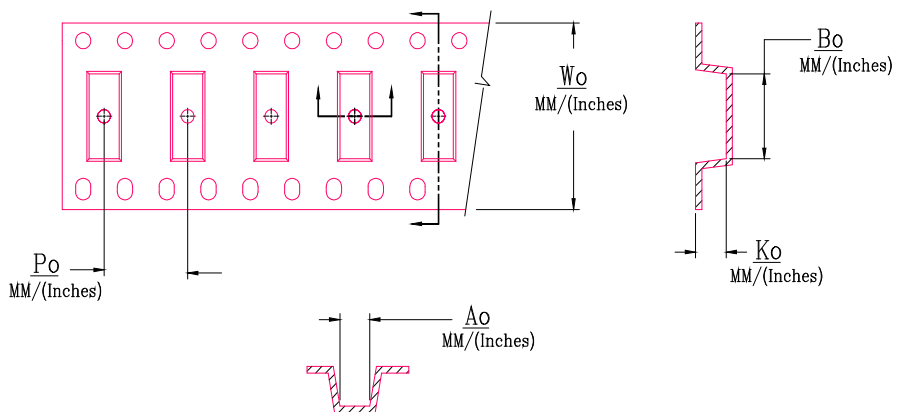
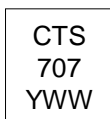


Packaging and Marking

DIMENSION	UNITS	SPECIFICATION
REEL DIAMETER	mm	330
REEL WEIGHT	kg	3.1
REEL QUANTITY	ea.	500



Product Marking



MODEL NO.	W_o	A_o	B_o	K_o	P_o
CER0171	24.0/(0.945)	6.50/(0.256)	16.7/(0.657)	5.10/(0.201)	12.0/(0.472)

Looking for pricing, stock, or lifecycle information?

Click below to explore more details on WIN SOURCE:

- ⊖ [View CER0707A on WIN SOURCE](#)
- ⊖ [Tusonix a Subsidiary of CTS Electronic Components Information](#)

Optimize Your Supply Chain with WIN SOURCE Solutions

- ✓ Global Sourcing Solution
- ✓ Obsolete Management
- ✓ Cost Control Management
- ✓ Shortage Management
- ✓ Alternative Solution
- ✓ Excess Inventory Management