



**THE DATASHEET OF**  
**1051**





## SMT & THM POLARIZED "CR2" • "CR123A" CELL HOLDERS

### FEATURES

- Battery installation and removal does not require tools.
- UL 94V-0 Heat resistant Nylon Housings well suited for reflow or wave soldering.
- Securely holds battery in place
- Polarized holder offers circuit protection against improper battery installation

### APPLICATIONS

- Computer memory, power backup systems
- Telecommunications/Security Systems
- PLC and industrial controls

### SPECIFICATIONS

**Base:** High Temp Nylon 46, UL Rated 94V-0

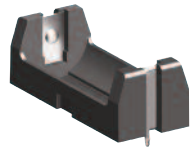
**Contacts:** .012 (.30) Stainless Steel, Gold Plate (Flash) - SMT

**Contacts:** .012 (.30) Stainless Steel, Tin-Nickel Plate - THM

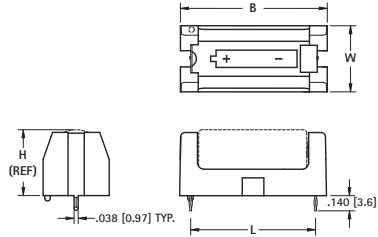
**Operating temp range:** -60°F to 290°F (-50°C to 145°C)

THM

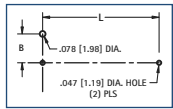
SMT



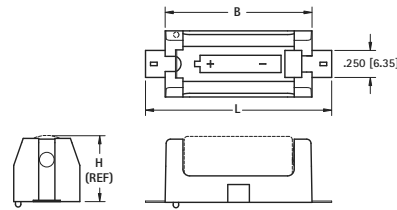
Thru-Hole Mount (THM)



Mounting Detail

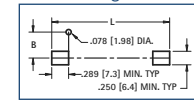


1018C  
RETAINER  
COVER  
FITS ALL  
HOLDERS



Surface Mount (SMT)

Mounting Detail

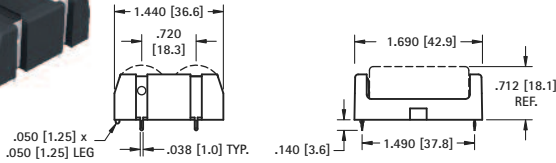


CAT. NO.	MOUNTING STYLE	L	W	H (Ref)	B	G	CELL SIZE	PACKAGING SPEC'S
1010	SMT	1.723 (43.8)	.612 (15.5)	.661 (16.8)	1.360 (34.5)	.265 (6.7)	CR2	50 pieces per tray
1011	THM	1.156 (29.4)	.612 (15.5)	.661 (16.8)	1.360 (34.5)	.265 (6.7)	CR2	
1050	SMT	2.062 (52.4)	.720 (18.3)	.712 (18.1)	1.690 (42.9)	.319 (8.1)	CR123A	
1051	THM	1.487 (37.8)	.720 (18.3)	.712 (18.1)	1.690 (42.9)	.319 (8.1)	CR123A	

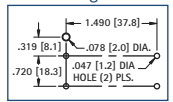
## SMT & THM DUAL POLARIZED CR123A CELL HOLDER

THM

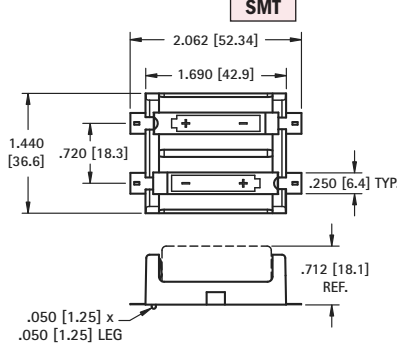
SMT



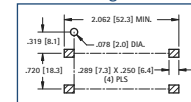
Mounting Detail



CAT. NO. 1079



Mounting Detail



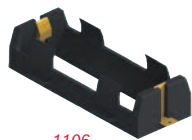
CAT. NO. 1080

Packaging Spec's: 25 pieces per tray

## SMT & INLINE "26650" LITHIUM-ION HOLDERS

SINGLE

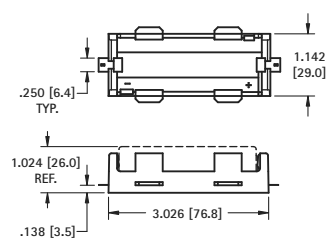
DUAL



1106  
SMT



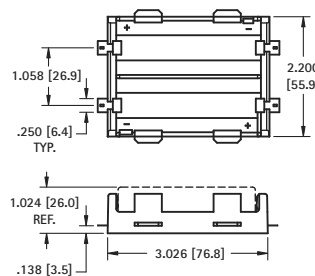
1107  
Solder Lugs



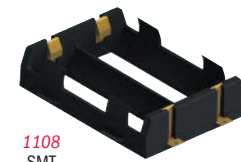
DWG. 1 SMT version shown



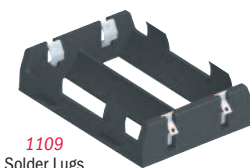
• Thru board design saves on total product height.



DWG. 2 SMT version shown



1108  
SMT



1109  
Solder Lugs

### SPECIFICATIONS

**SMT Base:** High Temperature Nylon 4/6, UL Rated 94V-0

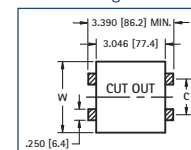
**SMT Contacts:** .012 (.03) Stainless Steel, Gold Plate (Flash)

**Inline Base:** PBT, UL Rated 94V-0

**Inline Solder Lugs:** .012 (.3) Stainless Steel, Nickel Plate



CAT. NO.	MTG.	FIG. NO.	HOLDS NO. OF CELLS	SMT MOUNTING PAD LAYOUT	
				W	C
1107	Solder Lugs	1	1	-	-
1109		2	2	-	-
1106	SMT	1	1	1.142 (29.0)	On Center
1108		2	2	2.200 (55.9)	1.058 (26.9)

Mounting Detail









## Looking for pricing, stock, or lifecycle information?

Click below to explore more details on WIN SOURCE:

-  [View 1051 on WIN SOURCE](#)
-  [Keystone Electronics Information](#)

## Optimize Your Supply Chain with WIN SOURCE Solutions

-  Global Sourcing Solution
-  Obsolete Management
-  Cost Control Management
-  Shortage Management
-  Alternative Solution
-  Excess Inventory Management