



**THE DATASHEET OF
CF4320HZKFR**



CompactFlash™ BUS-INTERFACE CHIP

WITH ±15-kV ESD PROTECTION, TRANSLATION, AND CARD-DETECT CIRCUITRY

Check for Samples: [CF4320H](#)

FEATURES

- **±15-kV Human-Body Model (HBM) ESD Protection on Card Side**
- **Logic-Level Translation Between 1.8-V, 2.5-V, 3.3-V, and 5-V Supplies**
- **Integrated Card-Detect Circuitry**
- **Integrated Pullup/Pulldown Resistors Save Board Space and Cost**
- **Matched Pinout With CompactFlash™ (CF) Connector Pin Configurations to Optimize PCB Layout**
- **Input-Disable Feature Allows Floating Input Conditions**
- **I_{off} Supports Partial-Power-Down Mode Operation**
- **Offered in 114-Ball LFBGA Package for Space-Constrained Applications**
- **Latch-Up Performance Exceeds 250 mA Per JESD 17**
- **ESD Performance**
 - ±15-kV HBM
 - ±4-kV IEC61000-4-2, Contact Discharge (Latch-Up Immune)

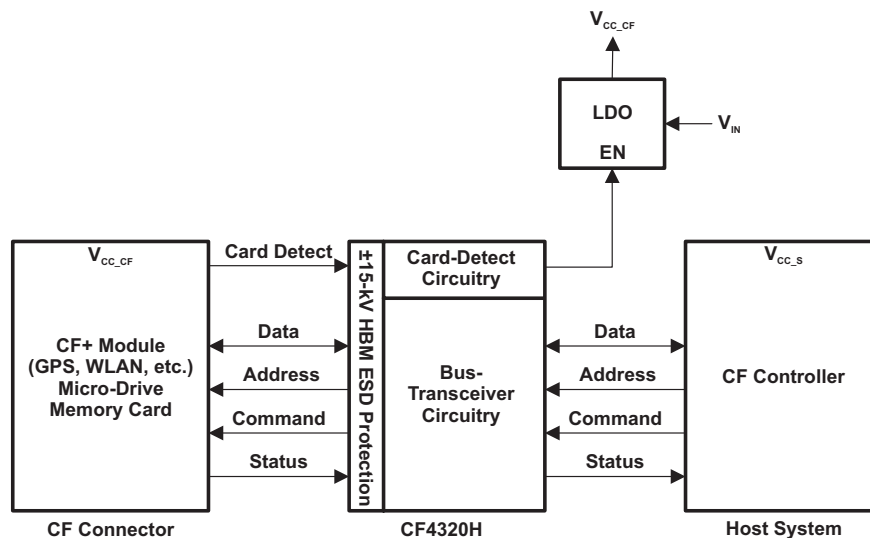
TARGET APPLICATIONS

- **GPS PDAs**
- **PDA Phones**
- **Industrial PDAs**
- **High-End Digital Cameras**

DESCRIPTION

The CF4320H is a CompactFlash™ (CF) interface device designed to provide a single-chip solution for CF card interfaces. Separate V_{CC} rails for the system-bus side and the CF connector-bus side allow voltage-level shifting. This is helpful for interfacing between a core chipset that may operate from 3.3 V down to 1.65 V, and CF cards that operate from 3.3-V or 5-V supply voltages. All the input buffers feature the input-disable function, which allows conditional floating input signals. The input, output, and I/O buffers on the CF connector side have been defined to comply with CF+ and CF specification revisions 1.4 and 2.0.

TYPICAL APPLICATION



Please be aware that an important notice concerning availability, standard warranty, and use in critical applications of Texas Instruments semiconductor products and disclaimers thereto appears at the end of this data sheet.

CompactFlash is a trademark of Sandisk Corporation.

CARD-DETECT CIRCUIT

The CF4320H has an integrated card-detect circuit that generates a LOW card-detect signal when a CF card is plugged into the socket. This circuit is supplied by a separate power-supply pin, V_{CC_SD} , which operates from 1.65 V to 5.5 V. The card-detect signal can be used to control a voltage regulator, which may power the CF slot and the CF side of the CF4320H. The inputs to this circuitry ($\overline{CD1}$ and $\overline{CD2}$) have internal pullup resistors to pull them to a HIGH logic state if there is no card in the CF slot. V_{CC_SD} is particularly helpful when the core processor operates at a low V_{CC} , but the regulator needs a higher control-signal voltage.

Table 1. CARD-DETECT SIGNALS

INPUTS		OUTPUT \overline{SCD}
$\overline{CD1}$	$\overline{CD2}$	
L	L	L
L	H	H
H	L	H
H	H	H

BUS-TRANSCEIVER CIRCUIT

Command and Status Bits

Most CF controllers are embedded in processors or microcontrollers and use GPIOs to send command signals and receive status signals from the card to manage operation. The CF interface consists of eight control signals and six status signals. The CF standard requires that each of these signals have a 100-k Ω pullup resistor. The CF4320H includes an internal 100-k Ω pullup resistor on the input of each of these signals, which saves board real estate and lowers overall system cost.

COMMAND LINE BUFFERS⁽¹⁾
($\overline{BVD1}$, $\overline{BVD2}$, \overline{INPACK} , \overline{OE} , \overline{IORD} , \overline{IOWR} ,
 \overline{READY} , \overline{REG} , $\overline{CE1}$, $\overline{CE2}$, \overline{WAIT} , \overline{WE} , \overline{WP})

INPUTS			OUTPUT
$\overline{MASTER_EN}$	$\overline{BUF_EN}$	INPUT	
L	L	H	H
L	L	L	L
L	H	X	Z, Command line buffer inputs can float.
H	X	X	Z, low-power mode

(1) X = H or L

RESET⁽¹⁾

INPUTS		OUTPUT RESET
$\overline{MASTER_EN}$	SRESET	
L	H	H
L	L	L
H	X	Z, low-power mode

(1) X = H or L

Data Bits

The CF4320H has 16 data lines organized as two groups of 8 bits each. The \overline{ENL} signal controls the lower 8 bits (D07–D00), while the \overline{ENH} signal controls the upper 8 bits (D15–D08).

**LOWER 8-BIT DATA BUS TRANSCEIVERS⁽¹⁾
(D07–D00, SD07–SD00)**

INPUTS			OPERATION
MASTER_EN	ENL	DIR (\bar{S}/CF)	
L	L	H	SD data to D bus
L	L	L	D data to SD bus
L	H	X	Isolation. D07–D00 and SD07–SD00 inputs can float.
H	X	X	Isolation, low-power mode

(1) X = H or L

**UPPER 8-BIT DATA BUS TRANSCEIVERS⁽¹⁾
(D15–D08, SD15–SD08)**

INPUTS			OPERATION
MASTER_EN	ENH	DIR (\bar{S}/CF)	
L	L	H	SD data to D bus
L	L	L	D data to SD bus
L	H	X	Isolation. D15–D08 and SD15–SD08 inputs can float.
H	X	X	Isolation, low-power mode

(1) X = H or L

Address Bits

The CF4320H has 11 unidirectional address bits flowing from the system to the CF card.

ADDRESS BUS BUFFERS⁽¹⁾

INPUTS			OUTPUT A
MASTER_EN	BUF_EN	SA	
L	L	H	H
L	L	L	L
L	H	X	Z, SA inputs can float.
H	X	X	Z, low-power mode

(1) X = H or L

Direction Signal Bit

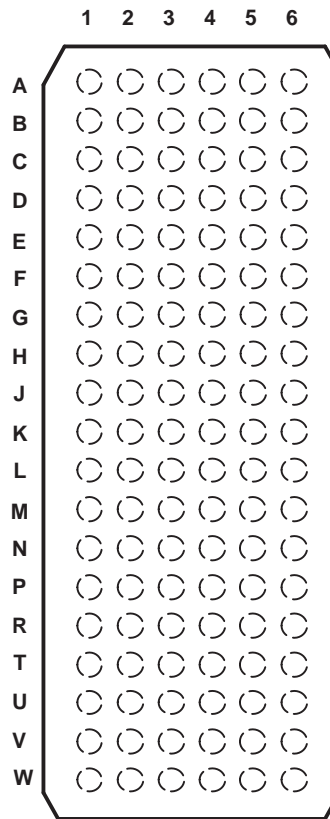
The DIR(\overline{S}/CF) input controls the data direction between the system bus and the CF card. The CF4320H has circuitry to generate a DIR_OUT signal using the \overline{SOE} and \overline{SIORD} signals. DIR(\overline{S}/CF) and DIR_OUT are placed adjacent to each other, which is convenient for connecting DIR(\overline{S}/CF) and DIR_OUT, if DIR_OUT is used. This saves an additional signal from the system controller to control the data direction. When either \overline{SOE} or \overline{SIORD} is low, the data direction is from the CF card side to the system side (DIR_OUT = L).

INPUTS				OUTPUT DIR_OUT
$\overline{BUF_EN}$	$\overline{MASTER_EN}$	\overline{SOE}	\overline{SIORD}	
L	L	L	L	L
L	L	L	H	L
L	L	H	L	L
L	L	H	H	H
H	L	X	X	L
X	H	X	X	Z, low-power mode

(1) X = H or L

BOARD-OPTIMIZED PIN CONFIGURATION

**GKF OR ZKF PACKAGE
(TOP VIEW)**



TERMINAL ASSIGNMENTS

	1	2	3	4	5	6
A	D12	D04	D03	SD14	SD12	SD11
B	D13	D05	D11	SD13	SD10	SD09
C	D14	D06	SD15	$\overline{\text{SINPACK}}$	SD08	SD07
D	D15	D07	V_{CC_CF}	V_{CC_S}	SD06	SD05
E	$\overline{\text{CE2}}$	$\overline{\text{CE1}}$	GND	GND	SD04	SD03
F	$\overline{\text{OE}}$	A10	V_{CC_CF}	V_{CC_S}	SD02	SD01
G	A09	$\overline{\text{IORD}}$	GND	GND	SD00	$\overline{\text{SCE1}}$
H	A08	$\overline{\text{IOWR}}$	V_{CC_CF}	V_{CC_S}	$\overline{\text{ENL}}$	$\overline{\text{ENH}}$
J	A07	$\overline{\text{WE}}$	GND	GND	$\overline{\text{MASTER_EN}}$	$\overline{\text{BUF_EN}}$
K	A06	READY	A05	$\overline{\text{SCE2}}$	$\overline{\text{SOE}}$	$\overline{\text{SIORD}}$
L	A04	RESET	GND	GND	$\overline{\text{SWE}}$	$\overline{\text{SIOWR}}$
M	A03	$\overline{\text{WAIT}}$	V_{CC_CF}	V_{CC_S}	SREADY	SRESET
N	A02	$\overline{\text{INPACK}}$	GND	GND	$\overline{\text{SWAIT}}$	$\overline{\text{SREG}}$
P	A01	$\overline{\text{REG}}$	V_{CC_CF}	GND	SBVD2	SBVD1
R	A00	BVD2	V_{CC_CF}	V_{CC_S}	SA10	SWP
T	D00	BVD1	V_{CC_SD}	DIR($\overline{\text{S}}$ /CF)	SA08	SA09
U	D01	D08	$\overline{\text{CD1}}$	DIR_OUT	SA06	SA07
V	D02	D09	$\overline{\text{CD2}}$	SA00	SA04	SA05
W	WP	D10	$\overline{\text{SCD}}$	SA01	SA02	SA03

TERMINAL FUNCTIONS

TERMINAL		DESCRIPTION	REFERENCED TO	I/O ⁽¹⁾
NO.	NAME			
A1	D12	Data bit 12 connected to card	V _{CC_CF}	I/O
B1	D13	Data bit 13 connected to card	V _{CC_CF}	I/O
C1	D14	Data bit 14 connected to card	V _{CC_CF}	I/O
D1	D15	Data bit 15 connected to card	V _{CC_CF}	I/O
E1	$\overline{\text{CE2}}$	Card enable connected to card	V _{CC_CF}	O
F1	$\overline{\text{OE}}$	Output enable connected to card	V _{CC_CF}	O
G1	A09	Address bit 9 connected to card	V _{CC_CF}	O
H1	A08	Address bit 8 connected to card	V _{CC_CF}	O
J1	A07	Address bit 7 connected to card	V _{CC_CF}	O
K1	A06	Address bit 6 connected to card	V _{CC_CF}	O
L1	A04	Address bit 4 connected to card	V _{CC_CF}	O
M1	A03	Address bit 3 connected to card	V _{CC_CF}	O
N1	A02	Address bit 2 connected to card	V _{CC_CF}	O
P1	A01	Address bit 1 connected to card	V _{CC_CF}	O
R1	A00	Address bit 0 connected to card	V _{CC_CF}	O
T1	D00	Data bit 0 connected to card	V _{CC_CF}	I/O
U1	D01	Data bit 1 connected to card	V _{CC_CF}	I/O
V1	D02	Data bit 2 connected to card	V _{CC_CF}	I/O
W1	WP	Write protect connected to card. Pulled up to V _{CC_CF} through 100 k Ω .	V _{CC_CF}	I
A2	D04	Data bit 4 connected to card	V _{CC_CF}	I/O
B2	D05	Data bit 5 connected to card	V _{CC_CF}	I/O
C2	D06	Data bit 6 connected to card	V _{CC_CF}	I/O
D2	D07	Data bit 7 connected to card	V _{CC_CF}	I/O
E2	$\overline{\text{CE1}}$	Card enable connected to card	V _{CC_CF}	O
F2	A10	Address bit 10 connected to card	V _{CC_CF}	O
G2	$\overline{\text{IOR\!D}}$	I/O read connected to card	V _{CC_CF}	O
H2	$\overline{\text{IOWR}}$	I/O write connected to card	V _{CC_CF}	O
J2	$\overline{\text{WE}}$	Write enable connected to card	V _{CC_CF}	O
K2	READY	Ready connected to card. Pulled up to V _{CC_CF} through 100 k Ω .	V _{CC_CF}	I
L2	RESET	Reset connected to card	V _{CC_CF}	O
M2	$\overline{\text{WAIT}}$	Wait connected to card. Pulled up to V _{CC_CF} through 100 k Ω .	V _{CC_CF}	I
N2	$\overline{\text{INPACK}}$	Input acknowledge connected to card. Pulled up to V _{CC_CF} through 100 k Ω .	V _{CC_CF}	I
P2	$\overline{\text{REG}}$	Register connected to card	V _{CC_CF}	O
R2	BVD2	BVD2 connected to card. Pulled up to V _{CC_CF} through 100 k Ω .	V _{CC_CF}	I
T2	BVD1	BVD1 connected to card. Pulled up to V _{CC_CF} through 100 k Ω .	V _{CC_CF}	I
U2	D08	Data bit 8 connected to card	V _{CC_CF}	I/O
V2	D09	Data bit 9 connected to card	V _{CC_CF}	I/O
W2	D10	Data bit 10 connected to card	V _{CC_CF}	I/O
A3	D03	Data bit 3 connected to card	V _{CC_CF}	I/O
B3	D11	Data bit 11 connected to card	V _{CC_CF}	I/O
C3	SD15	Data bit 15 connected to controller	V _{CC_S}	I/O
D3	V _{CC_CF}	Card-side supply voltage. V _{CC_CF} powers all card-side inputs, outputs, and I/Os.		Power
E3	GND	Ground		
F3	V _{CC_CF}	Card-side supply voltage. V _{CC_CF} powers all card-side inputs, outputs, and I/Os.		Power
G3	GND	Ground		

(1) I = input, O = output, I/O = input/output

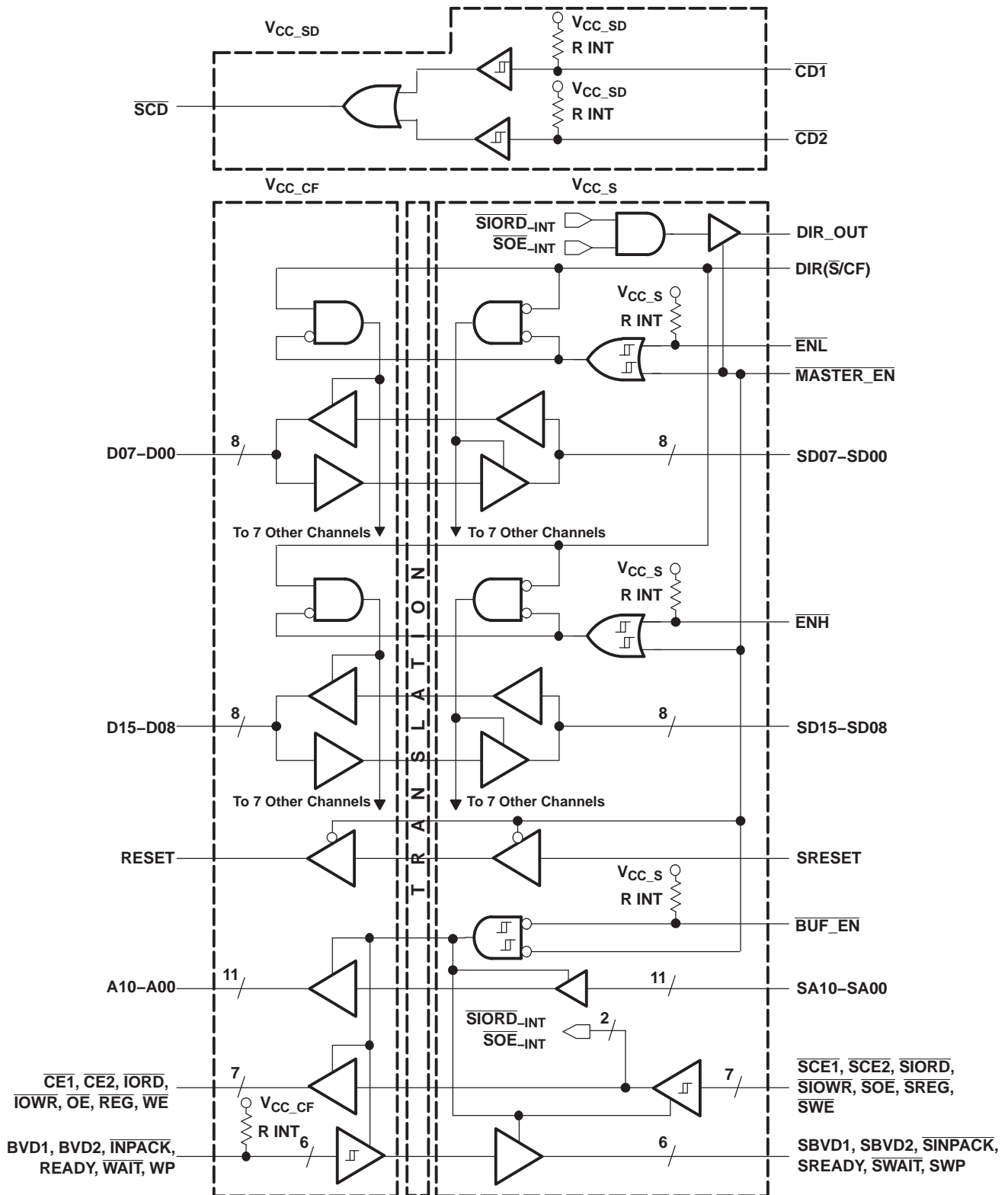
TERMINAL FUNCTIONS (continued)

TERMINAL		DESCRIPTION	REFERENCED TO	I/O ⁽¹⁾
NO.	NAME			
H3	V _{CC_CF}	Card-side supply voltage. V _{CC_CF} powers all card-side inputs, outputs, and I/Os.		Power
J3	GND	Ground		
K3	A05	Address bit 5 connected to card	V _{CC_CF}	O
L3	GND	Ground		
M3	V _{CC_CF}	Card-side supply voltage. V _{CC_CF} powers all card-side inputs, outputs, and I/Os.		Power
N3	GND	Ground		
P3	V _{CC_CF}	Card-side supply voltage. V _{CC_CF} powers all card-side inputs, outputs, and I/Os.		Power
R3	V _{CC_CF}	Card-side supply voltage. V _{CC_CF} powers all card-side inputs, outputs, and I/Os.		Power
T3	V _{CC_SD}	Card-detect supply voltage. V _{CC_SD} powers the card-detect circuitry.		Power
U3	$\overline{CD1}$	Card detect connected to card. Pulled up to V _{CC_CF} through 100 k Ω .	V _{CC_SD}	I
V3	$\overline{CD2}$	Card detect connected to card. Pulled up to V _{CC_CF} through 100 k Ω .	V _{CC_SD}	I
W3	\overline{SCD}	Card detect connected to controller	V _{CC_SD}	O
A4	SD14	Data bit 14 connected to controller	V _{CC_s}	I/O
B4	SD13	Data bit 13 connected to controller	V _{CC_s}	I/O
C4	$\overline{SINPACK}$	Input acknowledge connected to controller	V _{CC_s}	I/O
D4	V _{CC_s}	Controller-side supply voltage. V _{CC_s} powers all controller-side inputs, outputs, and I/Os.		Power
E4	GND	Ground		
F4	V _{CC_s}	Controller-side supply voltage. V _{CC_s} powers all controller-side inputs, outputs, and I/Os.		Power
G4	GND	Ground		
H4	V _{CC_s}	Controller-side supply voltage. V _{CC_s} powers all controller-side inputs, outputs, and I/Os.		Power
J4	GND	Ground		
K4	$\overline{SCE2}$	Card enable connected to controller	V _{CC_s}	I
L4	GND	Ground		
M4	V _{CC_s}	Controller-side supply voltage. V _{CC_s} powers all controller-side inputs, outputs, and I/Os.		Power
N4	GND	Ground		
P4	GND	Ground		
R4	V _{CC_s}	Controller-side supply voltage. V _{CC_s} powers all controller-side inputs, outputs, and I/Os.		Power
T4	DIR(\overline{S}/CF)	Direction controls flow of data from system to CF and vice-versa	V _{CC_s}	I
U4	DIR_OUT	Data direction generated by CF4320H. Can be connected to DIR(\overline{S}/CF).	V _{CC_s}	O
V4	SAO0	Address bit 0 connected to controller	V _{CC_s}	I
W4	SAO1	Address bit 1 connected to controller	V _{CC_s}	I
A5	SD12	Data bit 12 connected to controller	V _{CC_s}	I/O
B5	SD10	Data bit 10 connected to controller	V _{CC_s}	I/O
C5	SD08	Data bit 8 connected to controller	V _{CC_s}	I/O
D5	SD06	Data bit 6 connected to controller	V _{CC_s}	I/O
E5	SD04	Data bit 4 connected to controller	V _{CC_s}	I/O
F5	SD02	Data bit 2 connected to controller	V _{CC_s}	I/O
G5	SD00	Data bit 0 connected to controller	V _{CC_s}	I/O
H5	\overline{ENL}	Enable for data bits 0–7. Pulled up to V _{CC_s} through 100 k Ω .	V _{CC_s}	I
J5	$\overline{MASTER_EN}$	Enable for all transceivers and buffers except the card-detect circuitry	V _{CC_s}	I
K5	\overline{SOE}	Output enable connected to controller	V _{CC_s}	I
L5	\overline{SWE}	Write enable connected to controller	V _{CC_s}	I
M5	SREADY	Ready connected to controller	V _{CC_s}	O

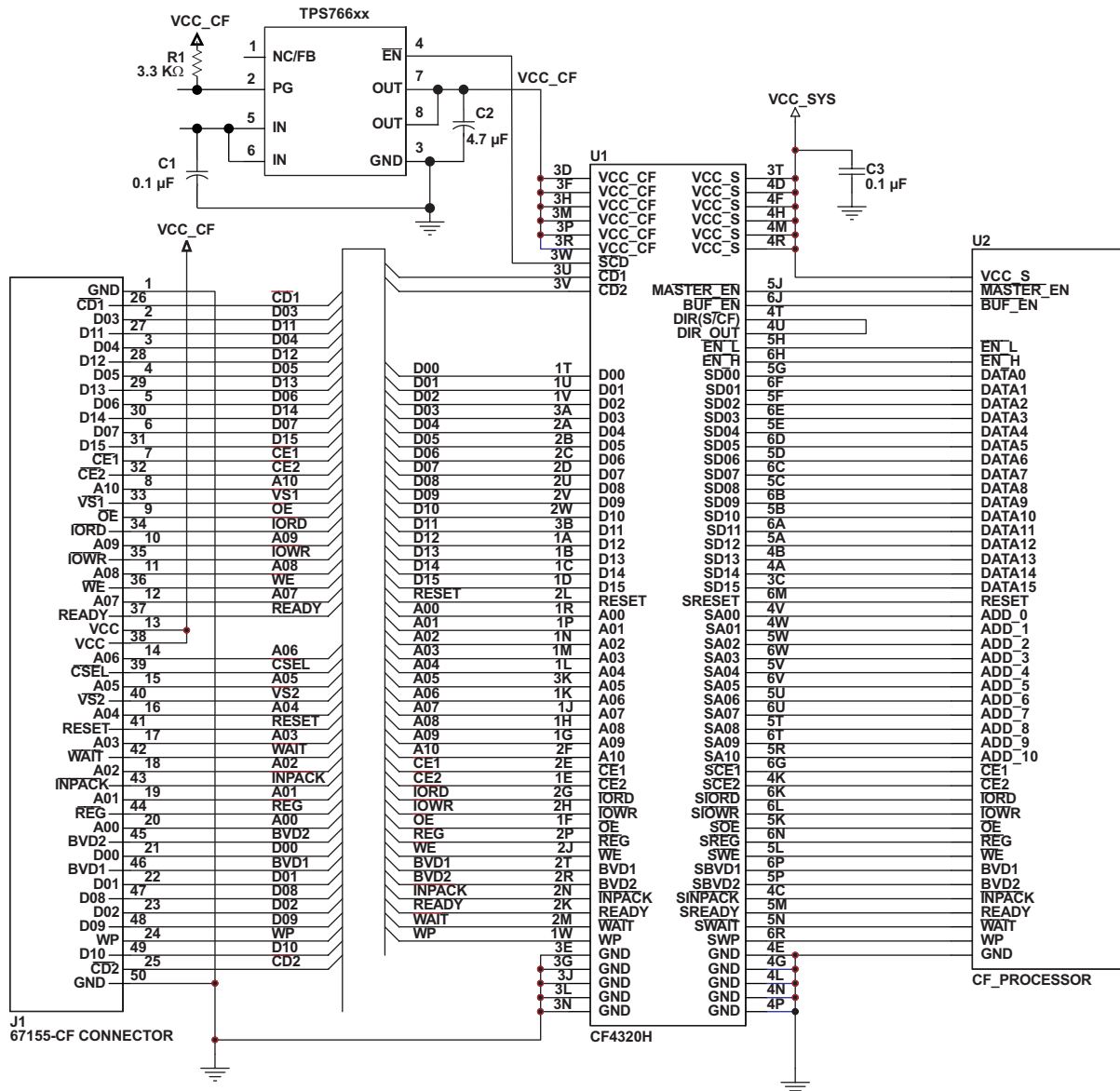
TERMINAL FUNCTIONS (continued)

TERMINAL		DESCRIPTION	REFERENCED TO	I/O ⁽¹⁾
NO.	NAME			
N5	$\overline{\text{SWAIT}}$	Wait connected to controller	V _{CC_S}	O
P5	SBVD2	BVD2 connected to controller	V _{CC_S}	O
R5	SA10	Address bit 10 connected to controller	V _{CC_S}	I
T5	SA08	Address bit 8 connected to controller	V _{CC_S}	I
U5	SA06	Address bit 6 connected to controller	V _{CC_S}	I
V5	SA04	Address bit 4 connected to controller	V _{CC_S}	I
W5	SA02	Address bit 2 connected to controller	V _{CC_S}	I
A6	SD11	Data bit 11 connected to controller	V _{CC_S}	I/O
B6	SD09	Data bit 9 connected to controller	V _{CC_S}	I/O
C6	SD07	Data bit 7 connected to controller	V _{CC_S}	I/O
D6	SD05	Data bit 5 connected to controller	V _{CC_S}	I/O
E6	SD03	Data bit 3 connected to controller	V _{CC_S}	I/O
F6	SD01	Data bit 1 connected to controller	V _{CC_S}	I/O
G6	$\overline{\text{SCE1}}$	Card enable connected to controller	V _{CC_S}	I
H6	$\overline{\text{ENH}}$	Enable for data bits 8–15. Pulled up to V _{CC_S} through 100 k Ω .	V _{CC_S}	I
J6	$\overline{\text{BUF_EN}}$	Enable for address and control/status lines. Pulled up to V _{CC_S} through 100 k Ω .	V _{CC_S}	I
K6	$\overline{\text{SIORD}}$	I/O read connected to controller	V _{CC_S}	I
L6	$\overline{\text{SIOWR}}$	I/O write connected to controller	V _{CC_S}	I
M6	SRESET	Reset connected to controller	V _{CC_S}	I
N6	$\overline{\text{SREG}}$	Register connected to controller	V _{CC_S}	I
P6	SBVD1	BVD1 connected to controller	V _{CC_S}	O
R6	SWP	Write protect connected to controller	V _{CC_S}	O
T6	SA09	Address bit 9 connected to controller	V _{CC_S}	I
U6	SA07	Address bit 7 connected to controller	V _{CC_S}	I
V6	SA05	Address bit 5 connected to controller	V _{CC_S}	I
W6	SA03	Address bit 3 connected to controller	V _{CC_S}	I

LOGIC DIAGRAM



NOTE: R INT \geq 100 k Ω



Absolute Maximum Ratings⁽¹⁾

over operating free-air temperature range (unless otherwise noted)

			MIN	MAX	UNIT		
V_{CC_S}	Supply voltage range		-0.5	4.6	V		
V_{CC_CF}			-0.5	6.5			
V_{CC_SD}							
V_I	Input voltage range	I/O ports	SD, SA ⁽²⁾	-0.5	4.6	V	
			D, A	-0.5	6.5		
		Input ports	$\overline{SCE1}$, $\overline{SCE2}$, \overline{SIORD} , \overline{SIOWR} , \overline{SOE} , \overline{SREG} , \overline{SWE}	-0.5	4.6		
			BVD1, BVD2, READY, INPACK, WAIT, WP	-0.5	6.5		
Control ports	$\overline{DIR}(\overline{S}/CF)$, $\overline{MASTER_EN}$, ENL, ENH	-0.5	4.6				
V_O	Voltage range applied to any output in the high-impedance or power-off state ⁽²⁾	System port		-0.5	4.6	V	
		CF port		-0.5	6.5		
V_O	Voltage range applied to any output in the high or low state ^{(2) (3)}	System port		-0.5	$V_{CC_S} + 0.5$	V	
		CF port		-0.5	$V_{CC_CF} + 0.5$		
I_{IK}	Input clamp current	$V_I < 0$			-50	mA	
I_{OK}	Output clamp current	$V_O < 0$			-50	mA	
I_O	Continuous output current				±50	mA	
	Continuous current through each V_{CC_S} , V_{CC_CF} , V_{CC_SD} , or GND				±100	mA	
θ_{JA}	Package thermal impedance ⁽⁴⁾				36	°C/W	
T_{stg}	Storage temperature range				-65	150	°C

- (1) Stresses beyond those listed under "absolute maximum ratings" may cause permanent damage to the device. These are stress ratings only, and functional operation of the device at these or any other conditions beyond those indicated under "recommended operating conditions" is not implied. Exposure to absolute-maximum-rated conditions for extended periods may affect device reliability.
- (2) The input and output negative-voltage ratings may be exceeded if the input and output current ratings are observed.
- (3) This value is limited to 6.5 V maximum.
- (4) The package thermal impedance is calculated in accordance with JESD 51-7.

Recommended Operating Conditions^{(1) (2) (3)}

			V _{CCI}	V _{CCO}	MIN	MAX	UNIT
V _{CC_SD}	Card-detect supply voltage				1.65	5.5	V
V _{CC_S}	System-side supply voltage				1.65	V _{CC_CF}	V
V _{CC_CF}	CF-side supply voltage				3	5.5	V
V _{IH}	High-level input voltage	Card-detect inputs (CD1, CD2)	1.65 V to 5.5 V		V _{CC_SD} × 0.65		V
V _{IL}	Low-level input voltage	Card-detect inputs (CD1, CD2)	1.65 V to 5.5 V		V _{CC_SD} × 0.35		V
V _{IH}	High-level input voltage	System port (SD, SA, SRESET)	1.65 V to 1.95 V		V _{CC_S} × 0.65		V
			1.95 V to 2.7 V		1.7		
			2.7 V to 3.6 V		2		
V _{IL}	Low-level input voltage	System port (SD, SA, SRESET)	1.65 V to 1.95 V		V _{CC_S} × 0.35		V
			1.95 V to 2.7 V		0.7		
			2.7 V to 3.6 V		0.8		
V _{IH}	High-level input voltage	Control inputs (DIR, MASTER_EN, ENL, ENH, BUF_EN)	1.65 V to 1.95 V		V _{CC_S} × 0.65		V
			1.95 V to 2.7 V		1.7		
			2.7 V to 3.6 V		2		
V _{IL}	Low-level input voltage	Control inputs (DIR, MASTER_EN, ENL, ENH, BUF_EN)	1.65 V to 1.95 V		V _{CC_S} × 0.35		V
			1.95 V to 2.7 V		0.7		
			2.7 V to 3.6 V		0.8		
V _{IH}	High-level input voltage	CF port (D, A)	3 V to 3.6 V		2		V
			4.5 V to 5.5 V		V _{CC_CF} × 0.7		
V _{IL}	Low-level input voltage	CF port (D, A)	3 V to 3.6 V		0.8		V
			4.5 V to 5.5 V		V _{CC_CF} × 0.3		
V _O	Card-detect output voltage				0	V _{CC_SD}	V
	System-side output voltage				0	V _{CC_S}	
	CF-side output voltage				0	V _{CC_CF}	
I _{OH}	High-level output current	Card detect		1.65 V to 1.95 V	–2		mA
				1.95 V to 2.7 V	–4		
				2.7 V to 3.6 V	–8		
				4.5 V to 5.5 V	–12		
I _{OL}	Low-level output current	Card detect		1.65 V to 1.95 V	2		mA
				1.95 V to 2.7 V	4		
				2.7 V to 3.6 V	8		
				4.5 V to 5.5 V	12		
I _{OH}	High-level output current	System port		1.65 V to 1.95 V	2		mA
				1.95 V to 2.7 V	6		
				2.7 V to 3.6 V	12		
I _{OL}	Low-level output current	System port		1.65 V to 1.95 V	2		mA
				1.95 V to 2.7 V	6		
				2.7 V to 3.6 V	12		
I _{OH}	High-level output current	CF port		3 V to 3.6 V	12		mA
				4.5 V to 5.5 V	16		
I _{OL}	Low-level output current	CF port		3 V to 3.6 V	12		mA
				4.5 V to 5.5 V	16		

(1) V_{CCI} is the V_{CC} associated with the input port.

(2) V_{CCO} is the V_{CC} associated with the output port.

(3) All unused data inputs of the device must be held at V_{CCI} or GND to ensure proper device operation. Refer to the TI application report, *Implications of Slow or Floating CMOS Inputs*, literature number SCBA004.

Recommended Operating Conditions^{(1) (2) (3)} (continued)

		V _{CCI}	V _{CCO}	MIN	MAX	UNIT
Δt/Δv	Input transition rise or fall rate	1.65 V to 2.7 V			>20	ns/V
		2.7 V to 3.6 V			>20	
		4.5 V to 5.5 V			>20	
T _A	Operating free-air temperature			-40	85	°C

Electrical Characteristics

over recommended operating free-air temperature range (CF card-detect logic) (unless otherwise noted)

PARAMETER	TEST CONDITIONS		V _{CC_SD}	T _A = 25°C			-40°C to 85°C		UNIT
				MIN	TYP	MAX	MIN	MAX	
V _{OH}	V _I = V _{IH}	I _{OH} = -100 μA	1.65 V to 5.5 V	V _{CC_SD} - 0.1			V _{CC_SD} - 0.2	V	
		I _{OH} = -2 mA	1.65 V	1.2		1.2			
		I _{OH} = -4 mA	2.3 V	2		2			
		I _{OH} = -6 mA	2.7 V	2.3		2.3			
		I _{OH} = -8 mA	3 V	2.4		2.4			
		I _{OH} = -12 mA	4.5 V	3.8		3.8			
V _{OL}	V _I = V _{IL}	I _{OL} = 100 μA	1.65 V to 5.5 V			0.1	0.2	V	
		I _{OL} = 2 mA	1.65 V			0.2	0.2		
		I _{OL} = 4 mA	2.3 V			0.2	0.2		
		I _{OL} = 6 mA	2.7 V			0.3	0.3		
		I _{OL} = 8 mA	3 V			0.4	0.4		
		I _{OL} = 12 mA	4.5 V			0.5	0.5		
I _I	V _I = V _{CC_SD}	1.65 V to 5.5 V			±0.5		±1	μA	
	V _I = 0 V				-55		-60		
I _{off}	V _I or V _O = 0 to 5.5 V	0 V			55		60	μA	
R _{INT}	$\overline{CD1} = \text{GND}, \overline{CD2} = \text{GND}$	1.65 V to 5.5 V		150	300		100 300	kΩ	
I _{CC_SD}	$\overline{CD1}$ and $\overline{CD2} = V_{CC_SD},$ I _{O_SD} = 0	5.5 V			0.5		1	μA	
	$\overline{CD1}$ or $\overline{CD2} = \text{GND},$ $\overline{CD2}$ or $\overline{CD1} = V_{CC_SD},$ I _{O_SD} = 0				10		10		
C _I	$\overline{CD1}$ or $\overline{CD2}$	V _I = V _{CC_SD} or GND	5.5 V		9			pF	

Electrical Characteristics^{(1) (2)}

over recommended operating free-air temperature range (unless otherwise noted)

PARAMETER		TEST CONDITIONS		V _{CC_S}	V _{CC_CF}	T _A = 25°C			–40°C to 85°C		UNIT
						MIN	TYP	MAX	MIN	MAX	
V _{T+}	$\overline{\text{SOE}}, \overline{\text{SCE1}},$ $\overline{\text{SCE2}}, \overline{\text{SIORD}},$ $\overline{\text{SIOWR}}, \overline{\text{SWE}},$ $\overline{\text{SREG}}$			1.65 V	3 V to 5.5 V	0.95			0.6	1.4	V
				2.3 V		1.32			0.9	1.8	
				2.7 V		1.49			1	2	
				3 V		1.67			1.2	2.2	
V _{T–}	$\overline{\text{SOE}}, \overline{\text{SCE1}},$ $\overline{\text{SCE2}}, \overline{\text{SIORD}},$ $\overline{\text{SIOWR}}, \overline{\text{SWE}},$ $\overline{\text{SREG}}$			1.65 V	3 V to 5.5 V	0.66			0.19	0.8	V
				2.3 V		0.87			0.39	1.15	
				2.7 V		0.98			0.49	1.32	
				3 V		1.08			0.59	1.5	
ΔV _T	$\overline{\text{SOE}}, \overline{\text{SCE1}},$ $\overline{\text{SCE2}}, \overline{\text{SIORD}},$ $\overline{\text{SIOWR}}, \overline{\text{SWE}},$ $\overline{\text{SREG}}$			1.65 V	3 V to 5.5 V	0.31			0.1	0.7	V
				2.3 V		0.46			0.25	0.7	
				2.7 V		0.52			0.3	0.9	
				3 V		0.61			0.4	0.9	
V _{T+}	BVD1, BVD2, READY, INPACK, WAIT			1.65 V to 3.6 V	3 V	1.67			1.3	2.2	V
				4.5 V	2.44			1.9	3.1		
V _{T–}	BVD1, BVD2, READY, INPACK, WAIT, WP			1.65 V to 3.6 V	3 V	1.11			0.6	1.5	V
				4.5 V	1.43			1	2		
ΔV _T	BVD1, BVD2, READY, INPACK, WAIT			1.65 V to 3.6 V	3 V	0.58			0.35	1	V
				4.5 V	1.02			0.6	1.5		
V _{T+}	$\overline{\text{BUF_EN}}, \overline{\text{ENH}},$ $\overline{\text{ENL}},$ $\overline{\text{MASTER_EN}}$			1.65 V	3 V to 5.5 V	1			0.6	1.4	V
				2.3 V		1.37			1.1	1.8	
				2.7 V		1.54			1.1	2	
				3 V		1.72			1.3	2.2	
V _{T–}	$\overline{\text{BUF_EN}}, \overline{\text{ENH}},$ $\overline{\text{ENL}},$ $\overline{\text{MASTER_EN}}$			1.65 V	3 V to 5.5 V	0.34			0.15	1	V
				2.3 V		0.63			0.15	1.2	
				2.7 V		0.75			0.2	1.32	
				3 V		0.88			0.4	1.5	
ΔV _T	$\overline{\text{BUF_EN}}, \overline{\text{ENH}},$ $\overline{\text{ENL}},$ $\overline{\text{MASTER_EN}}$			1.65 V	3 V to 5.5 V	0.67			0.08	1.1	V
				2.3 V		0.76			0.2	1.2	
				2.7 V		0.8			0.26	1.3	
				3 V		0.86			0.3	1.4	
V _{OH_S}		V _I = V _{IH}	I _{OH} = –100 μA	1.65 V to 3.6 V	3 V to 5.5 V	V _{CC_S} – 0.1			V _{CC_S} – 0.2		V
			I _{OH} = –2 mA	1.65 V		1.2			1.2		
			I _{OH} = –4 mA	2.3 V		2			2		
			I _{OH} = –6 mA	2.7 V		2.3			2.3		
			I _{OH} = –12 mA	3 V		2.4			2.4		
V _{OL_S}		V _I = V _{IL}	I _{OL} = 100 μA	1.65 V to 3.6 V	3 V to 5.5 V				0.1	0.2	V
			I _{OL} = 2 mA	1.65 V					0.2	0.2	
			I _{OL} = 4 mA	2.3 V					0.2	0.2	
			I _{OL} = 6 mA	2.7 V					0.3	0.3	
			I _{OL} = 12 mA	3 V					0.5	0.5	

(1) V_{CCI} is the V_{CC} associated with the input port.

(2) V_{CCO} is the V_{CC} associated with the output port.

Electrical Characteristics (continued)

over recommended operating free-air temperature range (unless otherwise noted)

PARAMETER		TEST CONDITIONS		V_{CC_S}	V_{CC_CF}	$T_A = 25^\circ\text{C}$			$-40^\circ\text{C to } 85^\circ\text{C}$		UNIT
						MIN	TYP	MAX	MIN	MAX	
I_{CC_CF}	Input (D15–D00)	$V_I = V_{CC_CF}$ or GND	$I_O = 0$, $\overline{DIR}(\overline{S}/CF) = \text{GND}$, BVD1, BVD2, INPACK, READY, WAIT, WP = V_{CC_CF}	1.65 V to 3.6 V	3 V to 5.5 V		1.5			3	μA
	Inputs (BVD1, BVD2, INPACK, READY, WAIT, WP)	BVD1 = BVD2 = INPACK = READY WAIT = WP = V_{CC_CF}	$I_O = 0$, $\overline{DIR}(\overline{S}/CF) = \text{GND}$, D15–D00 = V_{CC_CF} or GND				1.5		3		
		One of BVD1, BVD2, INPACK, READY, WAIT, WP = GND, All others = V_{CC_CF}	$I_O = 0$, $\overline{DIR}(\overline{S}/CF) = \text{GND}$, D15–D00 = V_{CC_CF} or GND				60		60		
R_{INT}				1.65 V to 3.6 V	3 V to 5.5 V		150	300		300	k Ω
C_I	Control inputs	$V_I = 3.3\text{ V or GND}$		3.3 V	3.3 V		3				pF
	\overline{SA}_{xx} , \overline{SOE} , SCE1, SCE2, SIORD, SIOWR, SREG, SWE						3				
	Axx, BVD1, BVD2, READY, INPACK, WAIT, WP						9				
C_{IO}	S I/O ports	$V_O = 3.3\text{ V or GND}$		3.3 V	3.3 V		7				pF
	CF I/O ports						12				

Switching Characteristics

 over recommended operating free-air temperature range ($\overline{CD1}$, $\overline{CD2}$) (see [Figure 1](#))

PARAMETER	FROM (INPUT)	TO (OUTPUT)	V_{CC_SD}	$T_A = 25^\circ\text{C}$			$-40^\circ\text{C to } 85^\circ\text{C}$		UNIT
				MIN	TYP	MAX	MIN	MAX	
t_{pd}	$\overline{CD1}$ or $\overline{CD2}$	\overline{SCD}	$1.8\text{ V} \pm 0.15\text{ V}$	3.1	7.1	13.5	1.8	15.5	ns
			$2.5\text{ V} \pm 0.2\text{ V}$	2.7	4.6	7.1	1.6	9.1	
			2.7 V	2.4	4	5.7	1.6	9.1	
			$3.3\text{ V} \pm 0.3\text{ V}$	2	3.4	5.1	1.2	6.8	
			$5\text{ V} \pm 0.5\text{ V}$	1.7	2.6	3.6	1	5.5	

Switching Characteristics

 over recommended operating free-air temperature range ($\overline{BVD1}$, $\overline{BVD2}$, \overline{INPACK} , \overline{READY} , \overline{WAIT} , \overline{WP}) (see [Figure 1](#))

PARAMETER	FROM (INPUT)	TO (OUTPUT)	TEST CONDITIONS	V_{CC_S}	V_{CC_CF}	$T_A = 25^\circ\text{C}$			$-40^\circ\text{C to } 85^\circ\text{C}$		UNIT
						MIN	TYP	MAX	MIN	MAX	
t_{pd}	CF input	S output	$\overline{MASTER_EN} = \overline{BUF_EN} = V_{IL}$	$1.8\text{ V} \pm 0.15\text{ V}$	$3.3\text{ V} \pm 0.3\text{ V}$	3.1	6	10.2	2.4	12.9	ns
					$5\text{ V} \pm 0.5\text{ V}$	2.9	5.6	9.6	2.2	13.9	
					$2.5\text{ V} \pm 0.2\text{ V}$	3.3	4.6	6.5	1.9	10	
					$5\text{ V} \pm 0.5\text{ V}$	2.5	4.2	5.8	1.7	8.6	
					$3.3\text{ V} \pm 0.3\text{ V}$	3.3	4	5.6	1.6	8.8	
					$5\text{ V} \pm 0.5\text{ V}$	2.3	3.6	4.9	1.5	7	
t_{en}	$\overline{MASTER_EN}$	S output	$\overline{BUF_EN} = V_{IL}$	$1.8\text{ V} \pm 0.15\text{ V}$	$3.3\text{ V} \pm 0.3\text{ V}$	11.1	18.9	30.7	9.2	35.5	ns
					$5\text{ V} \pm 0.5\text{ V}$	11.1	19.3	30.9	8	35.6	
					$2.5\text{ V} \pm 0.2\text{ V}$	3.3	12.9	17.4	6.9	22.6	
					$5\text{ V} \pm 0.5\text{ V}$	9.9	13.1	17.4	7	22.6	
					$3.3\text{ V} \pm 0.3\text{ V}$	3.3	11.2	13.4	6.3	18.3	
					$5\text{ V} \pm 0.5\text{ V}$	9.5	11.3	13.5	6.3	18.2	
t_{dis}	$\overline{MASTER_EN}$	S output	$\overline{BUF_EN} = V_{IL}$	$1.8\text{ V} \pm 0.15\text{ V}$	$3.3\text{ V} \pm 0.3\text{ V}$	6.8	13.7	23.9	6	25.1	ns
					$5\text{ V} \pm 0.5\text{ V}$	6.1	13.4	22	5.4	23.3	
					$2.5\text{ V} \pm 0.2\text{ V}$	3.3	8.6	13.3	4	14.5	
					$5\text{ V} \pm 0.5\text{ V}$	4.6	8.5	13.6	3.9	14.5	
					$3.3\text{ V} \pm 0.3\text{ V}$	3.3	8.1	12.2	4.2	13.2	
					$5\text{ V} \pm 0.5\text{ V}$	4.5	8	12.2	3.6	18.2	
t_{en}	$\overline{BUF_EN}$	S output	$\overline{MASTER_EN} = V_{IL}$	$1.8\text{ V} \pm 0.15\text{ V}$	$3.3\text{ V} \pm 0.3\text{ V}$	8.7	17.7	33.2	7.6	35.5	ns
					$5\text{ V} \pm 0.5\text{ V}$	10.7	18.3	29.3	8.7	35.6	
					$2.5\text{ V} \pm 0.2\text{ V}$	3.3	12.4	16.6	6.6	22.6	
					$5\text{ V} \pm 0.5\text{ V}$	9.6	12.6	16.7	6.6	22.6	
					$3.3\text{ V} \pm 0.3\text{ V}$	3.3	10.9	13	6.1	18.3	
					$5\text{ V} \pm 0.5\text{ V}$	9.2	10.9	13	6.1	18.2	
t_{dis}	$\overline{BUF_EN}$	S output	$\overline{MASTER_EN} = V_{IL}$	$1.8\text{ V} \pm 0.15\text{ V}$	$3.3\text{ V} \pm 0.3\text{ V}$	6.9	12.9	22.3	5.9	24.2	ns
					$5\text{ V} \pm 0.5\text{ V}$	5.4	12.4	20.5	4.8	22.8	
					$2.5\text{ V} \pm 0.2\text{ V}$	3.3	8	12.7	3.6	14.5	
					$5\text{ V} \pm 0.5\text{ V}$	4.2	7.9	12.8	3.6	14.2	
					$3.3\text{ V} \pm 0.3\text{ V}$	3.3	7.7	11.7	3.8	12.3	
					$5\text{ V} \pm 0.5\text{ V}$	4.1	7.6	11.7	3.3	12.4	

Switching Characteristics

over recommended operating free-air temperature range (data bus I/Os) (see [Figure 1](#))

PARAMETER	FROM (INPUT)	TO (OUTPUT)	TEST CONDITIONS	V _{CC,S}	V _{CC,CF}	T _A = 25°C			–40°C to 85°C		UNIT
						MIN	TYP	MAX	MIN	MAX	
t _{pd}	D	SD	$\overline{\text{MASTER_EN}} =$ $\overline{\text{ENL}} = \overline{\text{ENH}} = V_{IL}$	1.8 V ± 0.15 V	3.3 V ± 0.3 V	4.2	7.2	11.8	3	13.7	ns
					5 V ± 0.5 V	3.7	6.4	10.7	2.7	13.9	
				2.5 V ± 0.2 V	3.3 V ± 0.3 V	3.8	5.7	8	2.4	10	
					5 V ± 0.5 V	3.3	4.9	6.8	2.1	12.4	
				3.3 V ± 0.3 V	3.3 V ± 0.3 V	3.5	5.1	6.9	2.2	8.8	
					5 V ± 0.5 V	3	4.3	5.7	1.8	7	
	SD	D		1.8 V ± 0.15 V	3.3 V ± 0.3 V	3.4	5.7	9.8	2.6	11.1	
					5 V ± 0.5 V	3.1	5.4	9.6	2.4	9.6	
				2.5 V ± 0.2 V	3.3 V ± 0.3 V	2.8	4.3	6.2	1.9	8.2	
					5 V ± 0.5 V	2.6	3.8	5.4	1.7	7	
				3.3 V ± 0.3 V	3.3 V ± 0.3 V	2.5	3.7	5.2	1.5	7.2	
					5 V ± 0.5 V	2.2	3.3	4.5	1.4	6	
t _{en}	$\overline{\text{MASTER_EN}}$	D	$\overline{\text{ENL}} = \overline{\text{ENH}} = V_{IL}$	1.8 V ± 0.15 V	3.3 V ± 0.3 V	13.7	18.2	24.4	9.4	27.9	ns
					5.5 V ± 0.5 V	13.7	17.9	29.9	8	31	
				2.5 V ± 0.2 V	3.3 V ± 0.3 V	12.3	15.1	18.8	7.9	23	
					5.5 V ± 0.5 V	12.3	14.8	17.6	8	21.8	
				3.3 V ± 0.3 V	3.3 V ± 0.3 V	11.6	14	17.1	7.3	21.4	
					5.5 V ± 0.5 V	11.6	13.7	15.9	7.4	20.3	
	SD	D		1.8 V ± 0.15 V	3.3 V ± 0.3 V	11.6	19.6	31.8	9.4	36.3	
					5.5 V ± 0.5 V	11.7	20.1	32	9.5	36.2	
				2.5 V ± 0.2 V	3.3 V ± 0.3 V	10.3	13.4	18	7.2	22.6	
					5.5 V ± 0.5 V	10.3	13.6	18.1	7.1	22.6	
				3.3 V ± 0.3 V	3.3 V ± 0.3 V	9.8	11.6	14	6.4	18.3	
					5.5 V ± 0.5 V	9.8	11.7	14	6.4	18.2	
t _{dis}	$\overline{\text{MASTER_EN}}$	D	$\overline{\text{ENL}} = \overline{\text{ENH}} = V_{IL}$	1.8 V ± 0.15 V	3.3 V ± 0.3 V	8.6	12.8	18.1	7.3	20.2	ns
					5.5 V ± 0.5 V	7.6	11.5	16.4	6.3	17.8	
				2.5 V ± 0.2 V	3.3 V ± 0.3 V	7.8	10.8	14.7	6.4	16.4	
					5.5 V ± 0.5 V	6.7	9.4	12.6	5.4	13.8	
				3.3 V ± 0.3 V	3.3 V ± 0.3 V	7.2	9.9	13.4	5.9	15	
					5.5 V ± 0.5 V	6.1	8.6	11.4	4.8	12.5	
	SD	D		1.8 V ± 0.15 V	3.3 V ± 0.3 V	6.9	12.9	21.7	6	24.2	
					5.5 V ± 0.5 V	6.1	12.6	20.8	5.3	22.8	
				2.5 V ± 0.2 V	3.3 V ± 0.3 V	4.9	7.9	11.8	4.1	14.5	
					5.5 V ± 0.5 V	4.7	7.8	11.7	3.9	14.2	
				3.3 V ± 0.3 V	3.3 V ± 0.3 V	5	7.1	9.8	4	12	
					5.5 V ± 0.5 V	4.7	7	9.8	3.8	18.2	

Switching Characteristics (continued)

 over recommended operating free-air temperature range (data bus I/Os) (see [Figure 1](#))

PARAMETER	FROM (INPUT)	TO (OUTPUT)	TEST CONDITIONS	V _{CC,S}	V _{CC,CF}	T _A = 25°C			–40°C to 85°C		UNIT
						MIN	TYP	MAX	MIN	MAX	
t _{en}	$\overline{\text{ENL}}$ or $\overline{\text{ENH}}$	D	$\overline{\text{MASTER_EN}} = V_{IL}$	1.8 V ± 0.15 V	3.3 V ± 0.3 V	9.4	17.6	23.4	8.3	27.2	ns
					5.5 V ± 0.5 V	13.5	17.4	22.6	7.7	27.8	
				2.5 V ± 0.2 V	3.3 V ± 0.3 V	12.3	15	18.5	7.9	22.8	
					5.5 V ± 0.5 V	12.3	14.7	17.4	8	21.6	
				3.3 V ± 0.3 V	3.3 V ± 0.3 V	11.7	14.1	17	7.3	21.4	
					5.5 V ± 0.5 V	11.6	13.7	16	7.4	20.3	
		SD		1.8 V ± 0.15 V	3.3 V ± 0.3 V	9.5	18.7	30.5	9.1	35.5	
					5.5 V ± 0.5 V	9.6	19.1	30.5	9.1	35.6	
				2.5 V ± 0.2 V	3.3 V ± 0.3 V	10	13	17.4	6.8	22.6	
					5.5 V ± 0.5 V	10	13.2	17.4	6.8	22.6	
				3.3 V ± 0.3 V	3.3 V ± 0.3 V	9.6	11.3	13.6	6.2	18.3	
					5.5 V ± 0.5 V	9.6	11.4	13.6	6.3	18.2	
t _{dis}	$\overline{\text{ENL}}$ or $\overline{\text{ENH}}$	D	$\overline{\text{MASTER_EN}} = V_{IL}$	1.8 V ± 0.15 V	3.3 V ± 0.3 V	8.5	12.1	16.8	7.2	20.2	ns
					5.5 V ± 0.5 V	7.7	10.8	15	6.3	16.6	
				2.5 V ± 0.2 V	3.3 V ± 0.3 V	7.6	10.4	13.8	6.2	16.4	
					5.5 V ± 0.5 V	6.9	9.1	11.9	5.4	13.1	
				3.3 V ± 0.3 V	3.3 V ± 0.3 V	7.3	9.7	12.9	5.9	15	
					5.5 V ± 0.5 V	6.5	8.4	11	5.2	12	
		SD		1.8 V ± 0.15 V	3.3 V ± 0.3 V	6.5	12	20	5.7	24.2	
					5.5 V ± 0.5 V	5.7	11.8	19	5	22.8	
				2.5 V ± 0.2 V	3.3 V ± 0.3 V	4.6	7.4	11.1	3.8	14.5	
					5.5 V ± 0.5 V	4.4	7.3	11.1	3.7	14.2	
				3.3 V ± 0.3 V	3.3 V ± 0.3 V	4.9	6.8	9.3	4	12	
					5.5 V ± 0.5 V	4.3	6.7	9.2	3.5	18.2	

Switching Characteristics

over recommended operating free-air temperature range (SA10–SA00, $\overline{\text{SCE1}}$, $\overline{\text{SCE2}}$, $\overline{\text{SIORD}}$, $\overline{\text{SIOWR}}$, $\overline{\text{SOE}}$, $\overline{\text{SREG}}$, $\overline{\text{SWE}}$) (see Figure 1)

PARAMETER	FROM (INPUT)	TO (OUTPUT)	TEST CONDITIONS	V_{CC_S}	V_{CC_CF}	$T_A = 25^\circ\text{C}$			$-40^\circ\text{C to } 85^\circ\text{C}$		UNIT			
						MIN	TYP	MAX	MIN	MAX				
t_{pd}	S input	CF output (control)	$\overline{\text{MASTER_EN}} = \overline{\text{BUF_EN}} = V_{IL}$	$1.8\text{ V} \pm 0.15\text{ V}$	$3.3\text{ V} \pm 0.3\text{ V}$	3.4	6.1	9.8	2.5	10.4	ns			
					$5\text{ V} \pm 0.5\text{ V}$	3	5.8	9.7	2.4	10.2				
				$2.5\text{ V} \pm 0.2\text{ V}$	$3.3\text{ V} \pm 0.3\text{ V}$	2.6	4.5	6.7	1.8	8.4				
		$5\text{ V} \pm 0.5\text{ V}$			2.4	4.1	6	1.7	6.8					
		$3.3\text{ V} \pm 0.3\text{ V}$		$3.3\text{ V} \pm 0.3\text{ V}$	2.2	3.9	5.8	1.4	7					
				$5\text{ V} \pm 0.5\text{ V}$	2	3.5	5	1.3	5.8					
	CF output (A pins)	$\overline{\text{MASTER_EN}} = \overline{\text{BUF_EN}} = V_{IL}$	$1.8\text{ V} \pm 0.15\text{ V}$	$3.3\text{ V} \pm 0.3\text{ V}$	3.4	5.7	8.7	2.8	10.3					
				$5\text{ V} \pm 0.5\text{ V}$	3.3	5.4	8.2	2.8	9.7					
			$2.5\text{ V} \pm 0.2\text{ V}$	$3.3\text{ V} \pm 0.3\text{ V}$	2.9	4.3	6.2	1.9	8.4					
				$5\text{ V} \pm 0.5\text{ V}$	2.7	3.9	5.4	1.9	6.8					
			$3.3\text{ V} \pm 0.3\text{ V}$	$3.3\text{ V} \pm 0.3\text{ V}$	2.6	3.7	5.2	1.7	7					
				$5\text{ V} \pm 0.5\text{ V}$	2.3	3.3	4.4	1.5	5.8					
t_{en}	$\overline{\text{MASTER_EN}}$	CF output (control)	$\overline{\text{BUF_EN}} = V_{IL}$	$1.8\text{ V} \pm 0.15\text{ V}$	$3.3\text{ V} \pm 0.3\text{ V}$	10.8	17.9	24.8	7.9	29.7	ns			
					$5\text{ V} \pm 0.5\text{ V}$	10.8	17.5	26.2	8.1	30.2				
				$2.5\text{ V} \pm 0.2\text{ V}$	$3.3\text{ V} \pm 0.3\text{ V}$	9.4	14.2	19.4	6.4	23.3				
					$5\text{ V} \pm 0.5\text{ V}$	9.4	14.1	19.3	6.6	23.1				
	$3.3\text{ V} \pm 0.3\text{ V}$	$3.3\text{ V} \pm 0.3\text{ V}$		8.7	13.1	17.8	5.8	21.4						
		$5\text{ V} \pm 0.5\text{ V}$		8.7	13	17.5	6	21.2						
	t_{dis}	$\overline{\text{MASTER_EN}}$		CF output (control)	$\overline{\text{BUF_EN}} = V_{IL}$	$1.8\text{ V} \pm 0.15\text{ V}$	$3.3\text{ V} \pm 0.3\text{ V}$	7.3	13.8	22.5		6.2	25.8	ns
							$5\text{ V} \pm 0.5\text{ V}$	6.8	12.1	19.7		5.9	26.3	
$2.5\text{ V} \pm 0.2\text{ V}$			$3.3\text{ V} \pm 0.3\text{ V}$			6.1	11.8	19.2	4.9	20.2				
			$5\text{ V} \pm 0.5\text{ V}$			5.9	10	16.3	4.6	19.8				
$3.3\text{ V} \pm 0.3\text{ V}$		$3.3\text{ V} \pm 0.3\text{ V}$	5.6	11		18.3	4.6	19.1						
		$5\text{ V} \pm 0.5\text{ V}$	5.4	9.2		15.5	3.9	18						
t_{en}		$\overline{\text{BUF_EN}}$	CF output (A pins)	$\overline{\text{MASTER_EN}} = V_{IL}$		$1.8\text{ V} \pm 0.15\text{ V}$	$3.3\text{ V} \pm 0.3\text{ V}$	12.9	17.5	23.7	7.7	29.7	ns	
							$5\text{ V} \pm 0.5\text{ V}$	13.3	17.8	24.4	9.4	30.2		
	$2.5\text{ V} \pm 0.2\text{ V}$				$3.3\text{ V} \pm 0.3\text{ V}$	11.7	14.4	17.9	7.5	23.3				
					$5\text{ V} \pm 0.5\text{ V}$	11.8	14.3	17.1	7.7	23.1				
	$3.3\text{ V} \pm 0.3\text{ V}$	$3.3\text{ V} \pm 0.3\text{ V}$	11		13.3	16.2	6.9	21.4						
		$5\text{ V} \pm 0.5\text{ V}$	11.1		13.2	15.3	6.5	21.2						
	t_{dis}	$\overline{\text{BUF_EN}}$	CF output (A pins)		$\overline{\text{MASTER_EN}} = V_{IL}$	$1.8\text{ V} \pm 0.15\text{ V}$	$3.3\text{ V} \pm 0.3\text{ V}$	8.9	13.6	19.7	7.5	25.8		ns
							$5\text{ V} \pm 0.5\text{ V}$	7.6	11.8	17.1	6.6	26.3		
$2.5\text{ V} \pm 0.2\text{ V}$				$3.3\text{ V} \pm 0.3\text{ V}$		8	11.6	16	6.6	20.1				
				$5\text{ V} \pm 0.5\text{ V}$		6.7	9.7	13.2	5	19.8				
$3.3\text{ V} \pm 0.3\text{ V}$		$3.3\text{ V} \pm 0.3\text{ V}$	7.7	10.6		14.7	6	18.2						
		$5\text{ V} \pm 0.5\text{ V}$	6.1	8.9		11.9	4.9	18						
t_{en}		$\overline{\text{BUF_EN}}$	CF output (A pins)	$\overline{\text{MASTER_EN}} = V_{IL}$		$1.8\text{ V} \pm 0.15\text{ V}$	$3.3\text{ V} \pm 0.3\text{ V}$	12.3	16.4	21.9	7.7	27.2	ns	
							$5\text{ V} \pm 0.5\text{ V}$	12.6	16.7	22.6	8.6	29.1		
	$2.5\text{ V} \pm 0.2\text{ V}$				$3.3\text{ V} \pm 0.3\text{ V}$	11.2	13.8	17	7.1	21.7				
					$5\text{ V} \pm 0.5\text{ V}$	11.4	13.7	16.3	7.3	21.5				
	$3.3\text{ V} \pm 0.3\text{ V}$	$3.3\text{ V} \pm 0.3\text{ V}$	10.7		12.9	15.6	6.7	19.5						
		$5\text{ V} \pm 0.5\text{ V}$	10.8		12.8	14.8	6.5	19.6						

Switching Characteristics (continued)

 over recommended operating free-air temperature range (SA10–SA00, $\overline{\text{SCE1}}$, $\overline{\text{SCE2}}$, $\overline{\text{SIORD}}$, $\overline{\text{SIOWR}}$, $\overline{\text{SOE}}$, $\overline{\text{SREG}}$, $\overline{\text{SWE}}$)
 (see [Figure 1](#))

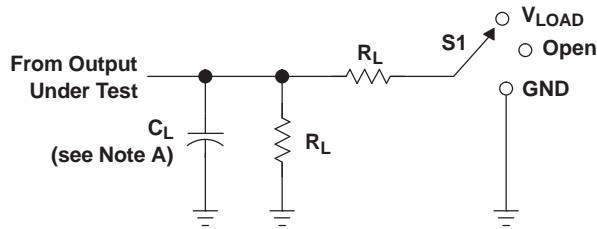
PARAMETER	FROM (INPUT)	TO (OUTPUT)	TEST CONDITIONS	V_{CC_S}	V_{CC_CF}	$T_A = 25^\circ\text{C}$			$-40^\circ\text{C to } 85^\circ\text{C}$		UNIT
						MIN	TYP	MAX	MIN	MAX	
t_{dis}	$\overline{\text{BUF_EN}}$	CF output (A pins)	$\overline{\text{MASTER_EN}} = V_{IL}$	$1.8\text{ V} \pm 0.15\text{ V}$	$3.3\text{ V} \pm 0.3\text{ V}$	8.4	13.9	21.2	7.2	23.2	ns
					$5\text{ V} \pm 0.5\text{ V}$	7.6	12.3	18.5	6.6	23.7	
				$2.5\text{ V} \pm 0.2\text{ V}$	$3.3\text{ V} \pm 0.3\text{ V}$	7.7	12.3	18.2	6.4	19.8	
					$5\text{ V} \pm 0.5\text{ V}$	6.7	10.6	15.3	5	18.4	
				$3.3\text{ V} \pm 0.3\text{ V}$	$3.3\text{ V} \pm 0.3\text{ V}$	7.2	11.5	16.4	5.9	18	
					$5\text{ V} \pm 0.5\text{ V}$	6.4	10	14.3	4.9	17	
t_{en}	$\overline{\text{BUF_EN}}$	CF output	$\overline{\text{MASTER_EN}} = V_{IL}$	$1.8\text{ V} \pm 0.15\text{ V}$	$3.3\text{ V} \pm 0.3\text{ V}$	12.5	16.6	22.3	8.7	27.2	ns
					$5\text{ V} \pm 0.5\text{ V}$	12.8	17	23.1	8.8	29.1	
				$2.5\text{ V} \pm 0.2\text{ V}$	$3.3\text{ V} \pm 0.3\text{ V}$	11.4	14.1	17.5	7.3	21.7	
					$5\text{ V} \pm 0.5\text{ V}$	11.6	14	16.9	7.4	21.5	
				$3.3\text{ V} \pm 0.3\text{ V}$	$3.3\text{ V} \pm 0.3\text{ V}$	10.9	13.2	16	6.8	20	
					$5\text{ V} \pm 0.5\text{ V}$	11	13.1	15.3	6.5	19.6	
t_{dis}	$\overline{\text{BUF_EN}}$	CF output	$\overline{\text{MASTER_EN}} = V_{IL}$	$1.8\text{ V} \pm 0.15\text{ V}$	$3.3\text{ V} \pm 0.3\text{ V}$	8.6	13.9	21.5	7.4	23.2	ns
					$5\text{ V} \pm 0.5\text{ V}$	7.7	12.1	19.8	6.6	23.7	
				$2.5\text{ V} \pm 0.2\text{ V}$	$3.3\text{ V} \pm 0.3\text{ V}$	7.9	12.3	18.5	6.5	19.8	
					$5\text{ V} \pm 0.5\text{ V}$	6.6	10.4	17.1	5	18.4	
				$3.3\text{ V} \pm 0.3\text{ V}$	$3.3\text{ V} \pm 0.3\text{ V}$	7.4	11.7	17.5	6.1	18.9	
					$5\text{ V} \pm 0.5\text{ V}$	6.1	9.7	16.2	4.9	17	
t_{en}	$\overline{\text{MASTER_EN}}$	DIR_OUT	$\overline{\text{BUF_EN}} = V_{IL}$	$1.8\text{ V} \pm 0.15\text{ V}$	$3.3\text{ V} \pm 0.3\text{ V}$	6.1	14.2	29.6	4.9	32.8	ns
					$5\text{ V} \pm 0.5\text{ V}$	6	14.2	30	4.9	33.2	
				$2.5\text{ V} \pm 0.2\text{ V}$	$3.3\text{ V} \pm 0.3\text{ V}$	4.8	8.8	15.4	3.4	19.3	
					$5\text{ V} \pm 0.5\text{ V}$	4.8	8.8	15.5	3.4	19.3	
				$3.3\text{ V} \pm 0.3\text{ V}$	$3.3\text{ V} \pm 0.3\text{ V}$	4.2	6.9	11.1	2.7	14.4	
					$5\text{ V} \pm 0.5\text{ V}$	4.2	6.9	11.1	2.6	14.4	
t_{dis}	$\overline{\text{MASTER_EN}}$	DIR_OUT	$\overline{\text{BUF_EN}} = V_{IL}$	$1.8\text{ V} \pm 0.15\text{ V}$	$3.3\text{ V} \pm 0.3\text{ V}$	5.4	10	16.6	4.2	32.6	ns
					$5\text{ V} \pm 0.5\text{ V}$	5.4	9.9	16.1	4.8	32.6	
				$2.5\text{ V} \pm 0.2\text{ V}$	$3.3\text{ V} \pm 0.3\text{ V}$	3.9	6.5	10.5	1.5	19.3	
					$5\text{ V} \pm 0.5\text{ V}$	3.9	6.6	10.4	1.7	19.3	
				$3.3\text{ V} \pm 0.3\text{ V}$	$3.3\text{ V} \pm 0.3\text{ V}$	4.4	6.7	10.3	1.4	14.4	
					$5\text{ V} \pm 0.5\text{ V}$	4.3	6.7	10.1	1.5	14.4	
t_{pd}	$\overline{\text{SIORD}}$ or $\overline{\text{SOE}}$	DIR_OUT	$\overline{\text{BUF_EN}} = V_{IL}$	$1.8\text{ V} \pm 0.15\text{ V}$	$3.3\text{ V} \pm 0.3\text{ V}$	5	9.3	15.7	4	17.9	ns
					$5\text{ V} \pm 0.5\text{ V}$	5	9.3	15.7	4	17.9	
				$2.5\text{ V} \pm 0.2\text{ V}$	$3.3\text{ V} \pm 0.3\text{ V}$	3.9	6	8.5	2.8	11	
					$5\text{ V} \pm 0.5\text{ V}$	3.9	6	8.5	2.8	11	
				$3.3\text{ V} \pm 0.3\text{ V}$	$3.3\text{ V} \pm 0.3\text{ V}$	3.3	4.7	6.2	2.2	8.2	
					$5\text{ V} \pm 0.5\text{ V}$	3.3	4.7	6.2	2.2	8.2	
t_{pd}	$\overline{\text{BUF_EN}}$	DIR_OUT	$\overline{\text{BUF_EN}} = V_{IL}$	$1.8\text{ V} \pm 0.15\text{ V}$	$3.3\text{ V} \pm 0.3\text{ V}$	8.9	19.5	35.9	7.1	39.2	ns
					$5\text{ V} \pm 0.5\text{ V}$	8.9	19.5	35.8	7	39.3	
				$2.5\text{ V} \pm 0.2\text{ V}$	$3.3\text{ V} \pm 0.3\text{ V}$	6.8	11.9	19.1	5	22.8	
					$5\text{ V} \pm 0.5\text{ V}$	6.8	11.9	19.2	4.9	22.8	
				$3.3\text{ V} \pm 0.3\text{ V}$	$3.3\text{ V} \pm 0.3\text{ V}$	5.8	9	13.3	4	15.8	
					$5\text{ V} \pm 0.5\text{ V}$	5.8	9	13.3	3.9	15.9	

Operating Characteristics

 V_{CCS} and $V_{CC_CF} = 3.3\text{ V}$, $T_A = 25^\circ\text{C}$

PARAMETER			TEST CONDITIONS	TYP	UNIT
C_{pdS}	Power dissipation capacitance per transceiver	System-port input, CF-port output	$C_L = 0$, $f = 10\text{ MHz}$	1.93	pF
				Outputs enabled	
	CF-port input, system-port output	Outputs enabled		14.35	
		Outputs disabled		0.04	
C_{pdCF}	Power dissipation capacitance per transceiver	System-port input, CF-port output	$C_L = 0$, $f = 10\text{ MHz}$	22.85	pF
				Outputs enabled	
	CF-port input, system-port output	Outputs enabled		4.66	
		Outputs disabled		3.65	

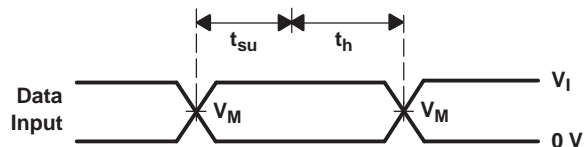
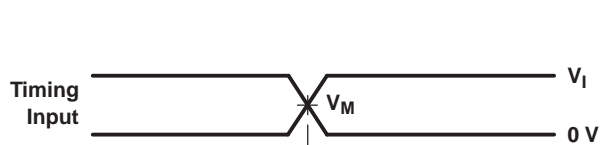
PARAMETER MEASUREMENT INFORMATION



TEST	S1
t_{pd}	Open
t_{PLZ}/t_{PZL}	V_{LOAD}
t_{PHZ}/t_{PZH}	GND

LOAD CIRCUIT

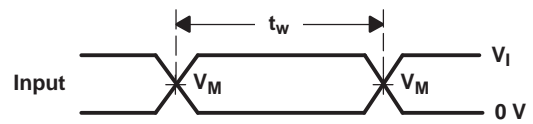
V_{CC}	INPUT		V_M	V_{LOAD}	C_L	R_L	V_{Δ}
	V_I	t_r/t_f					
$1.8 V \pm 0.15 V$	V_{CC}	$\leq 2 \text{ ns}$	$V_{CC}/2$	$2 \times V_{CC}$	15 pF	2 k Ω	0.15 V
$2.5 \pm 0.2 V$	V_{CC}	$\leq 2 \text{ ns}$	$V_{CC}/2$	$2 \times V_{CC}$	15 pF	2 k Ω	0.15 V
2.7 V	2.7 V	$\leq 2.5 \text{ ns}$	1.5 V	6 V	15 pF	2 k Ω	0.3 V
$3.3 V \pm 0.3 V$	2.7 V	$\leq 2.5 \text{ ns}$	1.5 V	6 V	15 pF	2 k Ω	0.3 V
$5.5 V \pm 0.5 V$	2.7 V	$\leq 2.5 \text{ ns}$	1.5 V	6 V	15 pF	2 k Ω	0.5 V



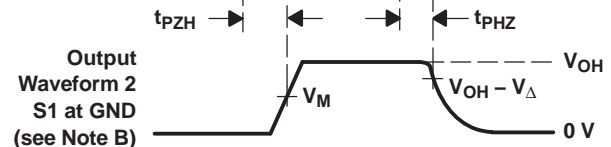
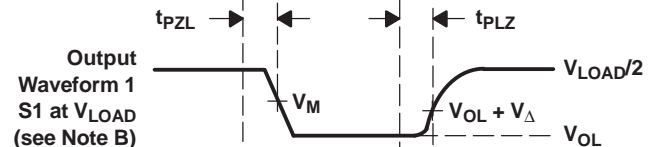
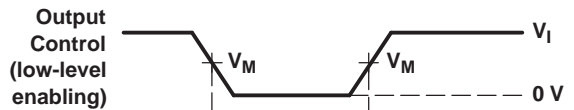
VOLTAGE WAVEFORMS SETUP AND HOLD TIMES



VOLTAGE WAVEFORMS PROPAGATION DELAY TIMES



VOLTAGE WAVEFORMS PULSE DURATION



VOLTAGE WAVEFORMS ENABLE AND DISABLE TIMES


- NOTES:
- A. C_L includes probe and jig capacitance.
 - B. Waveform 1 is for an output with internal conditions such that the output is low, except when disabled by the output control. Waveform 2 is for an output with internal conditions such that the output is high, except when disabled by the output control.
 - C. All input pulses are supplied by generators having the following characteristics: PRR \leq 10 MHz, $Z_O = 50 \Omega$.
 - D. The outputs are measured one at a time, with one transition per measurement.
 - E. t_{PLZ} and t_{PHZ} are the same as t_{dis} .
 - F. t_{PZL} and t_{PZH} are the same as t_{en} .
 - G. t_{PLH} and t_{PHL} are the same as t_{pd} .
 - H. All parameters and waveforms are not applicable to all devices.

Figure 1. Load Circuit and Voltage Waveforms

REVISION HISTORY

Changes from Revision A (August 2006) to Revision B	Page
• Removed Ordering Information table.	2

PACKAGING INFORMATION

Orderable Device	Status (1)	Package Type	Package Drawing	Pins	Package Qty	Eco Plan (2)	Lead/Ball Finish	MSL Peak Temp (3)	Op Temp (°C)	Device Marking (4/5)	Samples
CF4320HZKFR	ACTIVE	LFBGA	ZKF	114	1000	Green (RoHS & no Sb/Br)	SNAGCU	Level-3-260C-168 HR	-40 to 85	CF4320	

(1) The marketing status values are defined as follows:

ACTIVE: Product device recommended for new designs.

LIFEBUY: TI has announced that the device will be discontinued, and a lifetime-buy period is in effect.

NRND: Not recommended for new designs. Device is in production to support existing customers, but TI does not recommend using this part in a new design.

PREVIEW: Device has been announced but is not in production. Samples may or may not be available.

OBSOLETE: TI has discontinued the production of the device.

(2) Eco Plan - The planned eco-friendly classification: Pb-Free (RoHS), Pb-Free (RoHS Exempt), or Green (RoHS & no Sb/Br) - please check <http://www.ti.com/productcontent> for the latest availability information and additional product content details.

TBD: The Pb-Free/Green conversion plan has not been defined.

Pb-Free (RoHS): TI's terms "Lead-Free" or "Pb-Free" mean semiconductor products that are compatible with the current RoHS requirements for all 6 substances, including the requirement that lead not exceed 0.1% by weight in homogeneous materials. Where designed to be soldered at high temperatures, TI Pb-Free products are suitable for use in specified lead-free processes.

Pb-Free (RoHS Exempt): This component has a RoHS exemption for either 1) lead-based flip-chip solder bumps used between the die and package, or 2) lead-based die adhesive used between the die and leadframe. The component is otherwise considered Pb-Free (RoHS compatible) as defined above.

Green (RoHS & no Sb/Br): TI defines "Green" to mean Pb-Free (RoHS compatible), and free of Bromine (Br) and Antimony (Sb) based flame retardants (Br or Sb do not exceed 0.1% by weight in homogeneous material)

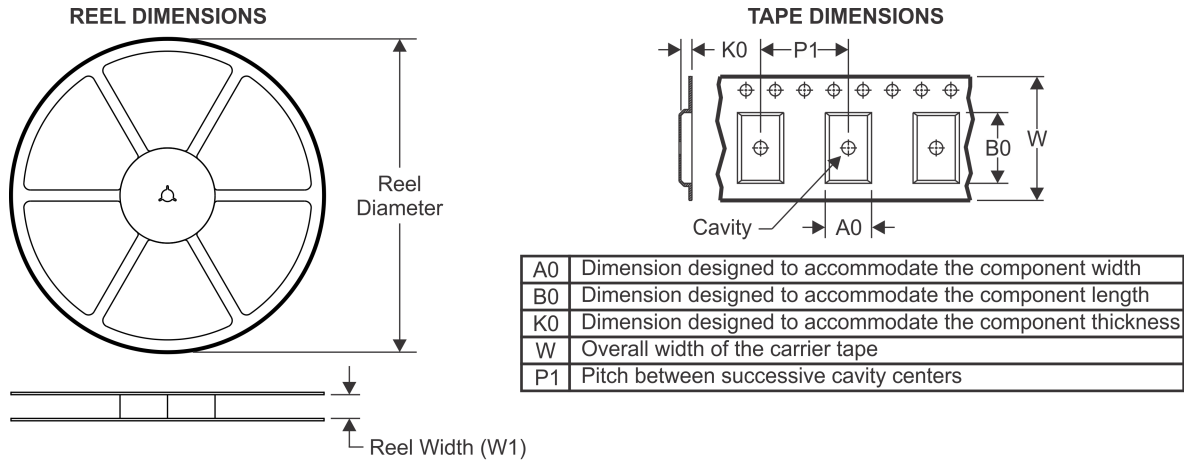
(3) MSL, Peak Temp. -- The Moisture Sensitivity Level rating according to the JEDEC industry standard classifications, and peak solder temperature.

(4) There may be additional marking, which relates to the logo, the lot trace code information, or the environmental category on the device.

(5) Multiple Device Markings will be inside parentheses. Only one Device Marking contained in parentheses and separated by a "~" will appear on a device. If a line is indented then it is a continuation of the previous line and the two combined represent the entire Device Marking for that device.

Important Information and Disclaimer: The information provided on this page represents TI's knowledge and belief as of the date that it is provided. TI bases its knowledge and belief on information provided by third parties, and makes no representation or warranty as to the accuracy of such information. Efforts are underway to better integrate information from third parties. TI has taken and continues to take reasonable steps to provide representative and accurate information but may not have conducted destructive testing or chemical analysis on incoming materials and chemicals. TI and TI suppliers consider certain information to be proprietary, and thus CAS numbers and other limited information may not be available for release.

In no event shall TI's liability arising out of such information exceed the total purchase price of the TI part(s) at issue in this document sold by TI to Customer on an annual basis.

TAPE AND REEL INFORMATION

QUADRANT ASSIGNMENTS FOR PIN 1 ORIENTATION IN TAPE


*All dimensions are nominal

Device	Package Type	Package Drawing	Pins	SPQ	Reel Diameter (mm)	Reel Width W1 (mm)	A0 (mm)	B0 (mm)	K0 (mm)	P1 (mm)	W (mm)	Pin1 Quadrant
CF4320HZKFR	LFBGA	ZKF	114	1000	330.0	24.4	5.8	16.3	1.8	8.0	24.0	Q1

TAPE AND REEL BOX DIMENSIONS

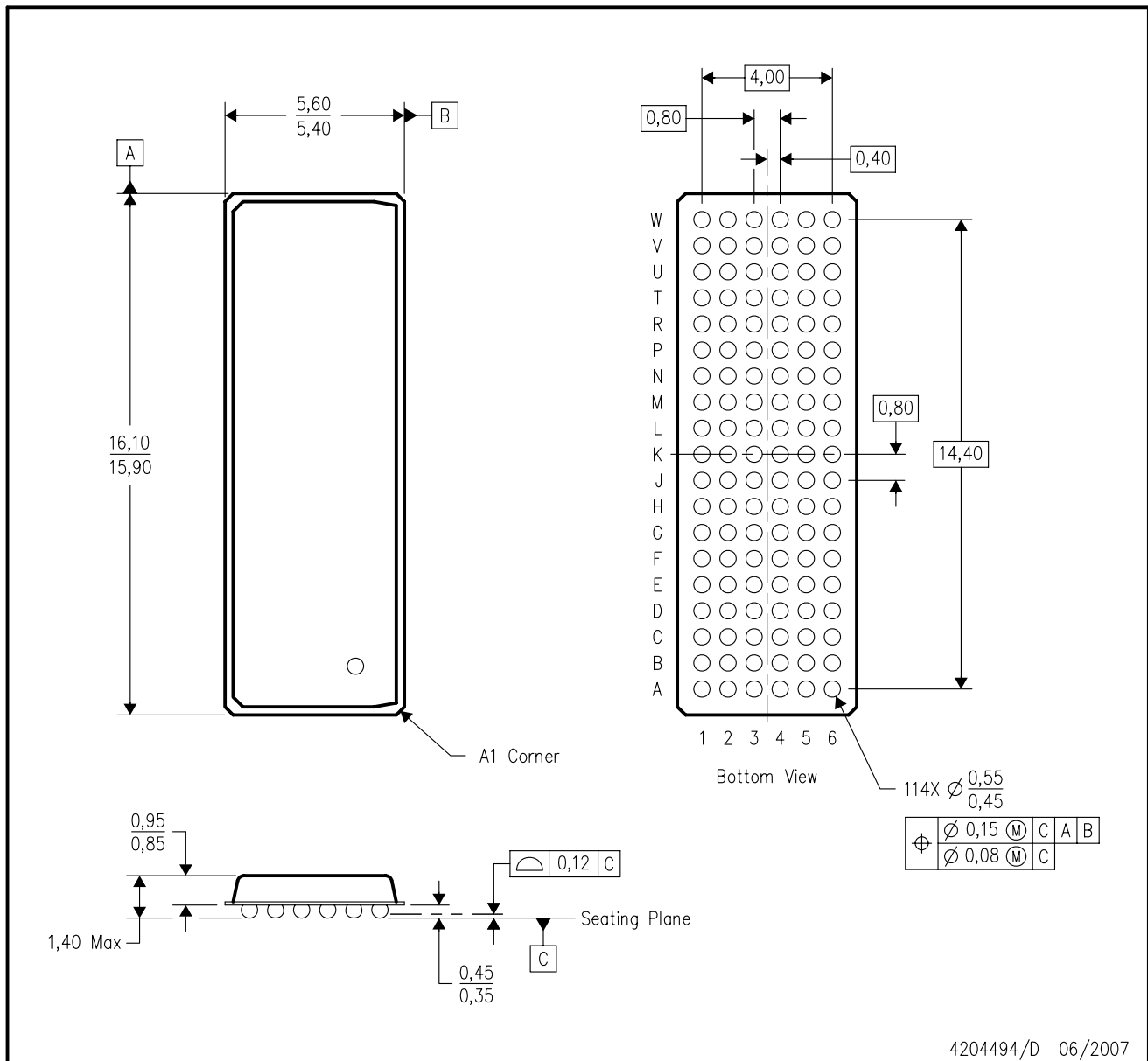


*All dimensions are nominal

Device	Package Type	Package Drawing	Pins	SPQ	Length (mm)	Width (mm)	Height (mm)
CF4320HZKFR	LFBGA	ZKF	114	1000	336.6	336.6	41.3

ZKF (R-PBGA-N114)

PLASTIC BALL GRID ARRAY



4204494/D 06/2007

- NOTES:
- A. All linear dimensions are in millimeters. Dimensioning and tolerancing per ASME Y14.5M-1994.
 - B. This drawing is subject to change without notice.
 - C. Falls within JEDEC MO-205 variation DC.
 - D. This package is lead-free. Refer to the 114 GKF package (drawing 4188954) for tin-lead (SnPb).

IMPORTANT NOTICE

Texas Instruments Incorporated (TI) reserves the right to make corrections, enhancements, improvements and other changes to its semiconductor products and services per JESD46, latest issue, and to discontinue any product or service per JESD48, latest issue. Buyers should obtain the latest relevant information before placing orders and should verify that such information is current and complete.

TI's published terms of sale for semiconductor products (<http://www.ti.com/sc/docs/stdterms.htm>) apply to the sale of packaged integrated circuit products that TI has qualified and released to market. Additional terms may apply to the use or sale of other types of TI products and services.

Reproduction of significant portions of TI information in TI data sheets is permissible only if reproduction is without alteration and is accompanied by all associated warranties, conditions, limitations, and notices. TI is not responsible or liable for such reproduced documentation. Information of third parties may be subject to additional restrictions. Resale of TI products or services with statements different from or beyond the parameters stated by TI for that product or service voids all express and any implied warranties for the associated TI product or service and is an unfair and deceptive business practice. TI is not responsible or liable for any such statements.

Buyers and others who are developing systems that incorporate TI products (collectively, "Designers") understand and agree that Designers remain responsible for using their independent analysis, evaluation and judgment in designing their applications and that Designers have full and exclusive responsibility to assure the safety of Designers' applications and compliance of their applications (and of all TI products used in or for Designers' applications) with all applicable regulations, laws and other applicable requirements. Designer represents that, with respect to their applications, Designer has all the necessary expertise to create and implement safeguards that (1) anticipate dangerous consequences of failures, (2) monitor failures and their consequences, and (3) lessen the likelihood of failures that might cause harm and take appropriate actions. Designer agrees that prior to using or distributing any applications that include TI products, Designer will thoroughly test such applications and the functionality of such TI products as used in such applications.

TI's provision of technical, application or other design advice, quality characterization, reliability data or other services or information, including, but not limited to, reference designs and materials relating to evaluation modules, (collectively, "TI Resources") are intended to assist designers who are developing applications that incorporate TI products; by downloading, accessing or using TI Resources in any way, Designer (individually or, if Designer is acting on behalf of a company, Designer's company) agrees to use any particular TI Resource solely for this purpose and subject to the terms of this Notice.

TI's provision of TI Resources does not expand or otherwise alter TI's applicable published warranties or warranty disclaimers for TI products, and no additional obligations or liabilities arise from TI providing such TI Resources. TI reserves the right to make corrections, enhancements, improvements and other changes to its TI Resources. TI has not conducted any testing other than that specifically described in the published documentation for a particular TI Resource.

Designer is authorized to use, copy and modify any individual TI Resource only in connection with the development of applications that include the TI product(s) identified in such TI Resource. NO OTHER LICENSE, EXPRESS OR IMPLIED, BY ESTOPPEL OR OTHERWISE TO ANY OTHER TI INTELLECTUAL PROPERTY RIGHT, AND NO LICENSE TO ANY TECHNOLOGY OR INTELLECTUAL PROPERTY RIGHT OF TI OR ANY THIRD PARTY IS GRANTED HEREIN, including but not limited to any patent right, copyright, mask work right, or other intellectual property right relating to any combination, machine, or process in which TI products or services are used. Information regarding or referencing third-party products or services does not constitute a license to use such products or services, or a warranty or endorsement thereof. Use of TI Resources may require a license from a third party under the patents or other intellectual property of the third party, or a license from TI under the patents or other intellectual property of TI.

TI RESOURCES ARE PROVIDED "AS IS" AND WITH ALL FAULTS. TI DISCLAIMS ALL OTHER WARRANTIES OR REPRESENTATIONS, EXPRESS OR IMPLIED, REGARDING RESOURCES OR USE THEREOF, INCLUDING BUT NOT LIMITED TO ACCURACY OR COMPLETENESS, TITLE, ANY EPIDEMIC FAILURE WARRANTY AND ANY IMPLIED WARRANTIES OF MERCHANTABILITY, FITNESS FOR A PARTICULAR PURPOSE, AND NON-INFRINGEMENT OF ANY THIRD PARTY INTELLECTUAL PROPERTY RIGHTS. TI SHALL NOT BE LIABLE FOR AND SHALL NOT DEFEND OR INDEMNIFY DESIGNER AGAINST ANY CLAIM, INCLUDING BUT NOT LIMITED TO ANY INFRINGEMENT CLAIM THAT RELATES TO OR IS BASED ON ANY COMBINATION OF PRODUCTS EVEN IF DESCRIBED IN TI RESOURCES OR OTHERWISE. IN NO EVENT SHALL TI BE LIABLE FOR ANY ACTUAL, DIRECT, SPECIAL, COLLATERAL, INDIRECT, PUNITIVE, INCIDENTAL, CONSEQUENTIAL OR EXEMPLARY DAMAGES IN CONNECTION WITH OR ARISING OUT OF TI RESOURCES OR USE THEREOF, AND REGARDLESS OF WHETHER TI HAS BEEN ADVISED OF THE POSSIBILITY OF SUCH DAMAGES.

Unless TI has explicitly designated an individual product as meeting the requirements of a particular industry standard (e.g., ISO/TS 16949 and ISO 26262), TI is not responsible for any failure to meet such industry standard requirements.

Where TI specifically promotes products as facilitating functional safety or as compliant with industry functional safety standards, such products are intended to help enable customers to design and create their own applications that meet applicable functional safety standards and requirements. Using products in an application does not by itself establish any safety features in the application. Designers must ensure compliance with safety-related requirements and standards applicable to their applications. Designer may not use any TI products in life-critical medical equipment unless authorized officers of the parties have executed a special contract specifically governing such use. Life-critical medical equipment is medical equipment where failure of such equipment would cause serious bodily injury or death (e.g., life support, pacemakers, defibrillators, heart pumps, neurostimulators, and implantables). Such equipment includes, without limitation, all medical devices identified by the U.S. Food and Drug Administration as Class III devices and equivalent classifications outside the U.S.

TI may expressly designate certain products as completing a particular qualification (e.g., Q100, Military Grade, or Enhanced Product). Designers agree that it has the necessary expertise to select the product with the appropriate qualification designation for their applications and that proper product selection is at Designers' own risk. Designers are solely responsible for compliance with all legal and regulatory requirements in connection with such selection.

Designer will fully indemnify TI and its representatives against any damages, costs, losses, and/or liabilities arising out of Designer's non-compliance with the terms and provisions of this Notice.

Looking for pricing, stock, or lifecycle information?

Click below to explore more details on WIN SOURCE:

 [View CF4320HZKFR on WIN SOURCE](#)

 [Texas Instruments](#) Information

Optimize Your Supply Chain with WIN SOURCE Solutions

-  Global Sourcing Solution
-  Obsolete Management
-  Cost Control Management
-  Shortage Management
-  Alternative Solution
-  Excess Inventory Management