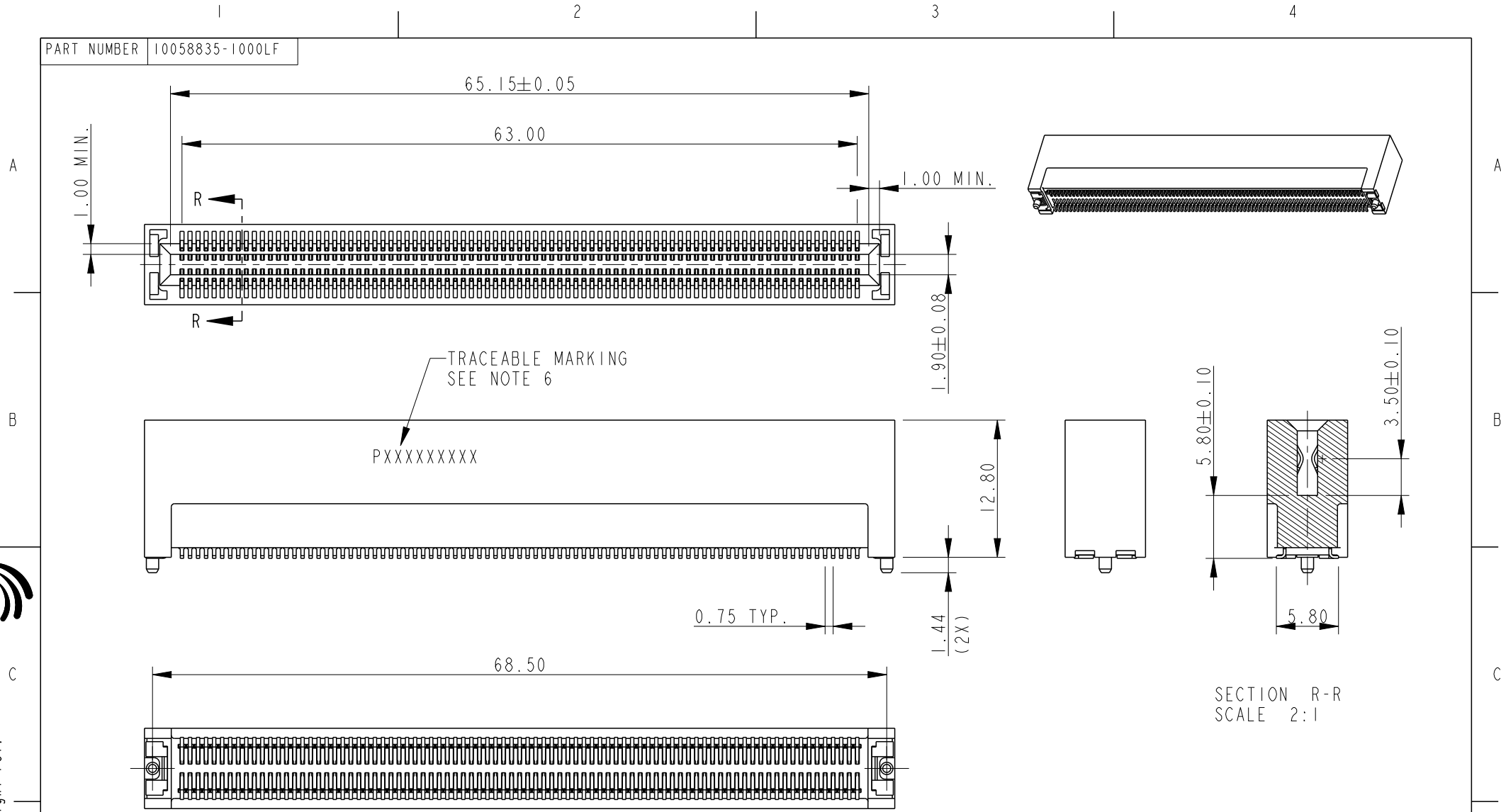




**THE DATASHEET OF
10058835-1000LF**



PART NUMBER 10058835-1000LF



Copyright FCI.

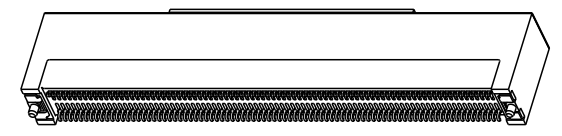
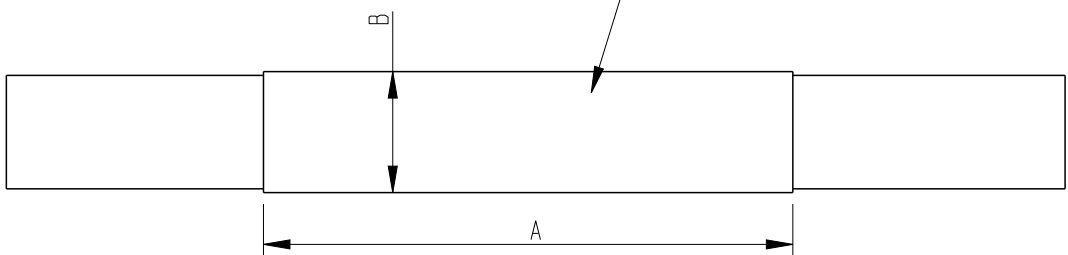
spec ref *		dr w wcadmin 2006/08/30		projection		size A4		scale 1:1															
tolerance std ASME Y14.5		eng Wei Yang 2014/08/27						ecn no ELX-DG-18450-1															
TOLERANCES UNLESS OTHERWISE SPECIFIED		chr Terry Qiu 2014/09/17						rel level Released															
ASME Y14.5		appr Pei-Ming Zheng 2014/09/19		product family		dwg no 10058835		rev H															
surface ✓		<table border="1"> <tr> <td>linear</td> <td>0.X</td> <td>±0.3</td> </tr> <tr> <td></td> <td>0.XX</td> <td>±0.20</td> </tr> <tr> <td></td> <td>0.XXX</td> <td>±0.100</td> </tr> <tr> <td>angular</td> <td>0°</td> <td>±2°</td> </tr> </table>		linear	0.X	±0.3		0.XX	±0.20		0.XXX	±0.100	angular	0°	±2°			title SMT TYPE ASS'Y MICRO TCA		Product - Customer Drw		sheet 1 of 6	
linear	0.X	±0.3																					
	0.XX	±0.20																					
	0.XXX	±0.100																					
angular	0°	±2°																					
ASME Y14.5		www.fci.com		cat. no. *		STATUS:Released		Printed: Sep 19, 2014															

PrdE File - REV C - 2009-06-09

PART NUMBER	10058835-1001LF
	10058835-1003LF

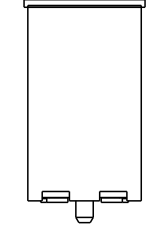
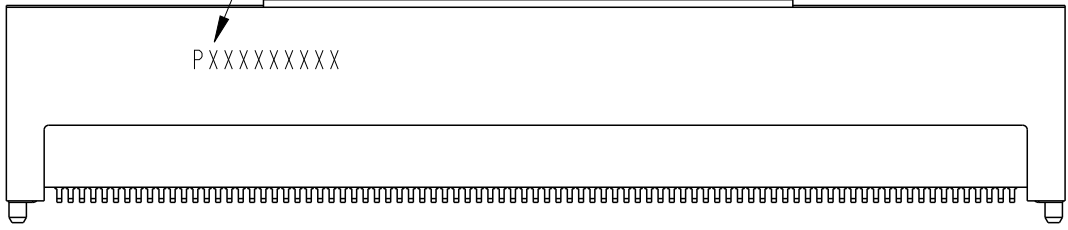


MYLAR FOR PLACE AND PICK
THICKNESS 0.12MM



TRACEABLE MARKING
SEE NOTE 6

PXXXXXXXXX



PART NUMBER	DIM "A"±0.5	DIM "B"±0.3
10058835-1001LF	35	8.0
10058835-1003LF	22	7.0

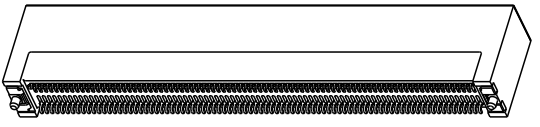
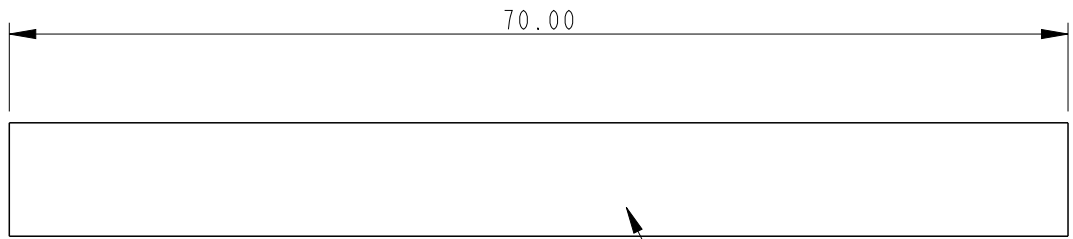
NOTE: ALL THE CONNECTOR DIMENSIONS REFER TO PART NUMBER 10058835-1000LF

spec ref	*	dr	w wadmin	2006/08/30	projection 	MM ←→	size	A4	scale	1:1
tolerance std	TOLERANCES UNLESS OTHERWISE SPECIFIED	eng	Wei Yang	2014/08/27			ecn no	ELX-DG-18450-1		
ASME Y14.5		chr	Terry Qiu	2014/09/17				rel level	Released	
surface	linear	appr	Pei-Ming Zheng	2014/09/19	product family		rev			
ASME Y14.5		angular	www.fci.com		cat. no. *			10058835	H	
					Product - Customer Drw		sheet 2 of 6			

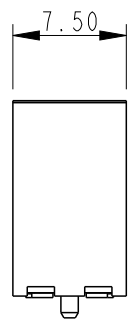
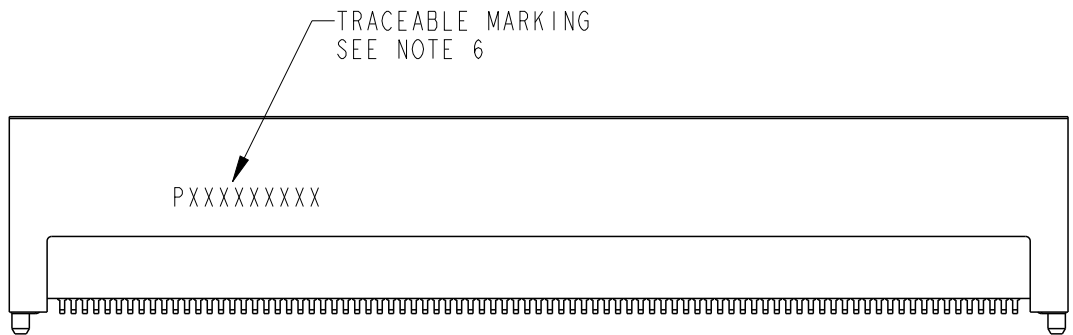


Copyright FCI.

PART NUMBER 10058835-1002LF



MYLAR FOR PLACE AND PICK THICKNESS 0.12MM



NOTE: ALL THE CONNECTOR DIMENSIONS REFER TO PART NUMBER 10058835-1000LF

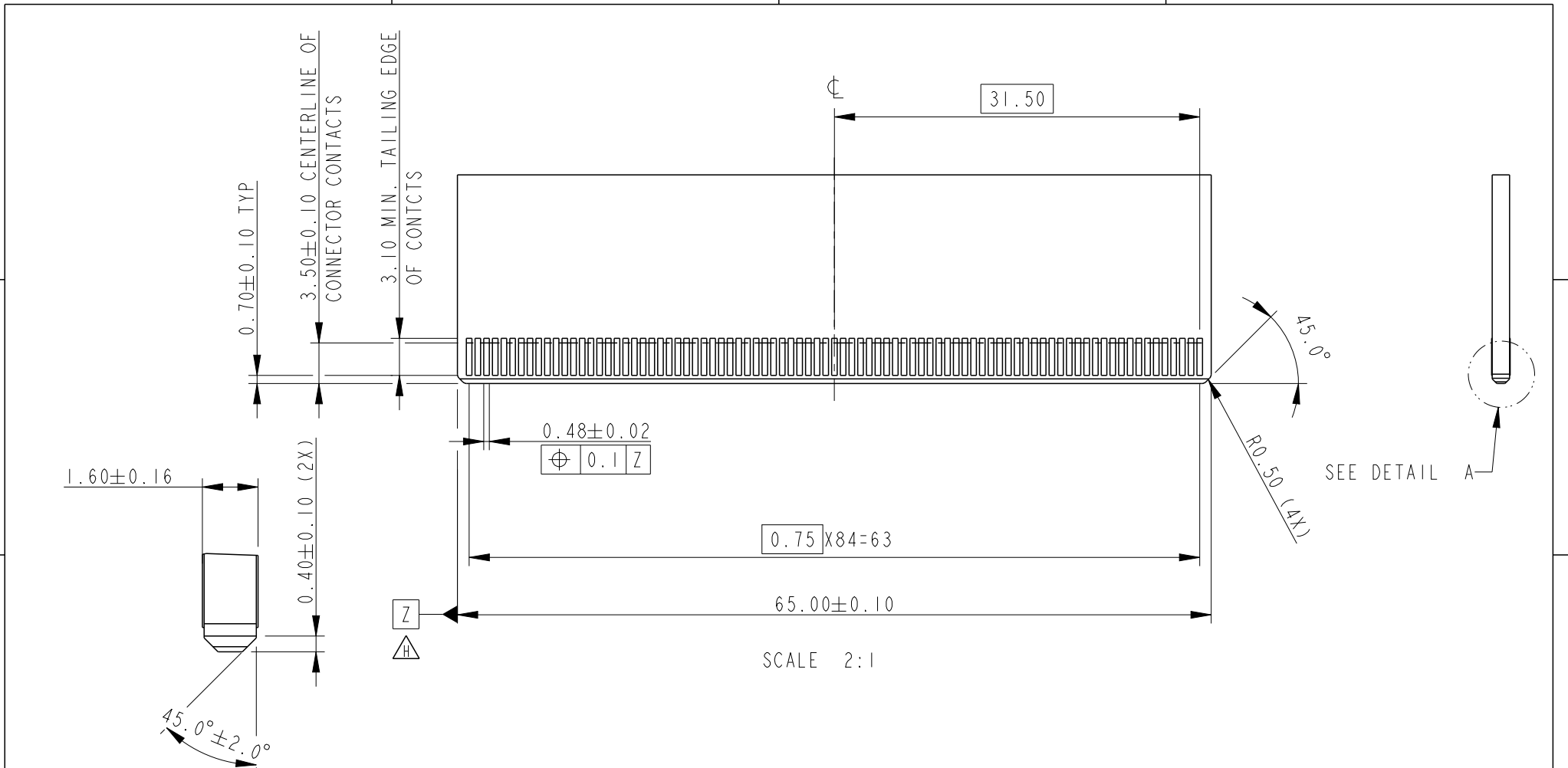


spec ref *		dr w wcadmin		2006/08/30	projection 	MM ←→	size A4	scale 1:1
tolerance std ASME Y14.5		eng Wei Yang		2014/08/27			ecn no ELX-DG-18450-1	
-		chr Terry Qiu		2014/09/17			rel level Released	
surface ✓		appr Pei-Ming Zheng		2014/09/19	product family		rev	
ASME Y14.5		linear	0.X ±0.3	title SMT TYPE ASS'Y MICRO TCA		dwg no 10058835		H
			0.XX ±0.20					
			0.XXX ±0.100					
		angular	0° ±2°	www.fci.com		cat. no. *		Product - Customer Drw
						sheet 3 of 6		

Pro/E File - REV C - 2009-06-09



Copyright FCI.



DETAIL A
SCALE 6:1

RECOMMENDED MODULE LAYOUT
(SEE PICMG ADVANCED MEZZANINE CRAD BASE SPECIFICATION FOR DETAIL)

SCALE 2:1

spec ref	*	dr	w wcadmin	2006/08/30	projection	MM	size	A4	scale	1:1
tolerance std	ASME Y14.5	eng	Wei Yang	2014/08/27			ecn no		ELX-DG-18450-1	
TOLERANCES UNLESS OTHERWISE SPECIFIED		chr	Terry Qiu	2014/09/17			rel level		Released	
surface	✓	appr	Pei-Ming Zheng	2014/09/19	product family		3G10		rev	
ASME Y14.5	linear			title		SMT TYPE ASS'Y		dwg no		10058835
		www.fci.com		cat. no.		Product - Customer Drw		sheet 5 of 6		H
	angular									
		0.X	±0.3							
		0.XX	±0.20							
		0.XXX	±0.100							
		0°	±2°							

Pro/E File - REV C - 2009-06-09

NOTES:

1. MATERIAL:

HOUSING: HIGH TEMPERATURE, GLASS FILLED UL94V-0 RATED.

TERMINAL: COPPER ALLOY

PLATING: 1.27um NICKEL UNDERPLATE ALL OVER

CONTACT AREA PLATING - SEE PRODUCT NUMBER CODE

SOLDER TAIL: MAT TIN - 2.54um MIN.

SEE PRODUCT NUMBER CODE

2. PRODUCT SPECIFICATION: GS-12-362

3. PACKING SPECIFICATION: GS-14-1047

4. RoHS COMPATIBLE PRODUCT SPECIFICATIONS

a-PLATING:

- "LF" MEANS THE PRODUCT IS LEAD-FREE, 2um MINIMUM MATTE TIN OVER 1.27um MINIMUM NICKEL UNDERPLATE.

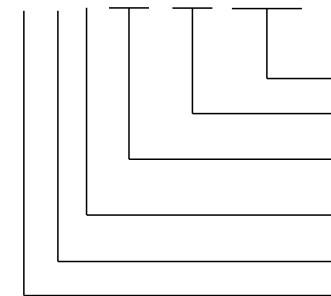
b-MANUFACTURING PROCESS COMPATIBILITY

- THE HOUSING WILL WITHSTAND EXPOSURE TO 260°C±5°C SOLDER BATH TEMPERATURE FOR 5 SECONDS IN A REFLOW SOLDER APPLICATION WITH A 1.6mm MIN THICK CIRCUIT BOARD.

△ 5. A △ SYMBOL WILL BE NEXT TO ANY DIMENSION, VIEW, OR NOTE WHICH HAS BEEN MODIFIED WITH THE CURRENT DRAWING REVISION.

6. MARKING INFORMATION:

P X X X X X X X X



PRODUCTION LINE CODE

DATE CODE THROUGH 01 TO 31

WEEK NUMBER 01 THROUGH 53

YEAR CODE:
MOST RIGHT OF DIGIT OF PRODUCTION.
(e.g 2007=7)

MANUFACTURE SITE; 2 FOR DONGGUAN

SOURCE, P FOR CHINA

HEIGHT OF THE MAKING TEXT: IMM MIN

PRODUCT NUMBER CODE
10058835 - X X X X L F

HOUSING COLOR OPTIONS
1-BLACK
2-WHITE

PEGS OPTIONS
0-PLASTIC PEGS

TERMINAL PLATING OPTIONS
0-0.76um Au CONTACT AREA

LEAD FREE

RESERVE

- 0-----WITHOUT MYLAR
- 1-----WITH MYLAR(35X8.0)
- 2-----WITH MYLAR(70X7.5)
- △ 3-----WITH MYLAR(22X7.0)



Copyright FCI.

spec ref *		dr w cadmin		2006/08/30		projection		size A4		scale 1:1	
tolerance std ASME Y14.5		eng Wei Yang		2014/08/27						ecn no ELX-DG-18450-1	
-		chr Terry Qiu		2014/09/17						rel level Released	
surface ✓		appr Pei-Ming Zheng		2014/09/19		product family 3G10		dwg no 10058835		rev H	
ASME Y14.5		www.fci.com		cat. no. *		Product - Customer Drw		sheet 6 of 6			
TOLERANCES UNLESS OTHERWISE SPECIFIED		linear		0.X ±0.3		0.XX ±0.20		0.XXX ±0.100		angular 0° ±2°	

Looking for pricing, stock, or lifecycle information?

Click below to explore more details on WIN SOURCE:

 [View 10058835-1000LF on WIN SOURCE](#)

 [Amphenol FCI Information](#)

Optimize Your Supply Chain with WIN SOURCE Solutions

-  Global Sourcing Solution
-  Obsolete Management
-  Cost Control Management
-  Shortage Management
-  Alternative Solution
-  Excess Inventory Management