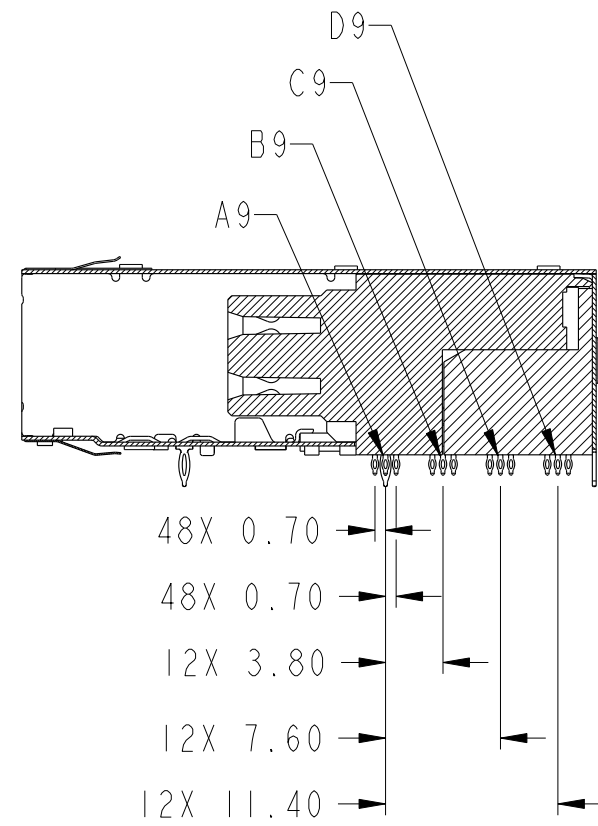
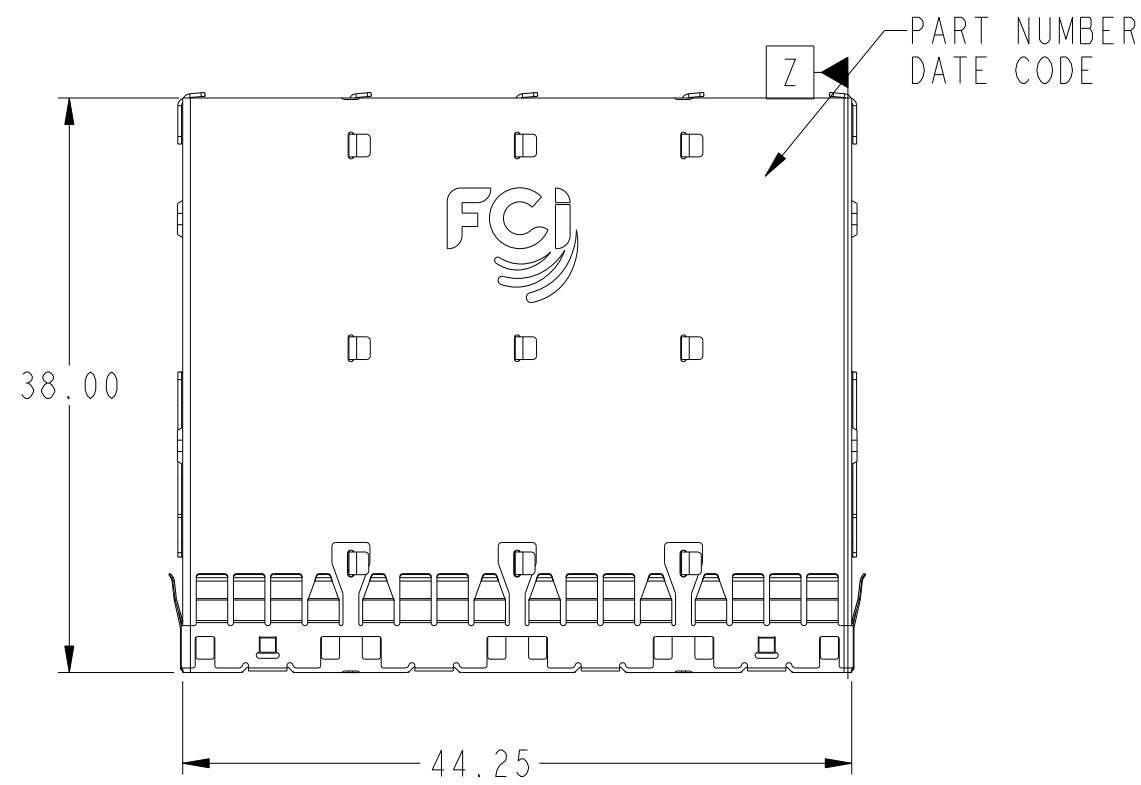




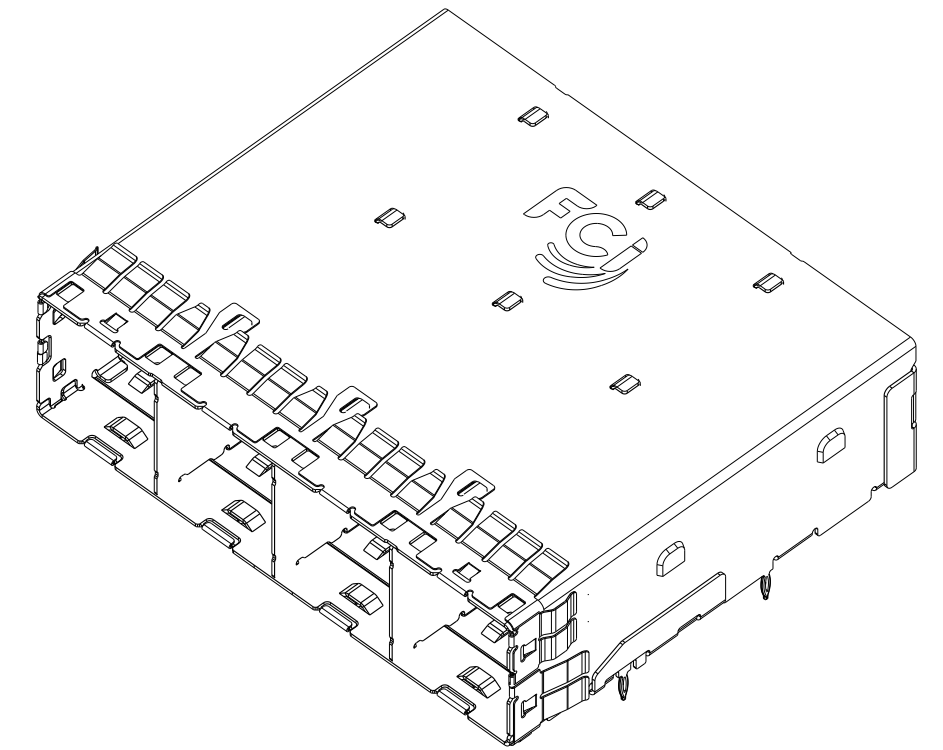
**THE DATASHEET OF**  
**10112628-101LF**



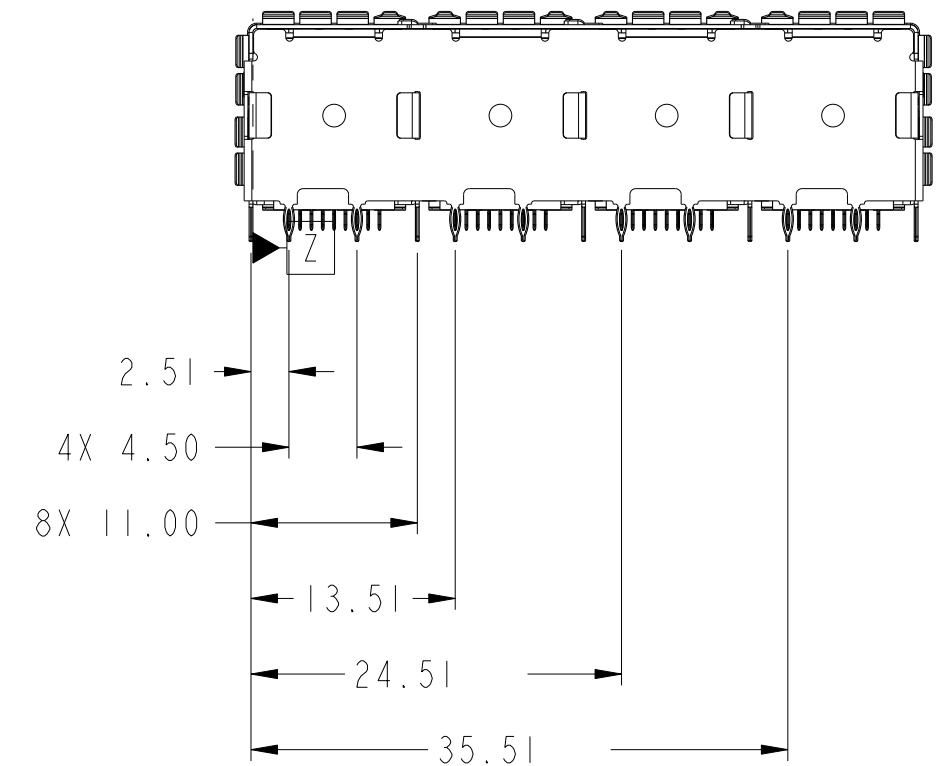
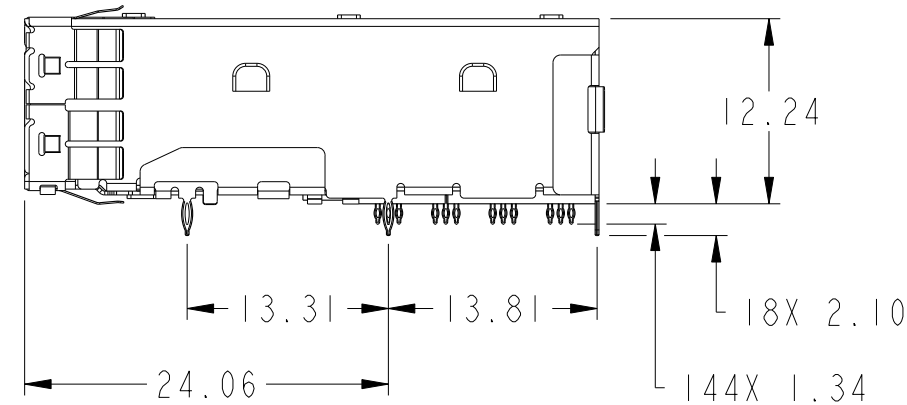
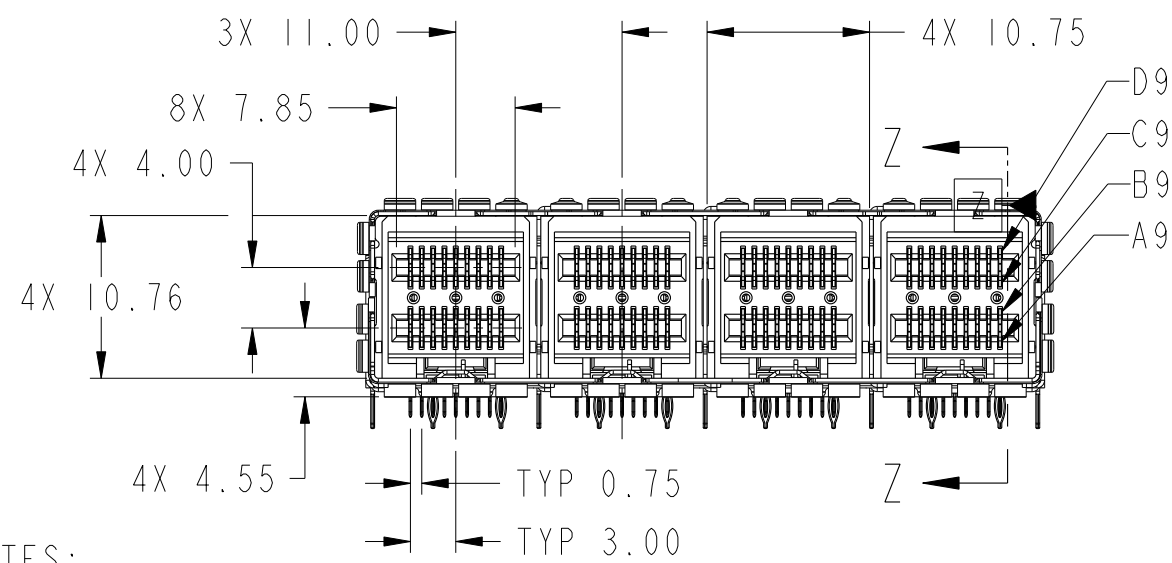
PRODUCT NUMBER	TAIL PLATING OPTION, SEE NOTE 2	DESCRIPTION
10112628-101	OPTION 1	WITHOUT STOPS
10112628-101LF	OPTION 2	WITHOUT STOPS
10112628-102	OPTION 1	WITH STOPS
10112628-102LF	OPTION 2	WITH STOPS



SECTION Z-Z  
SCALE 2:1



10112628-101 & 101LF  
WITHOUT STOPS



NOTES:

- MATERIALS:**  
CONNECTOR HOUSING: HIGH TEMPERATURE THERMOPLASTIC  
GLASS FILLED, UL 94V-0  
EMI CAGE: NICKEL SILVER ALLOY  
EMI FINGERS: COPPER ALLOY  
TERMINALS: COPPER ALLOY
- FINISHES:**  
EMI FINGERS: 0.50µm MIN NICKEL  
CONTACT AREA: 0.76µm MIN GOLD OVER 2.54µm MIN NICKEL  
TAIL AREA:  
OPTION 1: 0.76µm - 1.52µm TIN/LEAD (90/10) OVER 2.54µm MIN NICKEL  
OPTION 2: 0.76µm - 1.52µm TIN (LEAD FREE) OVER 2.54µm MIN NICKEL
- PRODUCT SPECIFICATION:** GS-12-651  
**APPLICATION SPECIFICATION:** GS-20-0327
- MOUNTING HARDWARE:** M2X0.4 BUTTON HEAD SCREW  
MOUNTING SCREW LENGTH: BOARD THICKNESS + 1.4mm MAX (0.9mm MIN).  
4 REQUIRED PER ASSEMBLY
- THIS CONNECTOR IS DESIGNED TO MEET THE REQUIREMENTS OF INDUSTRY SPECIFICATION SFF-8644.

6. THE USE OF A PCI BRACKET OR EQUIVALENT IS REQUIRED FOR THIS PRODUCT

7. A  $\triangle$  SYMBOL WILL BE NEXT TO ANY DIMENSION, VIEW OR NOTE THAT HAVE BEEN MODIFIED WITH THE CURRENT DRAWING REVISION.

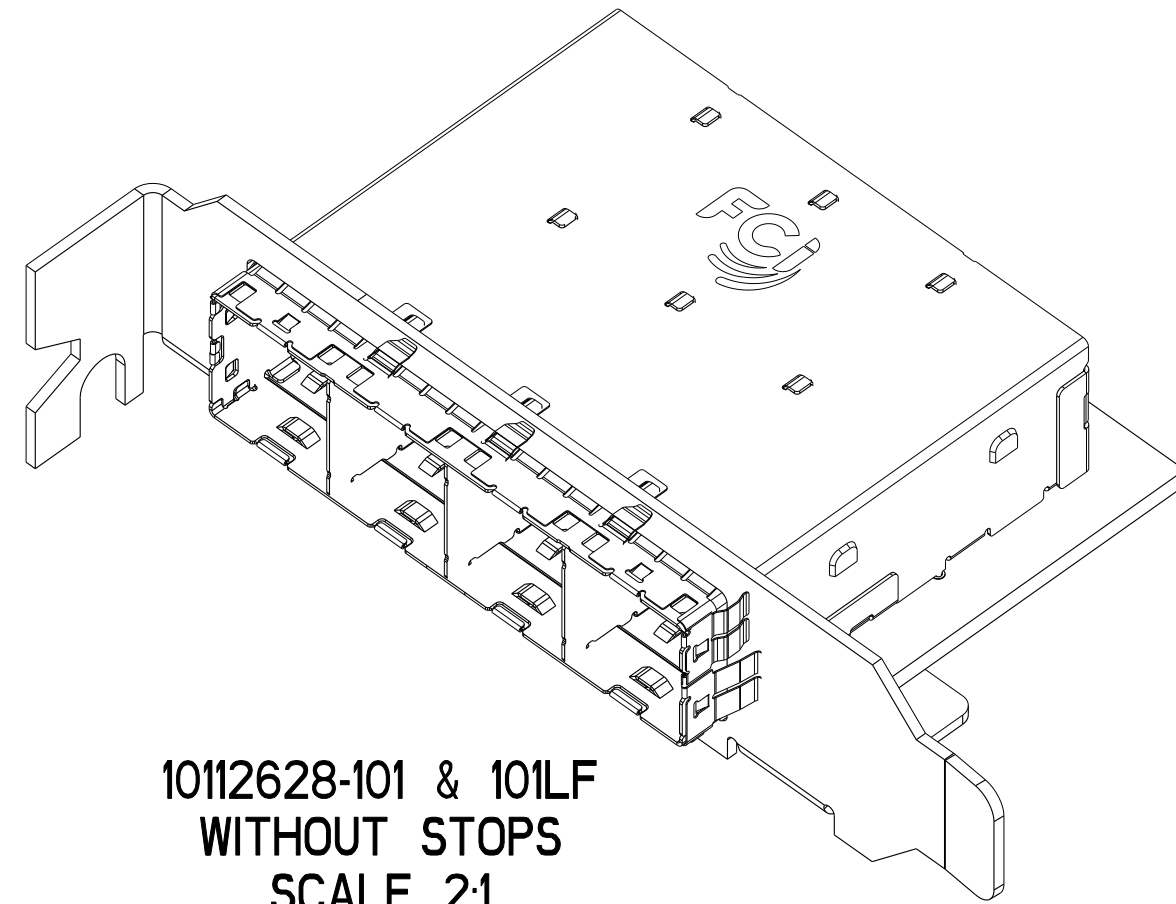
MATES WITH  
MINI-SAS HD ENDS IN:

10112041 SERIES (4X)
10117771 SERIES (4X)
10117946 SERIES (4X)
10117949 SERIES (4X)
10117947 SERIES (8X)
10112359 SERIES (8X)
10117950 SERIES (8X)
10117948 SERIES (8X)

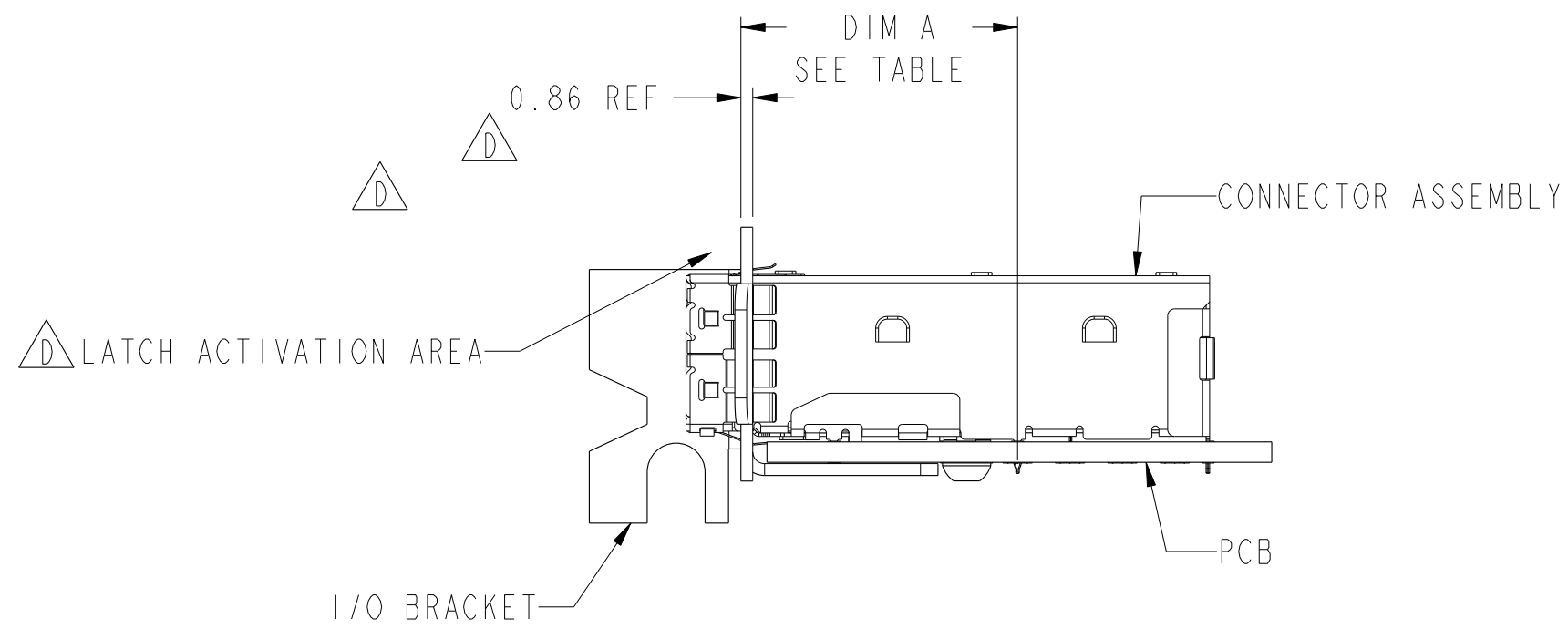
spec ref	-	dr	Mark Gray	2010/08/04	projection	MM	size	A2	scale	4:1
tolerance std	ASME Y14.5	eng	David Humbert	2012/06/27	chr	-	ecn no	-	ELX-V-012039-1	
	TOLERANCES UNLESS OTHERWISE SPECIFIED	appr	Brad Brubaker	2012/06/27	product family	-	rel level	-	Released	
surface	linear	0.X	±0.25	FCI	1x4 EXTERNAL ASSEMBLY		dwg no	10112628	rev	D
		0.XX	±0.13		MINI-SAS HD					
		0.XXX	±		www.fci.com cat. no.					
ASME Y14.5	angular	0°	±1/2°	Product - Customer Drw		sheet 1 of 7				

APPLICATION	DIM A
PCI ADD-IN CARD	19.00 ± 0.15
ALL OTHER APPLICATIONS	20.08 ± 0.15

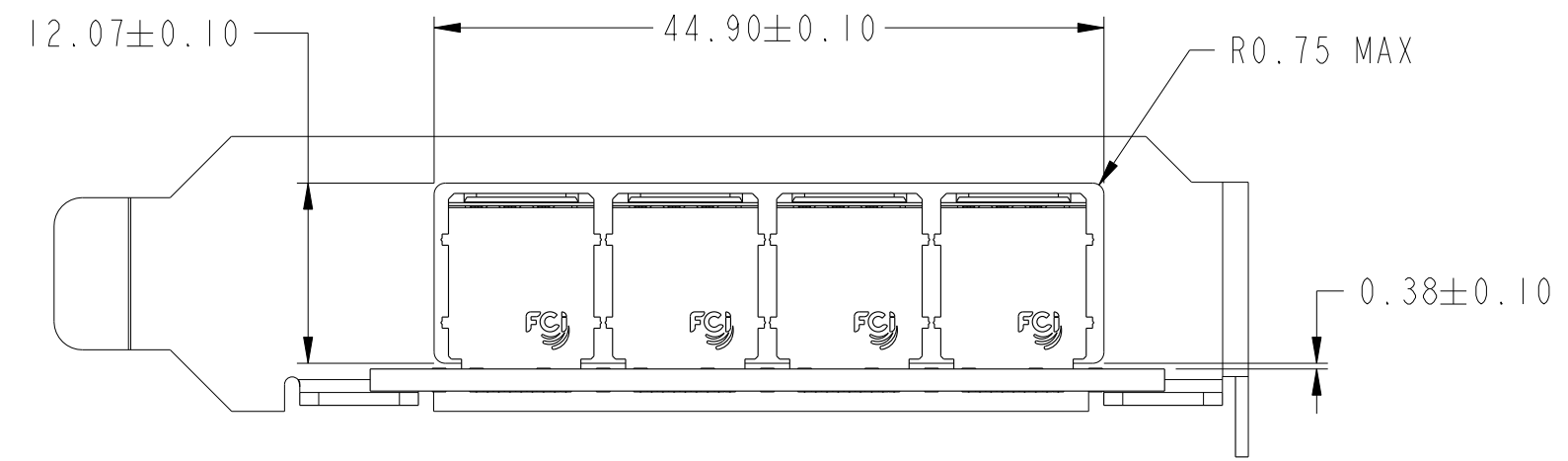
I/O BRACKET CUT OUT  
(BRACKET NOT SUPPLIED)  
SEE NOT 6



10112628-101 & 101LF  
WITHOUT STOPS  
SCALE 2:1



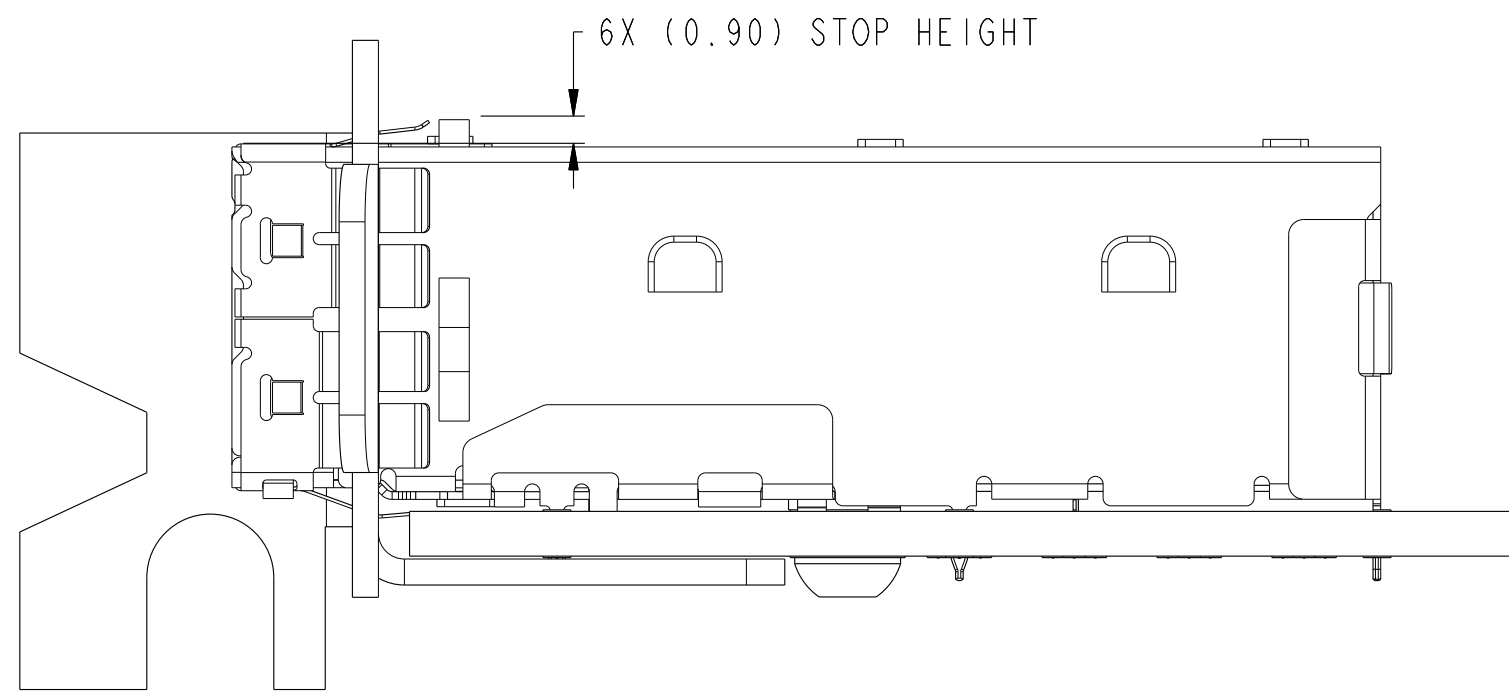
ASSEMBLED VIEW  
WITHOUT STOPS  
SCALE 2:1



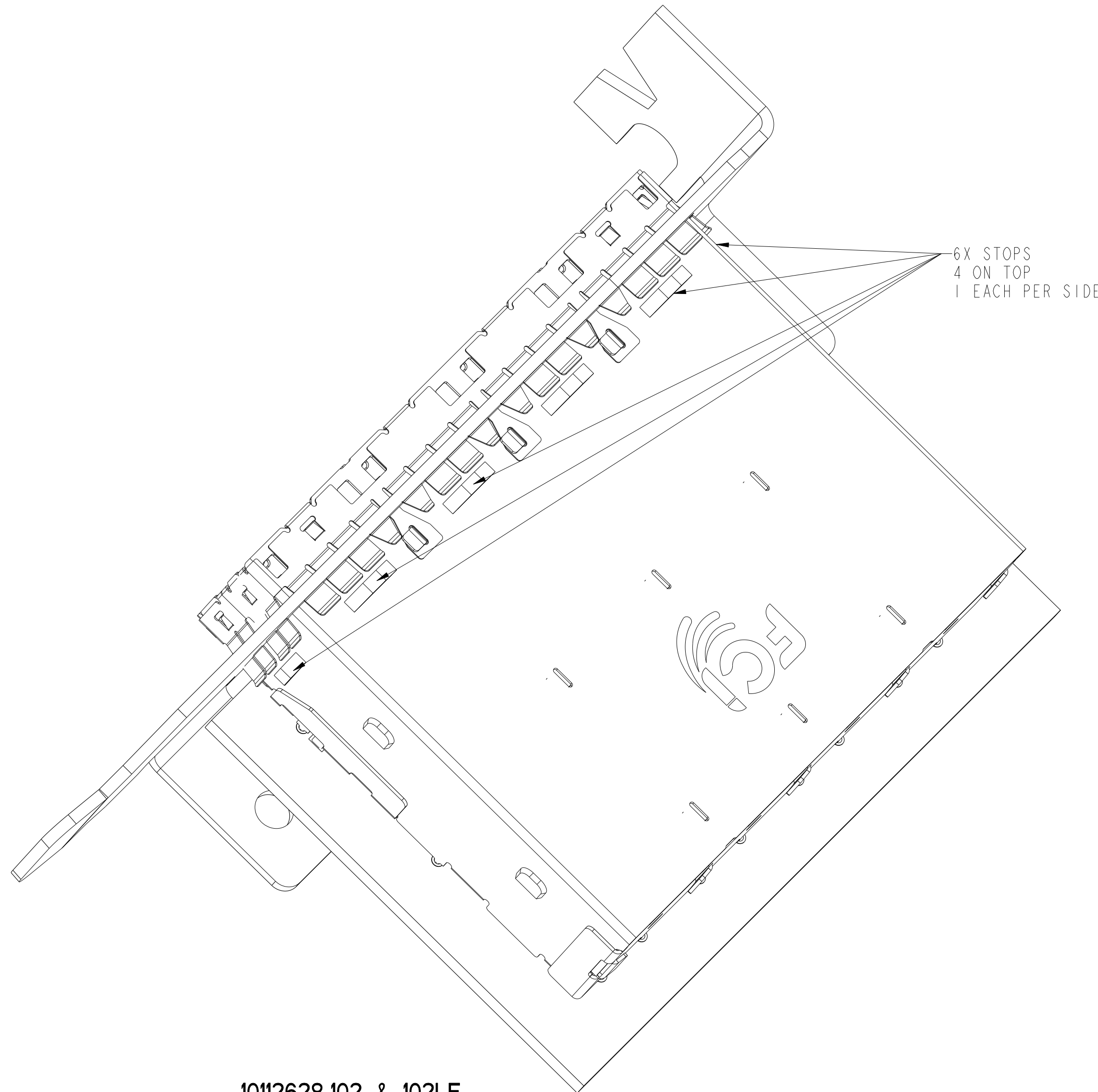
spec ref	-	dr	Mark Gray	2010/08/04	projection	MM	size	A2	scale	12:1									
tolerance std	ASME Y14.5	eng	David Humbert	2012/06/27			ecn no	ELX-V-012039-1											
TOLERANCES UNLESS OTHERWISE SPECIFIED		chr	-	appr			Brad Brubaker	2012/06/27	product family	-	rel level	Released							
surface	<table border="1"> <tr> <td>linear</td> <td>0.X</td> <td>±0.25</td> </tr> <tr> <td></td> <td>0.XX</td> <td>±0.13</td> </tr> <tr> <td></td> <td>0.XXX</td> <td>±</td> </tr> <tr> <td>angular</td> <td>0°</td> <td>±1/2°</td> </tr> </table>	linear	0.X	±0.25				0.XX	±0.13		0.XXX	±	angular	0°	±1/2°			<b>1x4 EXTERNAL ASSEMBLY</b> MINI-SAS HD	
linear	0.X	±0.25																	
	0.XX	±0.13																	
	0.XXX	±																	
angular	0°	±1/2°																	
ASME Y14.5	www.fci.com	cat. no.	-	Product - Customer Drw	sheet 2 of 7														

1 2 3 4 5 6 7 8

A  
B  
C  
D  
E  
F



ASSEMBLED VIEW  
WITH STOPS  
SCALE 4:1



10112628-102 & 102LF  
WITH STOPS  
SCALE 4:1

spec ref	-			dr	Mark Gray	2010/08/04	projection	MM	size	A2	scale	1:1
tolerance std	ASME Y14.5			eng	David Humbert	2012/06/27			ecn no	ELX-V-012039-1		
TOLERANCES UNLESS OTHERWISE SPECIFIED				chr	-	appr			Brad Brubaker	2012/06/27	product family	MINI-SAS HD
surface	<input checked="" type="checkbox"/>	linear	0.X	±0.25		title 1x4 EXTERNAL ASSEMBLY MINI-SAS HD	cat. no.	Product - Customer Drw	sheet 3 of 7	rev D	rev 10112628	
			0.XX	±0.13								
			0.XXX	±								
ASME Y14.5		angular	0°	±1/2°	www.fci.com							

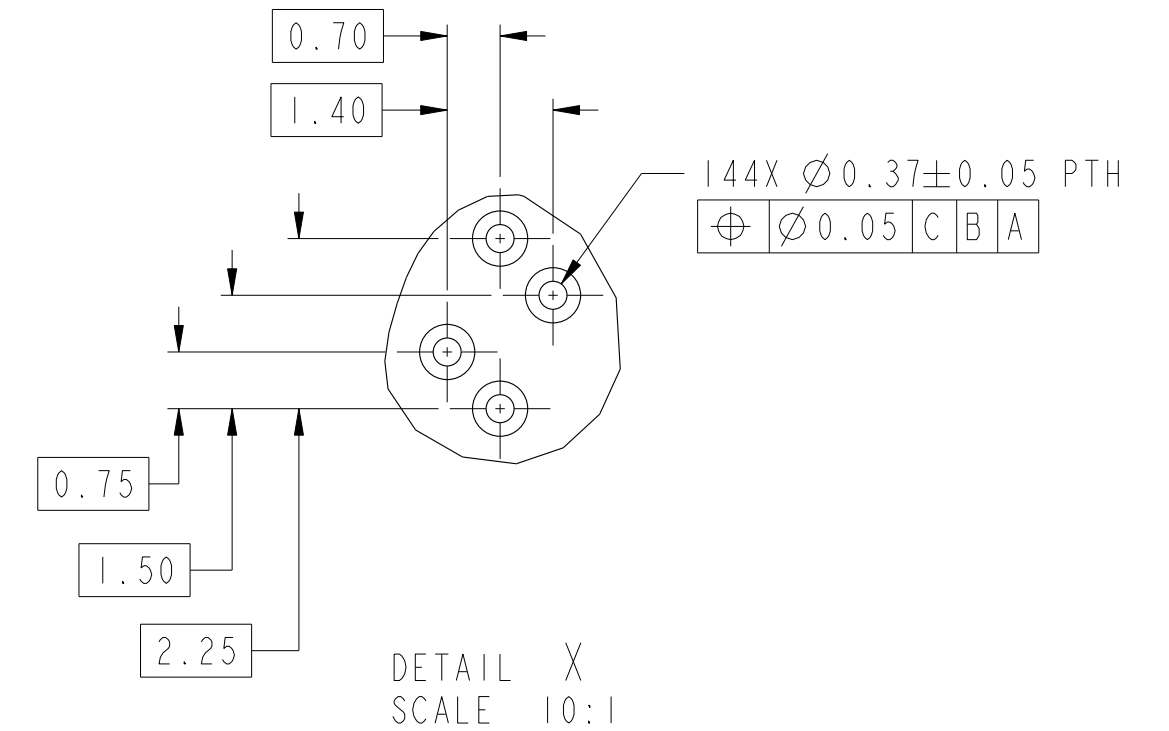
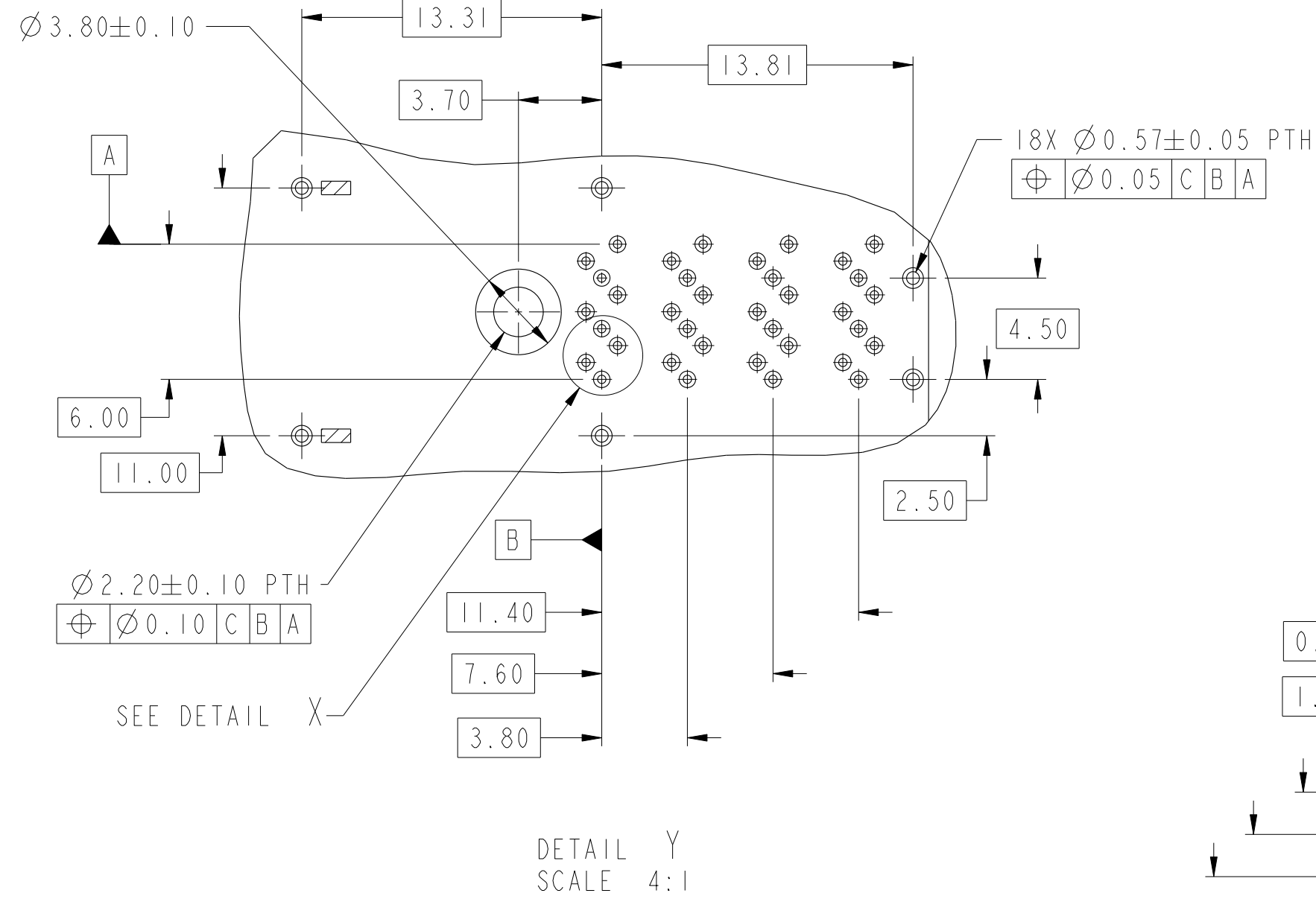
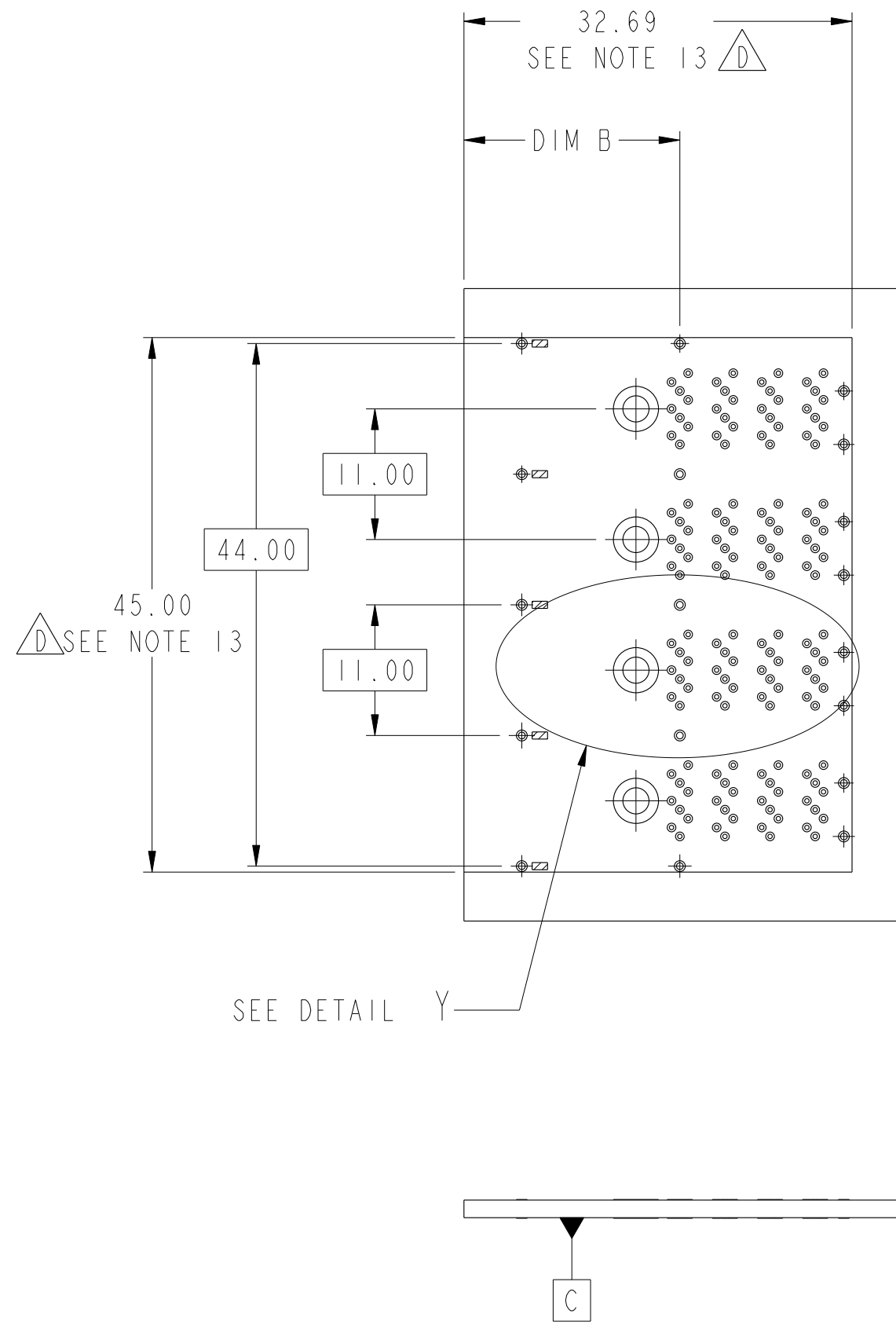


Copyright FCI.

F

APPLICATION	DIM B
PCI ADD-IN CARD	17.10 ± 0.15
ALL OTHER APPLICATIONS	18.19 ± 0.15

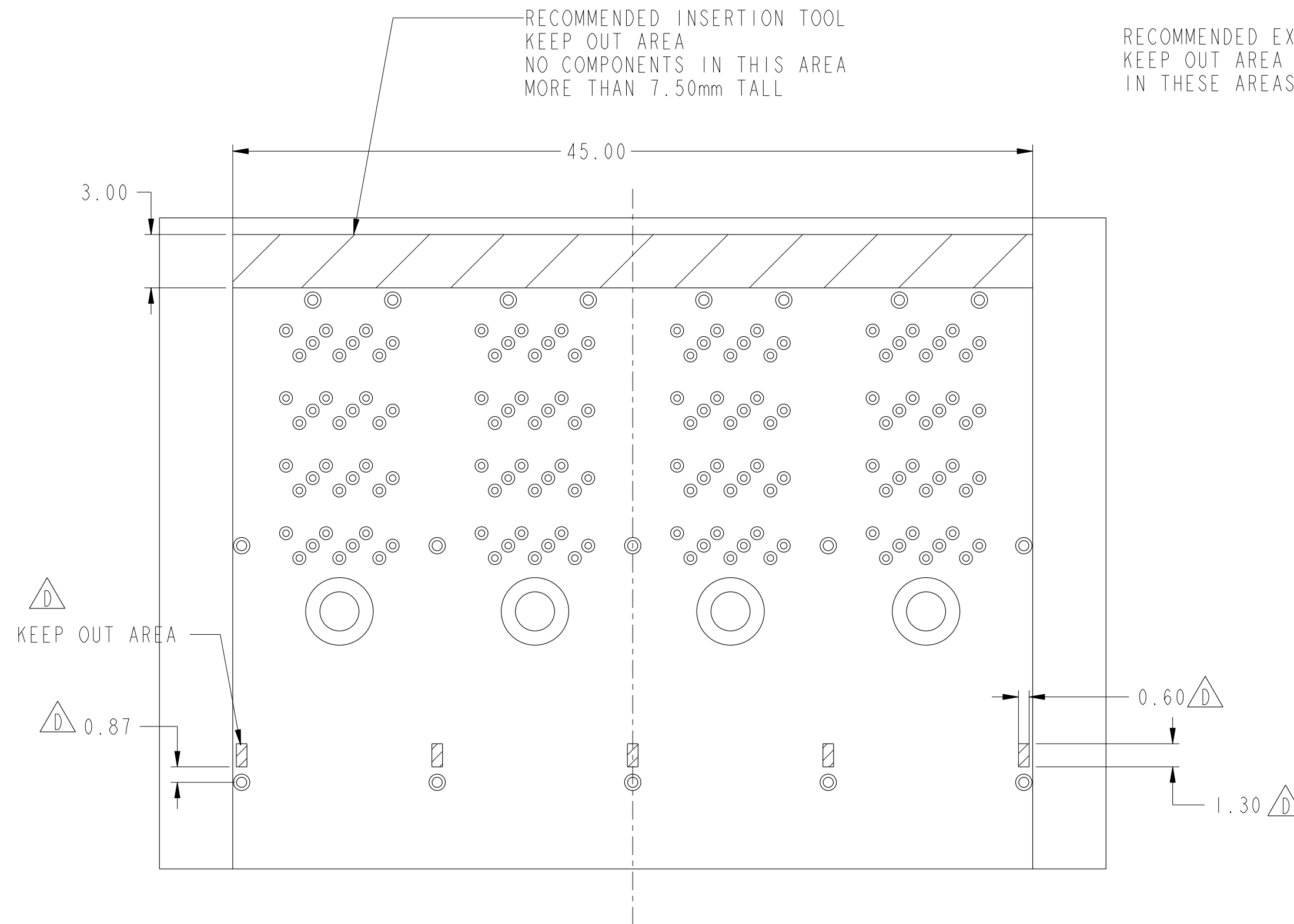
# RECOMMENDED BOARD LAYOUT



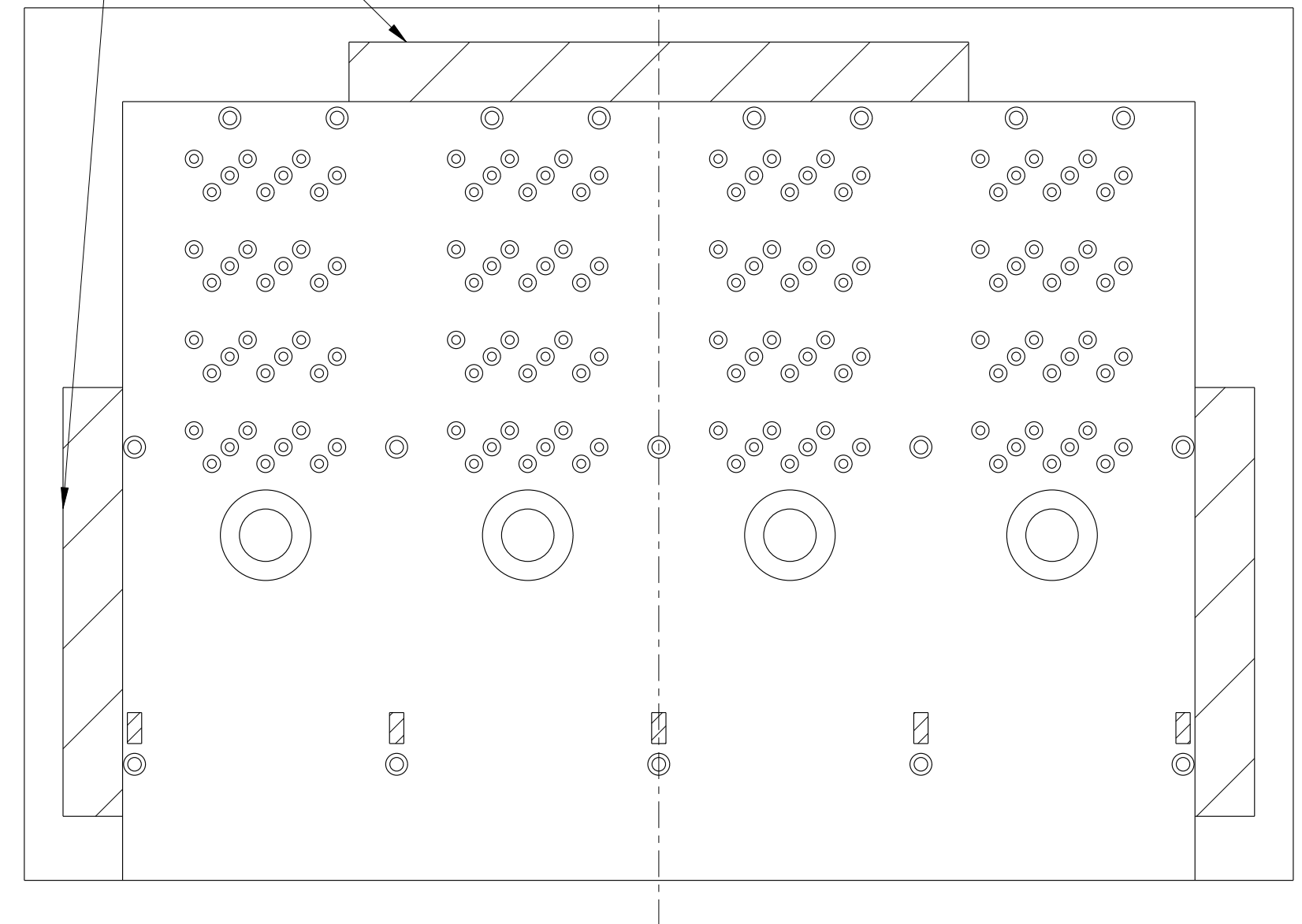
- NOTES:
- RECOMMENDED DRILL SIZE FOR A Ø0.37 FINISHED PTH IS Ø0.457.
  - RECOMMENDED ANNULAR RING AROUND Ø0.37 FINISHED PTH IS Ø0.73.
  - RECOMMENDED DRILL SIZE FOR A Ø0.57 FINISHED PTH IS Ø0.68.
  - RECOMMENDED ANNULAR RING AROUND A Ø0.57 FINISHED PTH IS Ø0.93.
  - MINIMUM RECOMMENDED CENTER TO CENTER SPACING BETWEEN ADJACENT CONNECTORS: 47.00mm.
  - CONNECTOR KEEP OUT AREA.
  - MINIMUM PCB THICKNESS: 1.57mm.

spec ref	-	dr	Mark Gray	2010/08/04	projection	MM	size	A2	scale	12:1
tolerance std	ASME Y14.5	eng	David Humbert	2012/06/27	chr	-	ecn no	-	rel level	Released
surface	✓	appr	Brad Brubaker	2012/06/27	product family	-	cat. no.	10112628	rev	D
ASME Y14.5	linear	0.X	±0.25	0.XX	±0.13	0.XXX	±	angular	0°	±1/2°

# RECOMMENDED TOOLING KEEP OUT AREAS



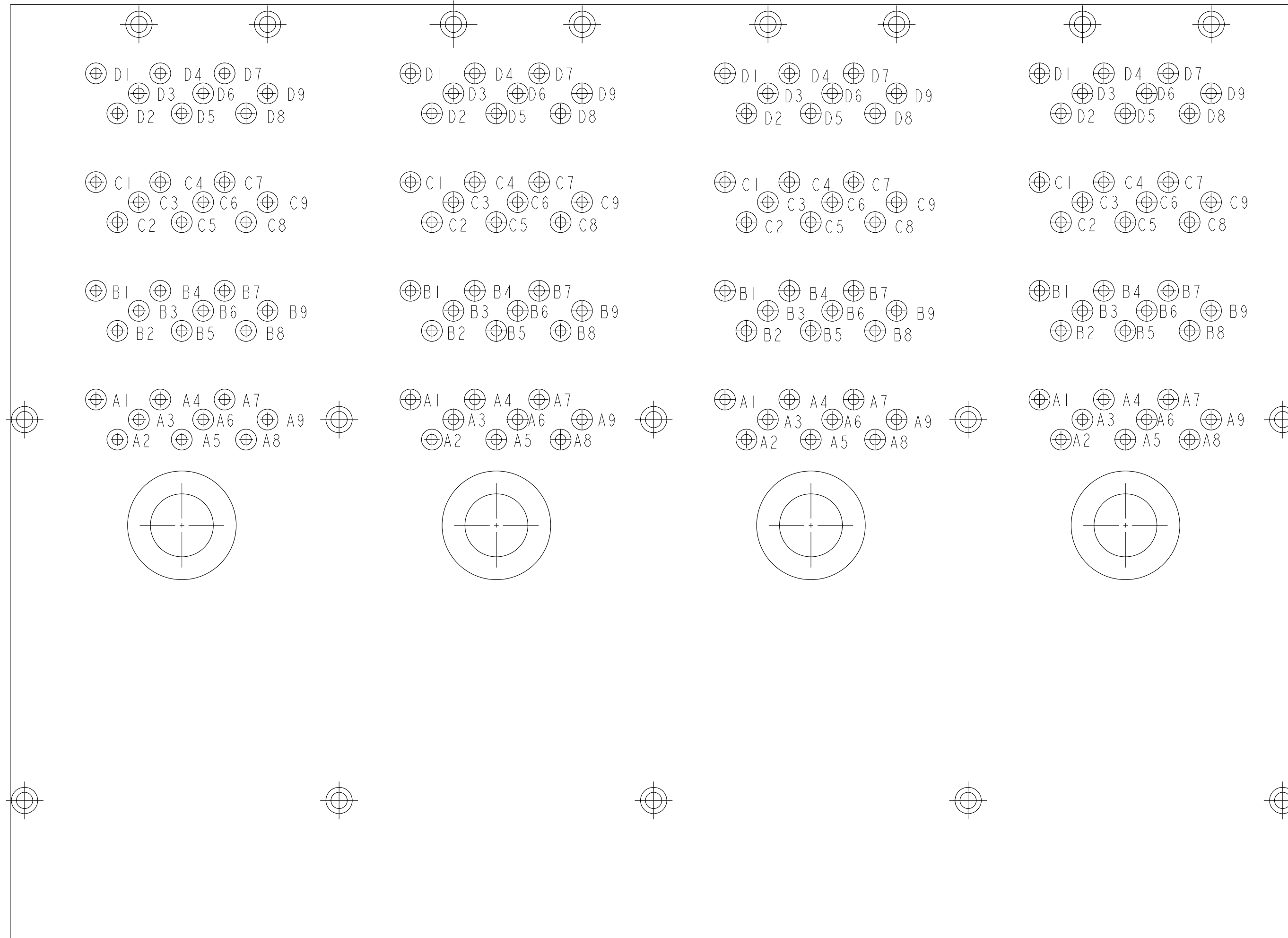
RECOMMENDED EXTRACTION TOOL  
KEEP OUT AREA NO COMPONENTS  
IN THESE AREAS



Copyright FCI.

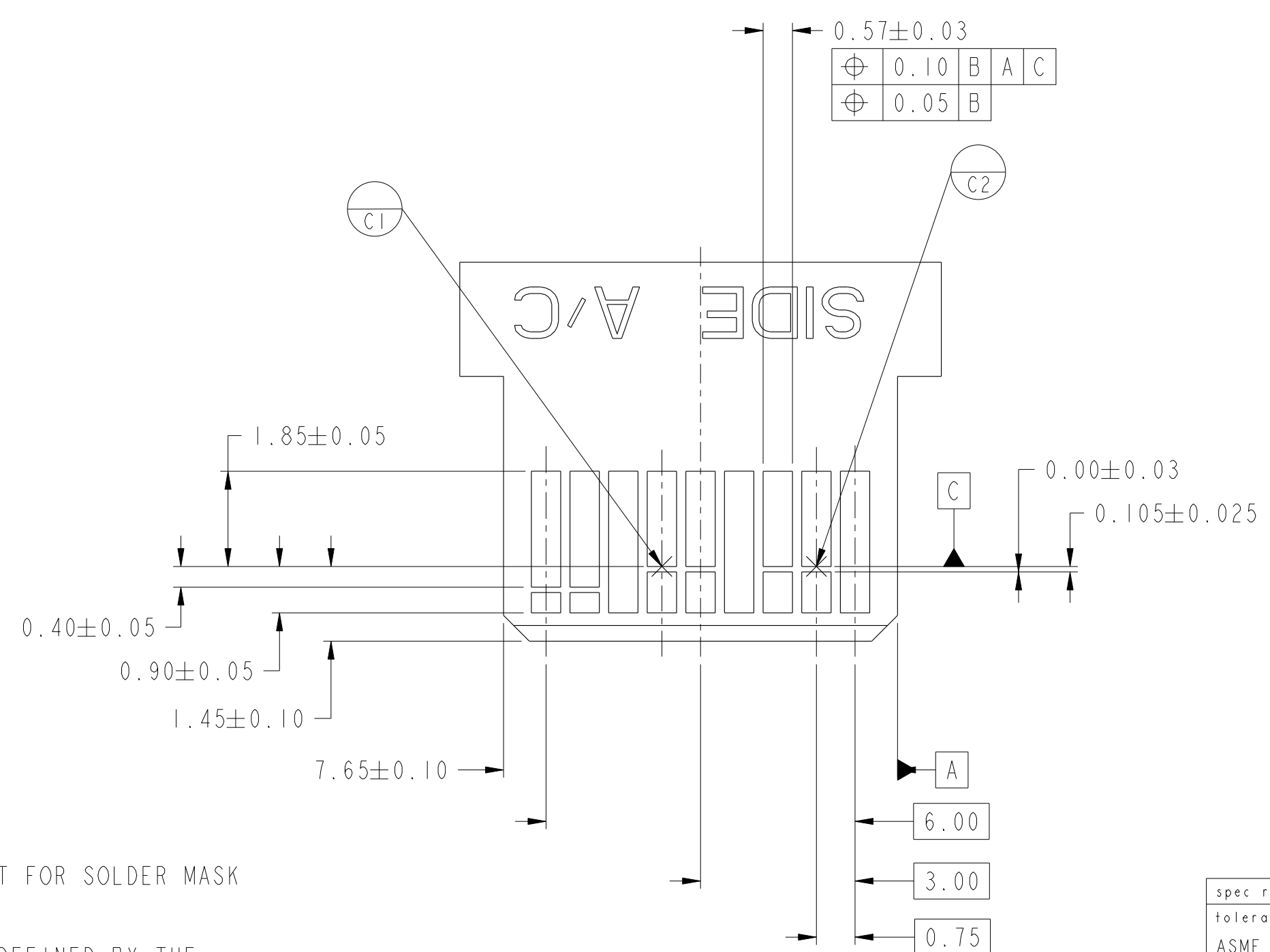
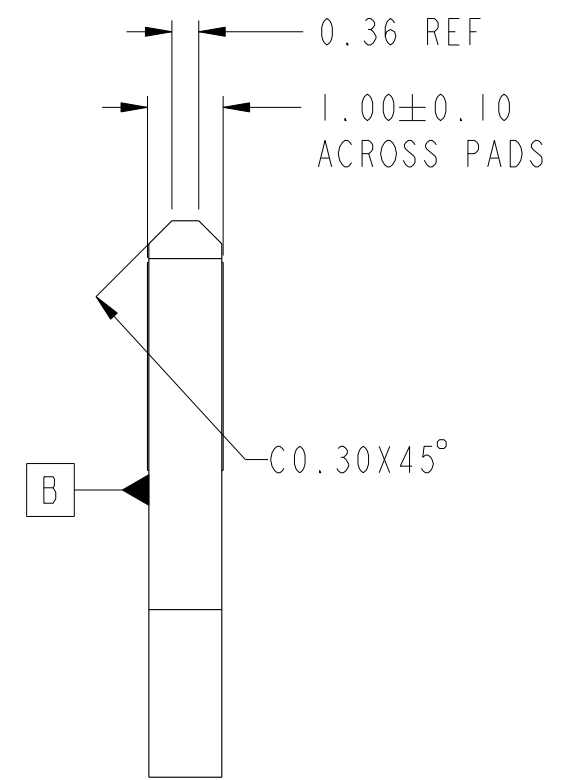
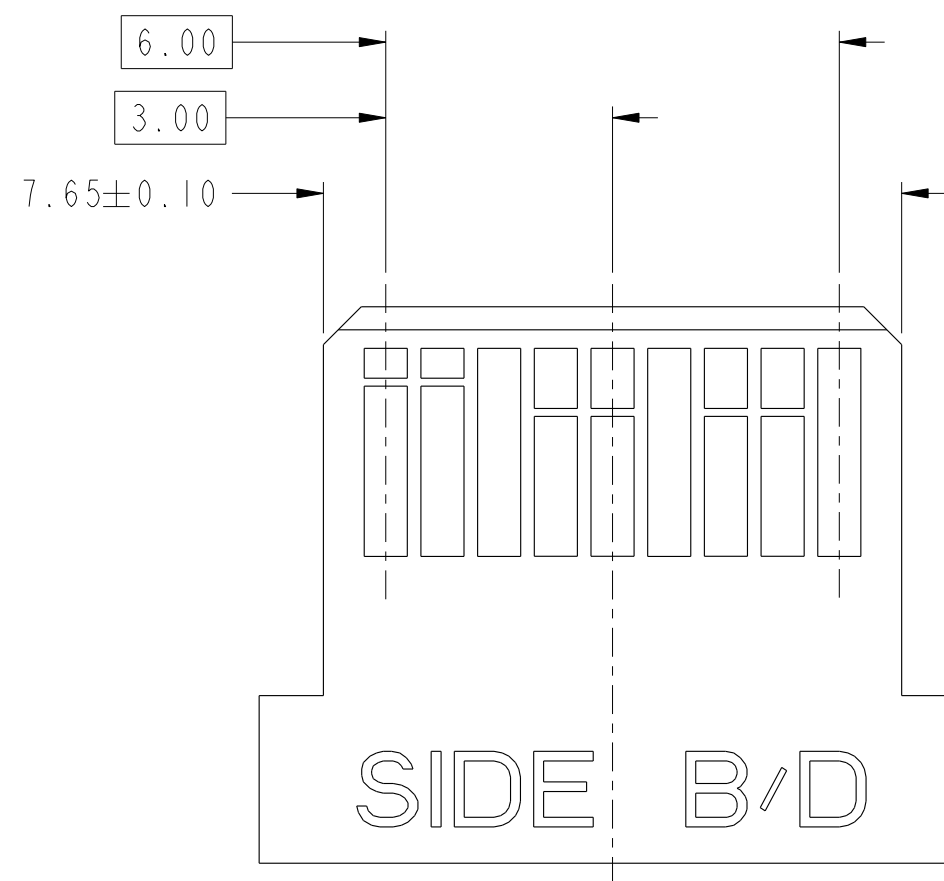
spec ref	-	dr	Mark Gray	2010/08/04	projection	MM	size	A2	scale	12:1								
tolerance std	ASME Y14.5	eng	David Humbert	2012/06/27			ecn no	ELX-V-012039-1										
TOLERANCES UNLESS OTHERWISE SPECIFIED		chr	-	rel level			Released											
surface	<table border="1"> <tr> <td>linear</td> <td>0.X</td> <td>±0.25</td> </tr> <tr> <td></td> <td>0.XX</td> <td>±0.13</td> </tr> <tr> <td></td> <td>0.XXX</td> <td>±-</td> </tr> <tr> <td>angular</td> <td>0°</td> <td>±1/2°</td> </tr> </table>	linear	0.X	±0.25				0.XX	±0.13		0.XXX	±-	angular	0°	±1/2°	appr	Brad Brubaker	2012/06/27
linear	0.X	±0.25																
	0.XX	±0.13																
	0.XXX	±-																
angular	0°	±1/2°																
ASME Y14.5				title	1x4 EXTERNAL ASSEMBLY		dwg no	10112628		rev	D							
		www.fci.com	cat. no.	-		Product - Customer Drw	sheet 5 of 7											

# PIN OUT DESIGNATIONS



spec ref	-	dr	Mark Gray	2010/08/04	projection	MM	size	A2	scale	12:1
tolerance std	ASME Y14.5	eng	David Humbert	2012/06/27			ecn no	ELX-V-012039-1		
	TOLERANCES UNLESS OTHERWISE SPECIFIED	chr	-	rel level			Released			
		appr	Brad Brubaker	2012/06/27			product family	-		
surface	✓	linear	0.X	±0.25		1x4 EXTERNAL ASSEMBLY MINI-SAS HD	dwg no 10112628	rev D		
			0.XX	±0.13						
			0.XXX	±						
ASME Y14.5	angular	0°	±1/2°	www.fci.com	cat. no.	-	Product - Customer Drw	sheet 6 of 7		





- NOTES:
- 15. 0.05 MINIMUM KEEP OUT FOR SOLDER MASK AROUND ALL PADS.
  - 16. DATUM C TARGETS ARE DEFINED BY THE RESPECTIVE PAD CENTER LINES AND THE LEADING EDGE OF THE TARGET PADS.

spec ref	-	dr	Mark Gray	2010/08/04	projection	MM	size	A2	scale	12:1																	
tolerance std	ASME Y14.5	eng	David Humbert	2012/06/27			ecn no	ELX-V-012039-1																			
chr	-	appr	Brad Brubaker	2012/06/27			rel level	Released																			
surface	<table border="1"> <tr> <td>linear</td> <td>0.X</td> <td>±0.25</td> </tr> <tr> <td></td> <td>0.XX</td> <td>±0.13</td> </tr> <tr> <td></td> <td>0.XXX</td> <td>±</td> </tr> <tr> <td>angular</td> <td>0°</td> <td>±1/2°</td> </tr> </table>	linear	0.X	±0.25				0.XX	±0.13		0.XXX	±	angular	0°	±1/2°			<table border="1"> <tr> <td>title</td> <td colspan="2">1x4 EXTERNAL ASSEMBLY</td> </tr> <tr> <td></td> <td colspan="2">MINI-SAS HD</td> </tr> </table>	title	1x4 EXTERNAL ASSEMBLY			MINI-SAS HD		<table border="1"> <tr> <td>dwg no</td> <td>10112628</td> </tr> <tr> <td>rev</td> <td>D</td> </tr> </table>	dwg no	10112628
linear	0.X	±0.25																									
	0.XX	±0.13																									
	0.XXX	±																									
angular	0°	±1/2°																									
title	1x4 EXTERNAL ASSEMBLY																										
	MINI-SAS HD																										
dwg no	10112628																										
rev	D																										
ASME Y14.5	www.fci.com	cat. no.	-	Product - Customer Drw	sheet 7 of 7																						



Copyright FCI.

## Looking for pricing, stock, or lifecycle information?

Click below to explore more details on WIN SOURCE:

 [View 10112628-101LF on WIN SOURCE](#)

 [Amphenol FCI Information](#)

## Optimize Your Supply Chain with WIN SOURCE Solutions

-  Global Sourcing Solution
-  Obsolete Management
-  Cost Control Management
-  Shortage Management
-  Alternative Solution
-  Excess Inventory Management