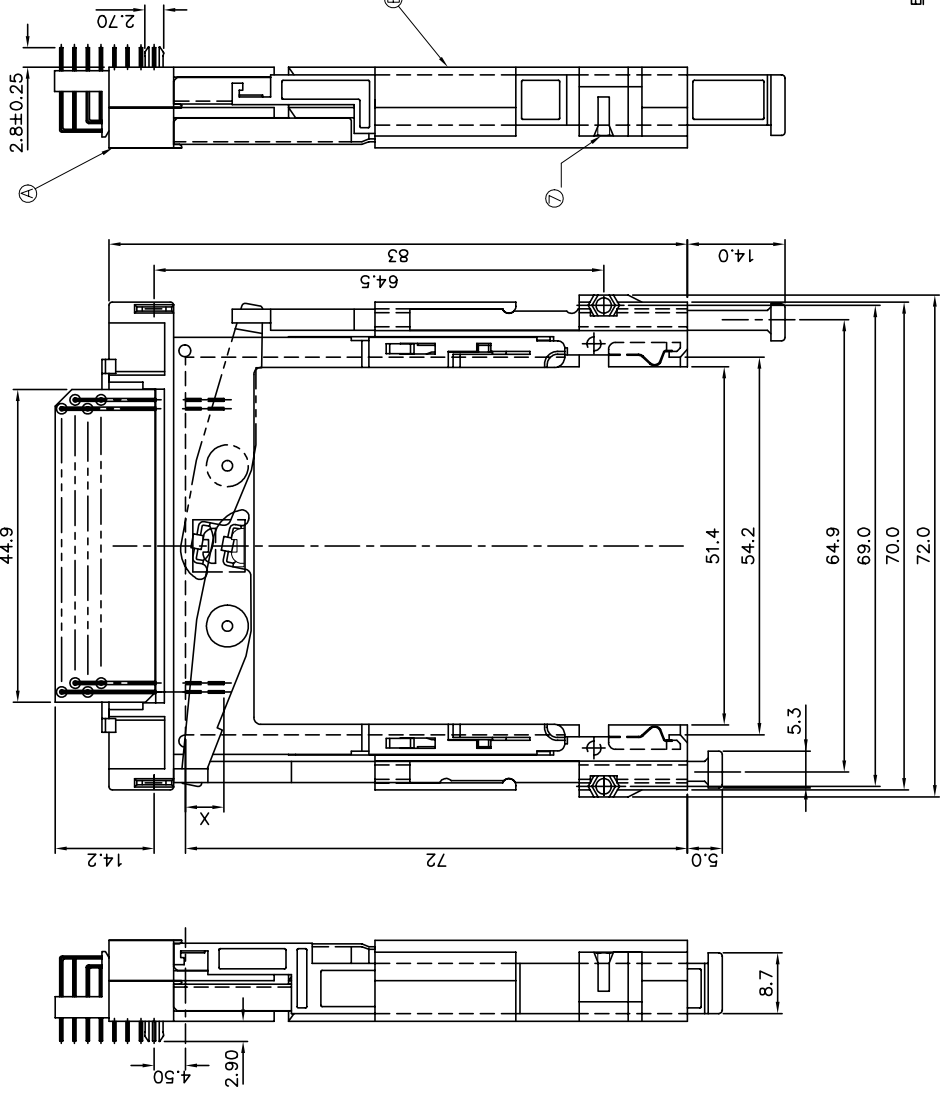




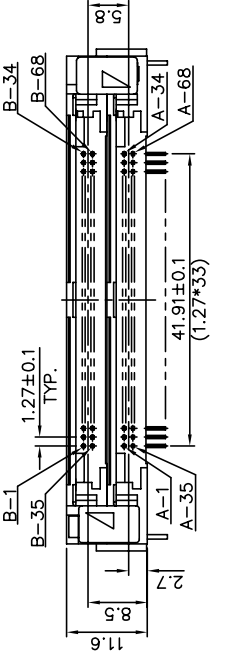
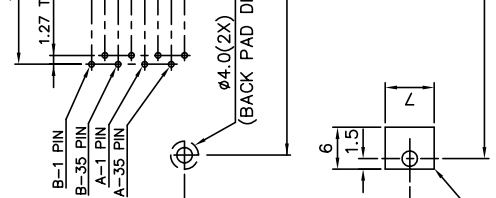
**THE DATASHEET OF
94721-001CALF**



PRODUCT NO.
94721-001CA/001CALF

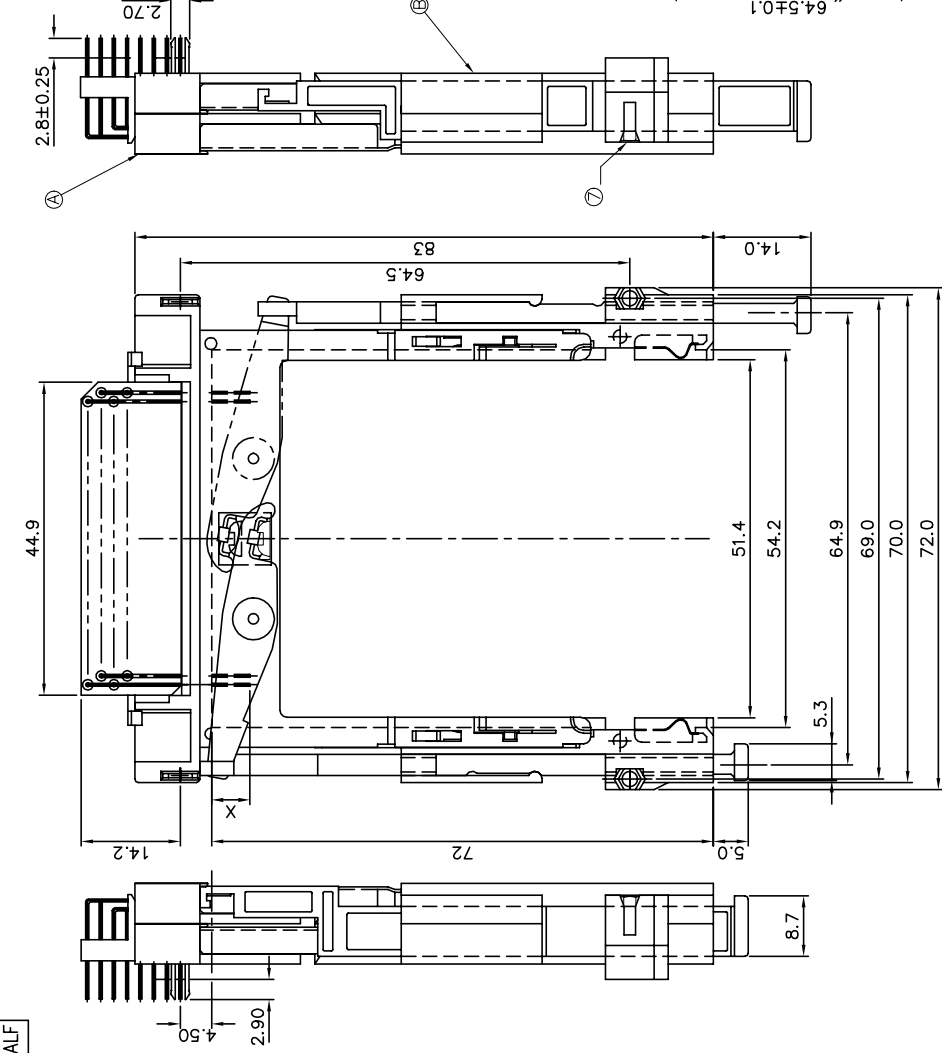


- NOTES:
1. EJECT FORCE 3.5 Kg M /
 2. ASSY PROCESS
 3. EJECT TRAVEL: 9.0mm
 - 4.1 PLASTIC : HIGH TEM
 - 4.2 PART (EJECT M PLASTIC : HIGH TEM
 5. FINISH (PIN)
 - 6.
 - 7 NUT M2*0.4P (2X) RETE
 - 8 IF LEAD FREE P.I.N THE H
 - 9 IF LEAD FREE P/I.N THE
 - 10 OTHER COUNTRY RE
 - 11 PRODUCT SPEC: 110-26

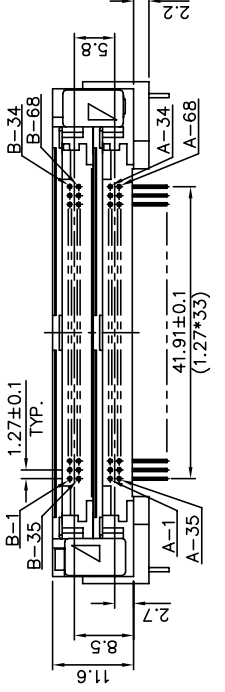
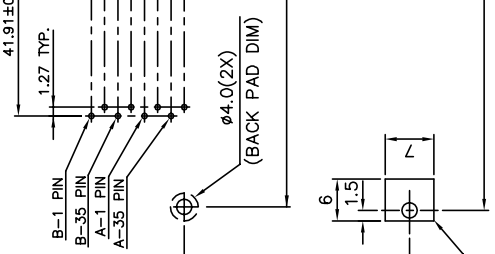


mat'l. code	tr	ec	n	nd	dr	date	Surface	tolerances
K	N05-174	WB	06/16/05				IS1302	
L	BX-H-007983	ZK	11/01/11				angle	0
M	BX-H-011435	ZK	04/23/12				0°±2'	0.1
F	T50218	WL	0726/95	dir	C L FENG			
G	T50236	WL	0815/95	eng	JOSEPH HS			
H	T60040	WL	01/30/96	chr	JOSEPH HS			
J	T60486	WL	12/09/96	ppd	D K WANG			
Sheet	revisio	n	M	M	M	M		
Index	sheet	1	2	3	4	5		

PRODUCT NO.
94721-002CA/002CALF

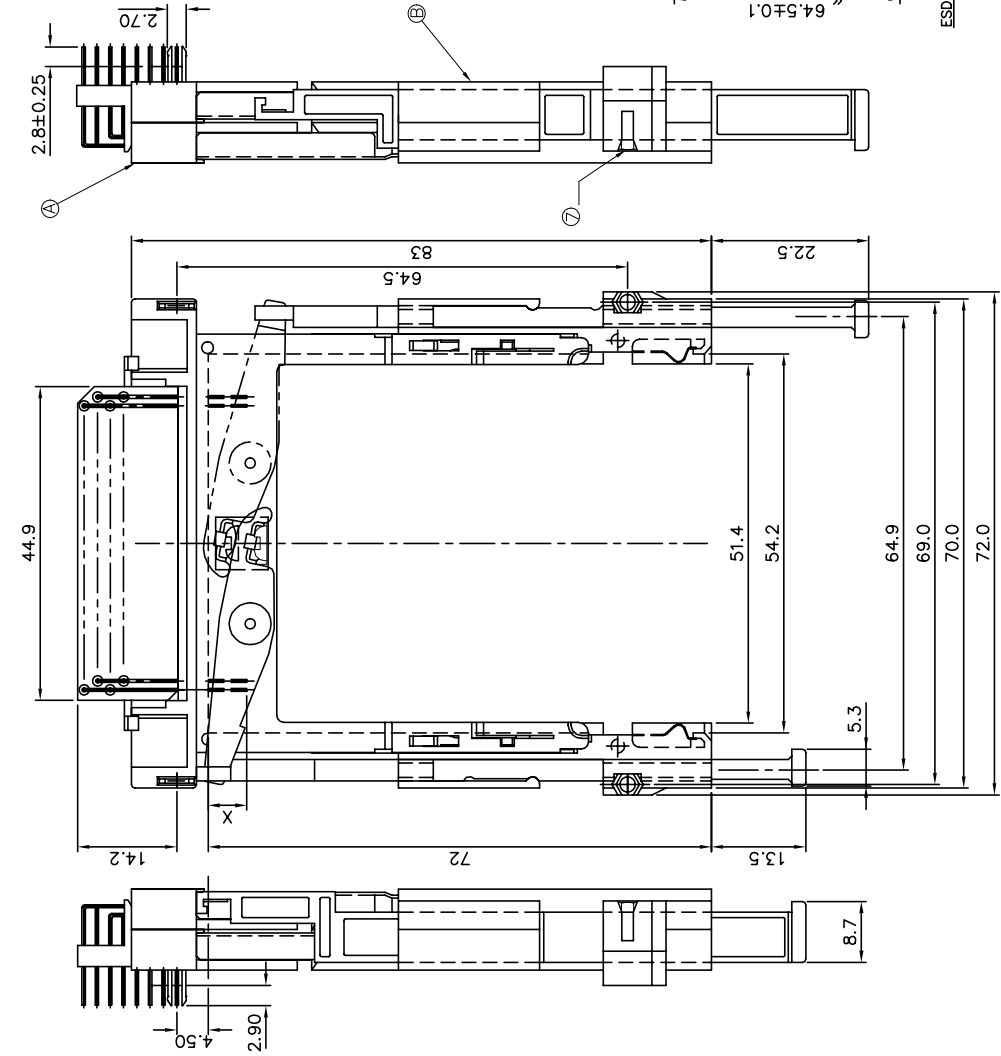


- NOTES:
- EJECT FORCE 5 Kg
 - EJECT PROCESS:
 1. MOUNT PART
 - 2.1 SOLDER THEN FIX
 - EJECT TRAVEL: 9.0mm
 - MATERIAL:
 - 4.1 PART (A) (HEADER PLASTIC : HIGH THERMAL CONDUCTIVITY)
 - 4.2 PART (B) (EJECT PLASTIC : HIGH THERMAL STABILITY)
 - FINISH (PIN) : COPPER UNDER PLATING CONTACT AREA SOLDER TAIL
 - | DIM "X" | PIN NUMBER |
|---------|--|
| Ø | NUT M2*0.4P (2X) RET |
| 8 | IF LEAD FREE P.N.THE RET 280°C PEAK TEMPERATURE APPLICATION WITH A |
| 9 | IF LEAD FREE P.N.T.T. AND OTHER COUNTRY LEAD FREE P.N.PACK |
| 10 | LEAD FREE P.N.PACK |
| 11 | PRODUCT SPEC. 110 |

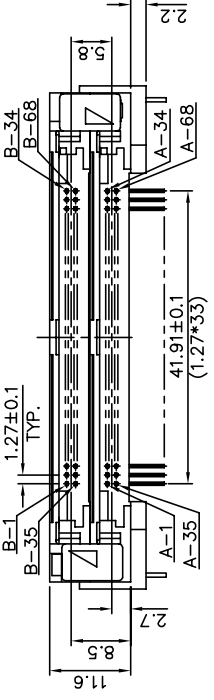
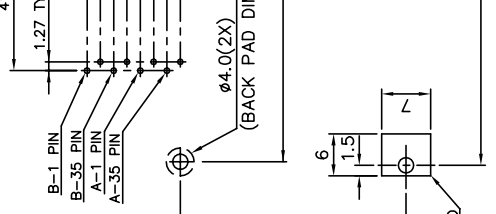


mat'l. code	Surface	tolerances
ISI1902	ISI1902	ISI1902
tr	tr	tr
ec	ec	ec
nr	nr	nr
date	date	date
M	M	M
	angle	0
	0°±2'	0.1
	dir	C L FENG
	eng	JOSEPH HS
	chr	JOSEPH HS
	app	D K WANG
sheet	revision	
index	sheet	

PRODUCT NO.
94721-002DA/002DALF

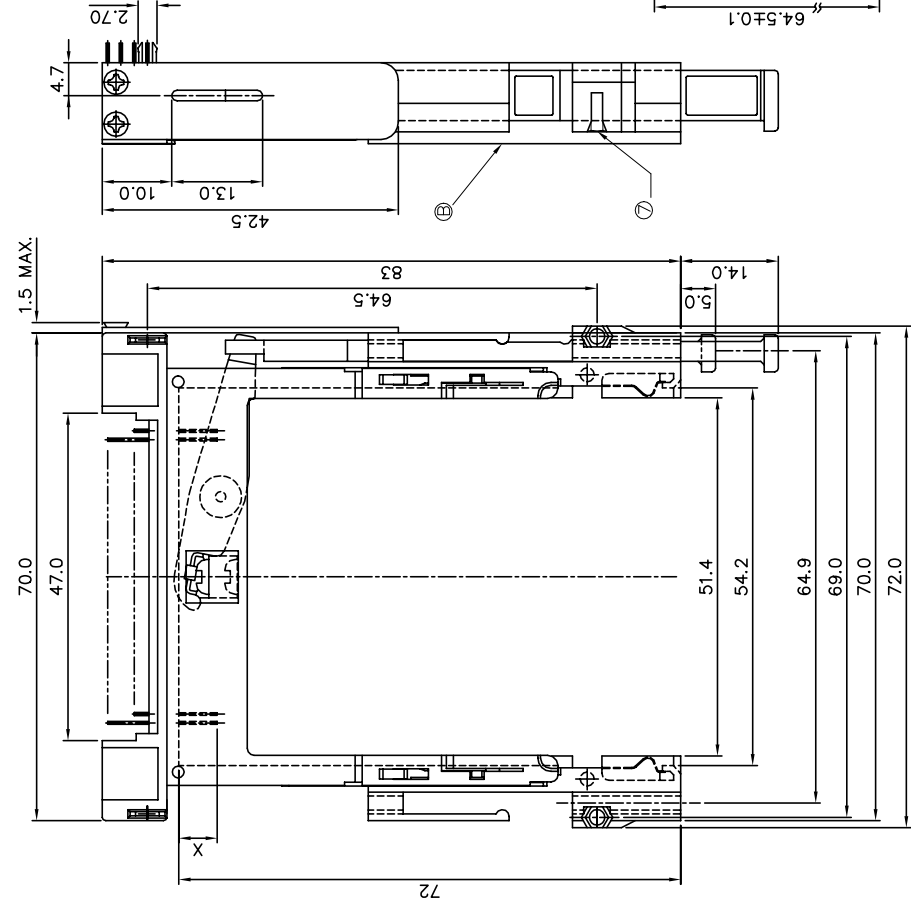


- NOTES:
1. EJECT FORCE
 2. EJECT PROCESS
 3. EJECT TRAVEL
 - 4.1 PART
 - 4.2 PART
 5. FINISH
 - 6.
 - 7.
 - 8.
 - 9.
 - 10.
 - 11.

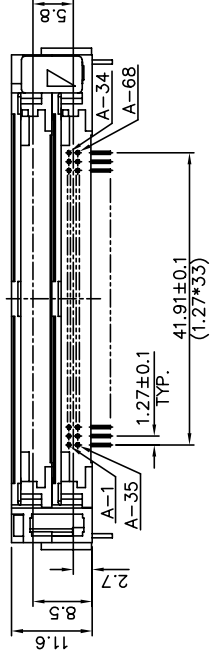
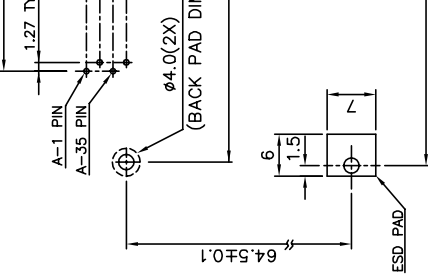
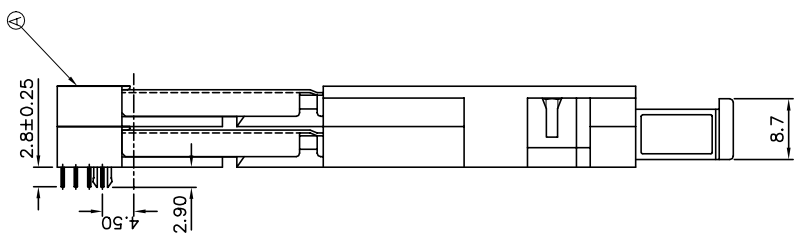


mat'l. code	Surface	ISD1302
tech rddr	date	tolerances un
M		angle
		0°±2'
		dr
		C L FEN
		enrJOSEPH H
		chr JOSEPH H
		appd D K WAN
sheet index	revision	Sheet

PRODUCT NO.
94721-003CA/003SCALE

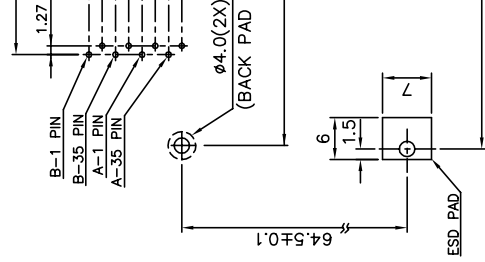
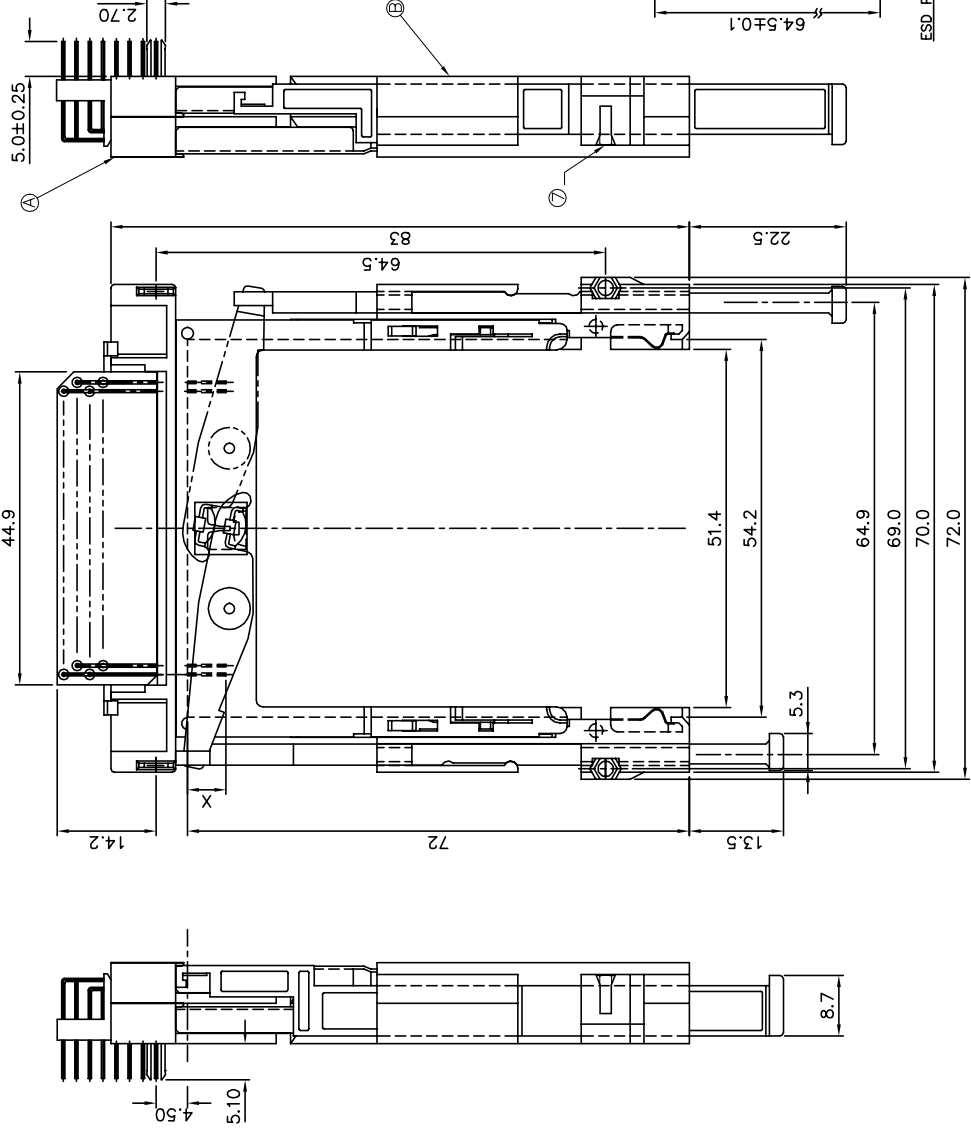


- NOTES:
- EJECT FORCE 3.5
 - ASSY PROCESS
 - 2.1 SOLDER THEN
 - EJECT TRAVEL: 9
 - MATERIAL
 - PART (HEA PLASTIC : HIGH PIN : COPPER)
 - PART (ELECTRIC PLASTIC : STA EMI CONTACT)
 - FINISH (PIN UNDER PLATE CONTACT AREA SOLDER TAIL)
 - DIM "X" PIN NUMB
 - NUT M2*0.4P (2X)
 - IF LEAD FREE P/ N 260°C PEAK TEMP APPLICATION WITH
 - IF LEAD FREE P/ N AND OTHER COU
 - LEAD FREE P/ N
 - PRODUCT SPEC:

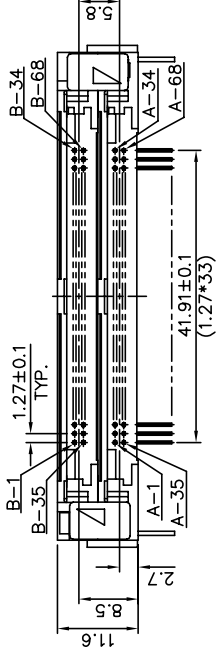


mat'l. code	Surface	tolerances	ur
tr	ISI1302	angle	0
M		0°±2'	0.1
	dir	C L FENG	
	eng	JOSEPH HS	
	chr	JOSEPH HS	
	app	D K WANG	
sheet index	revision		
	sheet		

PRODUCT NO.
94721-003DA/003DALE



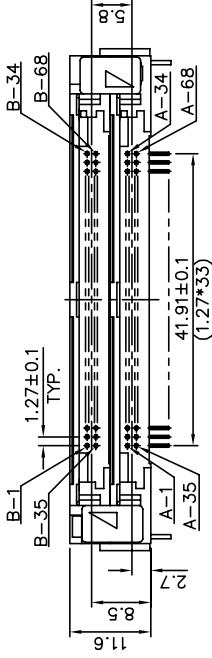
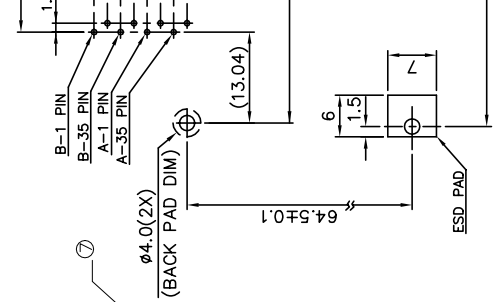
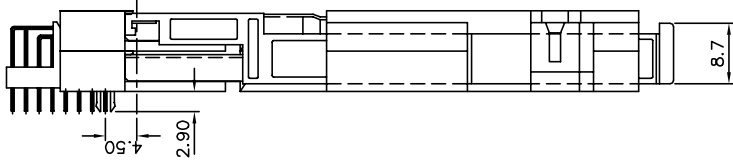
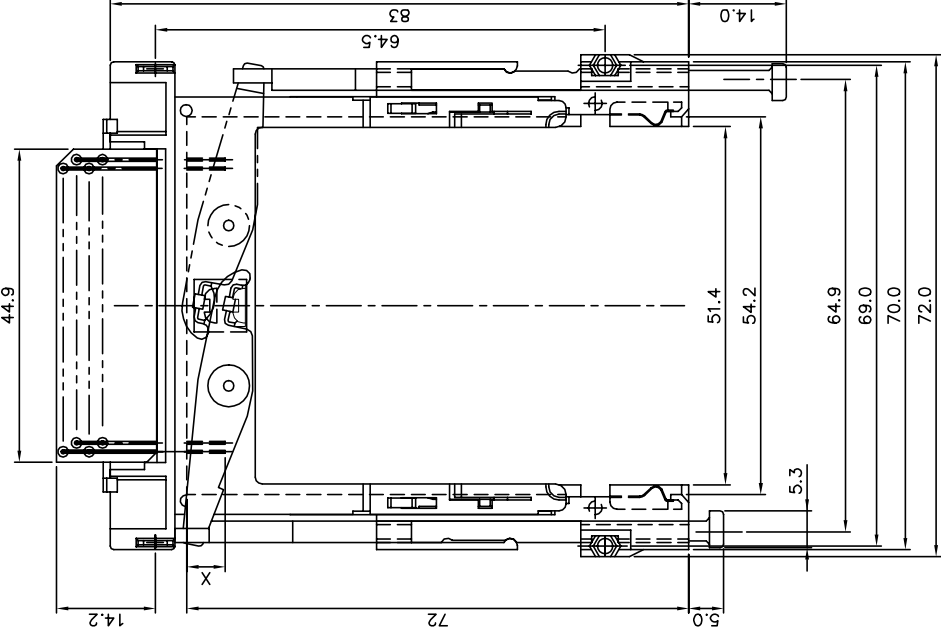
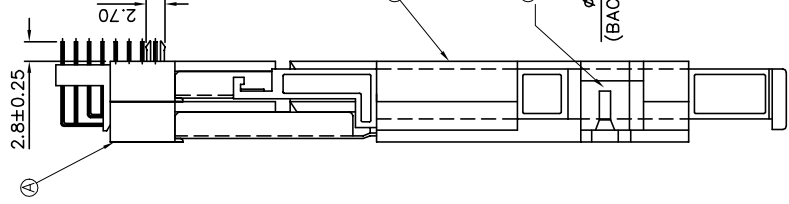
- NOTES:
- EJECT FORCE
 - ASSY PROCESS
 - EJECT TRAVEL
 - MATERIAL PLASTIC
 - FINISH (PIN)
 - DIM
 - NUT M2*0.4P (2)
 - IF LEAD FREE
 - IF LEAD FREE
 - IF LEAD FREE
 - IF LEAD FREE
 - IF LEAD FREE
 - PRODUCT SPEC



mat'l. code	Surface	tolerances
tr	ISI1302	ur
M	angle	0
	0°±2'	0.1
	dir	C L FENG
	eng	JOSEPH HS
	chr	JOSEPH HS
	app	D K WANG
Sheet	revision	
Index	sheet	

PRODUCT NO.
94721-006CA/006CALF

- NOTES:
1. EJECT FROM PLASTIC TRAY
 2. ASSEMBLY FROM PLASTIC TRAY
 3. EJECT FROM PLASTIC TRAY
 4. MATERIAL
 5. FINISH (PIN CONTACTS SOLDED)
 - 6.
 7. NUT M2*0.4F
 8. IF LEAD FEEL APPLICATION
 9. IF LEAD FEEL AND OTHER
 10. LEAD FREQUENCY
 11. PRODUCT S

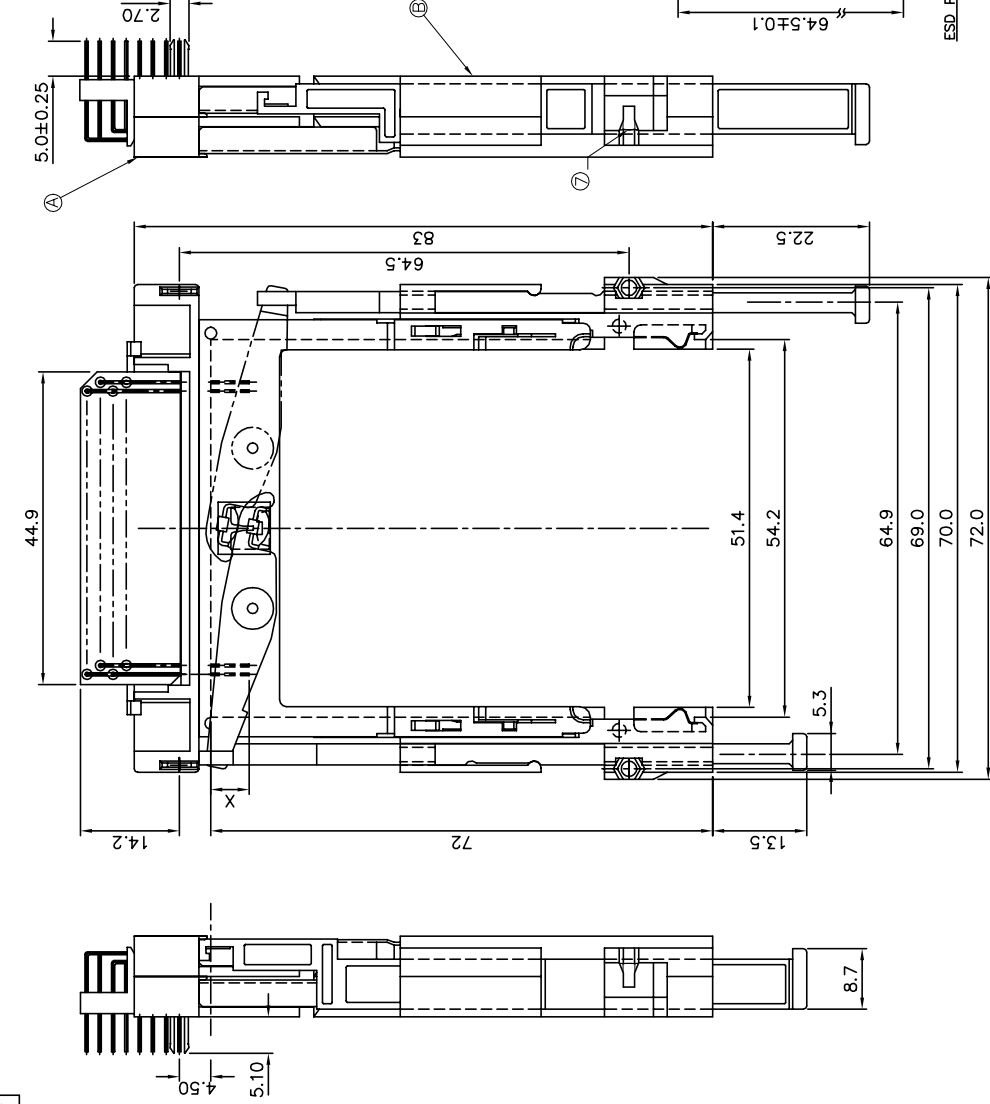


mat'l. code	Surface
trtecn nppdr	ISI1302
M	tolerances ur
	angle
	0
	0°±2'
	dir
	C L FENG
	engr JOSEPH HS
	chir JOSEPH HS
	appd D K WANG
sheet index	revision sheet

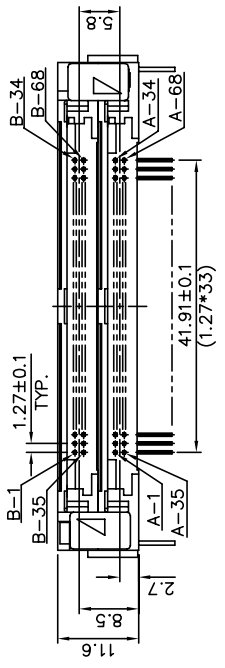
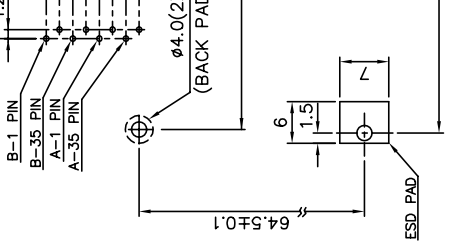
A

B

PRODUCT NO.
94721-004DA/004DALF



- NOTES:
- EJECT FORCE
 - ASSY PROC
 - EJECT TRAY
 - MATERIAL
 - FINISH (PIN)
 - UNDER CONTACT SOLDER
 - ⑦ NUT M2*0.4P
 - IF LEAD FREE
 - 260°C PEAK APPLICATION
 - IF LEAD FREE AND OTHER
 - LEAD FREE
 - PRODUCT SF



mat'l. code	Surface
tr/ecn n/pdr	ISI1302
M	tolerances ur
	angle
	0
	0°±2'
	dir
	C L FENG
	engr JOSEPH HS
	chr JOSEPH HS
	appd D K WANG
sheet index	revision sheet

A

B

Looking for pricing, stock, or lifecycle information?

Click below to explore more details on WIN SOURCE:

- [View 94721-001CALF on WIN SOURCE](#)
- [Amphenol FCI Information](#)

Optimize Your Supply Chain with WIN SOURCE Solutions

- ✓ Global Sourcing Solution
- ✓ Obsolete Management
- ✓ Cost Control Management
- ✓ Shortage Management
- ✓ Alternative Solution
- ✓ Excess Inventory Management