



**THE DATASHEET OF
51740-10102401CALF**



1 | 2

3 |

PRODUCT NUMBER
51740-ABBCCDDDEF --
NOTE: ①

0.100 REF TYP
[2.540]

0.100 REF TYP
[2.54]

0.100 REF TYP
[2.54]

BOARD LOCK 2X
IF SELECTED
(SEE NOTE 8)

0.250 REF TYP
[6.35]

0.450 REF
[11.43]

0.100 REF TYP
[2.54]

0.175 REF
[4.45]

0.450 REF
[11.43]

DIM "A" ± 0.010
NOTE 10 [0.25]

DIM "C"

DIM "D"

DIM "E"

VOID CORING
OPTION, TYP

SIGNAL
POS. A1

POWER
POS. P1

A

All rights strictly reserved. Reproduction or issue to third parties in any form whatever is not permitted without written authority from the proprietor.

Property of FCI. Copyright FCI.

B

mat'1 code		SEE NOTE 2		tolerances unless otherwise specified		CUSTOMER	
lir	ecn no.	dr	date			CDPY	
K	DG05-0132	SJ	06/06/05	linear	.XX±.01/0.X±0.3	projection	
L	DG05-0153	SJ	06/10/05		.XXX±.005/0.XX±0.13		
M	DG05-0485	G10JW	11/21/05	angles	.XXX±.0020/.XX±.051		
N	DG06-0362	JULIA	08/30/06		$0^\circ \pm 2^\circ$		
P	DG08-0239	JC	09/11/08	engr	D. EATON 05-25-99		
R	DG10-0318	AL	09/03/10	chr	RYAN YUAN 11/08/06		
		revision	R	R	J. BROWN 05-24-99		
sheet index		sheet	1	2	J. BROWN 05-24-99		
			1	2			
			3				

INCH/MM
Scale
1 : 1

1 | 2

3 |

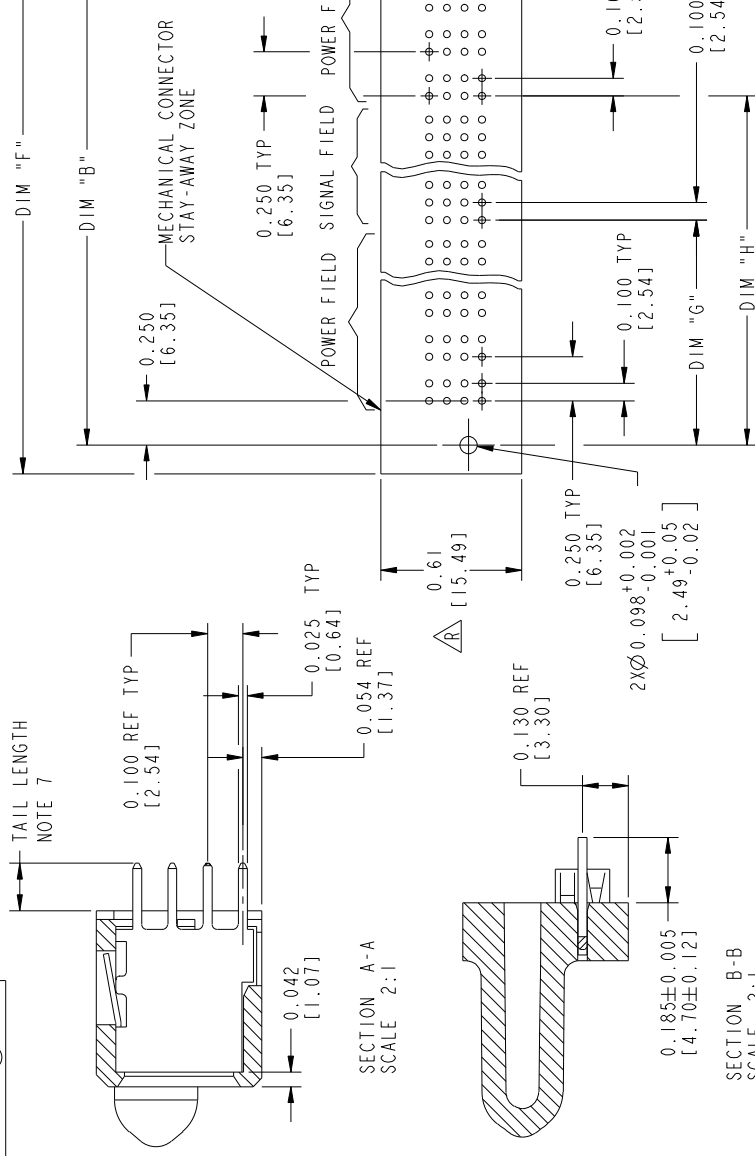
Pro/E

PDM: Rev.F

1 | 2

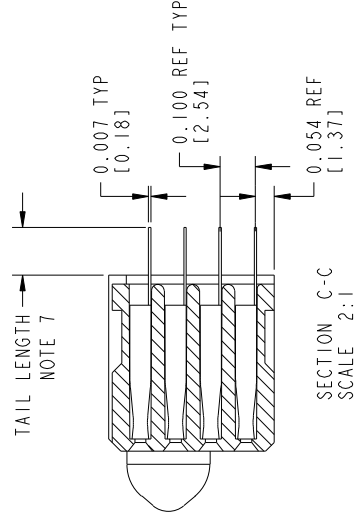
3 |

PRODUCT NUMBER
51740-ABBCCDDDEF --
NOTE: ①



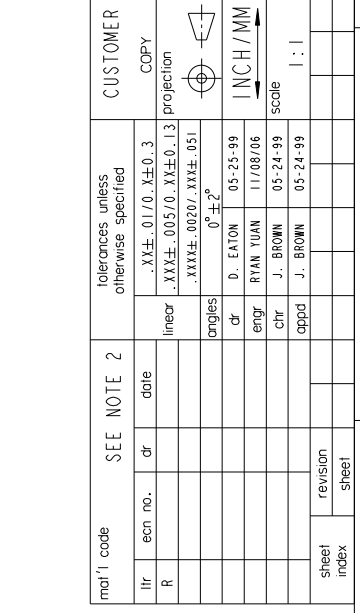
SECTION A-A
SCALE 2:1

SECTION B-B
SCALE 2:1



SECTION C-C
SCALE 2:1

RECOMMENDED PCB LAYOUT



1 | 2

3 |

Pro/E

Tous droits strictement reserves. Reproduction ou communication a des tiers interdite sous quelque forme que ce soit sans autorisation écrite du propriétaire. Propriete de c FCI. Droits de reproduction FCI.



All rights strictly reserved. Reproduction or issue to third parties in any form whatever is not permitted without written authority from the proprietor. Property of FCI. Copyright FCI.

PDM: Rev:F

Looking for pricing, stock, or lifecycle information?

Click below to explore more details on WIN SOURCE:

- [View 51740-10102401CALF on WIN SOURCE](#)
- [Amphenol FCI Information](#)

Optimize Your Supply Chain with WIN SOURCE Solutions

- ✓ Global Sourcing Solution
- ✓ Obsolete Management
- ✓ Cost Control Management
- ✓ Shortage Management
- ✓ Alternative Solution
- ✓ Excess Inventory Management