

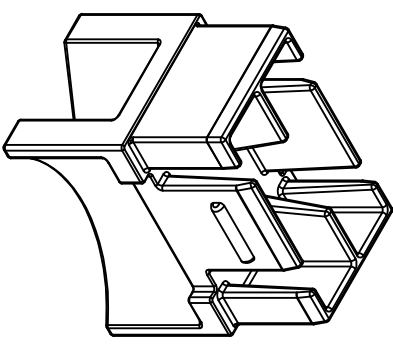
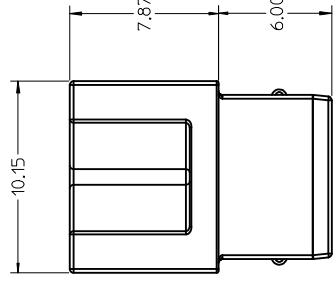
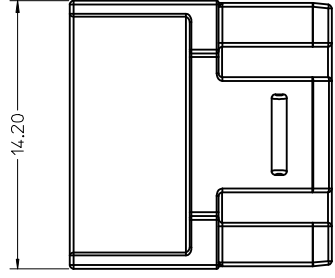
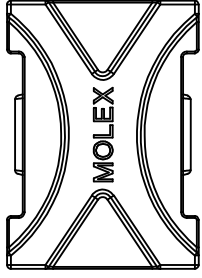


THE DATASHEET OF
759510999



NOTES:

1. MATERIAL: POLYESTER, VALOX 357
UL YELLOW CARD NUMBER: E12150
2. PART COMPLIES WITH CLASS B OF SPECIFICATION PS-45499-002.
3. PACKAGED PER PK-75951-001.



ADD VALOX 357 TO MATERIAL NOTE	REV
ETC NO: UCP2014-4595	
DRWN:RWH/PPLE 2014/04/29	
CHKD:BBARKER 2014/04/29	
APPR:SMILLER 2014/05/19	
DESCRIPTION	

QUALITY SYMBOLS
= 0
= 0
= 0

GENERAL TOLERANCES (UNLESS SPECIFIED)	INCH
4 PLACES ± ---	± ---
3 PLACES ± ---	± ---
2 PLACES ± 0.13	± ---
1 PLACE ± 0.25	± ---
0 PLACE ±	±
ANGULAR ±1/2°	
DRAFT WHERE APPLICABLE MUST REMAIN WITHIN DIMENSIONS	

DIMENSION STYLE	MM ONLY
DRAWN BY	MIBARRA
DATE	2007/04/30
CHECKED BY	BBARKER
DATE	2007/04/30
APPROVED BY	SMILLER
DATE	2007/04/30
MATERIAL NO.	75951-0999
SIZE	THIS DRAWING CONTAINS INCORPORATED AND SH

Looking for pricing, stock, or lifecycle information?

Click below to explore more details on WIN SOURCE:

 [View 759510999 on WIN SOURCE](#)

 [Molex, LLC Information](#)

Optimize Your Supply Chain with WIN SOURCE Solutions

-  Global Sourcing Solution
-  Obsolete Management
-  Cost Control Management
-  Shortage Management
-  Alternative Solution
-  Excess Inventory Management