



THE DATASHEET OF
917308-1



THIS DRAWING IS UNPUBLISHED.

RELEASED FOR PUBLICATION

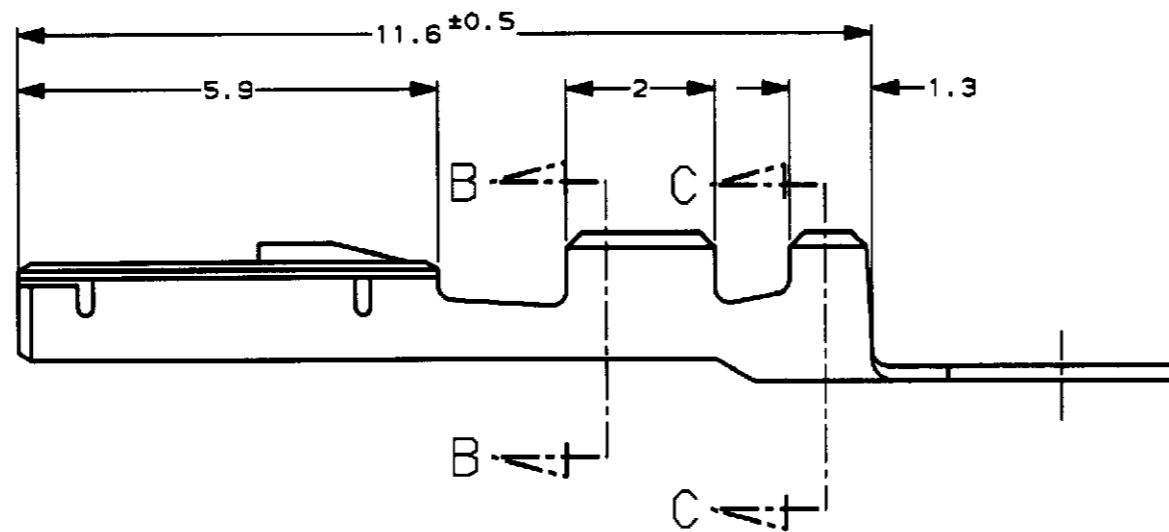
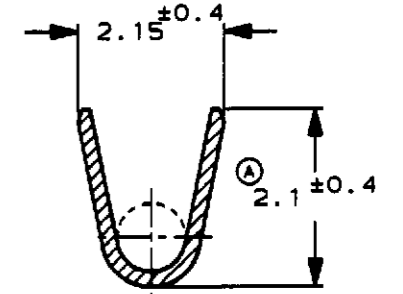
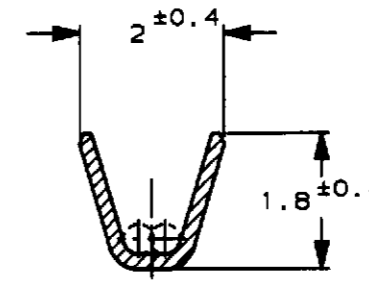
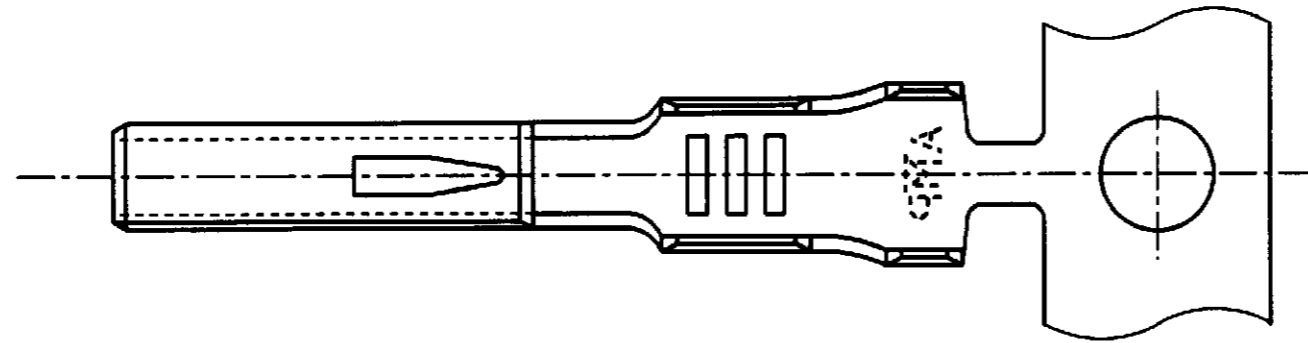
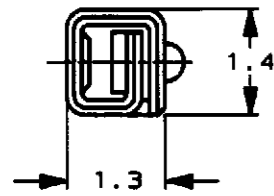
.19

LOC DIST

REVISIONS

© COPYRIGHT 1994 BY AMP INCORPORATED. ALL RIGHTS RESERVED.

P	LTR	DESCRIPTION	ECN	DATE	DWN	APVD
0		RELEASED	FJ00-3023-95	7/31'95	TS	AT
A		REVISED	FJ00-0253-97	2/20'97	TH	KY
B		REVISED	FJ00-2055-98	27OCT98	TH	KY



SECT. B-B

SECT. C-C

— 1 ; 本 ☒

注：
1. 適用圧着規格番号：114-5193

NOTES;
1. APPLICABLE CRIMPING SPEC No. 114-5193

THIS DRAWING IS A CONTROLLED DOCUMENT FOR AMP INCORPORATED. IT IS SUBJECT TO CHANGE AND THE CONTROLLING ENGINEERING ORGANIZATION SHOULD BE CONTACTED FOR THE LATEST REVISION.		DWN T. SHINOHARA 7/31'95	WIRE RANGE 適合電線断面積 AWG #22-#20 (0.3-0.5mm)	INSULATION DIA 被覆外径 1.4-1.7
DIMENSIONS 単位 種 mm		CHK K. YUASA 7/31'95	AMP 株式会社アールピーエー Kawasaki, Japan	
TOLERANCES UNLESS OTHERWISE SPECIFIED 一般公差 10% : ±0.2 30% : ±0.25 100% : ±0.3 ANGLE : ±0.3°		APVD A. TOMITA 7/31'95	NAME 名称 REC CONTACT (MINI MULTI LOCK CONN) リセ コンタクト (ミニ・マルチ・ロック コネクタ)	
MATERIAL 材料 PRE-TIN 錫メッキ済リン青銅0.2t		FINISH 仕上 #	PRODUCT SPEC 製品規格 #	APPLICATION SPEC 取付適用規格 #
		WEIGHT 0.16g	SIZE A3	CAGE CODE 00779
		CUSTOMER DRAWING	DRAWING NO 917308	SCALE 10-1
			SHEET 1	OF 1
			REV B	

参考 ☒ 面

Looking for pricing, stock, or lifecycle information?

Click below to explore more details on WIN SOURCE:

 [View 917308-1 on WIN SOURCE](#)

 [TE Connectivity](#) Information

Optimize Your Supply Chain with WIN SOURCE Solutions

-  Global Sourcing Solution
-  Obsolete Management
-  Cost Control Management
-  Shortage Management
-  Alternative Solution
-  Excess Inventory Management