



**THE DATASHEET OF  
DFR0338**





## IO expansion board for Edison SKU: DFR338

---



### Contents

- [1 Introduction](#)
- [2 Application](#)
- [3 Pinout Diagram](#)
- [4 Tutorial](#)
  - [4.1 IO expansion board for Edison Quick Start](#)
    - [4.1.1 The Construction of the Hardware Environment](#)
      - [4.1.1.1 Hardware Connection Diagram](#)
    - [4.1.2 The Construction of the Software Environment](#)
      - [4.1.2.1 Software Environment](#)
      - [4.1.2.2 Operating System](#)
      - [4.1.2.3 Compile Environment](#)

### Introduction

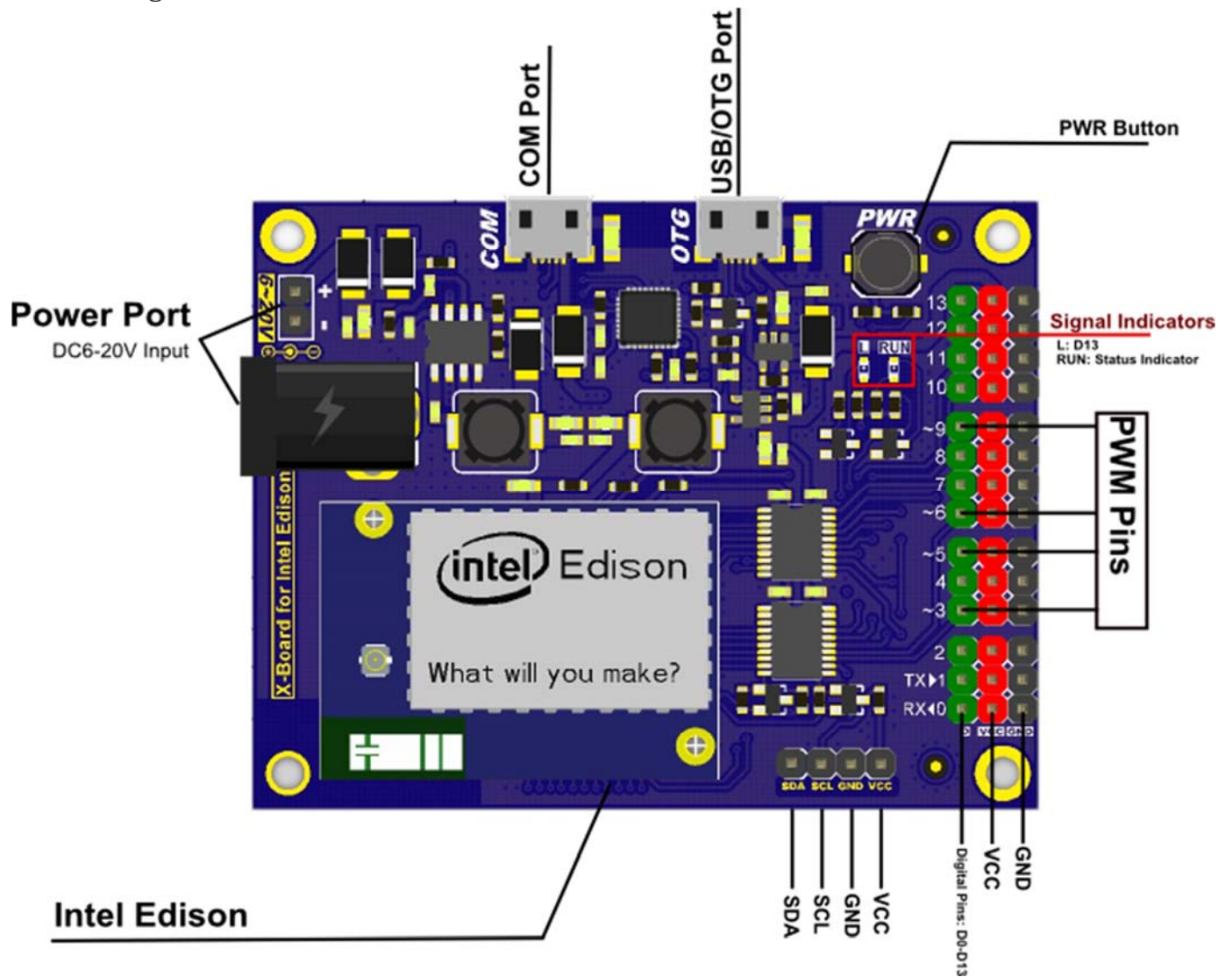
IO expansion board for Edison is a multi-purpose, all-in-one development platform based on Intel Edison and Arduino SoC. IO expansion board for Edison is compatible with Arduino open source platform and Linux, and supports Java and C development environment. It can also be used as a standalone communication platform for software like flash, processing, Max/MSP and VVVV.

## Application

- Digital I/O pins :D0-D13
- PWM Output interface :4 (Digital pins D3, D5, D6 and D9)
- Support USB power and external power supply switch
- Support 1 x I2C interface
- Support Broadcom 43340 802.11 a/b/g/n dual band (2.4G and 5GHz) WiFi

Support Bluetooth 4.0

## Pinout Diagram



## Tutorial

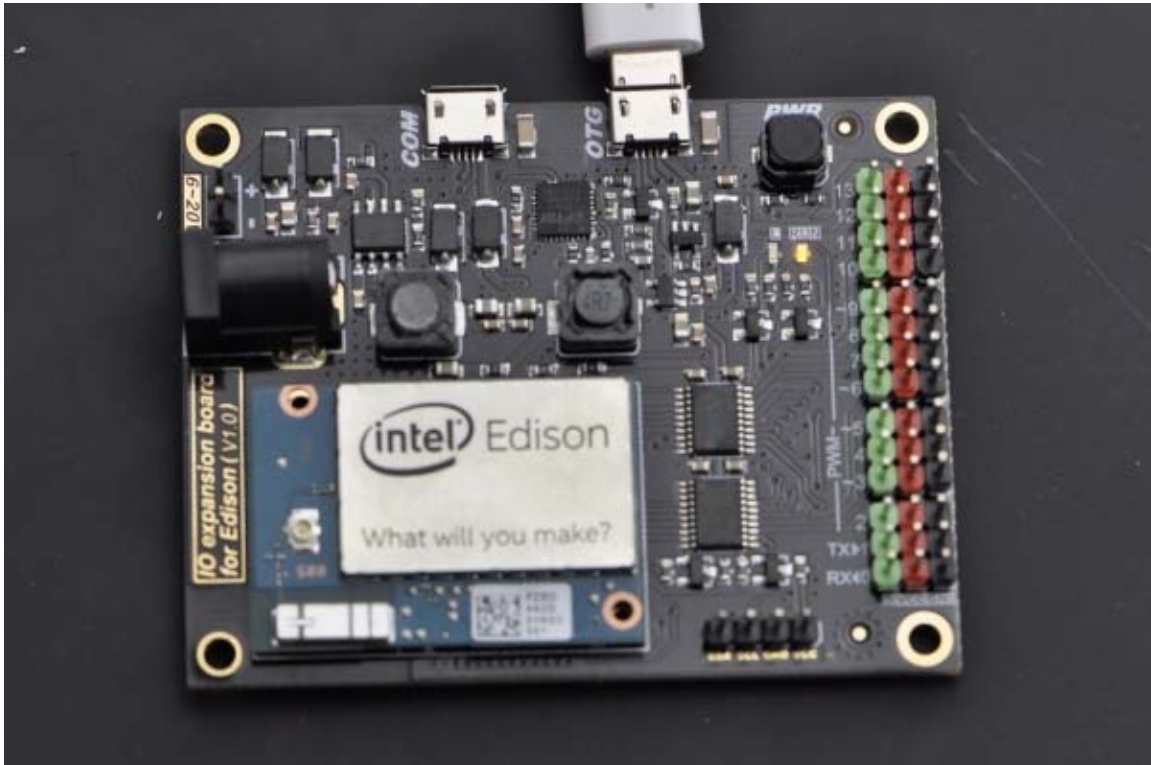
### IO expansion board for Edison Quick Start

#### The Construction of the Hardware Environment

Part List:

- IO expansion board x1
- Edison module x1
- micro USB x1
- Computer x1

Hardware Connection Diagram



Hardware Connection Diagram

#### The Construction of the Software Environment

Software Environment

Operating System

**Windows 8.1**

Compile Environment

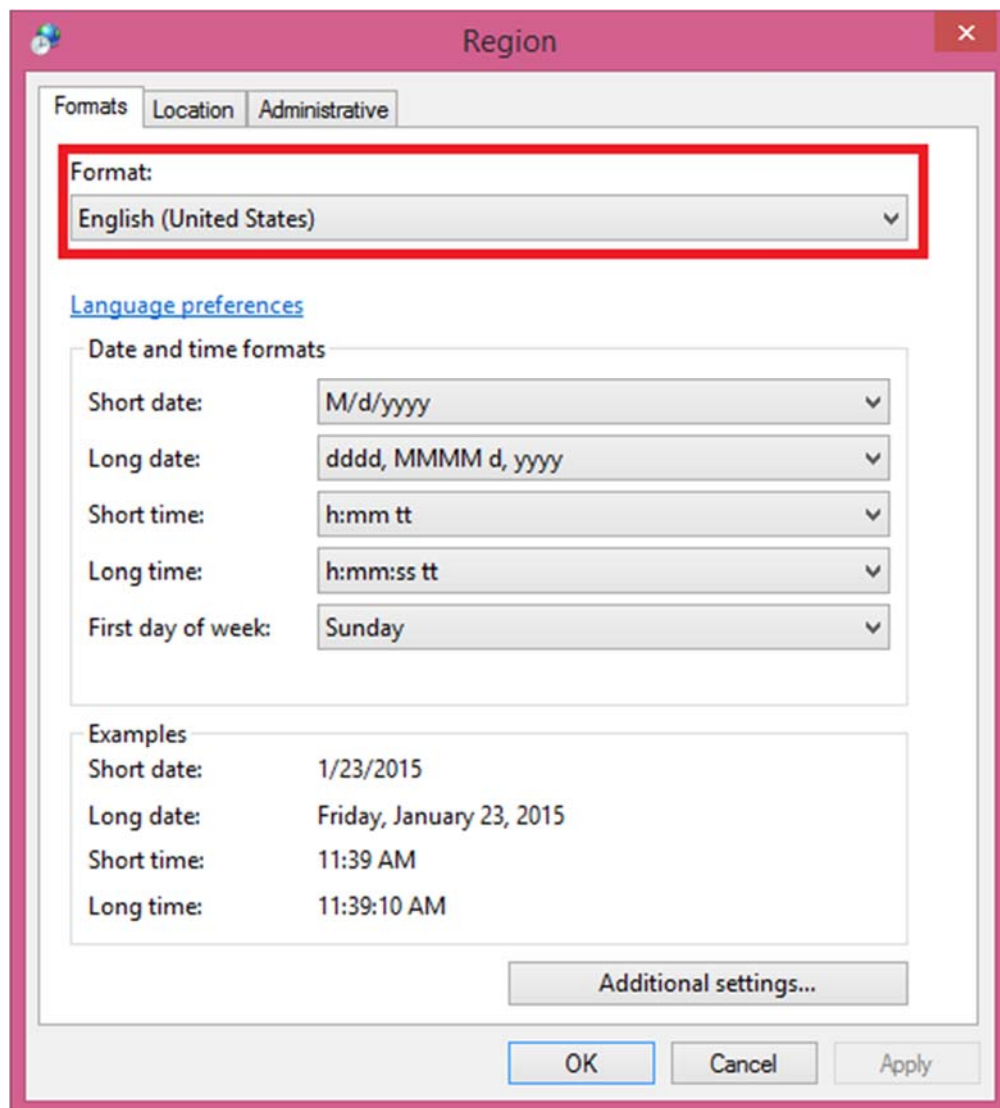
## A. Edison Arduion IDE

Download [Edison Arduion IDE\(winwos version\)](https://communities.intel.com/docs/DOC-23242) <https://communities.intel.com/docs/DOC-23242>

Extract to your local folder.

NOTE: There is a bug with Edison Arduion IDE, you have to change your PC location to U.S to avoid IDE FC.

Control Panel-->Change data, time or number formats-->Format-->English(United States)



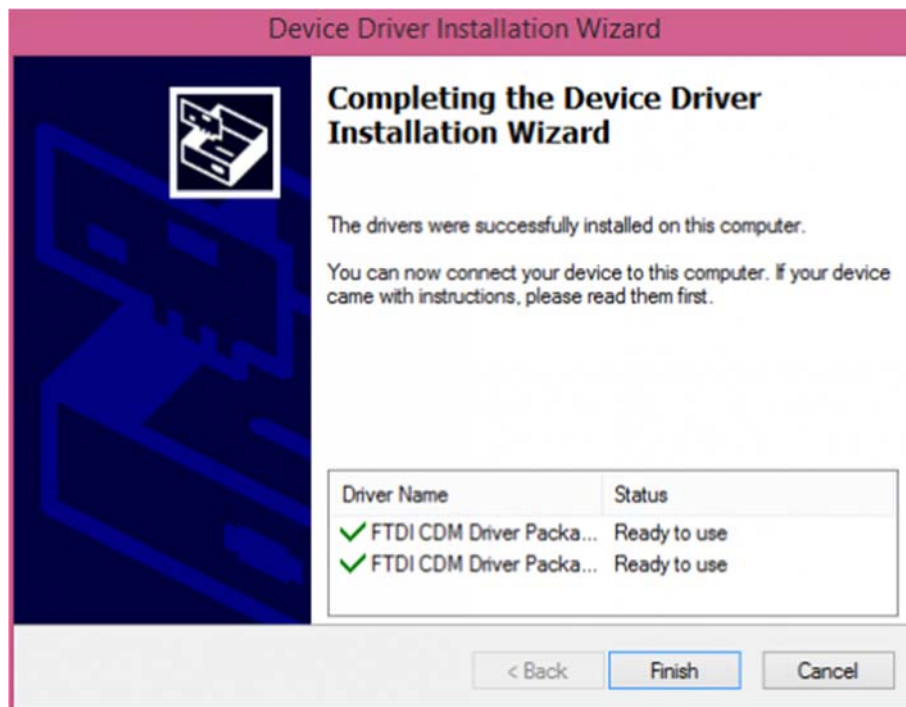
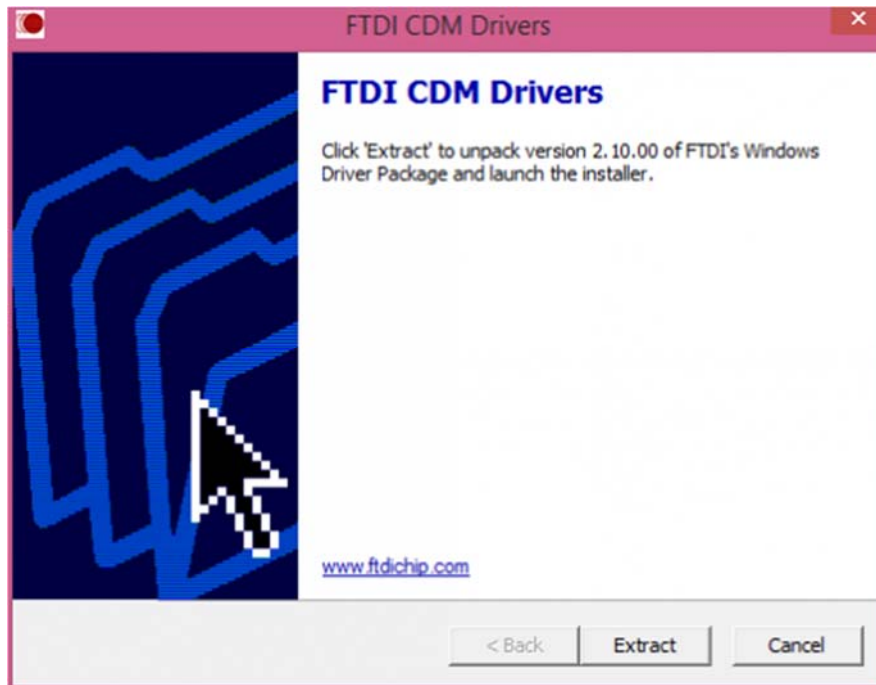
Open Edison Arduion IDE

## B. Install Driver

Download [FTDI drivers](#)

<http://www.ftdichip.com/Drivers/CDM/CDM%20v2.10.00%20WHQL%20Certified.exe>

Install CDM v2.10.00 WHQL Certified.exe



Download [Intel Edison Drivers](https://communities.intel.com/docs/DOC-23242) <https://communities.intel.com/docs/DOC-23242>

## Edison - Software Downloads

版本 28

由 sjaworski 于 2014-9-5 下午12:30 创建, 最后由 intel\_jorge 于 2014-11-14 下午5:35 修改。

### Package release version Arduino 1.5.3 - Intel 1.0.4

See the [Getting Started Guide](#) for step-by-step information on installing the software.

Download the IDE zip file for your operating system (OS). Each OS zip file includes the latest firmware so you can use the IDE to update your board.

Galileo, Edison

Link	IDE Software	Operating System	Intel Board	File Size	File Type
<a href="#">Download</a>	Arduino Software 1.5.3 - Intel 1.0.4	Linux 32 Bit	Galileo, Edison	145MB	.tgz
<a href="#">Download</a>	Arduino Software 1.5.3 - Intel 1.0.4	Linux 64 Bit	Galileo, Edison	149MB	.tgz
<a href="#">Download</a>	Arduino Software 1.5.3 - Intel 1.0.4	Mac OSX	Galileo, Edison	112MB	.zip
<a href="#">Download</a>	Arduino Software 1.5.3 - Intel 1.0.4	Windows	Galileo, Edison	159MB	.7z
<a href="#">Download</a>	Intel customized Arduino IDE 1.5.3 (source code)	N/A	376MB	b22	

Source files, Image and SDK's. Version: **Ret-1-Maint-WW42**. [Release Notes](#).

Link	Software	Operating System	Board	File Size	File Type	Notes
<a href="#">Download</a>	Edison Yocto complete image	Linux - Yocto	Edison	105MB	zip	
<a href="#">Download</a>	Edison SDK Linux 32	Linux	Edison	380MB	zip	
<a href="#">Download</a>	Edison SDK Linux 64	Linux	Edison	382MB	zip	
<a href="#">Download</a>	Edison SDK Mac OSX	OSX	Edison	347MB	zip	
<a href="#">Download</a>	Edison SDK Windows 32	Windows 32	Edison	421MB	zip	
<a href="#">Download</a>	Edison SDK Windows 64	Windows 64	Edison	425MB	zip	
<a href="#">Download</a>	Edison Linux source files	Linux	Edison	34MB	tgz	
<a href="#">Download</a>	Edison GPL/LGPL source files	Linux	Edison	603MB	tar	

### Driver Software

Link	Software	Operating System	Board	File Size	File Type	Notes
<a href="#">Download</a>	Windows Driver setup 1.0.0	Windows	Edison	9MB	exe	

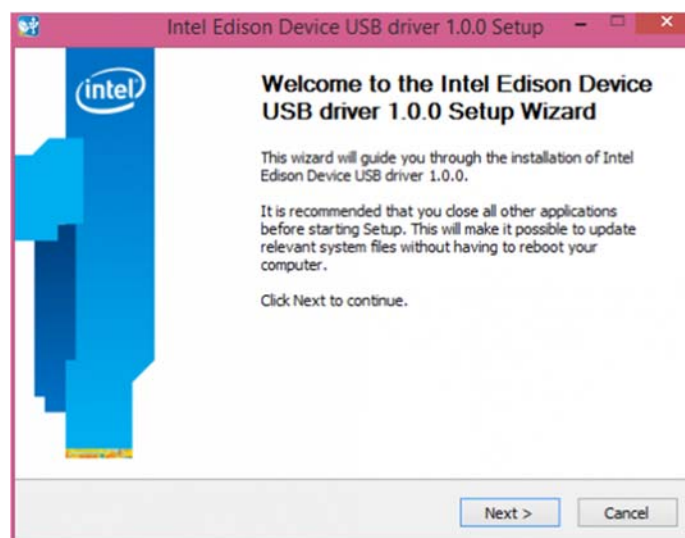
For older versions of the software and images (WW36), visit this [link](#).

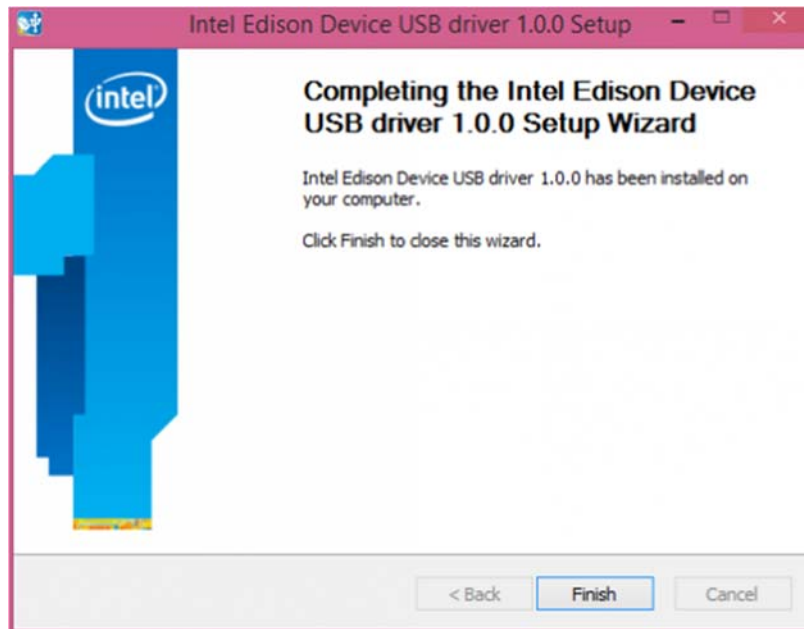
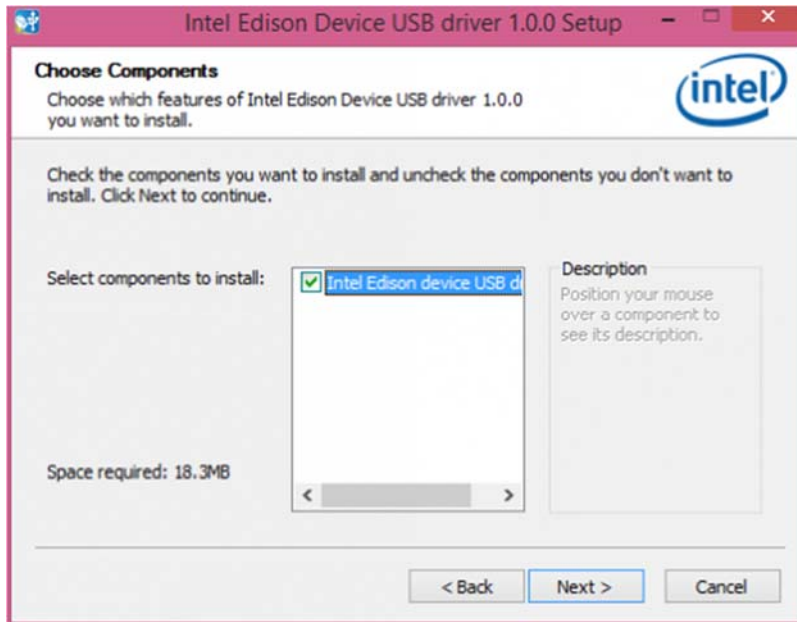
**Note:** As Intel is committed to providing support primarily for the latest software and images, we offer access to these older versions for your convenience only.

122759 查看 分类: 标签: linux, software, drivers, yocto, edison, arduino sw, arduino software

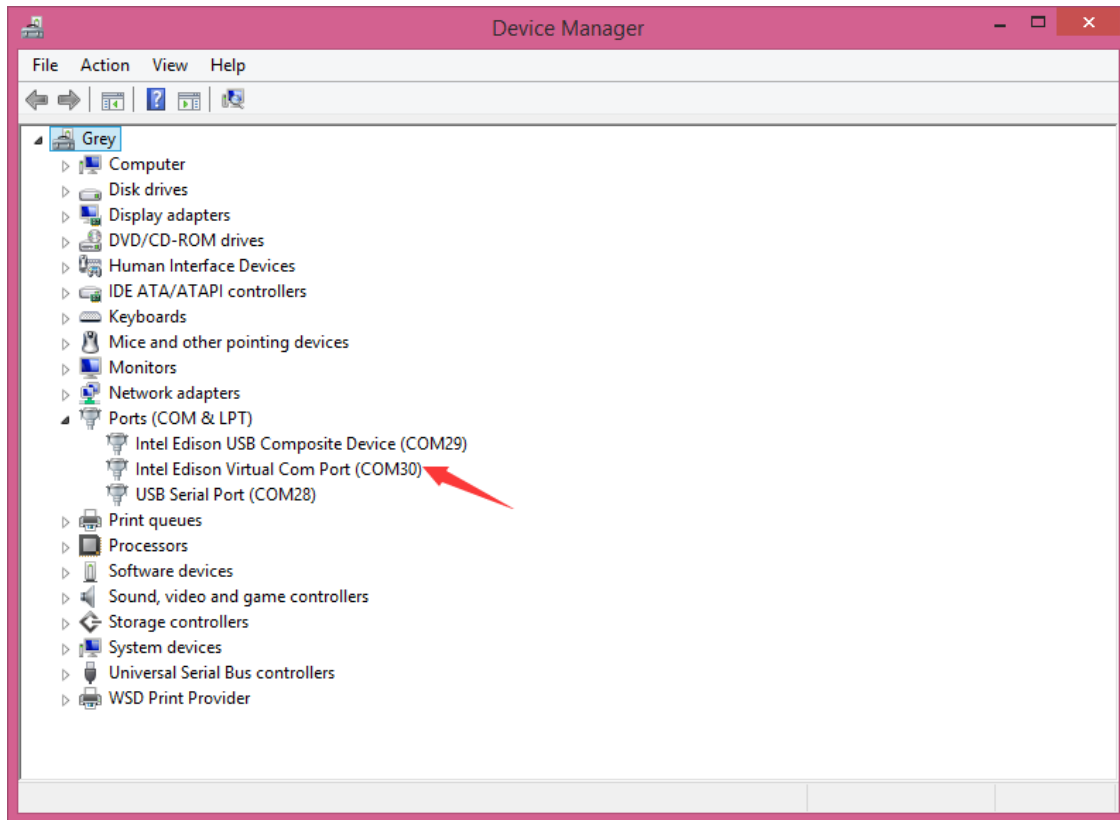
[https://www.dfrobot.com/wiki/index.php/File:DFR0331\\_Edison\\_driver.png](https://www.dfrobot.com/wiki/index.php/File:DFR0331_Edison_driver.png)

Install Edison Driver



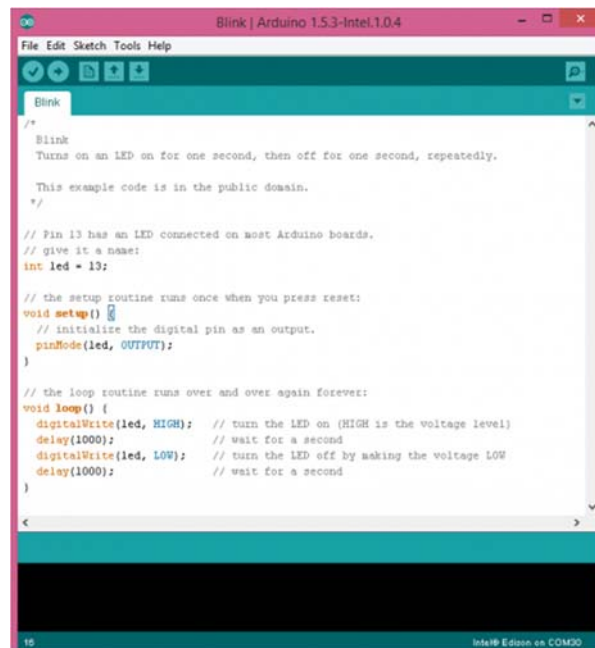


Open the Device Manager, and check Device Driver

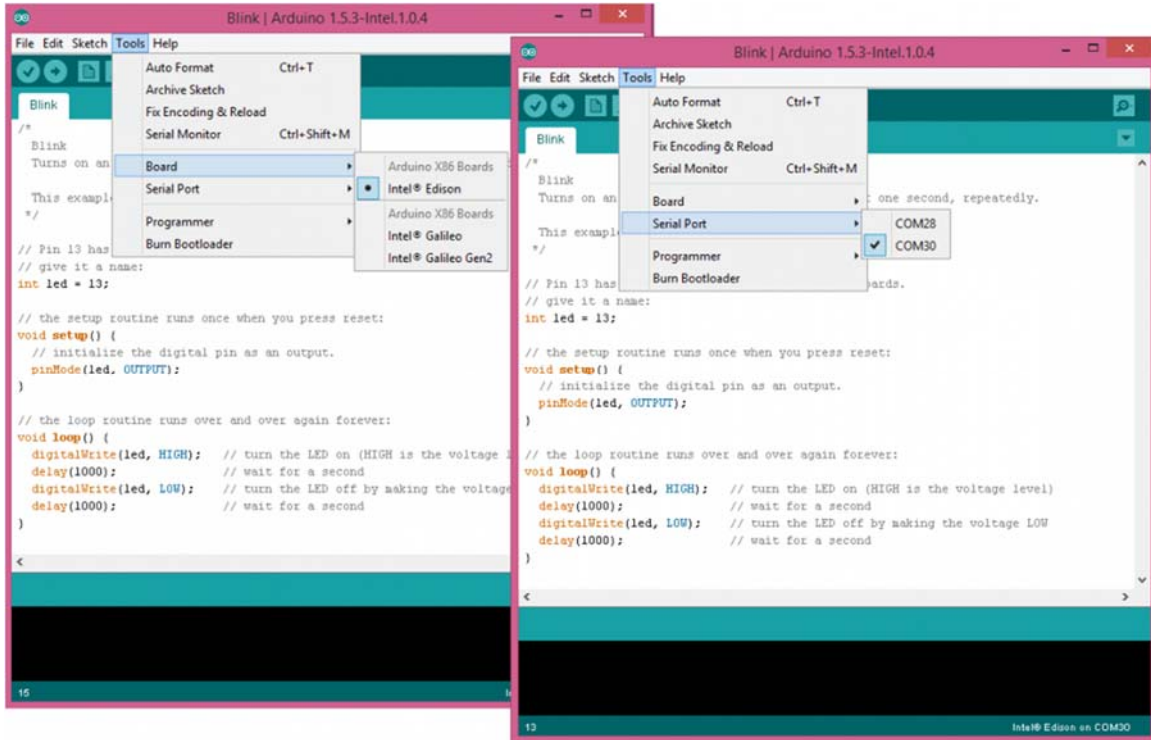


### C.Quick test with the module

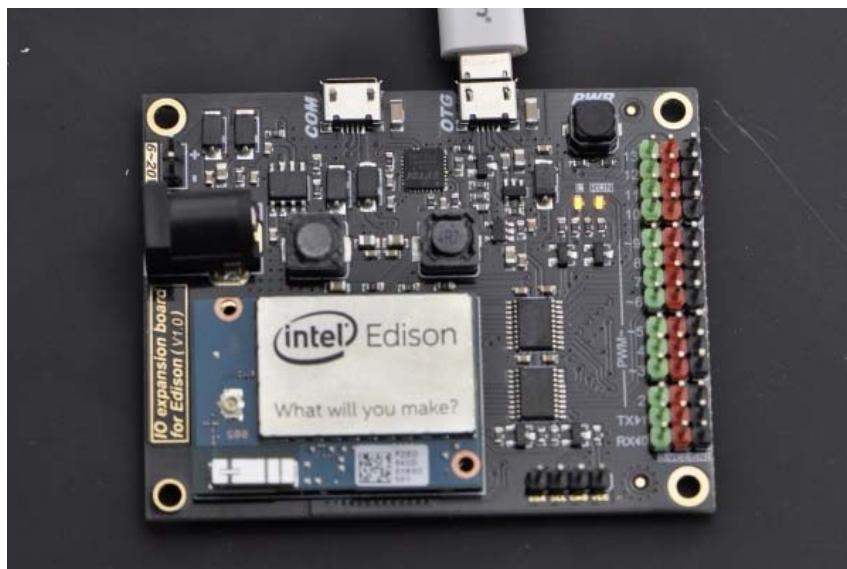
Open Edison Arduino IDE and open a sample code "Blink"



Select Tools-->Board-->Intel Edison  
Select Tools-->Serial Port-->COM xx



When the uploading has been finished, the LED will be flashing once a second.



## Looking for pricing, stock, or lifecycle information?

Click below to explore more details on WIN SOURCE:

 [View DFR0338 on WIN SOURCE](#)

 [DFRobot Information](#)

## Optimize Your Supply Chain with WIN SOURCE Solutions

-  Global Sourcing Solution
-  Obsolete Management
-  Cost Control Management
-  Shortage Management
-  Alternative Solution
-  Excess Inventory Management