



**THE DATASHEET OF
AOC2417**



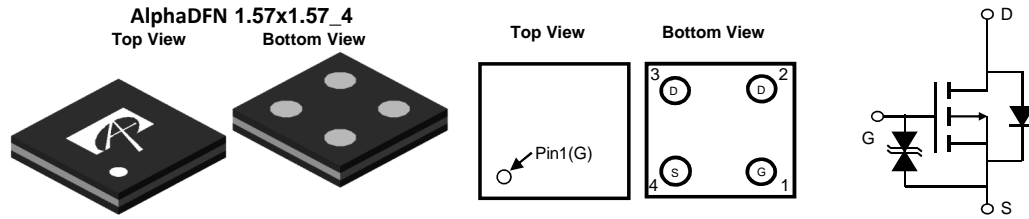
General Description

The AOC2417 uses advanced trench technology to provide excellent $R_{DS(ON)}$, low gate charge and operation with gate voltages as low as 2.5V while retaining a 12V $V_{GS(MAX)}$ rating.

Product Summary

| | |
|-----------------------------------|----------------|
| V_{DS} | -20V |
| I_D (at $V_{GS}=-10V$) | -3.5A |
| $R_{DS(ON)}$ (at $V_{GS}=-10V$) | < 32m Ω |
| $R_{DS(ON)}$ (at $V_{GS}=-4.5V$) | < 38m Ω |
| $R_{DS(ON)}$ (at $V_{GS}=-2.5V$) | < 50m Ω |

Typical ESD protection **HBM Class 2**



Absolute Maximum Ratings $T_A=25^\circ\text{C}$ unless otherwise noted

| Parameter | Symbol | Maximum | Units |
|---|----------------|------------|------------------|
| Drain-Source Voltage | V_{DS} | -20 | V |
| Gate-Source Voltage | V_{GS} | ± 12 | V |
| Source Current (DC) ^{Note1} | I_D | -3.5 | A |
| Source Current (Pulse) ^{Note2} | | | |
| Power Dissipation ^{Note1} | P_D | 0.55 | W |
| Junction and Storage Temperature Range | T_J, T_{STG} | -55 to 150 | $^\circ\text{C}$ |

Thermal Characteristics

| Parameter | Symbol | Typ | Max | Units |
|--|-----------------|-----|-----|--------------------|
| Maximum Junction-to-Ambient ^A | $R_{\theta JA}$ | 140 | 170 | $^\circ\text{C/W}$ |
| Maximum Junction-to-Ambient ^{A,D} | | 190 | 230 | $^\circ\text{C/W}$ |

Note 1. Mounted on minimum pad PCB

Note 2. PW <300 μs pulses, duty cycle 0.5% max

Electrical Characteristics (T_J=25°C unless otherwise noted)

| Symbol | Parameter | Conditions | Min | Typ | Max | Units |
|-----------------------------|------------------------------------|--|------|----------|----------|-------|
| STATIC PARAMETERS | | | | | | |
| BV _{DSS} | Drain-Source Breakdown Voltage | I _D =-250μA, V _{GS} =0V | -20 | | | V |
| I _{DSS} | Zero Gate Voltage Drain Current | V _{DS} =-20V, V _{GS} =0V T _J =55°C | | | -1 -5 | μA |
| I _{GSS} | Gate-Body leakage current | V _{DS} =0V, V _{GS} =±12V | | | ±10 | μA |
| V _{GS(th)} | Gate Threshold Voltage | V _{DS} =V _{GS} , I _D =-250μA | -0.6 | -0.98 | -1.4 | V |
| R _{DS(on)} | Static Drain-Source On-Resistance | V _{GS} =-10V, I _D =-1.5A T _J =125°C | | 26 36 | 32 44 | mΩ |
| | | V _{GS} =-4.5V, I _D =-1A | | 29 | 38 | mΩ |
| | | V _{GS} =-2.5V, I _D =-1A | | 37 | 50 | mΩ |
| g _{FS} | Forward Transconductance | V _{DS} =-5V, I _D =-1.5A | | 12 | | S |
| V _{SD} | Diode Forward Voltage | I _S =-1A, V _{GS} =0V | | -0.68 | -1 | V |
| DYNAMIC PARAMETERS | | | | | | |
| C _{iss} | Input Capacitance | V _{GS} =0V, V _{DS} =-10V, f=1MHz | | 1355 | | pF |
| C _{oss} | Output Capacitance | | | 225 | | pF |
| C _{rss} | Reverse Transfer Capacitance | | | 150 | | pF |
| R _g | Gate resistance | V _{GS} =0V, V _{DS} =0V, f=1MHz | | 15 | | Ω |
| SWITCHING PARAMETERS | | | | | | |
| Q _{g(10V)} | Total Gate Charge | V _{GS} =-10V, V _{DS} =-10V, I _D =-1.5A | | 28 | 40 | nC |
| Q _{g(4.5V)} | Total Gate Charge | | | 14 | 20 | nC |
| Q _{gs} | Gate Source Charge | | | 2.5 | | nC |
| Q _{gd} | Gate Drain Charge | | | 4 | | nC |
| t _{D(on)} | Turn-On DelayTime | V _{GS} =-10V, V _{DS} =-10V, R _L =6.67Ω, R _{GEN} =3Ω | | 7 | | ns |
| t _r | Turn-On Rise Time | | | 6 | | ns |
| t _{D(off)} | Turn-Off DelayTime | | | 190 | | ns |
| t _f | Turn-Off Fall Time | | | 60 | | ns |
| t _{rr} | Body Diode Reverse Recovery Time | I _F =-1.5A, di/dt=100A/μs | | 20 | | ns |
| Q _{rr} | Body Diode Reverse Recovery Charge | I _F =-1.5A, di/dt=100A/μs | | 6 | | nC |

THIS PRODUCT HAS BEEN DESIGNED AND QUALIFIED FOR THE CONSUMER MARKET. APPLICATIONS OR USES AS CRITICAL COMPONENTS IN LIFE SUPPORT DEVICES OR SYSTEMS ARE NOT AUTHORIZED. AOS DOES NOT ASSUME ANY LIABILITY ARISING OUT OF SUCH APPLICATIONS OR USES OF ITS PRODUCTS. AOS RESERVES THE RIGHT TO IMPROVE PRODUCT DESIGN, FUNCTIONS AND RELIABILITY WITHOUT NOTICE.

TYPICAL ELECTRICAL AND THERMAL CHARACTERISTICS

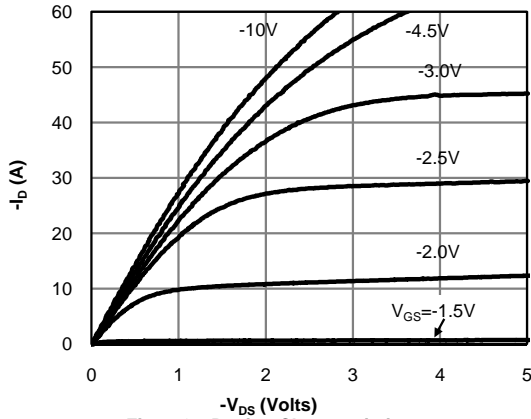


Fig 1: On-Region Characteristics

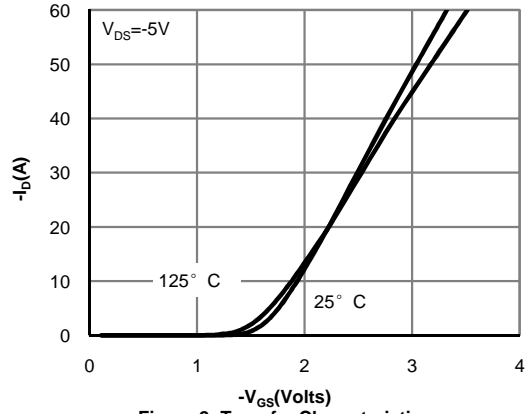


Figure 2: Transfer Characteristics

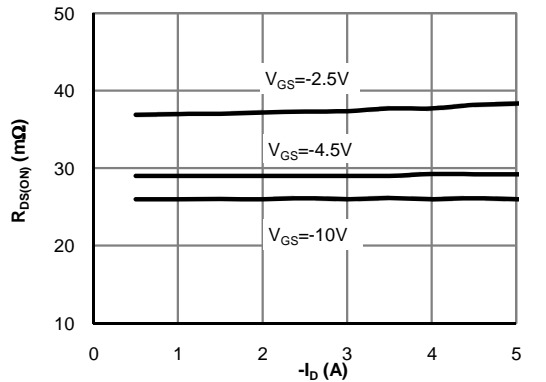


Figure 3: On-Resistance vs. Drain Current and Gate Voltage (Note E)

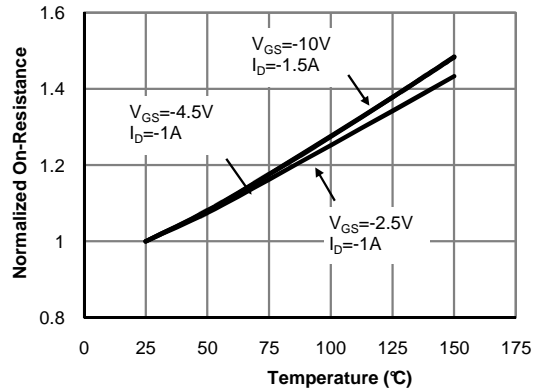


Figure 4: On-Resistance vs. Junction Temperature (Note E)

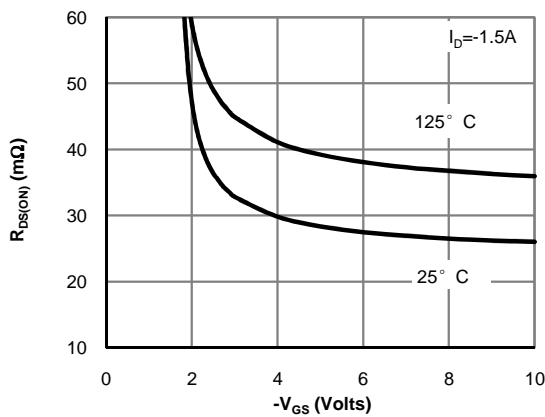


Figure 5: On-Resistance vs. Gate-Source Voltage (Note E)

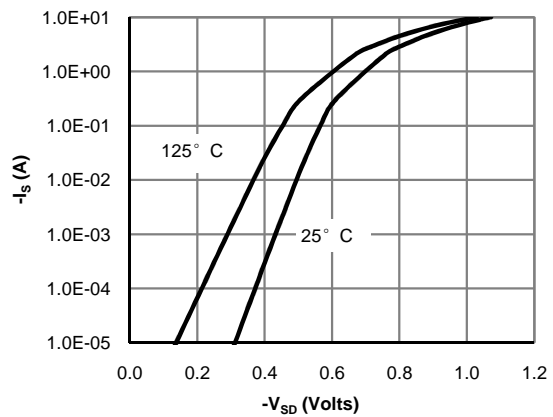


Figure 6: Body-Diode Characteristics (Note E)

TYPICAL ELECTRICAL AND THERMAL CHARACTERISTICS

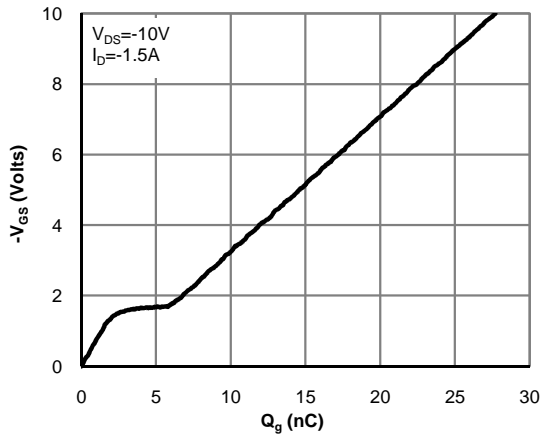


Figure 7: Gate-Charge Characteristics

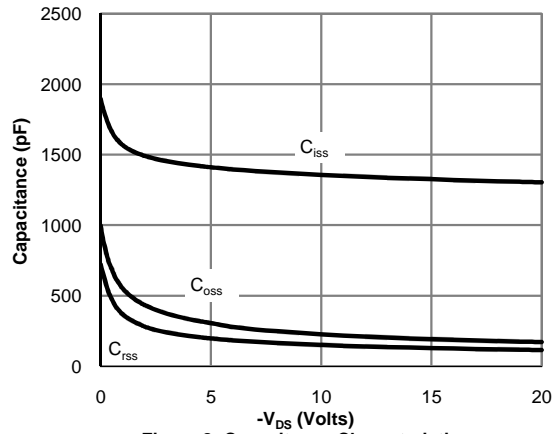


Figure 8: Capacitance Characteristics

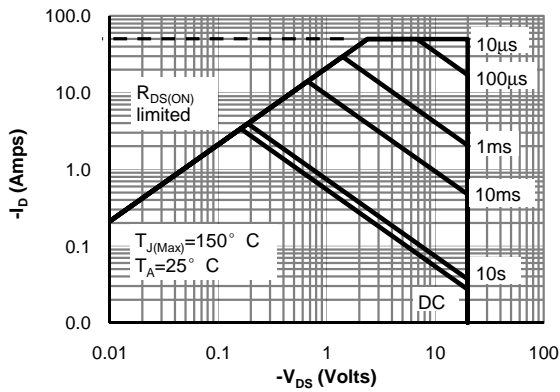


Figure 9: Maximum Forward Biased Safe Operating Area

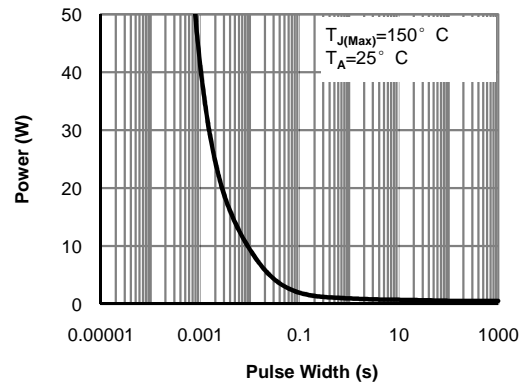


Figure 10: Single Pulse Power Rating Junction-to-Ambient

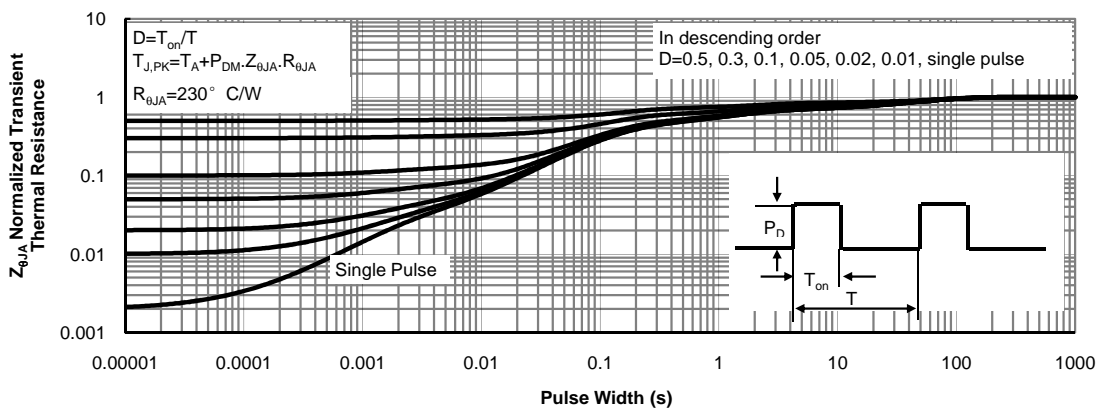
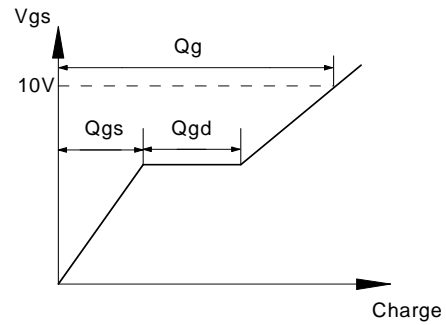
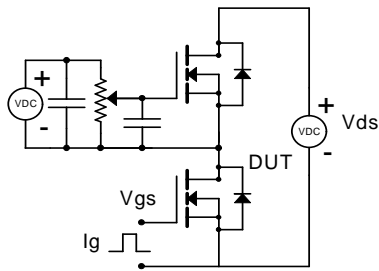
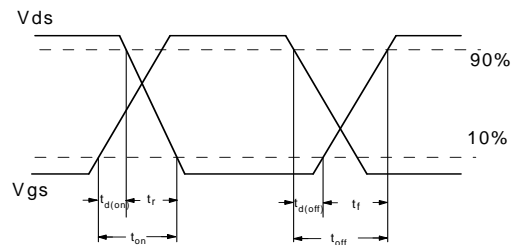
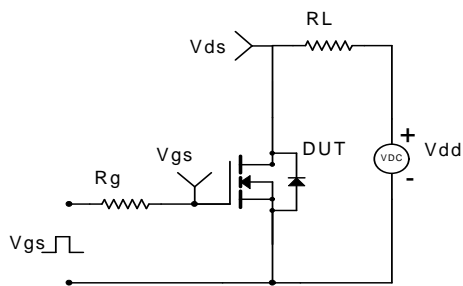


Figure 11: Normalized Maximum Transient Thermal Impedance

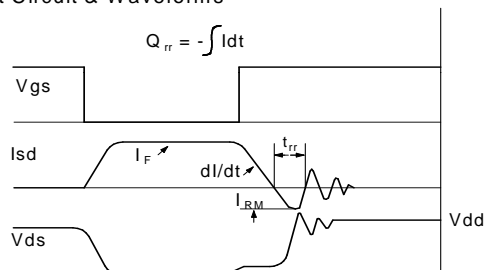
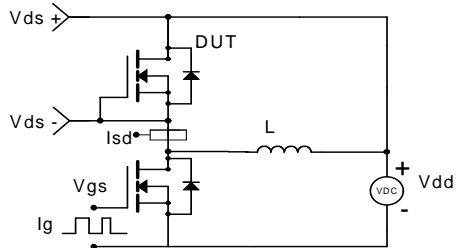
Gate Charge Test Circuit & Waveform



Resistive Switching Test Circuit & Waveforms





Diode Recovery Test Circuit & Waveforms



Looking for pricing, stock, or lifecycle information?

Click below to explore more details on WIN SOURCE:

-  [View AOC2417 on WIN SOURCE](#)
-  [Alpha & Omega Semiconductor Inc. Information](#)

Optimize Your Supply Chain with WIN SOURCE Solutions

-  Global Sourcing Solution
-  Obsolete Management
-  Cost Control Management
-  Shortage Management
-  Alternative Solution
-  Excess Inventory Management