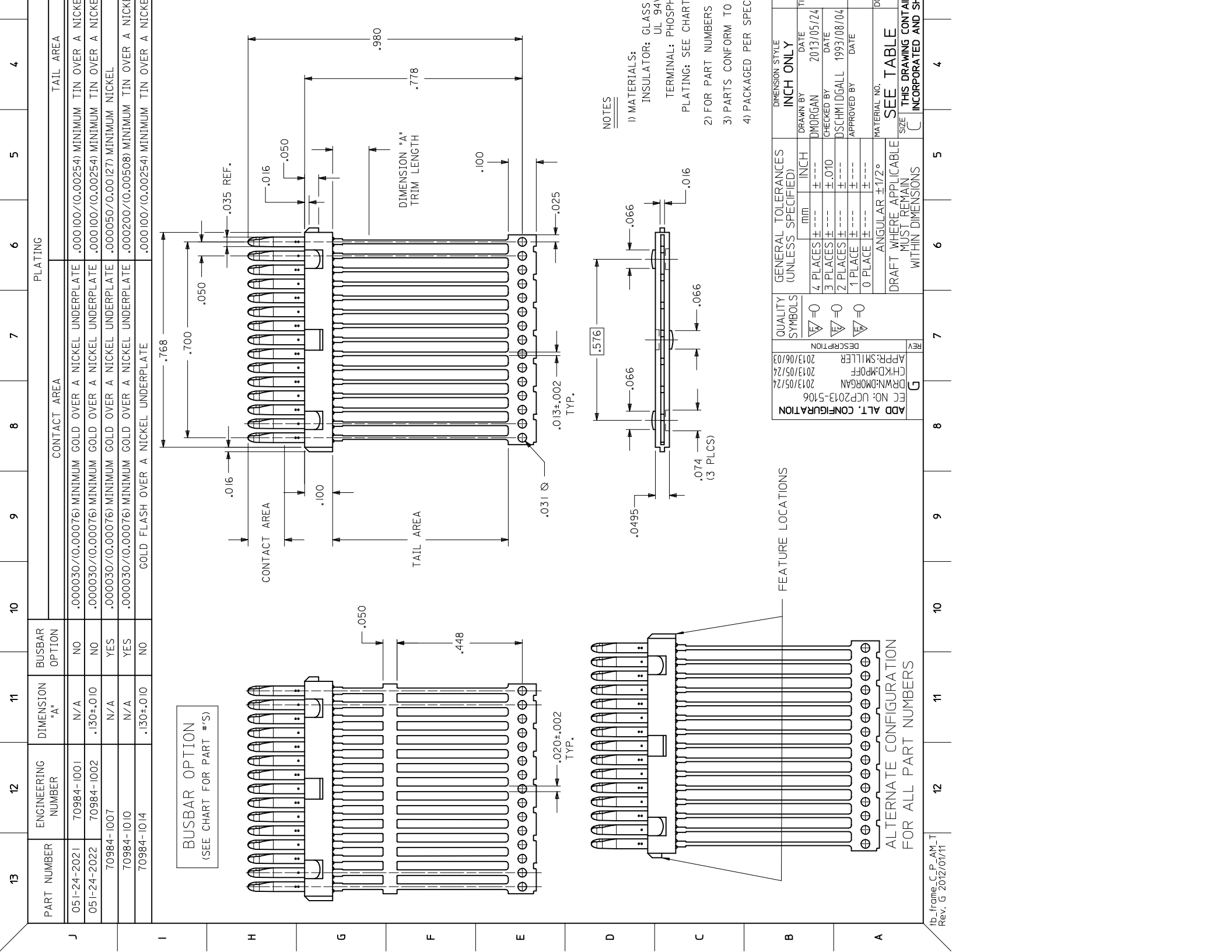




THE DATASHEET OF
51242022

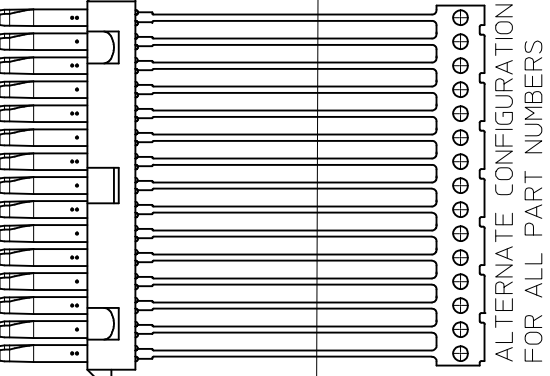




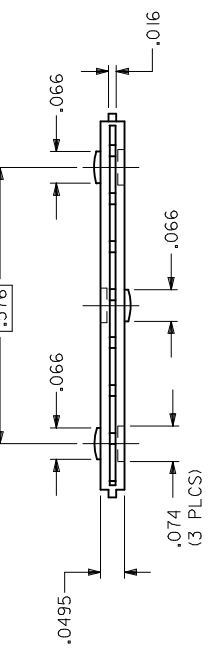
PLATING

PART NUMBER	ENGINEERING NUMBER	DIMENSION "A"	BUSBAR OPTION	CONTACT AREA				TAIL AREA			
				CONTACT AREA				TAIL AREA			
051-24-2021	70984-1001	N/A	NO	.000030/(0.00076) MINIMUM	GOLD OVER A NICKEL UNDERPLATE	.000100/(0.00254) MINIMUM	TIN OVER A NICKEL	.000100/(0.00254) MINIMUM	TIN OVER A NICKEL	.000100/(0.00254) MINIMUM	TIN OVER A NICKEL
051-24-2022	70984-1002	.130±.010	NO	.000030/(0.00076) MINIMUM	GOLD OVER A NICKEL UNDERPLATE	.000100/(0.00254) MINIMUM	TIN OVER A NICKEL	.000100/(0.00254) MINIMUM	TIN OVER A NICKEL	.000100/(0.00254) MINIMUM	TIN OVER A NICKEL
70984-1007		N/A	YES	.000030/(0.00076) MINIMUM	GOLD OVER A NICKEL UNDERPLATE	.000050/(0.00127) MINIMUM	NICKEL	.000050/(0.00127) MINIMUM	NICKEL	.000050/(0.00127) MINIMUM	NICKEL
70984-1010		N/A	YES	.000030/(0.00076) MINIMUM	GOLD OVER A NICKEL UNDERPLATE	.000200/(0.00508) MINIMUM	TIN OVER A NICKEL	.000200/(0.00508) MINIMUM	TIN OVER A NICKEL	.000200/(0.00508) MINIMUM	TIN OVER A NICKEL
70984-1014		.130±.010	NO	GOLD FLASH OVER A NICKEL UNDERPLATE							

BUSBAR OPTION
(SEE CHART FOR PART #'S)



ALTERNATE CONFIGURATION
FOR ALL PART NUMBERS



- NOTES
- 1) MATERIALS: GLASS UL 94V0 INSULATOR; PHOSPHOR BRONZE TERMINAL; SEE CHART FOR PART NUMBERS
 - 2) PARTS CONFORM TO
 - 3) PARTS CONFORM TO
 - 4) PACKAGED PER SPEC

FEATURE LOCATIONS

QUALITY SYMBOLS	GENERAL TOLERANCES (UNLESS SPECIFIED)	DIMENSION STYLE
$\nabla = 0$	4 PLACES ± .005	INCH ONLY
$\nabla = 0$	3 PLACES ± .010	DRAWN BY DMORGAN
$\nabla = 0$	2 PLACES ± .010	CHECKED BY DSCHMIDGALL
$\nabla = 0$	1 PLACE ± .010	APPROVED BY DATE
$\nabla = 0$	0 PLACE ± .010	DATE
ANGULAR ±1/2°		MATERIAL NO. 100
DRAFT WHERE APPLICABLE MUST REMAIN WITHIN DIMENSIONS		SEE TABLE
THIS DRAWING CONTAINS INCORPORATED AND S		

ADD ALT. CONFIGURATION	REV
FC NO: UCP2013-5106 DRWN:DMORGAN CHKD:MPOFF APP:SMILLER 2013/05/24 2013/06/03	G

Looking for pricing, stock, or lifecycle information?

Click below to explore more details on WIN SOURCE:

 [View 51242022 on WIN SOURCE](#)

 [Molex, LLC Information](#)

Optimize Your Supply Chain with WIN SOURCE Solutions

-  Global Sourcing Solution
-  Obsolete Management
-  Cost Control Management
-  Shortage Management
-  Alternative Solution
-  Excess Inventory Management