



**THE DATASHEET OF  
MAX639EPA+**





# 5V/3.3V/3V/Adjustable, High-Efficiency, Low $I_Q$ , Step-Down DC-DC Converters

## General Description

The MAX639/MAX640/MAX653 step-down switching regulators provide high efficiency over a wide range of load currents, delivering up to 225mA. A current-limiting pulse-frequency-modulated (PFM) control scheme gives the devices the benefits of pulse-width-modulated (PWM) converters (high efficiency at heavy loads), while using only 10 $\mu$ A of supply current (vs. 2mA to 10mA for PWM converters). The result is high efficiency over a wide range of loads.

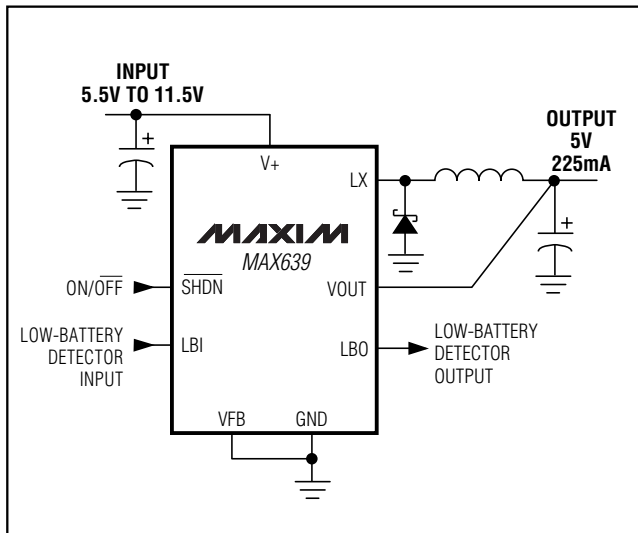
The MAX639/MAX640/MAX653 input range is 4V to 11.5V, and the devices provide lower preset output voltages of 5V, 3.3V, and 3V, respectively. Or, the output can be user-adjusted to any voltage from 1.3V to the input voltage.

The MAX639/MAX640/MAX653 have an internal 1A power MOSFET switch, making them ideal for minimum-component, low- and medium-power applications. For increased output drive capability, use the MAX649/MAX651/MAX652 step-down controllers, which drive an external P-channel FET to deliver up to 5W.

## Applications

- 9V Battery to 5V, 3.3V, or 3V Conversion
- High-Efficiency Linear Regulator Replacement
- Portable Instruments and Handy-Terminals
- 5V-to-3.3V Converters

## Typical Operating Circuit



## Features

- ◆ High Efficiency for a Wide Range of Load Currents
- ◆ 10 $\mu$ A Quiescent Current
- ◆ Output Currents Up to 225mA
- ◆ Preset or Adjustable Output Voltage:
  - 5.0V (MAX639)
  - 3.3V (MAX640)
  - 3.0V (MAX653)
- ◆ Low-Battery Detection Comparator
- ◆ Current-Limiting PFM Control Scheme

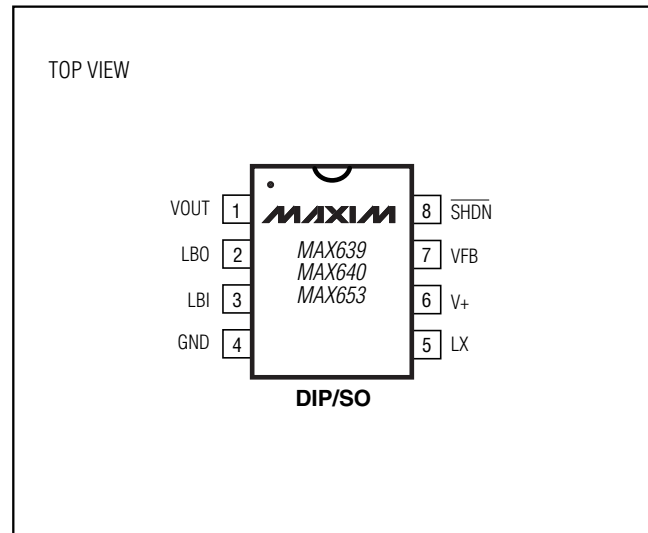
## Ordering Information

| PART      | TEMP RANGE      | PIN-PACKAGE   |
|-----------|-----------------|---------------|
| MAX639CPA | 0°C to +70°C    | 8 Plastic DIP |
| MAX639CSA | 0°C to +70°C    | 8 SO          |
| MAX639C/D | 0°C to +70°C    | Dice*         |
| MAX639EPA | -40°C to +85°C  | 8 Plastic DIP |
| MAX639ESA | -40°C to +85°C  | 8 SO          |
| MAX639MJA | -55°C to +125°C | 8 CERDIP      |

Ordering Information continued on last page.

\*Contact factory for dice specifications.

## Pin Configuration



# 5V/3.3V/3V/Adjustable, High-Efficiency, Low I<sub>Q</sub>, Step-Down DC-DC Converters

## ABSOLUTE MAXIMUM RATINGS

|   |                           |
|---|---------------------------|
| V+  | 12V                       |
| LX  | (V+ - 12V) to (V+ + 0.3V) |
| LBI, LBO, VFB, SHDN, VOUT                             | -0.3V to (V+ + 0.3V)      |
| LX Output Current (Note 1)                            | 1A                        |
| LBO Output Current                                    | 10mA                      |
| Continuous Power Dissipation (T <sub>A</sub> = +70°C) |                           |
| Plastic DIP (derate 9.09mW/°C above +70°C)            | 727mW                     |
| SO (derate 5.88mW/°C above +70°C)                     | 471mW                     |
| CERDIP (derate 8.00mW/°C above +70°C)                 | 640mW                     |

Operating Temperature Ranges:

|                                   |                 |
|-----------------------------------|-----------------|
| MAX639C_                          | 0°C to +70°C    |
| MAX639E_                          | -40°C to +85°C  |
| MAX639MJA                         | -55°C to +125°C |
| Storage Temperature Range         | -65°C to +160°C |
| Lead Temperature (soldering, 10s) | +300°C          |

**Note 1:** Peak inductor current must be limited to 600mA by using an inductor of 100µH or greater.

Stresses beyond those listed under "Absolute Maximum Ratings" may cause permanent damage to the device. These are stress ratings only, and functional operation of the device at these or any other conditions beyond those indicated in the operational sections of the specifications is not implied. Exposure to absolute maximum rating conditions for extended periods may affect device reliability.

## ELECTRICAL CHARACTERISTICS

(V+ = 9V for the MAX639, V+ = 5V for the MAX640/MAX653, I<sub>LOAD</sub> = 0mA, T<sub>A</sub> = T<sub>MIN</sub> to T<sub>MAX</sub>, typical values are at T<sub>A</sub> = +25°C, unless otherwise noted.)

| PARAMETER               | CONDITIONS                          |  | MIN  | TYP  | MAX  | UNITS |
|-------------------------|-------------------------------------|--|------|------|------|-------|
| Supply Voltage          |                                     |  | 4.0  |      | 11.5 | V     |
| Supply Current          | SHDN = V+, no load                  |  |      | 10   | 20   | µA    |
| Output Voltage (Note 2) | MAX639                              | V+ = 6.0V to 11.5V, 0mA < I <sub>OUT</sub> < 100mA | 4.80 | 5.00 | 5.20 | V     |
|                         | MAX640                              | V+ = 4.0V to 11.5V, 0mA < I <sub>OUT</sub> < 100mA | 3.17 | 3.30 | 3.43 |       |
|                         | MAX653                              | V+ = 4.0V to 11.5V, 0mA < I <sub>OUT</sub> < 100mA | 2.88 | 3.00 | 3.12 |       |
| Dropout Voltage         | I <sub>OUT</sub> = 100mA, L = 100µH |  |      | 0.5  |      | V     |
| Efficiency              | MAX639                              | I <sub>OUT</sub> = 100mA, L = 100µH                |      | 91   |      | %     |
|                         |                                     | I <sub>OUT</sub> = 25mA, L = 470µH                 |      | 94   |      |       |
|                         | MAX640                              | I <sub>OUT</sub> = 100mA, L = 100µH                |      | 87   |      |       |
|                         |                                     | I <sub>OUT</sub> = 25mA, L = 470µH                 |      | 91   |      |       |
|                         | MAX653                              | I <sub>OUT</sub> = 100mA, L = 100µH                |      | 85   |      |       |
|                         |                                     | I <sub>OUT</sub> = 25mA, L = 470µH                 |      | 89   |      |       |
| Switch On-Time          | MAX639                              | V+ = 9V, V <sub>OUT</sub> = 5V                     | 10.6 | 12.5 | 14.4 | µs    |
|                         |                                     | V+ = 6V, V <sub>OUT</sub> = 3V                     | 14.2 | 16.7 | 19.2 |       |
|                         | MAX640                              | V+ = 9V, V <sub>OUT</sub> = 3.3V                   | 7.5  | 8.8  | 10.1 |       |
|                         |                                     | V+ = 4V, V <sub>OUT</sub> = 3.3V                   | 60.7 | 71.4 | 82.1 |       |
|                         | MAX653                              | V+ = 9V, V <sub>OUT</sub> = 3V                     | 7.1  | 8.3  | 9.5  |       |
|                         |                                     | V+ = 4V, V <sub>OUT</sub> = 3V                     | 42.5 | 50.0 | 57.5 |       |
| Switch Off-Time         | MAX639                              | V+ = 9V, V <sub>OUT</sub> = 5V                     | 9.0  | 11.7 | 13.5 | µs    |
|                         |                                     | V+ = 6V, V <sub>OUT</sub> = 3V                     | 16.6 | 19.5 | 22.4 |       |
|                         | MAX640                              | V+ = 9V, V <sub>OUT</sub> = 3.3V                   | 13.3 | 15.6 | 17.9 |       |
|                         |                                     | V+ = 4V, V <sub>OUT</sub> = 3.3V                   | 13.3 | 15.6 | 17.9 |       |
|                         | MAX653                              | V+ = 9V, V <sub>OUT</sub> = 3V                     | 14.6 | 17.2 | 19.8 |       |
|                         |                                     | V+ = 4V, V <sub>OUT</sub> = 3V                     | 14.6 | 17.2 | 19.8 |       |

# 5V/3.3V/3V/Adjustable, High-Efficiency, Low $I_Q$ , Step-Down DC-DC Converters

MAX639/MAX640/MAX653

## ELECTRICAL CHARACTERISTICS (continued)

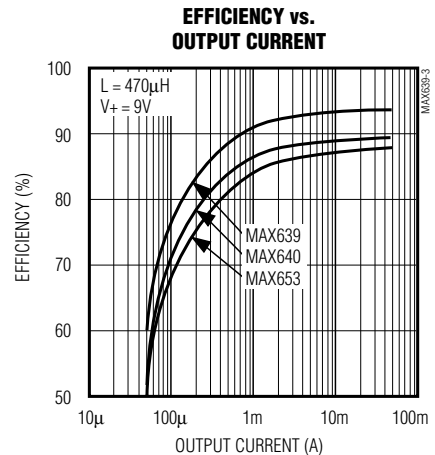
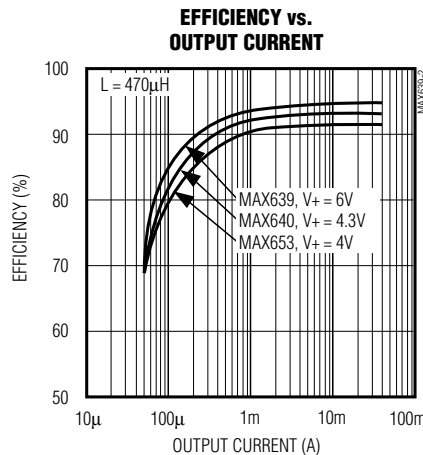
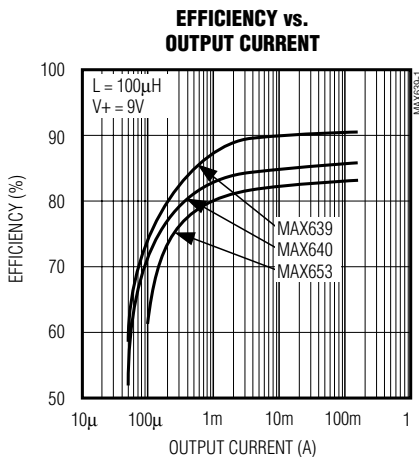
( $V_+$  = 9V for the MAX639,  $V_+$  = 5V for the MAX640/MAX653,  $I_{LOAD}$  = 0mA,  $T_A$  =  $T_{MIN}$  to  $T_{MAX}$ , typical values are at  $T_A$  = +25°C, unless otherwise noted.)

| PARAMETER                | CONDITIONS   | MIN                            | TYP   | MAX  | UNITS    |
|--------------------------|--|--------------------------------|-------|------|----------|
| LX Switch On-Resistance  | $V_+$ = 9V, $T_A$ = +25°C, MAX639/MAX640/MAX653            |                                | 0.8   | 1.5  | $\Omega$ |
|                          | $V_+$ = 6V, $T_A$ = $T_{MIN}$ to $T_{MAX}$ , MAX639        |                                |       | 2.5  |          |
|                          | $V_+$ = 4V, $T_A$ = $T_{MIN}$ to $T_{MAX}$ , MAX640/MAX653 |                                |       | 2.8  |          |
| LX Switch Leakage        | $V_+$ = 11.5V, $V_{LX}$ = 0V                               | $T_A$ = +25°C                  | 0.003 | 1.0  | $\mu A$  |
|                          |  | $T_A$ = $T_{MIN}$ to $T_{MAX}$ |       | 30.0 |          |
| VFB Bias Current         | VFB = 2V   |                                | 4.0   | 15.0 | nA       |
| VFB Dual-Mode Trip Point |  |                                | 50    |      | mV       |
| VFB Threshold            | MAX6_ _C   | 1.26                           | 1.28  | 1.30 | V        |
|                          | MAX6_ _E/M   | 1.24                           | 1.28  | 1.32 |          |
| LBI Bias Current         | $V_{LBI}$ = 2V   |                                | 2     | 10   | nA       |
| LBI Threshold            | MAX6_ _C   | 1.26                           | 1.28  | 1.30 | V        |
|                          | MAX6_ _E/M   | 1.24                           | 1.28  | 1.32 |          |
| LBO Sink Current         | $V_{LBO}$ = 0.4V   | MAX639                         | 0.8   | 2.5  | mA       |
|                          |  | MAX640/MAX653                  | 0.4   | 1.2  |          |
| LBO Leakage Current      | $V_{LBO}$ = 11.5V  |                                | 0.001 | 0.1  | $\mu A$  |
| LBO Delay                | 50mV overdrive   |                                | 25    |      | $\mu s$  |
| SHDN Threshold           |  | 0.80                           | 1.15  | 2.00 | V        |
| SHDN Pull-Up Current     | $\overline{SHDN}$ = 0V                                     | 0.10                           | 0.20  | 0.40 | $\mu A$  |

**Note 2:** Output guaranteed by correlation to measurements of device parameters (i.e., switch on-resistance, on-times, off-times, and output voltage trip points).

## Typical Operating Characteristics

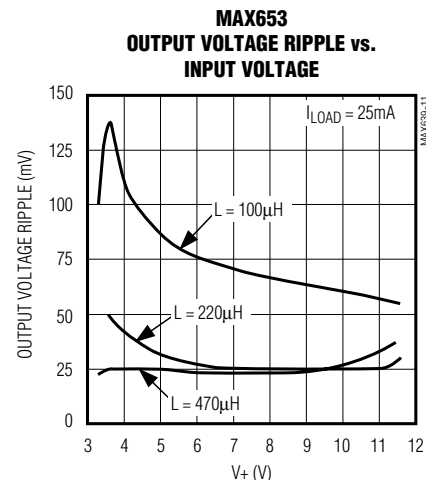
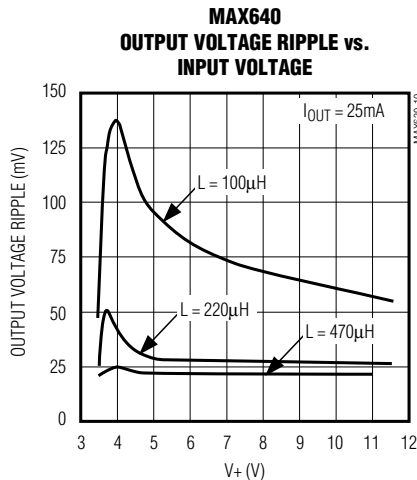
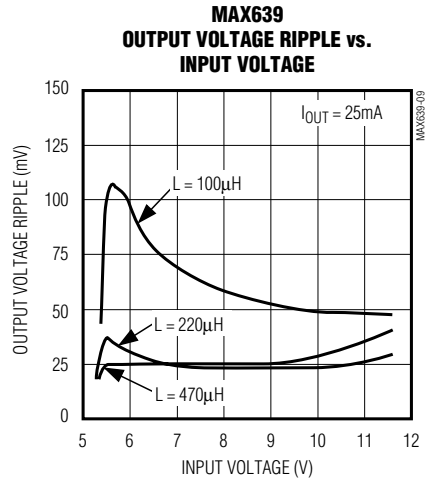
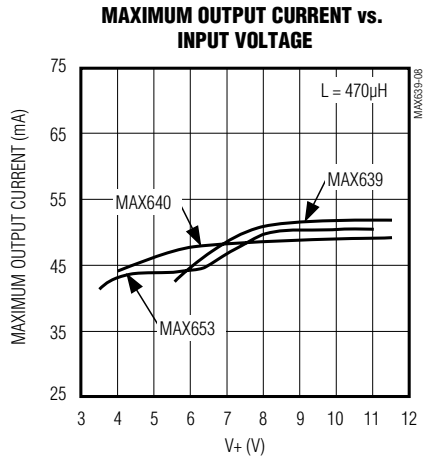
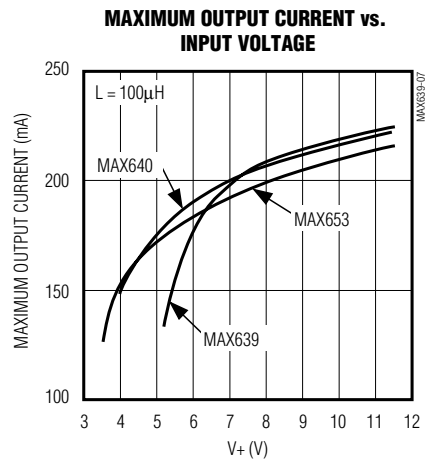
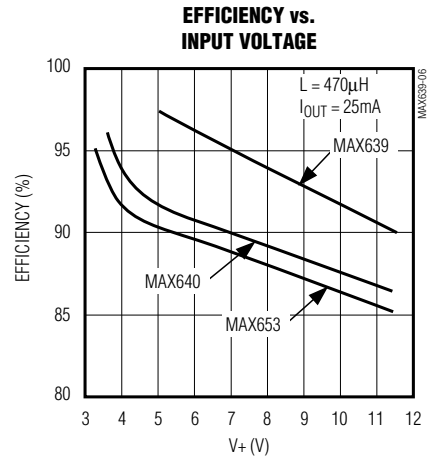
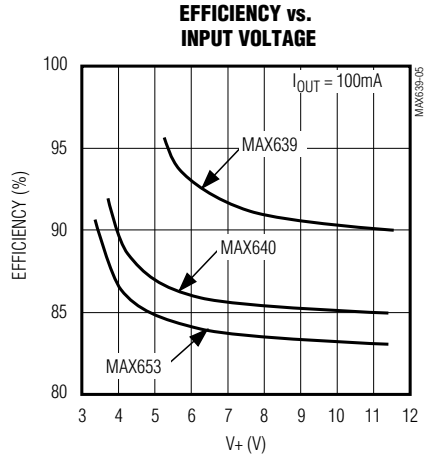
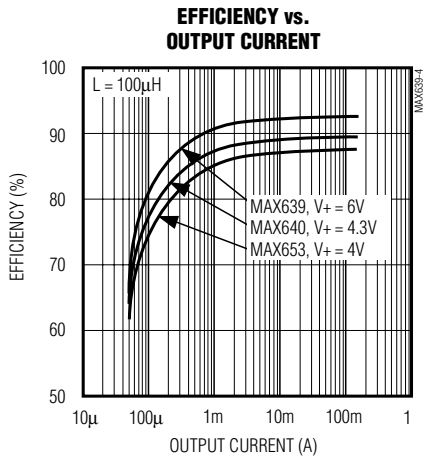
(Circuit of Figure 3, internal feedback,  $L$  = 100 $\mu H$ ,  $T_A$  = +25°C, unless otherwise noted.)



# 5V/3.3V/3V/Adjustable, High-Efficiency, Low $I_Q$ , Step-Down DC-DC Converters

## Typical Operating Characteristics (continued)

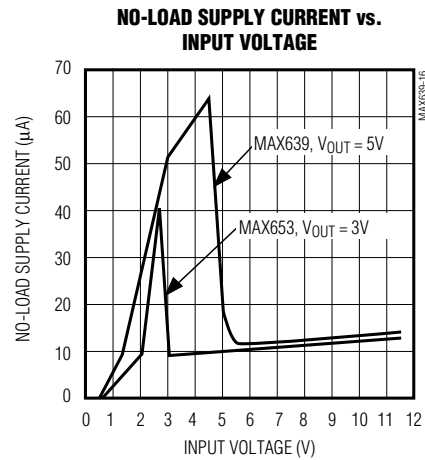
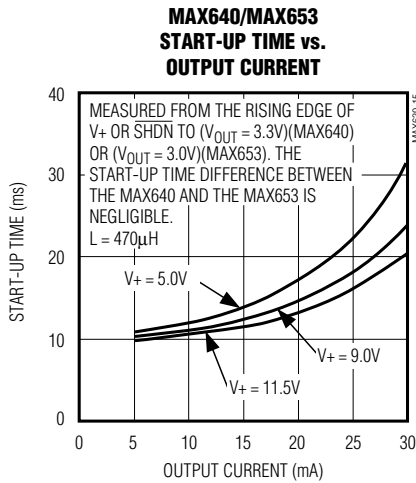
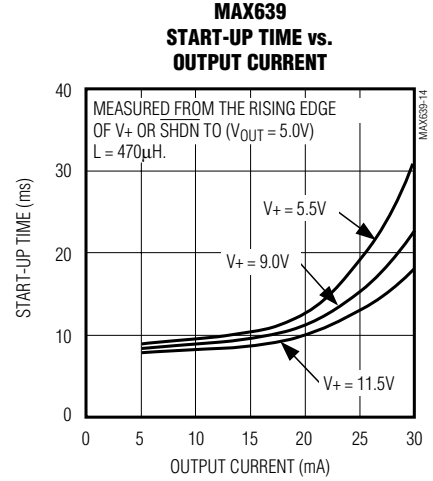
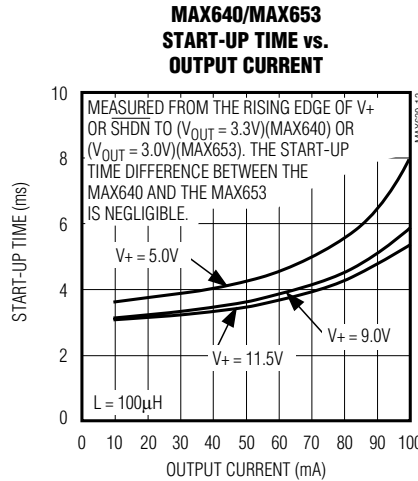
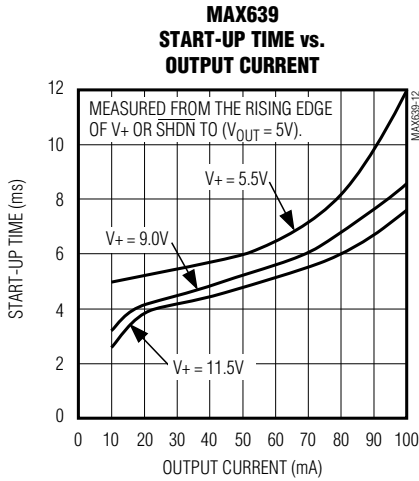
(Circuit of Figure 3, internal feedback,  $L = 100\mu\text{H}$ ,  $T_A = +25^\circ\text{C}$ , unless otherwise noted.)



# 5V/3.3V/3V/Adjustable, High-Efficiency, Low $I_Q$ , Step-Down DC-DC Converters

## Typical Operating Characteristics (continued)

(Circuit of Figure 3, internal feedback,  $L = 100\mu\text{H}$ ,  $T_A = +25^\circ\text{C}$ , unless otherwise noted.)

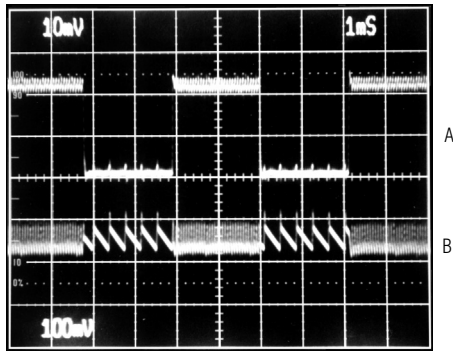


# 5V/3.3V/3V/Adjustable, High-Efficiency, Low $I_Q$ , Step-Down DC-DC Converters

## Typical Operating Characteristics (continued)

(Circuit of Figure 3, internal feedback,  $L = 100\mu\text{H}$ ,  $T_A = +25^\circ\text{C}$ , unless otherwise noted.)

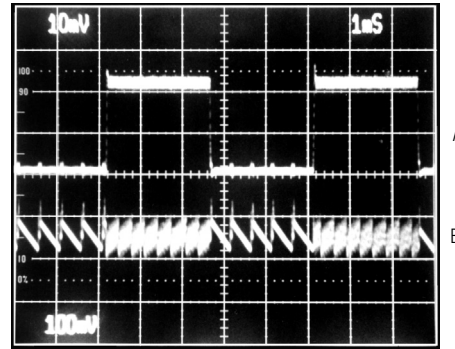
**MAX653**  
LOAD-TRANSIENT RESPONSE



1ms/div

A:  $I_{LOAD}$ , 0mA TO 100mA, 50mA/div  
B:  $V_{OUT}$ , 100mV/div, AC COUPLED  
 $V_{IN} = 5\text{V}$ ,  $V_{OUT} = 3\text{V}$

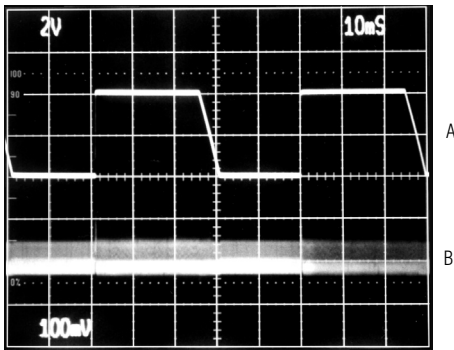
**MAX639**  
LOAD-TRANSIENT RESPONSE



1ms/div

A:  $I_{LOAD}$ , 0mA TO 200mA, 100mA/div  
B:  $V_{OUT}$ , 100mV/div, AC COUPLED  
 $V_{IN} = 9\text{V}$ ,  $V_{OUT} = 5\text{V}$

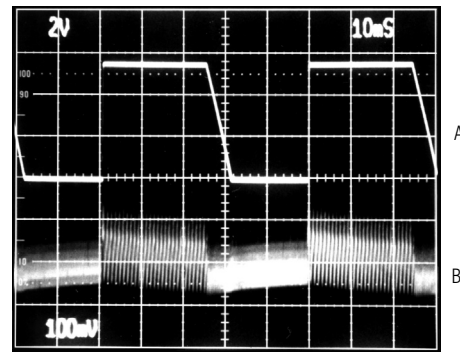
**MAX653**  
LINE-TRANSIENT RESPONSE



10ms/div

A:  $V_{IN}$ , 4V TO 8V, 2V/div  
B:  $V_{OUT}$ , 100mV/div  
 $V_{OUT} = 3\text{V}$ ,  $I_{LOAD} = 100\text{mA}$

**MAX639**  
LINE-TRANSIENT RESPONSE



10ms/div

A:  $V_{IN}$ , 6V TO 11.5V, 2V/div  
B:  $V_{OUT}$ , 100mV/div  
 $V_{OUT} = 5\text{V}$ ,  $I_{LOAD} = 100\text{mA}$

# 5V/3.3V/3V/Adjustable, High-Efficiency, Low $I_Q$ , Step-Down DC-DC Converters

## Pin Description

| PIN | NAME                     | FUNCTION   |
|-----|--------------------------|--|
| 1   | VOUT                     | Sense Input for regulated-output operation. Internally connected to an on-chip voltage divider and to the variable duty-cycle, on-demand oscillator. It must be connected to the external regulated output.                                    |
| 2   | LBO                      | Low-Battery Output. An open-drain N-channel MOSFET sinks current when the voltage at LBI drops below 1.28V.  |
| 3   | LBI                      | Low-Battery Input. When the voltage at LBI drops below 1.28V, LBO sinks current.   |
| 4   | GND                      | Ground   |
| 5   | LX                       | Drain of a PMOS power switch that has its source connected to V+. LX drives the external inductor, which provides current to the load.   |
| 6   | V+                       | Positive Supply-Voltage Input. Should not exceed 11.5V   |
| 7   | VFB                      | Dual-Mode Feedback Pin. When VFB is grounded, the internal voltage divider sets the output to 5V (MAX639), 3.3V (MAX640) or 3V (MAX653). For adjustable operation, connect VFB to an external voltage divider.                                 |
| 8   | $\overline{\text{SHDN}}$ | Shutdown Input — active low. When pulled below 0.8V, the LX power switch stays off, shutting down the regulator. When the shutdown input is above 2V, the regulator stays on. Tie $\overline{\text{SHDN}}$ to V+ if shutdown mode is not used. |

MAX639/MAX640/MAX653

## Getting Started

Designing power supplies with the MAX639/MAX640/MAX653 is easy. The few required external components are readily available. The most general applications use the following components:

- (1) Capacitors: For the input and output filter capacitors, try using electrolytics in the 100 $\mu$ F range, or use low-ESR capacitors to minimize output ripple. Capacitor values are not critical.
- (2) Diode: Use the popular 1N5817 or equivalent Schottky diode.
- (3) Inductor: For the highest output current, choose a 100 $\mu$ H inductor with an incremental saturation current rating of at least 600mA. To obtain the highest efficiencies and smallest size, refer to the *Inductor Selection* section.

## Detailed Description

Figure 1 shows a simplified, step-down DC-DC converter. When the switch is closed, a voltage equal to ( $V_+ - V_{OUT}$ ) is applied to the inductor. The current through the inductor ramps up, storing energy in the inductor's magnetic field. This same current also flows into the output filter capacitor and load. When the switch opens, the current continues to flow through the inductor in the same direction, but must also flow through the diode. The inductor alone supplies current to the load when the switch is open. This current decays to zero as the energy stored in the inductor's magnetic field is transferred to the output filter capacitor and the load.

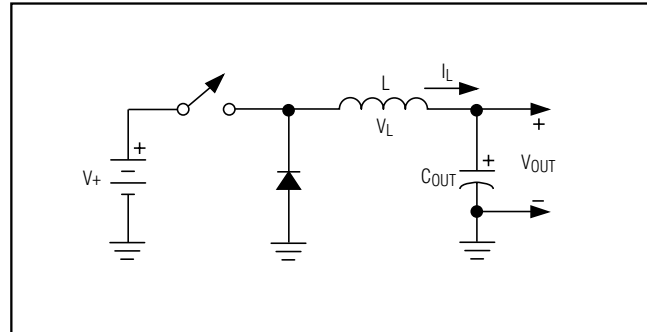


Figure 1. Simplified Step-Down Converter

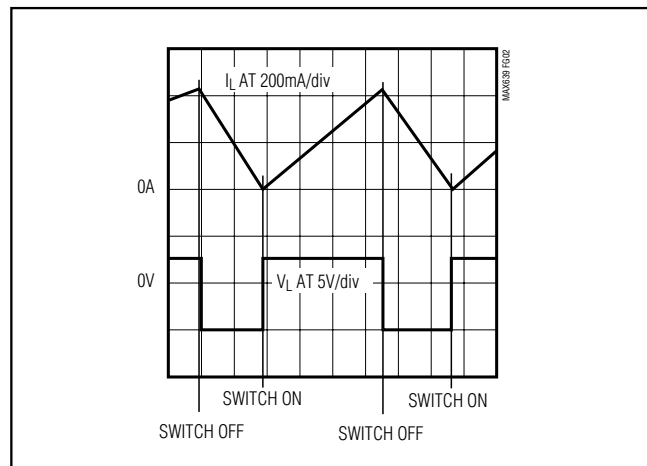


Figure 2. Simplified Step-Down Converter Operation

# 5V/3.3V/3V/Adjustable, High-Efficiency, Low I<sub>Q</sub>, Step-Down DC-DC Converters

Figure 2 shows what happens to the ideal circuit of Figure 1 if the switch turns on with a 66% duty cycle and  $V_+ = 3/2 V_{OUT}$ . The inductor current rises more slowly than it falls because the magnitude of the voltage applied during  $t_{ON}$  is less than that applied during  $t_{OFF}$ . Varying the duty cycle and switching frequency keeps the peak current constant as input voltage varies. The MAX639/MAX640/MAX653 control the switch ( $t_{ON}$  and  $t_{OFF}$ ) according to the following equations:

Equation (1)  $t_{ON} = 50\mu sV / (V_+ - V_{OUT})$

Equation (2)  $t_{OFF} \geq 50\mu sV / V_{OUT}$

Equation (3)  $I_{PEAK} = 50\mu sV / L$

These three equations ensure constant peak currents for a given inductor value, across all input voltages (ignoring the voltage drop across the diode (D1) and the resistive losses in the switch and inductor). The variable duty cycle also ensures that the current through the inductor discharges to zero at the end of each pulse.

Figure 3 shows the MAX639/MAX640/MAX653 block diagram and a typical connection in which 9V is converted to 5V (MAX639), 3.3V (MAX640), or 3.0V (MAX653). The sequence of events in this application is as follows:

When the output dips:

- (1) The error comparator switches high.
- (2) The internal oscillator starts (15 $\mu$ s start-up time) and connects to the gate of the LX output driver.
- (3) LX turns on and off according to  $t_{ON}$  and  $t_{OFF}$ , charging and discharging the inductor, and supplying current to the output (as described above).

When the output voltage recovers:

- (1) The comparator switches low.
- (2) LX turns off.
- (3) The oscillator shuts down to save power.

### Fixed or Adjustable Output

For operation at the preset output voltage, connect VFB to GND; no external resistors are required. For other output voltages, use an external voltage divider. Set the output voltage using R3 and R4 as determined by the following formula:

$$R3 = R4 [(V_{OUT} / V_{FB} \text{ Threshold}) - 1]$$

where R4 is any resistance in the 10k $\Omega$  to 1M $\Omega$  range (typically 100k $\Omega$ ), and the VFB threshold is typically 1.28V.

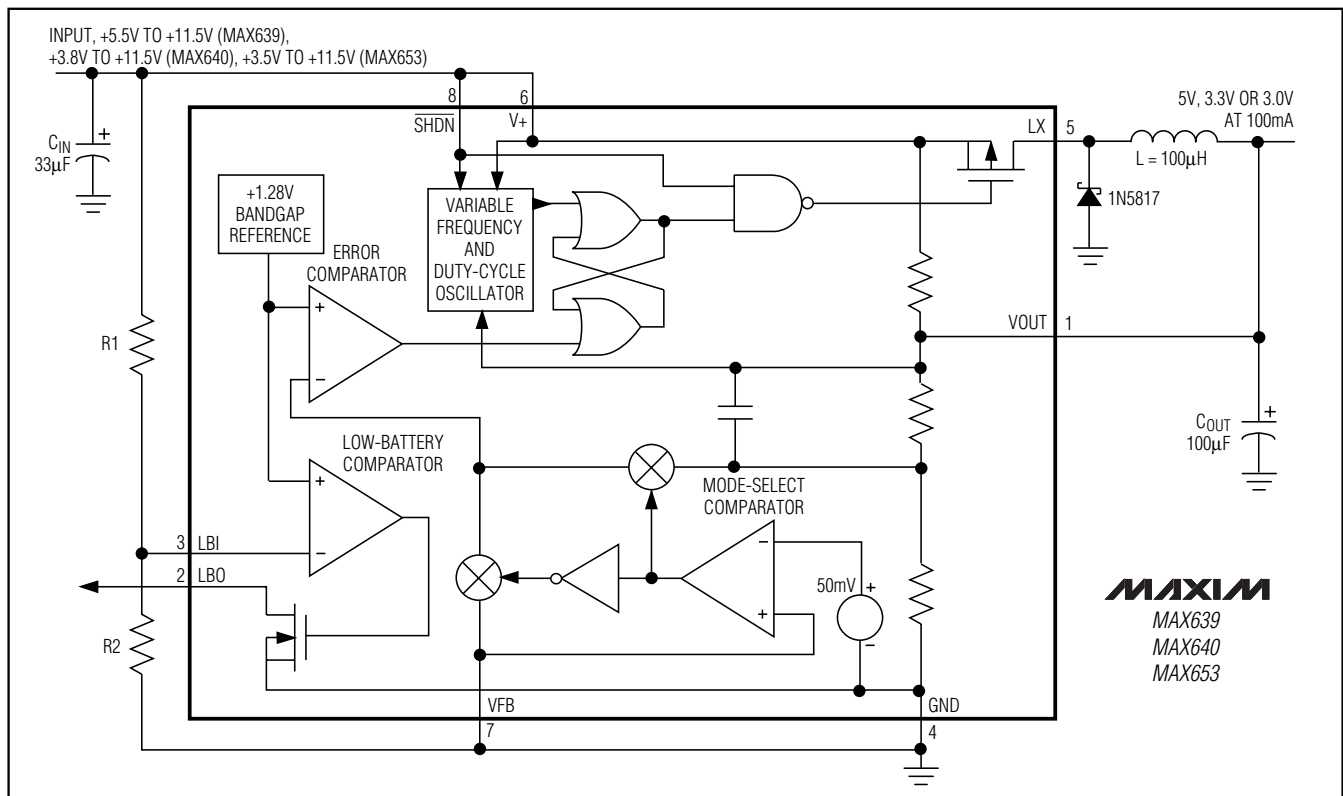


Figure 3. Block Diagram

# 5V/3.3V/3V/Adjustable, High-Efficiency, Low I<sub>Q</sub>, Step-Down DC-DC Converters

## Low-Battery Detector

The low-battery detector compares the voltage on the LBI input with the internal 1.28V reference. LBO goes low whenever the input voltage at LBI is less than 1.28V. Set the low-battery detection voltage with resistors R1 and R2 (Figure 3) as determined by the following formula:

$$R1 = R2 [(VLB / LBI \text{ Threshold}) - 1]$$

where R2 is any resistance in the 10kΩ to 1MΩ range (typically 100kΩ), the LBI threshold is typically 1.28V, and VLB is the desired low-battery detection voltage.

The low-battery comparator remains active in shutdown mode.

## Shutdown Mode

Bringing  $\overline{\text{SHDN}}$  below 0.8V places the MAX639/MAX640/MAX643 in shutdown mode. LX becomes high impedance, and the voltage at VOUT falls to zero. The time required for the output to rise to its nominal regulated voltage when brought out of shutdown (start-up time) depends on the inductor value, input voltage, and load current (see the Start-Up Time vs. Output Current graph in the *Typical Operating Characteristics*). The low-battery comparator remains active in shutdown mode.

## Applications Information

### Inductor Selection

When selecting an inductor, consider these four factors: peak-current rating, inductance value, series resistance, and size. It is important not to exceed the inductor's peak-current rating. A saturated inductor will pull excessive currents through the MAX639/MAX640/MAX653's switch, and may cause damage. Avoid using RF chokes or air-core inductors since they have very low peak-current ratings. Electromagnetic interference must not upset nearby circuitry or the regulator IC. Ferrite-bobbin types work well for most digital circuits; toroids or pot cores work well for EMI-sensitive analog circuits.

Recall that the inductance value determines I<sub>PEAK</sub> for all input voltages (Equation 3). If there are no resistive losses and the diode is ideal, the maximum average current that can be drawn from the MAX639/MAX640/MAX653 will be one-half I<sub>PEAK</sub>. With the real losses in the switch, inductor, and diode taken into account, the real maximum output current typically varies from 90% to 50% of the ideal. The following steps describe a conservative way to pick an appropriate inductor.

Step 1: Decide on the maximum required output current, in amperes: I<sub>OUTMAX</sub>.

Step 2: I<sub>PEAK</sub> = 4 × I<sub>OUTMAX</sub>.

Table 1. Component Suppliers

| INDUCTORS — THROUGH HOLE  |                   |                    |                      |                      |
|---|-------------------|--------------------|----------------------|----------------------|
| PART NUMBER   | SIZE (inches)     | VALUE (μH)         | I <sub>MAX</sub> (A) | SERIES R (Ω)         |
| MAXL001*  | 0.65 x 0.33 dia.  | 100                | 1.75                 | 0.2                  |
| 7300-13**   | 0.63 x 0.26 dia.  | 100                | 0.89                 | 0.27                 |
| 7300-15**   | 0.63 x 0.26 dia.  | 150                | 0.72                 | 0.36                 |
| 7300-17**   | 0.63 x 0.26 dia.  | 220                | 0.58                 | 0.45                 |
| 7300-19**   | 0.63 x 0.26 dia.  | 330                | 0.47                 | 0.58                 |
| 7300-21**   | 0.63 x 0.26 dia.  | 470                | 0.39                 | 0.86                 |
| 7300-25**   | 0.63 x 0.26 dia.  | 1000               | 0.27                 | 2.00                 |
| * Maxim Integrated Products<br>**Caddell-Burns<br>258 East Second Street<br>Mineola, NY 11501-3508<br>(516) 746-2310  |                   |                    |                      |                      |
| INDUCTORS — SURFACE MOUNT   |                   |                    |                      |                      |
| PART NUMBER   | SIZE (mm)         | VALUE (μH)         | I <sub>MAX</sub> (A) | SERIES R (Ω)         |
| CD54  | 5.2 x 5.8 x 4.5   | 100                | 0.52                 | 0.63                 |
| CD54  | 5.2 x 5.8 x 4.5   | 220                | 0.35                 | 1.50                 |
| CDR74   | 7.1 x 7.7 x 4.5   | 100                | 0.52                 | 0.51                 |
| CDR74   | 7.1 x 7.7 x 4.5   | 220                | 0.35                 | 0.98                 |
| CDR105  | 9.2 x 10.0 x 5.0  | 100                | 0.80                 | 0.35                 |
| CDR105  | 9.2 x 10.0 x 5.0  | 220                | 0.54                 | 0.69                 |
| Sumida Electric (USA)<br>637 East Golf Road<br>Arlington Heights, IL 60005<br>(708) 956-0666  |                   |                    |                      |                      |
| CAPACITORS — LOW ESR  |                   |                    |                      |                      |
| PART NUMBER   | SIZE (inches)     | VALUE (μF)         | ESR (Ω)              | V <sub>MAX</sub> (V) |
| MAXC001*  | 0.49 x 0.394 dia. | 150                | 0.2                  | 35                   |
| 267 Series**  | D SM packages     | 47                 | 0.2                  | 10                   |
| 267 Series**  | E SM packages     | 100                | 0.2                  | 6.3                  |
| * Maxim Integrated Products<br>**Matsuo Electronics<br>2134 Main Street<br>Huntington Beach, CA 92648<br>(714) 969-2491   |                   |                    |                      |                      |
| SCHOTTKY DIODES — SURFACE MOUNT   |                   |                    |                      |                      |
| PART NUMBER   | SIZE              | V <sub>F</sub> (V) | I <sub>MAX</sub> (A) |                      |
| SE014   | SOT89             | 0.55               | 1                    |                      |
| SE024   | SOT89             | 0.55               | 0.95                 |                      |
| Collmer Semiconductor<br>14368 Proton Road<br>Dallas, TX 75244<br>(214) 233-1589<br><b>NOTE:</b> This list does not constitute an endorsement by Maxim Integrated Products and is not intended to be a comprehensive list of all manufacturers of these components. |                   |                    |                      |                      |

MAX639/MAX640/MAX653

## 5V/3.3V/3V/Adjustable, High-Efficiency, Low $I_Q$ , Step-Down DC-DC Converters

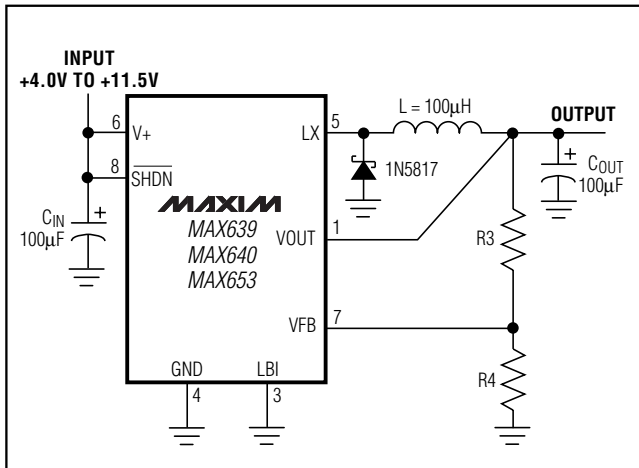


Figure 4. Adjustable-Output Operation

- Step 3:  $L = 50 / I_{PEAK}$ . L will be in  $\mu\text{H}$ . Do not use an inductor of less than 100 $\mu\text{H}$ .
- Step 4: Make sure that  $I_{PEAK}$  does not exceed 0.6A or the inductor's maximum current rating, whichever is lower.

Inductor series resistance affects both efficiency and dropout voltage. A high series resistance severely limits the maximum current available at lower input voltages. Output currents up to 225mA are possible if the inductor has low series resistance. Inductor and series switch resistance form an LR circuit during  $t_{ON}$ . If the L/R time constant is less than the oscillator  $t_{ON}$ , the inductor's peak current will fall short of the desired  $I_{PEAK}$ .

To maximize efficiency, choose the highest-value inductor that will provide the required output current over the whole range of your input voltage (see *Typical Operating Characteristics*). Inductors with peak currents in the 600mA range do not need to be very large. They are about the size of a 1W resistor, with surface-mount versions less than 5mm in diameter. Table 1 lists suppliers of inductors suitable for use with the MAX639/MAX640/MAX653.

### Output Filter Capacitor

The MAX639/MAX640/MAX653's output ripple has two components. One component results from the variation in stored charge on the filter capacitor with each LX pulse. The other is the product of the current into the capacitor and the capacitor's equivalent series resistance (ESR).

The amount of charge delivered in each oscillator pulse is determined by the inductor value and input voltage.

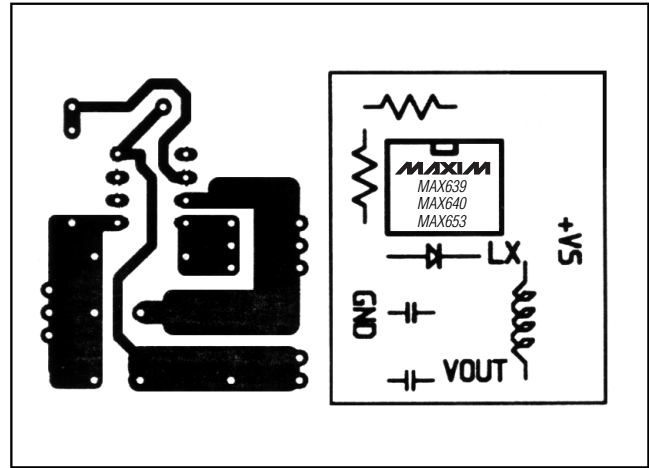


Figure 5. Through-Hole PC Layout and Component Placement Diagram for Standard Step-Down Application (Top-Side View)

It decreases with larger inductance, but increases as the input voltage lessens. As a general rule, a smaller amount of charge delivered in each pulse results in less output ripple.

With low-cost aluminum electrolytic capacitors, the ESR-induced ripple can be larger than that caused by the charge variation. Consequently, high-quality aluminum-electrolytic or tantalum filter capacitors will minimize output ripple. Best results at reasonable cost are typically achieved with an aluminum-electrolytic capacitor in the 100 $\mu\text{F}$  range, in parallel with a 0.1 $\mu\text{F}$  ceramic capacitor (Table 1).

### External Diode

In most MAX639/MAX640/MAX653 circuits, the current in the external diode (D1, Figure 3) changes abruptly from zero to its peak value each time LX switches off. To avoid excessive losses, the diode must have a fast turn-on time. For low-power circuits with peak currents less than 100mA, signal diodes such as the 1N4148 perform well. The 1N5817 diode works well for high-power circuits, or for maximum efficiency at low power. 1N5817 equivalent diodes are also available in surface-mount packages (Table 1). Although the 1N4001 and other general-purpose rectifiers are rated for high currents, they are unacceptable because their slow turn-off times result in excessive losses.

### Minimum Load

Under no-load conditions, because of leakage from the PMOS power switch (see the LX Leakage Current vs. Temperature graph in the *Typical Operating Characteristics*) and from the internal resistor from V+ to VOUT, leakage current may be supplied to the output

# 5V/3.3V/3V/Adjustable, High-Efficiency, Low $I_Q$ , Step-Down DC-DC Converters

MAX639/MAX640/MAX653

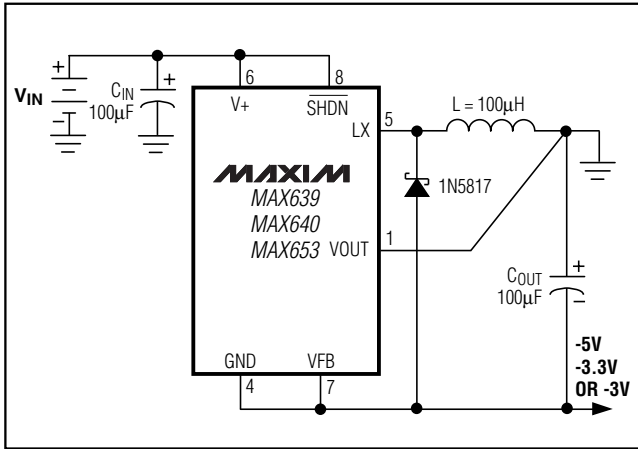


Figure 6. Inverting Configuration

capacitor, even when the switch is off. This will usually not be a problem for a 5V output at room temperature, since the diode's reverse leakage current and the feedback resistors' current typically drain the excess. However, if the diode leakage is very low (which can occur at low temperatures and/or small output voltages), charge may build up on the output capacitor, making  $V_{OUT}$  rise above its set point. If this happens, add a small load resistor (typically  $1M\Omega$ ) to the output to pull a few extra microamps of current from the output capacitor.

## Layout

Several of the external components in a MAX639/MAX640/MAX653 circuit experience peak currents up to 600mA. Wherever one of these components connects to ground, there is a potential for ground bounce. Ground bounce occurs when high currents flow through the parasitic resistances of PC board traces. What one component interprets as ground can differ from the IC's ground by several millivolts. This may increase the MAX639/MAX640/MAX653's output ripple, since the error comparator (which is referenced to ground) will generate extra switching pulses when they are not needed. It is essential that the input filter capacitor's ground lead, the MAX639/MAX640/MAX653's GND pin, the diode's anode, and the output filter capacitor's ground lead are as close together as possible, preferably at the same point. Figure 5 shows a suggested through-hole printed circuit layout that minimizes ground bounce.

## Inverter Configuration

Figure 6 shows the MAX639/MAX640/MAX653 in a floating ground configuration. By tying what would normally be the output to the supply-voltage ground, the IC's GND pin is forced to a regulated -5V (MAX639),

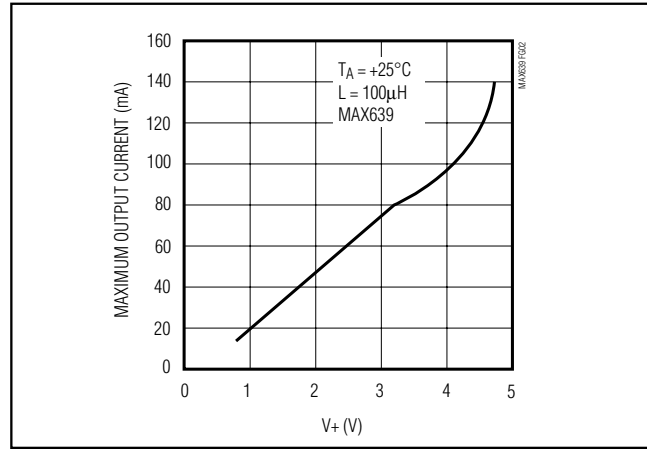


Figure 7. Maximum Current Capability of Figure 6 Circuit

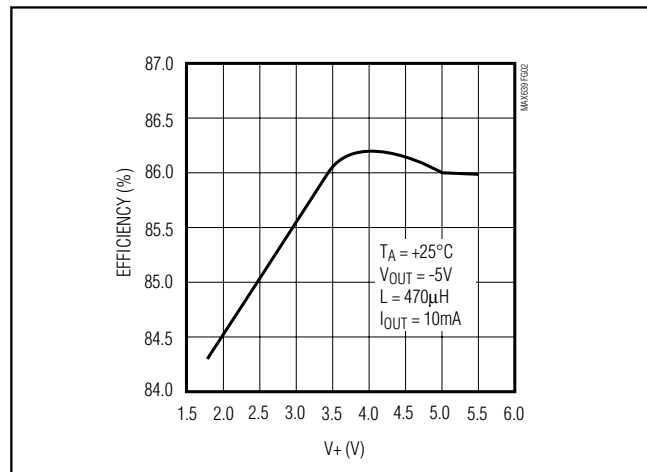


Figure 8. Efficiency of Figure 6 Circuit

-3.3V (MAX640), or -3V (MAX653). Avoid exceeding the maximum differential voltage of 11.5V from  $V_+$  to  $V_{OUT}$ . Other negative voltages can be generated by placing a voltage divider across  $C_{OUT}$  and connecting the tap point to VFB in the same manner as the normal step-down configuration.

## Two AA Batteries to 5V, 3.3V, or 3V

For battery-powered applications, where the signal ground does not have to correspond to the power-supply ground, the circuit in Figure 6 generates 5V (MAX639), 3.3V (MAX640), or 3V (MAX653) from a pair of AA batteries. Connect the  $V_{IN}$  ground point to your system's input, and connect the output to your system's ground input. This configuration has the added advantage of reduced on-resistance, since the IC's internal power FET has  $V_{IN} + V_{OUT}$  of gate drive (Figures 7 and 8).

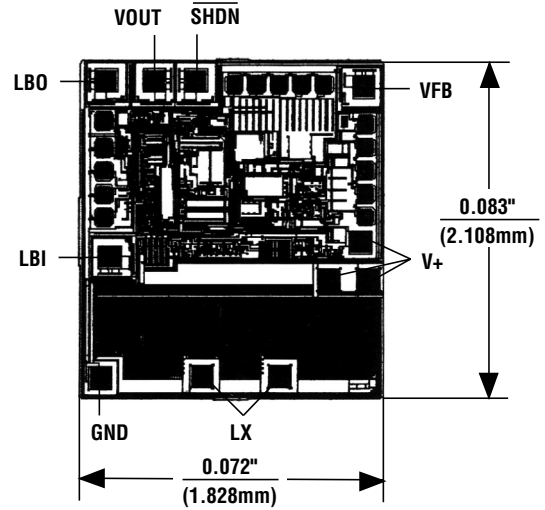
# 5V/3.3V/3V/Adjustable, High-Efficiency, Low I<sub>Q</sub>, Step-Down DC-DC Converters

## Ordering Information (continued)

| PART      | TEMP RANGE      | PIN-PACKAGE   |
|-----------|-----------------|---------------|
| MAX640CPA | 0°C to +70°C    | 8 Plastic DIP |
| MAX640CSA | 0°C to +70°C    | 8 SO          |
| MAX640C/D | 0°C to +70°C    | Dice*         |
| MAX640EPA | -40°C to +85°C  | 8 Plastic DIP |
| MAX640ESA | -40°C to +85°C  | 8 SO          |
| MAX640MJA | -55°C to +125°C | 8 CERDIP      |
| MAX653CPA | 0°C to +70°C    | 8 Plastic DIP |
| MAX653CSA | 0°C to +70°C    | 8 SO          |
| MAX653C/D | 0°C to +70°C    | Dice*         |
| MAX653EPA | -40°C to +85°C  | 8 Plastic DIP |
| MAX653ESA | -40°C to +85°C  | 8 SO          |
| MAX653MJA | -55°C to +125°C | 8 CERDIP      |

\*Contact factory for dice specifications.

## Chip Topography



TRANSISTOR COUNT: 221  
SUBSTRATE CONNECTED TO V+

# 5V/3.3V/3V/Adjustable, High-Efficiency, Low I<sub>Q</sub>, Step-Down DC-DC Converters

## Package Information

(The package drawing(s) in this data sheet may not reflect the most current specifications. For the latest package outline information go to [www.maxim-ic.com/packages](http://www.maxim-ic.com/packages).)

TOP VIEW

FRONT VIEW

SIDE VIEW

| DIM | INCHES    |       | MILLIMETERS |      |
|-----|-----------|-------|-------------|------|
|     | MIN       | MAX   | MIN         | MAX  |
| A   | 0.053     | 0.069 | 1.35        | 1.75 |
| A1  | 0.004     | 0.010 | 0.10        | 0.25 |
| B   | 0.014     | 0.019 | 0.35        | 0.49 |
| C   | 0.007     | 0.010 | 0.19        | 0.25 |
| e   | 0.050 BSC |       | 1.27 BSC    |      |
| E   | 0.150     | 0.157 | 3.80        | 4.00 |
| H   | 0.228     | 0.244 | 5.80        | 6.20 |
| L   | 0.016     | 0.050 | 0.40        | 1.27 |

VARIATIONS:

| DIM | INCHES |       | MILLIMETERS |       | N  | MS012 |
|-----|--------|-------|-------------|-------|----|-------|
|     | MIN    | MAX   | MIN         | MAX   |    |       |
| D   | 0.189  | 0.197 | 4.80        | 5.00  | 8  | AA    |
| D   | 0.337  | 0.344 | 8.55        | 8.75  | 14 | AB    |
| D   | 0.386  | 0.394 | 9.80        | 10.00 | 16 | AC    |

SOICN | EPS

**NOTES:**

1. D&E DO NOT INCLUDE MOLD FLASH.
2. MOLD FLASH OR PROTRUSIONS NOT TO EXCEED 0.15mm (.006").
3. LEADS TO BE COPLANAR WITHIN 0.10mm (.004").
4. CONTROLLING DIMENSION: MILLIMETERS.
5. MEETS JEDEC MS012.
6. N = NUMBER OF PINS.

**DALLAS SEMICONDUCTOR** **MAXIM**

PROPRIETARY INFORMATION

TITLE:  
PACKAGE OUTLINE, .150" SOIC

|          |                                 |        |     |
|----------|---------------------------------|--------|-----|
| APPROVAL | DOCUMENT CONTROL NO.<br>21-0041 | REV. B | 1/1 |
|----------|---------------------------------|--------|-----|

Maxim cannot assume responsibility for use of any circuitry other than circuitry entirely embodied in a Maxim product. No circuit patent licenses are implied. Maxim reserves the right to change the circuitry and specifications without notice at any time.

## Looking for pricing, stock, or lifecycle information?

Click below to explore more details on WIN SOURCE:

- ⊖ [View MAX639EPA+](#) on WIN SOURCE
- ⊖ [Maxim Integrated](#) Information

## Optimize Your Supply Chain with WIN SOURCE Solutions

- ✓ Global Sourcing Solution
- ✓ Obsolete Management
- ✓ Cost Control Management
- ✓ Shortage Management
- ✓ Alternative Solution
- ✓ Excess Inventory Management