





## MIC2601/2

### 1.2A, 1.2MHz/2MHz Wide Input Range Integrated Switch Boost Regulator

#### General Description

The MIC2601/2 is a 1.2MHz/2MHz, PWM DC/DC boost switching regulator available in a 2mm x 2mm MLF<sup>®</sup> package. High power density is achieved with the MIC2601/2's internal 40V/1.2A switch, allowing it to power large loads in a tiny footprint.

The MIC2601/2 implements constant frequency 1.2MHz/2MHz PWM current mode control. The MIC2601/2 offers internal compensation that provides excellent transient response and output regulation performance. The high frequency operation saves board space by allowing small, low-profile external components. The fixed frequency PWM scheme also reduces spurious switching noise and ripple to the input power source.

Soft start reduces inrush current and is programmable via external capacitor.

The MIC2601/2 is available in a 2mm x 2mm 8-pin MLF<sup>®</sup> leadless package. Both devices have an output over-voltage protection feature.

The MIC2601/2 has an operating junction temperature range of -40°C to +125°C.

Data sheets and support documentation can be found on Micrel's web site at: [www.micrel.com](http://www.micrel.com).

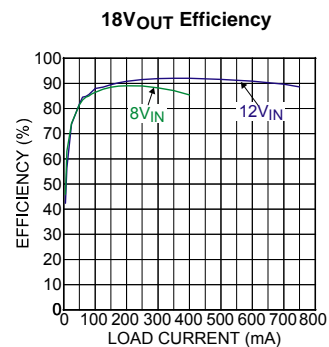
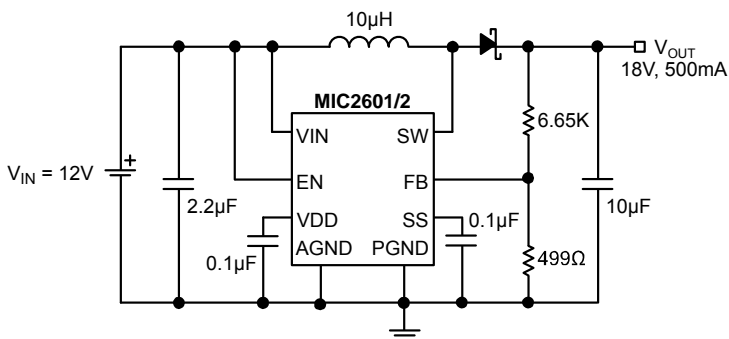
#### Features

- Wide input voltage range: 4.5V to 20V
- Output voltage adjustable to 40V
- 1.2A switch current
- MIC2601 operates at 1.2MHz
- MIC2602 operates at 2MHz
- Stable with small size ceramic capacitors
- High efficiency
- Programmable soft start
- <10µA shutdown current
- UVLO
- Output over-voltage protection
- Over temperature shutdown
- 8-pin 2mm x 2mm MLF<sup>®</sup> package
- -40°C to +125°C junction temperature range

#### Applications

- Multimedia STB/Antenna
- Broadband communications
- TFT-LCD bias supplies
- Bias supply
- Positive output regulators
- SEPIC converters
- DSL applications
- Local boost regulators

#### Typical Application



MLF and MicroLeadFrame are registered trademarks of Amkor Technology, Inc.

Micrel Inc. • 2180 Fortune Drive • San Jose, CA 95131 • USA • tel +1 (408) 944-0800 • fax + 1 (408) 474-1000 • <http://www.micrel.com>

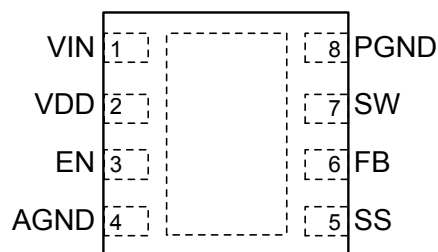
## Ordering Information

| Part Number | Marking Code <sup>(1)</sup> | Frequency | Output Over Voltage Protection | Temperature Range | Package <sup>(2)</sup>           | Lead Finish |
|-------------|-----------------------------|-----------|--------------------------------|-------------------|----------------------------------|-------------|
| MIC2601YML  | RD1                         | 1.2MHz    | 40V                            | -40° to +125°C    | 8-Pin 2mm x 2mm MLF <sup>®</sup> | Pb-Free     |
| MIC2602YML  | RE1                         | 2MHz      | 40V                            | -40° to +125°C    | 8-Pin 2mm x 2mm MLF <sup>®</sup> | Pb-Free     |

### Notes

- Overbar (—) symbol may not be to scale.
- MLF<sup>®</sup> is a GREEN RoHS compliant package. Lead finish is NiPdAu. Mold compound is Halogen Free.

## Pin Configuration



## Pin Description

| Pin Number | Pin Name | Pin Function   |
|------------|----------|--|
| 1          | VIN      | Supply (Input): 4.5V to 20V input voltage.                                       |
| 2          | VDD      | Internal regulator. VDD should be connected to VIN when VIN ≤ 7V.                |
| 3          | EN       | Enable (Input): Logic high enables regulator. Logic low shuts down regulator.    |
| 4          | AGND     | Analog Ground  |
| 5          | SS       | Soft Start   |
| 6          | FB       | Feedback (Input): 1.25V output voltage sense node. $V_{OUT} = 1.25V (1 + R1/R2)$ |
| 7          | SW       | Switch Node (Input): Internal power BIPOLAR collector.                           |
| 8          | PGND     | Power ground   |
| EP         | GND      | Ground (Return): Exposed backside pad. Internally fused to AGND and PGND pins.   |

**Absolute Maximum Ratings<sup>(1)</sup>**

|  |                   |
|--|-------------------|
| Supply Voltage ( $V_{IN}$ ).....           | 22V               |
| Switch Voltage ( $V_{SW}$ ).....           | -0.3V to 40V      |
| Enable Voltage ( $V_{EN}$ ).....           | -0.3V to $V_{IN}$ |
| FB Voltage ( $V_{FB}$ ).....               | 6V                |
| Ambient Storage Temperature ( $T_s$ )..... | -65°C to +150°C   |
| Lead Temperature (soldering 10sec).....    | 260°C             |
| ESD Rating.....                            | 2kV               |

**Operating Ratings<sup>(2)</sup>**

|  |                 |
|--|-----------------|
| Supply Voltage ( $V_{IN}$ ).....       | 4.5V to 20V     |
| Enable Voltage ( $V_{EN}$ ).....       | 0V to 20V       |
| Junction Temperature ( $T_J$ ).....    | -40°C to +125°C |
| Junction Thermal Resistance            |                 |
| 2mm x 2mm MLF-8 ( $\theta_{JA}$ )..... | 90°C/W          |
| 2mm x 2mm MLF-8 ( $\theta_{JC}$ )..... | 45°C/W          |

**Electrical Characteristics<sup>(3)</sup>**

$T_A = 25^\circ\text{C}$ ,  $V_{IN} = V_{EN} = 12\text{V}$ ; unless otherwise noted. **Bold** values indicate  $-40^\circ\text{C} \leq T_J \leq +125^\circ\text{C}$ .

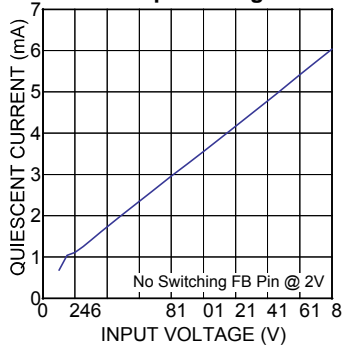
| Symbol     | Parameter                           | Condition  | Min          | Typ  | Max          | Units            |
|------------|-------------------------------------|--|--------------|------|--------------|------------------|
| $V_{IN}$   | Input Voltage Range                 |  | 4.5          |      | 20           | V                |
| $V_{DD}$   | Internal Regulated Voltage          | <b>Note 4</b>  |              | 6.0  |              | V                |
| $V_{ULVO}$ | Under-voltage Lockout               | For $V_{DD}$   | 1.8          | 2.1  | 2.4          | V                |
| $I_Q$      | Quiescent Current                   | $V_{FB} = 2\text{V}$ (not switching)   |              | 4.2  | 6            | mA               |
| $I_{SD}$   | Shutdown Current                    | $V_{EN} = 0\text{V}$ , <b>Note 5</b>   |              | 0.08 | 2            | $\mu\text{A}$    |
| $V_{FB}$   | Feedback Voltage                    | ( $\pm 2\%$ )  | 1.235        | 1.26 | 1.285        | V                |
|            |                                     | ( $\pm 3\%$ ) (over temperature)   | <b>1.222</b> |      | <b>1.298</b> | V                |
| $I_{FB}$   | Feedback Input Current              | $V_{FB} = 1.25\text{V}$  |              | -550 |              | nA               |
|            | Line Regulation                     | $8\text{V} \leq V_{IN} \leq 14\text{V}$ , $V_{OUT} = 18\text{V}$                     |              | 0.04 | 1            | %                |
|            | Load Regulation                     | $5\text{mA} \leq I_{OUT} \leq 400\text{mA}$ , $V_{OUT} = 18\text{V}$ , <b>Note 6</b> |              | 0.1  |              | %                |
| $SS_R$     | Internal Soft Start Resistor        |  |              | 15   |              | k $\Omega$       |
| $D_{MAX}$  | Maximum Duty Cycle                  | MIC2601  | 85           |      |              | %                |
|            |                                     | MIC2602  | 80           |      |              | %                |
| $I_{SW}$   | Switch Current Limit                | <b>Note 6</b>  | 1.2          | 1.7  |              | A                |
| $V_{SW}$   | Switch Saturation Voltage           | $I_{SW} = 1.2\text{A}$   |              | 500  |              | mV               |
| $I_{SW}$   | Switch Leakage Current              | $V_{EN} = 0\text{V}$ , $V_{SW} = 18\text{V}$   |              | 0.01 | 5            | $\mu\text{A}$    |
| $V_{EN}$   | Enable Threshold                    | Turn ON  | 1.5          |      |              | V                |
|            |                                     | Turn OFF   |              |      | 0.3          | V                |
| $I_{EN}$   | Enable Pin Current                  | $V_{EN} = 12\text{V}$  |              | 18.5 | 40           | $\mu\text{A}$    |
| $f_{SW}$   | Oscillator Frequency (MIC2601)      |  | <b>1.02</b>  | 1.12 | <b>1.38</b>  | MHz              |
|            | Oscillator Frequency (MIC2602)      |  | <b>1.7</b>   | 1.92 | <b>2.3</b>   | MHz              |
| $V_{OVP}$  | Output Over-voltage Protection      | 15% Over programmed $V_{OUT}$ (rising)   | 10           | 15   | 20           | %                |
| $T_J$      | Over-temperature Threshold Shutdown |  |              | 150  |              | $^\circ\text{C}$ |
|            |                                     | Hysteresis   |              | 10   |              | $^\circ\text{C}$ |

**Notes:**

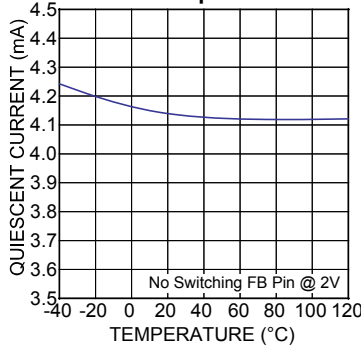
1. Absolute maximum ratings indicate limits beyond which damage to the component may occur. Electrical specifications do not apply when operating the device outside of its operating ratings. The maximum allowable power dissipation is a function of the maximum junction temperature,  $T_{J(\text{Max})}$ , the junction-to-ambient thermal resistance,  $\theta_{JA}$ , and the ambient temperature,  $T_A$ . The maximum allowable power dissipation will result in excessive die temperature, and the regulator will go into thermal shutdown.
2. The device is not guaranteed to function outside its operating rating.
3. Specification for packaged product only.
4. Connect  $V_{DD}$  pin to  $V_{IN}$  pin when  $V_{IN} \leq 7\text{V}$ .
5.  $I_{SD} = I_{VIN}$ .
6. Guaranteed by design.

# Typical Characteristics

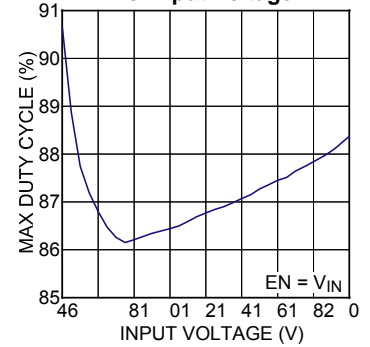
**Quiescent Current vs. Input Voltage**



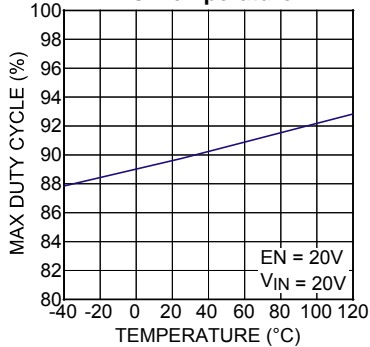
**Quiescent Current vs. Temperature**



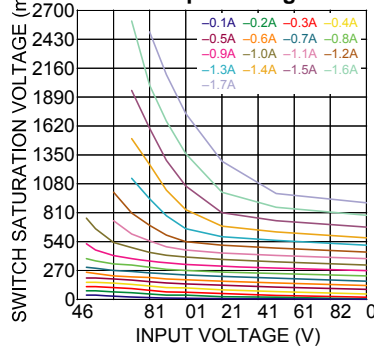
**Max Duty Cycle vs. Input Voltage**



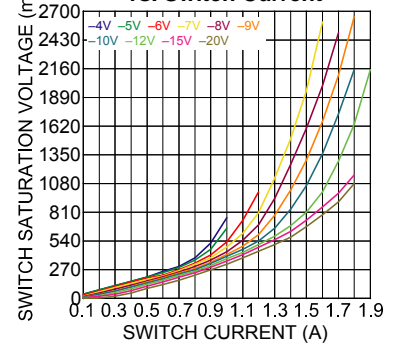
**Max Duty Cycle vs. Temperature**



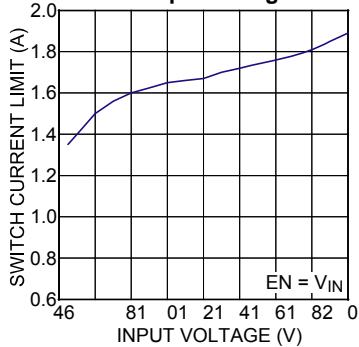
**Switch Saturation Voltage vs. Input Voltage**



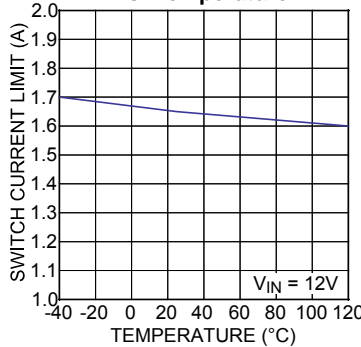
**Switch Saturation Voltage vs. Switch Current**



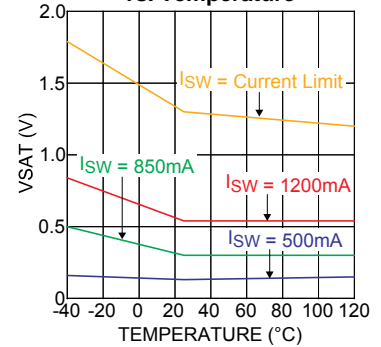
**Switch Current Limit vs. Input Voltage**



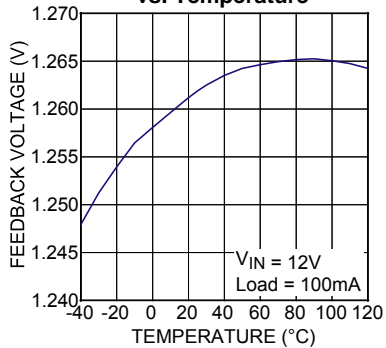
**Switch Current Limit vs. Temperature**



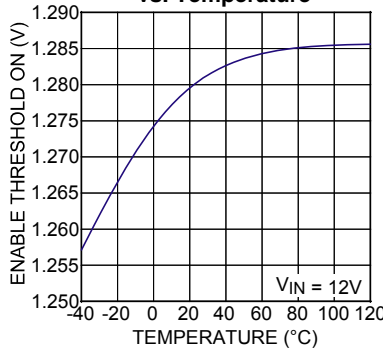
**VSAT vs. Temperature**



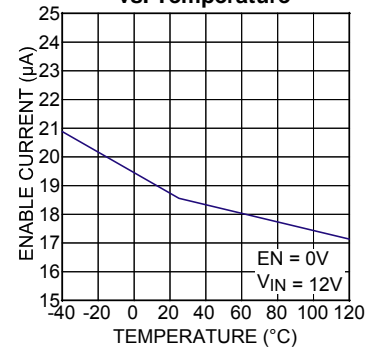
**Feedback Voltage vs. Temperature**



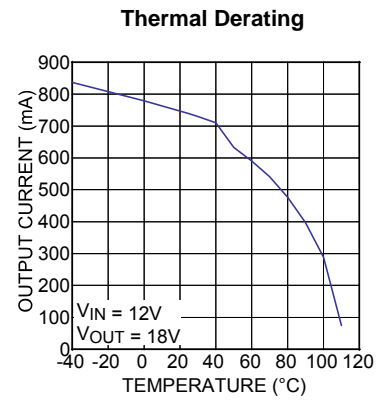
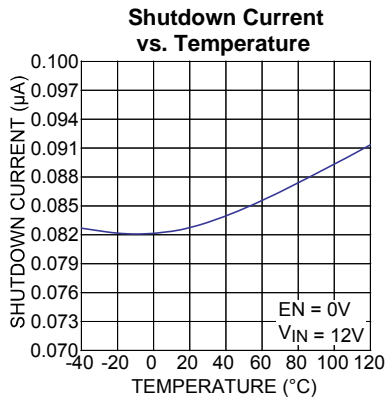
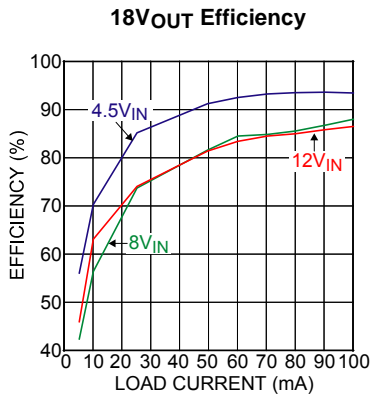
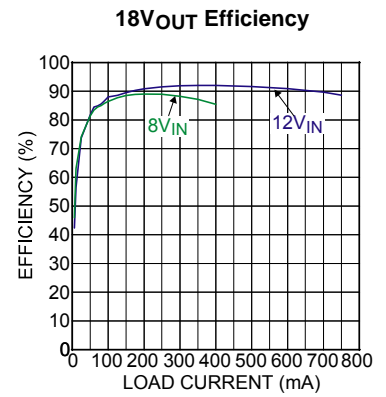
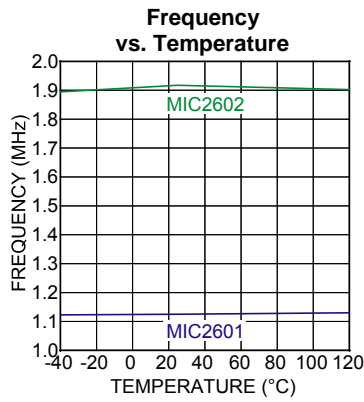
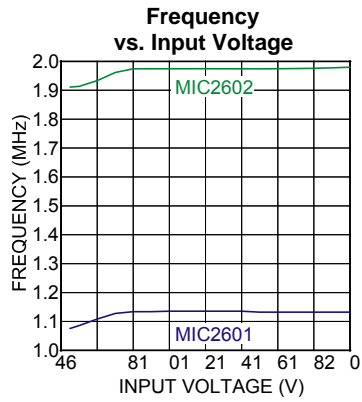
**Enable Threshold ON vs. Temperature**



**Enable Current vs. Temperature**

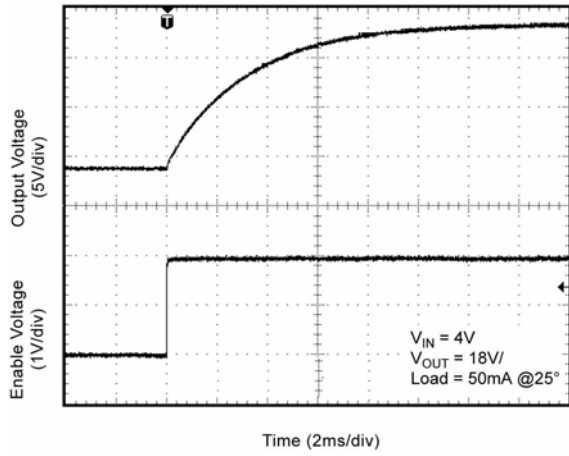


# Typical Characteristics

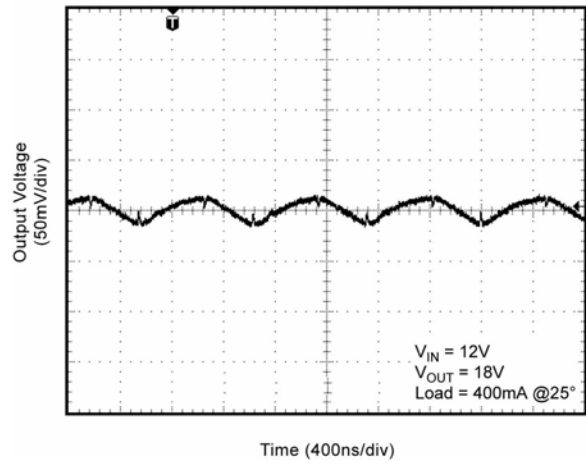


## Functional Characteristics

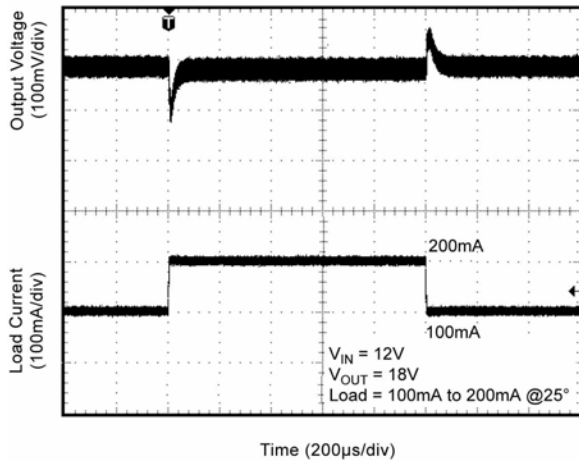
**Enable Turn-On**



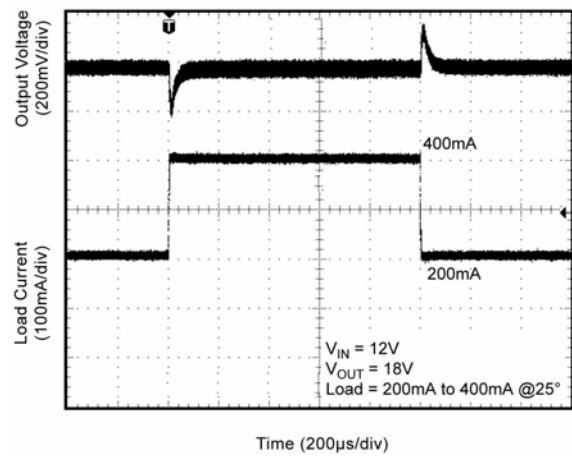
**Ripple Waveform**



**Load Transient**



**Load Transient**



### Functional Diagram

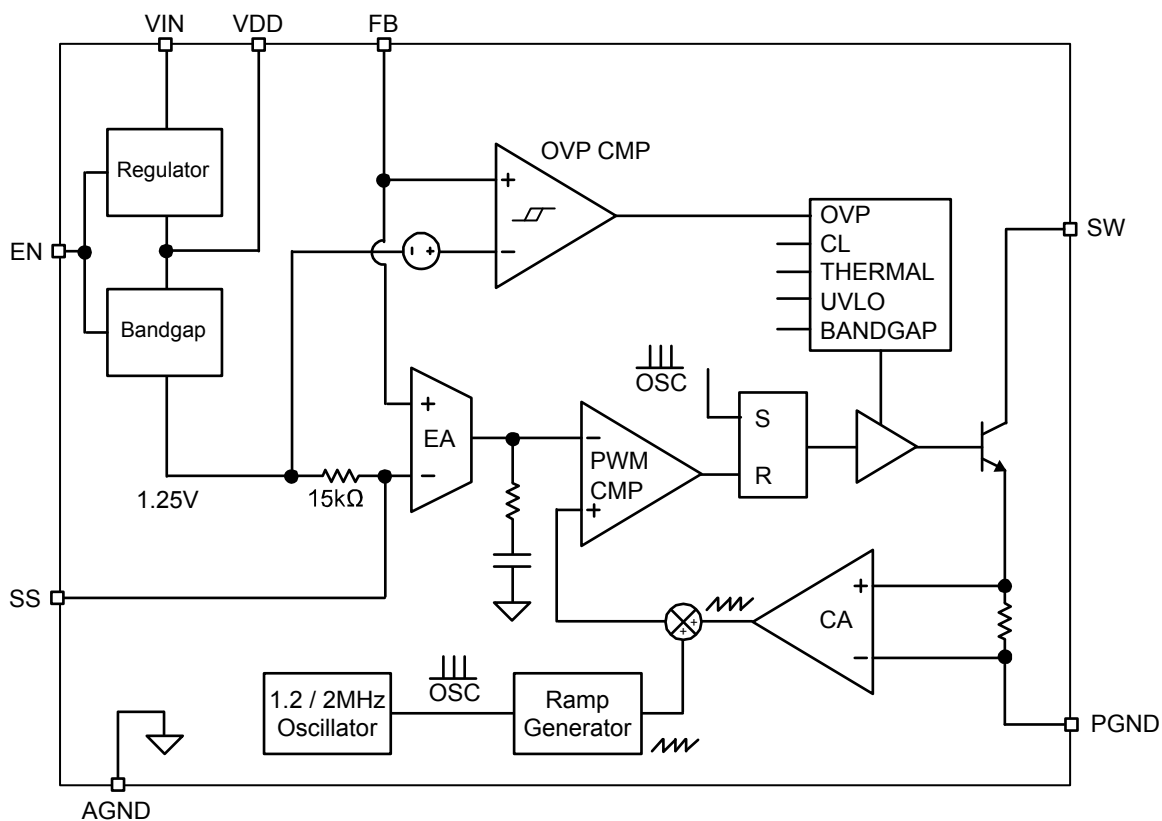


Figure 1. MIC2601/2 Block Diagram

## Functional Description

The MIC2601/2 is a constant frequency, PWM current mode boost regulator. The block diagram is shown in Figure 1. The MIC2601/2 is composed of an oscillator, slope compensation ramp generator, current amplifier,  $g_m$  error amplifier, PWM generator, and a 1.2A bipolar output transistor. The oscillator generates a 1.2MHz/2MHz clock. The clock's two functions are to trigger the PWM generator that turns on the output transistor and to reset the slope compensation ramp generator. The current amplifier is used to measure the switch current by amplifying the voltage signal from the internal sense resistor. The output of the current amplifier is summed with the output of the slope compensation ramp generator. This summed current-loop signal is fed to one of the inputs of the PWM generator.

The  $g_m$  error amplifier measures the feedback voltage through the external feedback resistors and amplifies the error between the detected signal and the 1.25V reference voltage. The output of the  $g_m$  error amplifier provides the voltage-loop signal that is fed to the other input of the PWM generator. When the current-loop signal exceeds the voltage-loop signal, the PWM generator turns off the bipolar output transistor. The next clock period initiates the next switching cycle, maintaining the constant frequency current-mode PWM control.

## Pin Description

### VIN

VIN provides power to the MOSFETs for the switch mode regulator section. Due to the high switching speeds, a 2.2 $\mu$ F capacitor is recommended close to VIN and the power ground (PGND) pin for bypassing. Please refer to layout recommendations.

### VDD

The VDD pin supplies the power to the internal power to the control and reference circuitry. The VDD is powered from VIN. A small 0.1 $\mu$ F capacitor is recommended for bypassing.

### EN

The enable pin provides a logic level control of the output. In the off state, supply current of the device is greatly reduced (typically <0.1 $\mu$ A). Also, in the off state, the output drive is placed in a "tri-stated" condition, where bipolar output transistor is in an "off" or non-conducting state. Do not drive the enable pin above the supply voltage.

### SS

The SS pin is the soft start pin which allows the monotonic buildup of output when the MIC2601/2 comes up during turn on. The SS pin gives the designer the flexibility to have a desired soft start by placing a capacitor SS to ground. A 0.1 $\mu$ F capacitor is used for in the circuit.

### FB

The feedback pin (FB) provides the control path to control the output. For fixed output controller output is directly connected to feedback (FB) pin.

### SW

The switch (SW) pin connects directly to the inductor and provides the switching current necessary to operate in PWM mode. Due to the high speed switching and high voltage associated with this pin, the switch node should be routed away from sensitive nodes.

### PGND

Power ground (PGND) is the ground path for the high current PWM mode. The current loop for the power ground should be as small as possible and separate from the Analog ground (AGND) loop. Refer to the layout considerations for more details.

### AGND

Analog ground (AGND) is the ground path for the biasing and control circuitry. The current loop for the signal ground should be separate from the Power ground (PGND) loop. Refer to the layout considerations for more details.

## Application Information

### DC-to-DC PWM Boost Conversion

The MIC2601/2 is a constant frequency boost converter. It operates by taking a DC input voltage and regulating a higher DC output voltage. Figure 2 shows a typical circuit. Boost regulation is achieved by turning on an internal switch, which draws current through the inductor (L1). When the switch turns off, the inductor's magnetic field collapses, causing the current to be discharged into the output capacitor through an external Schottky diode (D1). Voltage regulation is achieved through pulse-width modulation (PWM).

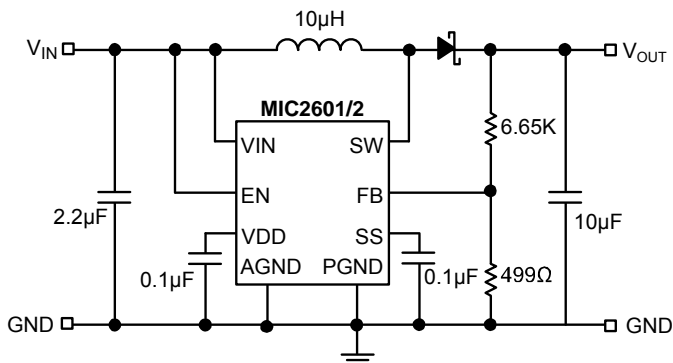


Figure 2. Typical Application Circuit

### Duty Cycle Considerations

Duty cycle refers to the switch on-to-off time ratio and can be calculated as follows for a boost regulator:

$$D = 1 - \frac{V_{IN}}{V_{OUT}}$$

The duty cycle required for voltage conversion should be less than the maximum duty cycle of 85%. Also, in light load conditions, where the input voltage is close to the output voltage, the minimum duty cycle can cause pulse skipping. This is due to the energy stored in the inductor causing the output to overshoot slightly over the regulated output voltage. During the next cycle, the error amplifier detects the output as being high and skips the following pulse. This effect can be reduced by increasing the minimum load or by increasing the inductor value. Increasing the inductor value reduces peak current, which in turn reduces energy transfer in each cycle.

### Overvoltage Protection

For the MIC2601/2 there is an over voltage protection function. If the output voltage overshoots the set voltage by 15% when feedback is high during input higher than output, turn on, load transients, line transients, load disconnection etc. the MIC2601/2 OVP ckt will shut the switch off saving itself and other sensitive circuitry downstream.

## Component Selection

### Inductor

Inductor selection is a balance between efficiency, stability, cost, size, and rated current. For most applications, a 10µH is the recommended inductor value; it is usually a good balance between these considerations. Large inductance values reduce the peak-to-peak ripple current, affecting efficiency. This has an effect of reducing both the DC losses and the transition losses. There is also a secondary effect of an inductor's DC resistance (DCR). The DCR of an inductor will be higher for more inductance in the same package size. This is due to the longer windings required for an increase in inductance. Since the majority of input current (minus the MIC2601 operating current) is passed through the inductor, higher DCR inductors will reduce efficiency. To maintain stability, increasing inductor size will have to be met with an increase in output capacitance. This is due to the unavoidable "right half plane zero" effect for the continuous current boost converter topology. The frequency at which the right half plane zero occurs can be calculated as follows:

$$FRHPZ = \frac{(D)^2 \cdot V_o}{2 \cdot \pi \cdot L \cdot I_o}$$

The right half plane zero has the undesirable effect of increasing gain, while decreasing phase. This requires that the loop gain is rolled off before this has significant effect on the total loop response. This can be accomplished by either reducing inductance (increasing RHPZ frequency) or increasing the output capacitor value (decreasing loop gain).

### Output Capacitor

Output capacitor selection is also a trade-off between performance, size, and cost. Increasing output capacitance will lead to an improved transient response, but also an increase in size and cost. X5R or X7R dielectric ceramic capacitors are recommended for designs with the MIC2601/2. Y5V values may be used, but to offset their tolerance over temperature, more capacitance is required.

### Diode Selection

The MIC2601/2 requires an external diode for operation. A Schottky diode is recommended for most applications due to their lower forward voltage drop and reverse recovery time. Ensure the diode selected can deliver the peak inductor current and the maximum reverse voltage is rated greater than the output voltage.

### Input capacitor

A minimum 2.2µF ceramic capacitor is recommended for designing with the MIC2601/2. Increasing input capacitance will improve performance and greater noise

immunity on the source. The input capacitor should be as close as possible to the inductor and the MIC2601, with short traces for good noise performance.

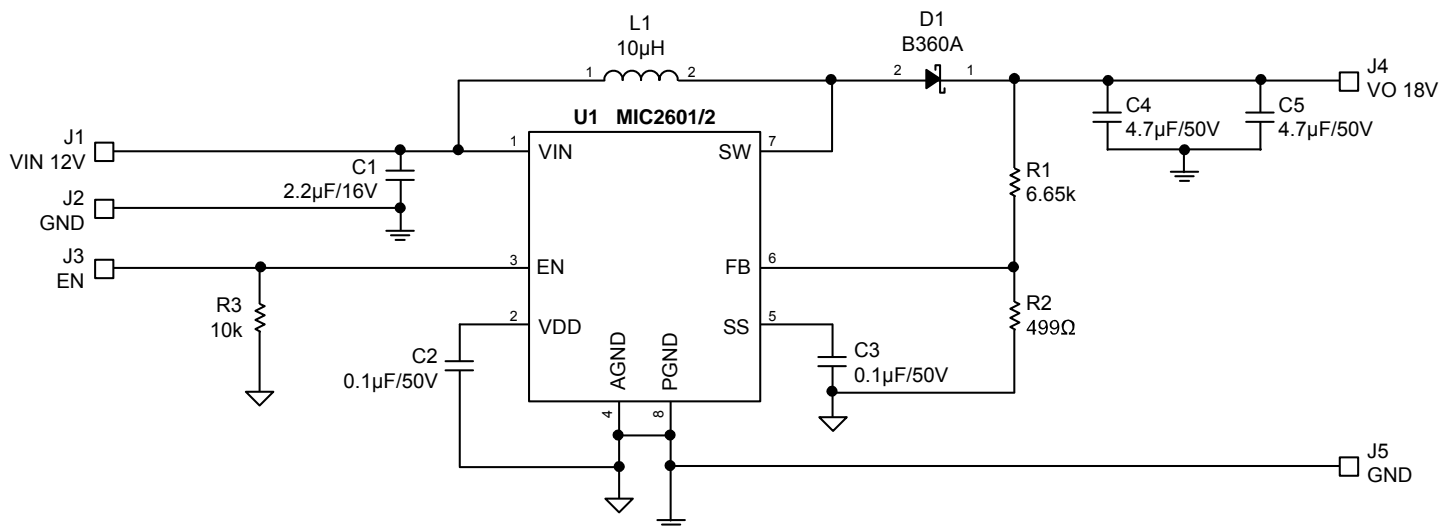
#### Feedback Resistors

The MIC2601/2 utilizes a feedback pin to compare the output to an internal reference. The output voltage is adjusted by selecting the appropriate feedback resistor network values. The R2 resistor value must be less than

or equal to 1k $\Omega$  ( $R2 \leq 1k\Omega$ ). The desired output voltage can be calculated as follows:

$$V_{OUT} = V_{REF} \cdot \left( \frac{R1}{R2} + 1 \right)$$

where  $V_{REF}$  is equal to 1.25V.



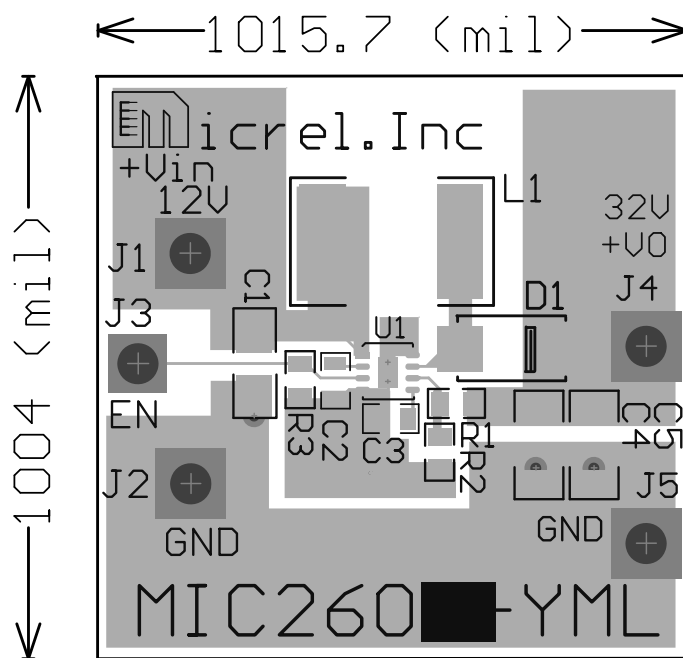
### Bill of Materials

| Item   | Part Number        | Manufacturer                | Description   | Qty. |
|--------|--------------------|-----------------------------|---|------|
| C1     | GRM21BR71C225KA12L | Murata <sup>(1)</sup>       | Capacitor, 2.2µF, 16V, X7R, Size 0805                     | 1    |
|        | 0805YC225MAT       | AVX <sup>(2)</sup>          |   |      |
| C2, C3 | VJ0603Y104KXAAT    | Vishay <sup>(3)</sup>       | Capacitor, 0.1µF, 50V, X7R, Size 0603                     | 2    |
|        | 06035C104MAT       | AVX <sup>(2)</sup>          |   |      |
|        | GRM188R71C104KA01D | Murata <sup>(1)</sup>       |   |      |
| C4, C5 | GRM31CR71H475KA12L | Murata <sup>(1)</sup>       | Capacitor, 4.71µF, 50V, X7R, Size 1206                    | 2    |
| D1     | SS3P6-E3           | Vishay <sup>(3)</sup>       | 3A, 60V Schottky Diode                                    | 1    |
|        | B360A              | Diodes <sup>(4)</sup>       |   |      |
| L1     | LQH55DN100M03      | Murata <sup>(1)</sup>       | 10µH, 1700mA  | 1    |
| R1     | CRCW06036K65FKEA   | Vishay Dale <sup>(3)</sup>  | Resistor, 6.65k, 1%, 1/10W, Size 0603                     | 1    |
| R2     | CRCW06034990FKEA   | Vishay Dale <sup>(3)</sup>  | Resistor, 499Ω, 1%, 1/10W, Size 0603                      | 1    |
| R3     | CRCW060310K0FKEA   | Vishay Dale <sup>(3)</sup>  | Resistor, 10k, 1%, 1/10W, Size 0603                       | 1    |
| U1     | MIC2601YML         | Micrel, Inc. <sup>(5)</sup> | 1.2A, 1.2MHz Wide Range Integrated Switch Boost Regulator | 1    |
|        | MIC2602YML         |                             | 1.2A, 2MHz Wide Range Integrated Switch Boost Regulator   |      |

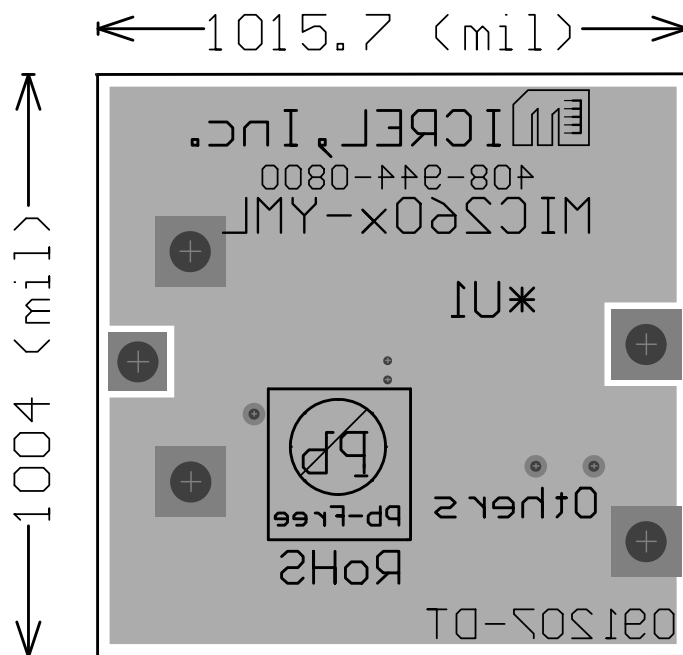
**Notes:**

1. Murata: [www.murata.com](http://www.murata.com)
2. AVX: [www.avx.com](http://www.avx.com)
3. Vishay: [www.vishay.com](http://www.vishay.com)
4. Diodes: [www.diodes.com](http://www.diodes.com)
5. Micrel, Inc.: [www.micrel.com](http://www.micrel.com)

### PCB Layout Recommendations

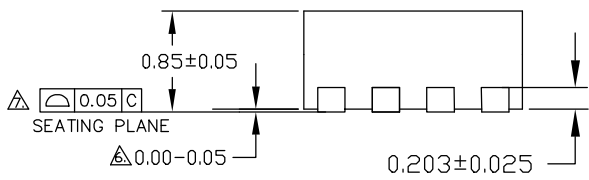
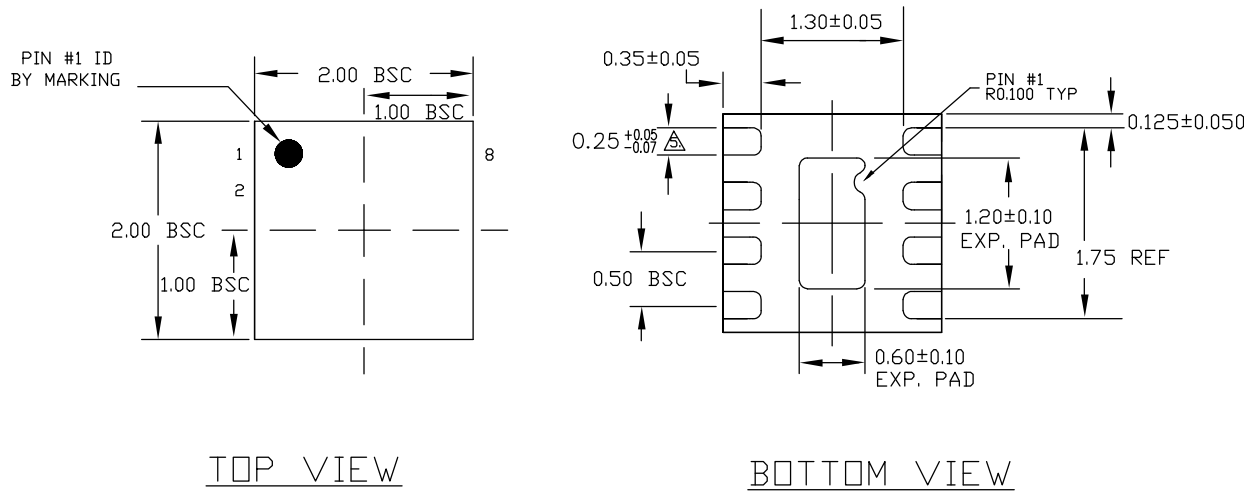


Top Layer



Bottom Layer

**Package Information**



- NOTE:
1. ALL DIMENSIONS ARE IN MILLIMETERS.
  2. MAX. PACKAGE WARPAGE IS 0.05 mm.
  3. MAXIMUM ALLOWABLE BURRS IS 0.076 mm IN ALL DIRECTIONS.
  4. PIN #1 ID ON TOP WILL BE LASER/INK MARKED.
- △ DIMENSION APPLIES TO METALIZED TERMINAL AND IS MEASURED BETWEEN 0.20 AND 0.25 mm FROM TERMINAL TIP.
  - △ APPLIED ONLY FOR TERMINALS.
  - △ APPLIED FOR EXPOSED PAD AND TERMINALS.

SIDE VIEW

**8-Pin 2mm x 2mm MLF<sup>®</sup> (ML)**

**MICREL, INC. 2180 FORTUNE DRIVE SAN JOSE, CA 95131 USA**  
 TEL +1 (408) 944-0800 FAX +1 (408) 474-1000 WEB <http://www.micrel.com>

The information furnished by Micrel in this data sheet is believed to be accurate and reliable. However, no responsibility is assumed by Micrel for its use. Micrel reserves the right to change circuitry and specifications at any time without notification to the customer.

Micrel Products are not designed or authorized for use as components in life support appliances, devices or systems where malfunction of a product can reasonably be expected to result in personal injury. Life support devices or systems are devices or systems that (a) are intended for surgical implant into the body or (b) support or sustain life, and whose failure to perform can be reasonably expected to result in a significant injury to the user. A Purchaser's use or sale of Micrel Products for use in life support appliances, devices or systems is a Purchaser's own risk and Purchaser agrees to fully indemnify Micrel for any damages resulting from such use or sale.

© 2008 Micrel, Incorporated.

## Looking for pricing, stock, or lifecycle information?

Click below to explore more details on WIN SOURCE:

-  [View MIC2602YML-TR on WIN SOURCE](#)
-  [Microchip Technology](#) Information

## Optimize Your Supply Chain with WIN SOURCE Solutions

-  Global Sourcing Solution
-  Obsolete Management
-  Cost Control Management
-  Shortage Management
-  Alternative Solution
-  Excess Inventory Management