



**THE DATASHEET OF  
MRF21030LR5**



# RF Power Field Effect Transistors

## N-Channel Enhancement-Mode Lateral MOSFETs

Designed for PCN and PCS base station applications with frequencies from 2000 to 2200 MHz. Suitable for FM, TDMA, CDMA and multicarrier amplifier applications. To be used in Class AB for PCN-PCS/cellular radio and WLL applications.

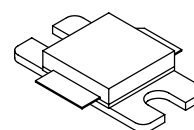
- Wideband CDMA Performance: -45 dB ACPR @ 4.096 MHz, 28 Volts Output Power — 3.5 Watts  
 Power Gain — 14 dB  
 Efficiency — 15%
- Capable of Handling 10:1 VSWR, @ 28 Vdc, 2110 MHz, 30 Watts CW Output Power

### Features

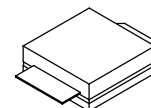
- High Gain, High Efficiency and High Linearity
- Integrated ESD Protection
- Designed for Maximum Gain and Insertion Phase Flatness
- Excellent Thermal Stability
- Characterized with Series Equivalent Large-Signal Impedance Parameters
- Low Gold Plating Thickness on Leads, 40μ" Nominal.
- RoHS Compliant
- In Tape and Reel. R3 Suffix = 250 Units per 32 mm, 13 Inch Reel.

**MRF21030LR3**  
**MRF21030LSR3**

**2200 MHz, 30 W, 28 V**  
**LATERAL N-CHANNEL**  
**RF POWER MOSFETs**



**CASE 465E-04, STYLE 1**  
**NI-400**  
**MRF21030LR3**



**CASE 465F-04, STYLE 1**  
**NI-400S**  
**MRF21030LSR3**

ARCHIVE INFORMATION

ARCHIVE INFORMATION

**Table 1. Maximum Ratings**

Rating	Symbol	Value	Unit
Drain-Source Voltage	V <sub>DSS</sub>	-0.5, +65	Vdc
Gate-Source Voltage	V <sub>GS</sub>	-0.5, +15	Vdc
Total Device Dissipation @ T <sub>C</sub> = 25°C Derate above 25°C	P <sub>D</sub>	83.3 0.48	W W/°C
Storage Temperature Range	T <sub>stg</sub>	- 65 to +150	°C
Case Operating Temperature	T <sub>C</sub>	150	°C
Operating Junction Temperature	T <sub>J</sub>	200	°C

**Table 2. Thermal Characteristics**

Characteristic	Symbol	Value	Unit
Thermal Resistance, Junction to Case	R <sub>θJC</sub>	2.1	°C/W

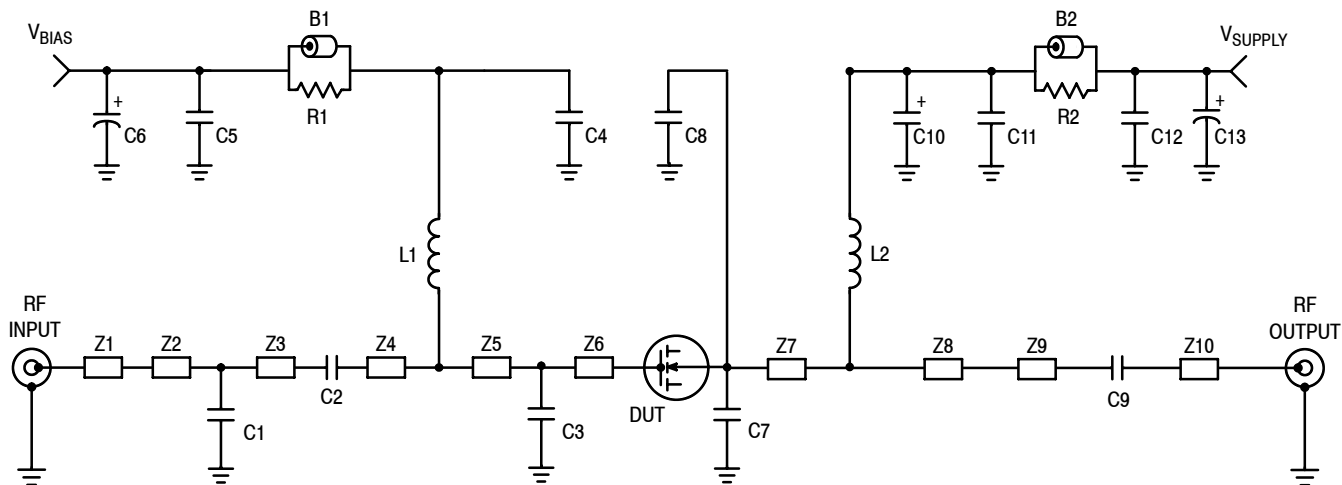
**Table 3. ESD Protection Characteristics**

Test Conditions	Class
Human Body Model	2 (Minimum)
Machine Model	M3 (Minimum)

**Table 4. Electrical Characteristics** ( $T_C = 25^\circ\text{C}$  unless otherwise noted)

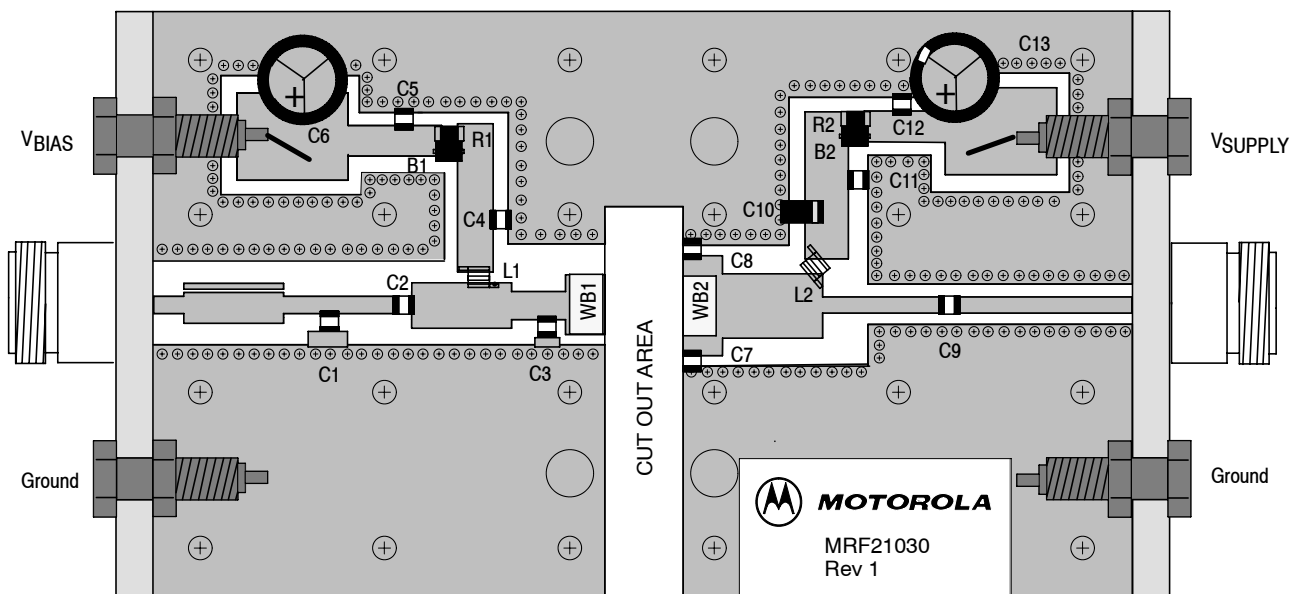
Characteristic	Symbol	Min	Typ	Max	Unit
<b>Off Characteristics</b>					
Drain-Source Breakdown Voltage ( $V_{GS} = 0 \text{ Vdc}$ , $I_D = 20 \mu\text{A}$ )	$V_{(BR)DSS}$	65	—	—	Vdc
Zero Gate Voltage Drain Current ( $V_{DS} = 28 \text{ Vdc}$ , $V_{GS} = 0 \text{ Vdc}$ )	$I_{DSS}$	—	—	1	$\mu\text{Adc}$
Gate-Source Leakage Current ( $V_{GS} = 5 \text{ Vdc}$ , $V_{DS} = 0 \text{ Vdc}$ )	$I_{GSS}$	—	—	1	$\mu\text{Adc}$
<b>On Characteristics</b>					
Gate Threshold Voltage ( $V_{DS} = 10 \text{ Vdc}$ , $I_D = 100 \mu\text{Adc}$ )	$V_{GS(th)}$	2	3	4	Vdc
Gate Quiescent Voltage ( $V_{DS} = 28 \text{ Vdc}$ , $I_D = 250 \text{ mA}$ )	$V_{GS(Q)}$	2	3.3	4.5	Vdc
Drain-Source On-Voltage ( $V_{GS} = 10 \text{ Vdc}$ , $I_D = 1 \text{ Adc}$ )	$V_{DS(on)}$	—	0.29	0.4	Vdc
Forward Transconductance ( $V_{DS} = 10 \text{ Vdc}$ , $I_D = 1 \text{ Adc}$ )	$g_{fs}$	—	2	—	S
<b>Dynamic Characteristics</b>					
Input Capacitance (Including Input Matching Capacitor in Package) <sup>(1)</sup> ( $V_{DS} = 28 \text{ Vdc}$ , $V_{GS} = 0$ , $f = 1 \text{ MHz}$ )	$C_{iss}$	—	98.5	—	pF
Output Capacitance <sup>(1)</sup> ( $V_{DS} = 28 \text{ Vdc}$ , $V_{GS} = 0$ , $f = 1 \text{ MHz}$ )	$C_{oss}$	—	37	—	pF
Reverse Transfer Capacitance ( $V_{DS} = 28 \text{ Vdc}$ , $V_{GS} = 0$ , $f = 1 \text{ MHz}$ )	$C_{rss}$	—	1.3	—	pF
<b>Functional Tests</b> (In Freescale Test Fixture, 50 ohm system)					
Two-Tone Common-Source Amplifier Power Gain ( $V_{DD} = 28 \text{ Vdc}$ , $P_{out} = 30 \text{ W PEP}$ , $I_{DQ} = 250 \text{ mA}$ , $f_1 = 2140.0 \text{ MHz}$ , $f_2 = 2140.1 \text{ MHz}$ )	$G_{ps}$	—	13	—	dB
Two-Tone Drain Efficiency ( $V_{DD} = 28 \text{ Vdc}$ , $P_{out} = 30 \text{ W PEP}$ , $I_{DQ} = 250 \text{ mA}$ , $f_1 = 2140.0 \text{ MHz}$ , $f_2 = 2140.1 \text{ MHz}$ )	$\eta$	—	33	—	%
3rd Order Intermodulation Distortion ( $V_{DD} = 28 \text{ Vdc}$ , $P_{out} = 30 \text{ W PEP}$ , $I_{DQ} = 250 \text{ mA}$ , $f_1 = 2140.0 \text{ MHz}$ , $f_2 = 2140.1 \text{ MHz}$ )	IMD	—	-30	—	dBc
Input Return Loss ( $V_{DD} = 28 \text{ Vdc}$ , $P_{out} = 30 \text{ W PEP}$ , $I_{DQ} = 250 \text{ mA}$ , $f_1 = 2140.0 \text{ MHz}$ , $f_2 = 2140.1 \text{ MHz}$ )	IRL	—	-13	—	dB
Two-Tone Common-Source Amplifier Power Gain ( $V_{DD} = 28 \text{ Vdc}$ , $P_{out} = 30 \text{ W PEP}$ , $I_{DQ} = 250 \text{ mA}$ , $f_1 = 2110.0 \text{ MHz}$ , $f_2 = 2110.1 \text{ MHz}$ and $f_1 = 2170.0 \text{ MHz}$ , $f_2 = 2170.1 \text{ MHz}$ )	$G_{ps}$	12	13	—	dB
Two-Tone Drain Efficiency ( $V_{DD} = 28 \text{ Vdc}$ , $P_{out} = 30 \text{ W PEP}$ , $I_{DQ} = 250 \text{ mA}$ , $f_1 = 2110.0 \text{ MHz}$ , $f_2 = 2110.1 \text{ MHz}$ and $f_1 = 2170.0 \text{ MHz}$ , $f_2 = 2170.1 \text{ MHz}$ )	$\eta$	31	33	—	%
3rd Order Intermodulation Distortion ( $V_{DD} = 28 \text{ Vdc}$ , $P_{out} = 30 \text{ W PEP}$ , $I_{DQ} = 250 \text{ mA}$ , $f_1 = 2110.0 \text{ MHz}$ , $f_2 = 2110.1 \text{ MHz}$ and $f_1 = 2170.0 \text{ MHz}$ , $f_2 = 2170.1 \text{ MHz}$ )	IMD	—	-30	-27.5	dBc
Input Return Loss ( $V_{DD} = 28 \text{ Vdc}$ , $P_{out} = 30 \text{ W PEP}$ , $I_{DQ} = 250 \text{ mA}$ , $f_1 = 2110.0 \text{ MHz}$ , $f_2 = 2110.1 \text{ MHz}$ and $f_1 = 2170.0 \text{ MHz}$ , $f_2 = 2170.1 \text{ MHz}$ )	IRL	—	-13	-9	dB

1. Part is internally matched both on input and output.



B1, B2	Short Ferrite Beads	Z1	0.153" x 0.087" Microstrip
C1	1 pF Chip Capacitor	Z2	0.509" x 0.156" Microstrip
C2	4.7 pF Chip Capacitor	Z3	0.572" x 0.087" Microstrip
C3	0.5 pF Chip Capacitor	Z4	0.509" x 0.232" Microstrip
C4	3.9 pF Chip Capacitor	Z5	0.277" x 0.143" Microstrip
C5, C12	0.1 $\mu$ F Chip Capacitors	Z6	0.200" x 0.305" Microstrip
C6, C13	470 $\mu$ F, 63 V Electrolytic Chip Capacitors	Z7	0.200" x 0.511" Microstrip
C7, C8	0.3 pF Chip Capacitors	Z8	0.510" x 0.328" Microstrip
C9	3.6 pF Chip Capacitor	Z9	0.608" x 0.081" Microstrip
C10	22 $\mu$ F Tantalum Chip Capacitor	PCB	Taconic TLX8, 30 mils, $\epsilon_r = 2.55$
C11	5.1 pF Chip Capacitor		
L1, L2	12.5 nH Inductors		
R1, R2	12 $\Omega$ Chip Resistors (1206)		

Figure 1. MRF21030LR3(SR3) Test Circuit Schematic



Freescale has begun the transition of marking Printed Circuit Boards (PCBs) with the Freescale Semiconductor signature/logo. PCBs may have either Motorola or Freescale markings during the transition period. These changes will have no impact on form, fit or function of the current product.

Figure 2. MRF21030LR3(SR3) Test Circuit Component Layout

### TYPICAL CHARACTERISTICS

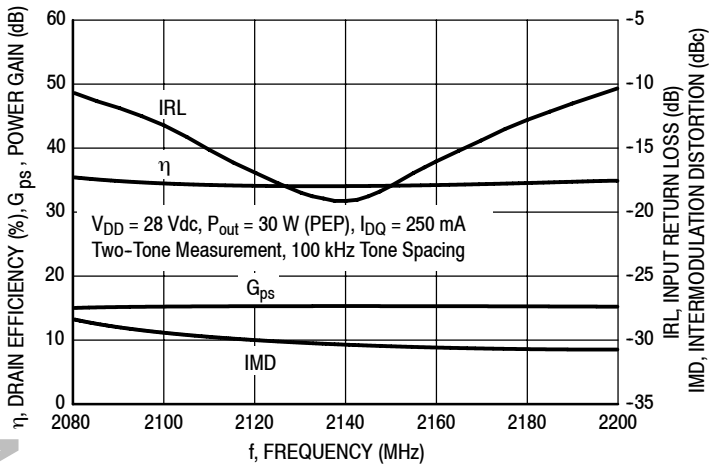


Figure 3. Class AB Broadband Circuit Performance

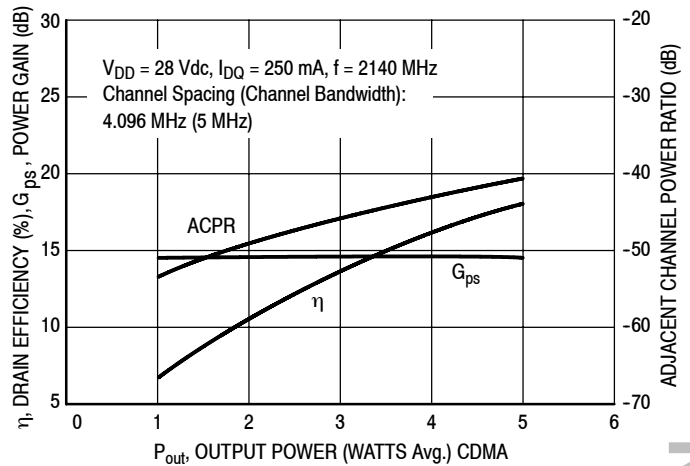


Figure 4. CDMA ACPR, Power Gain and Drain Efficiency versus Output Power

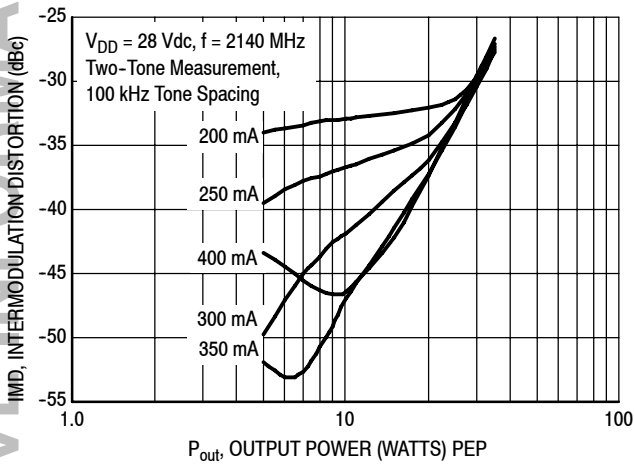


Figure 5. Intermodulation Distortion versus Output Power

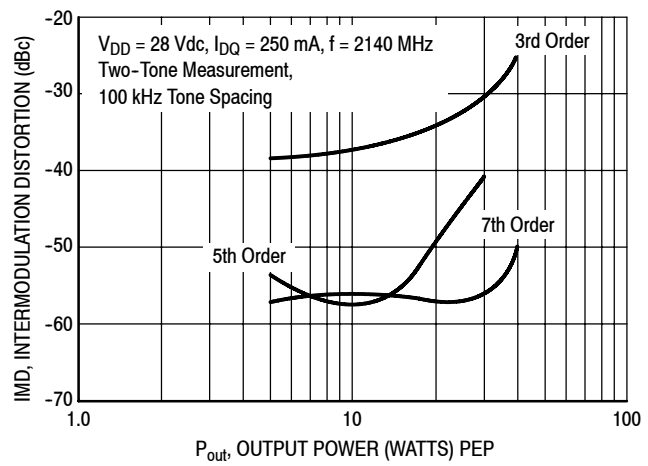


Figure 6. Intermodulation Distortion Products versus Output Power

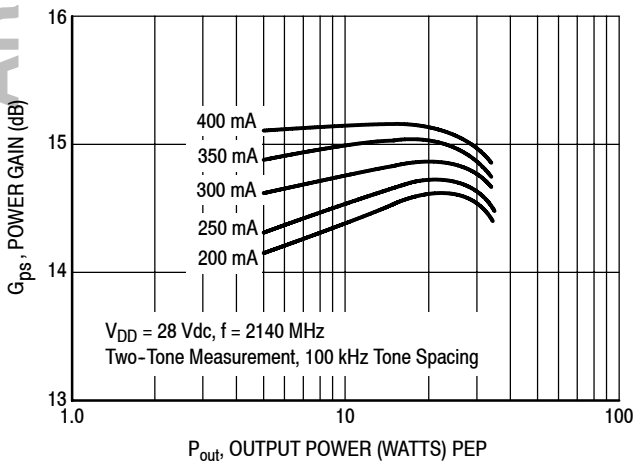


Figure 7. Power Gain versus Output Power

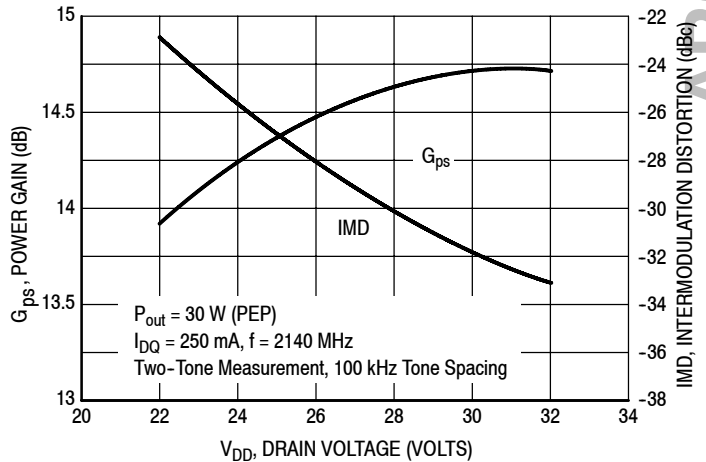
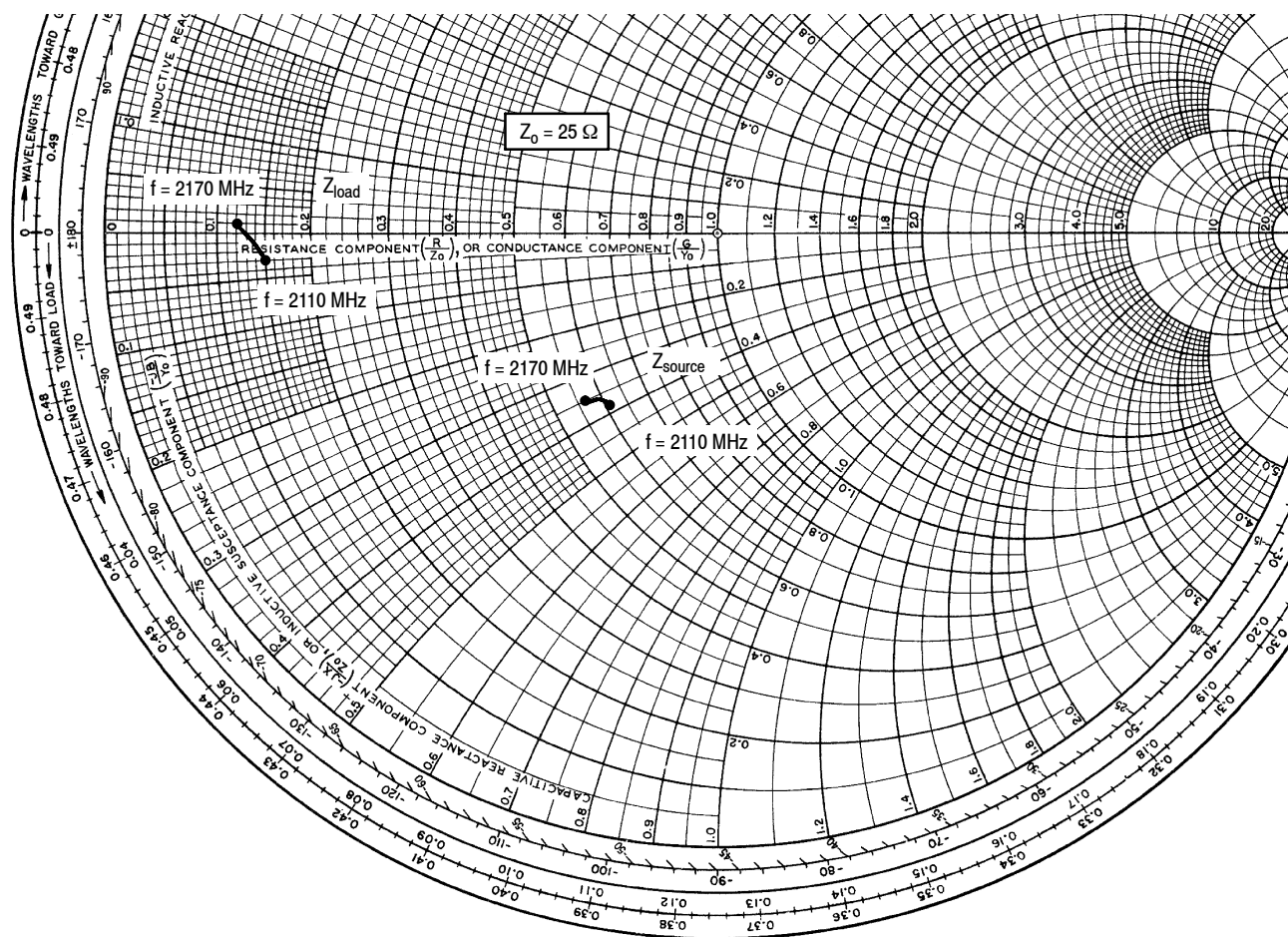


Figure 8. Power Gain and Intermodulation Distortion versus Supply Voltage



$V_{DD} = 28\text{ V}$ ,  $I_{DQ} = 250\text{ mA}$ ,  $P_{out} = 30\text{ W PEP}$

f MHz	$Z_{source}$ $\Omega$	$Z_{load}$ $\Omega$
2110	$15.3 - j9.4$	$3.7 - j0.78$
2140	$14.6 - j9.4$	$3.4 - j0.37$
2170	$14.3 - j8.8$	$3.0 + j0.13$

$Z_{source}$  = Test circuit impedance as measured from gate to ground.

$Z_{load}$  = Test circuit impedance as measured from drain to ground.

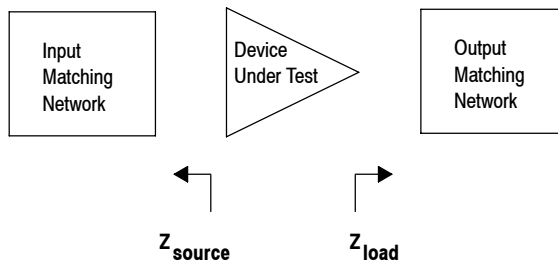
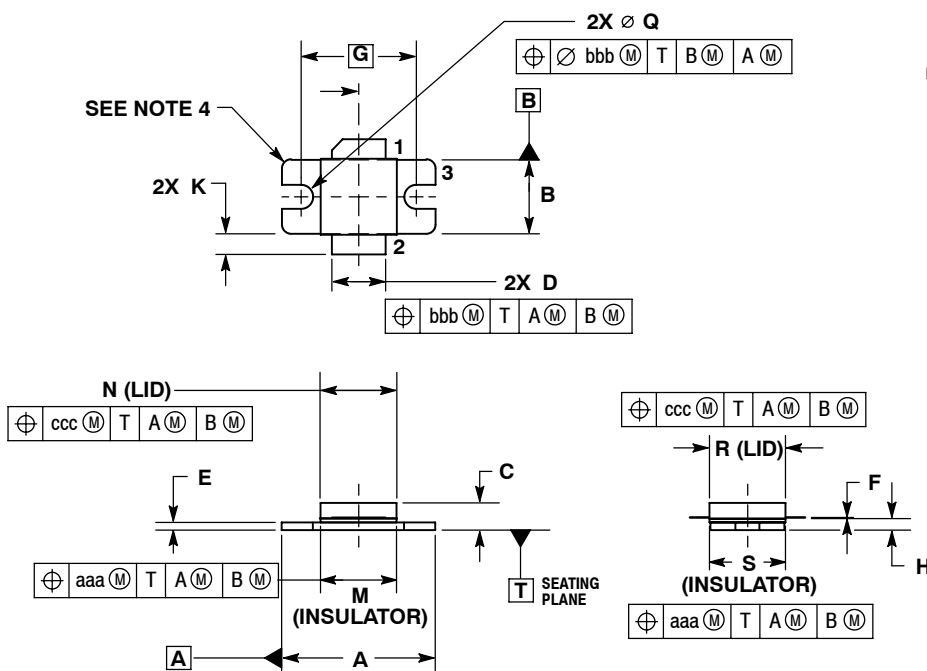


Figure 9. Series Equivalent Source and Load Impedance

ARCHIVE INFORMATION

ARCHIVE INFORMATION

### PACKAGE DIMENSIONS

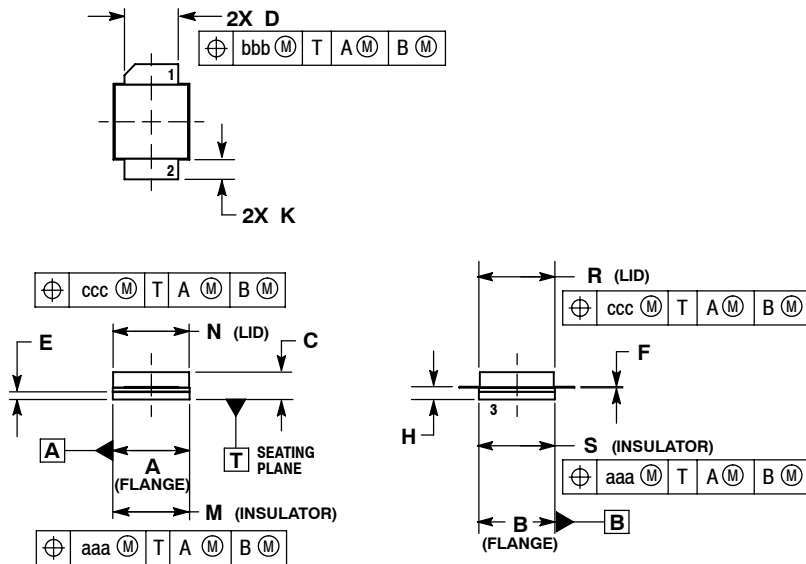


- NOTES:
1. CONTROLLING DIMENSION: INCH.
  2. INTERPRET DIMENSIONS AND TOLERANCES PER ASME Y14.5M, 1994.
  3. DIMENSION H IS MEASURED 0.030 (0.762) AWAY FROM PACKAGE BODY.
  4. INFORMATION ONLY: CORNER BREAK (4X) TO BE  $.060 \pm .005$  ( $1.52 \pm 0.13$ ) RADIUS OR  $.06 \pm .005$  ( $1.52 \pm 0.13$ ) x 45° CHAMFER.

DIM	INCHES		MILLIMETERS	
	MIN	MAX	MIN	MAX
A	.795	.805	20.19	20.44
B	.380	.390	9.65	9.9
C	.125	.163	3.17	4.14
D	.275	.285	6.98	7.24
E	.035	.045	0.89	1.14
F	.004	.006	0.10	0.15
G	.600 BSC		15.24 BSC	
H	.057	.067	1.45	1.7
K	.092	.122	2.33	3.1
M	.395	.405	10	10.3
N	.395	.405	10	10.3
Q	$\varnothing .120$	$\varnothing .130$	$\varnothing 3.05$	$\varnothing 3.3$
R	.395	.405	10	10.3
S	.395	.405	10	10.3
aaa	.005 BSC		0.127 BSC	
bbb	.010 BSC		0.254 BSC	
ccc	.015 BSC		0.381 BSC	

- STYLE 1:
- PIN 1. DRAIN
  - GATE
  - SOURCE

**CASE 465E-04  
ISSUE F  
NI-400  
MRF21030LR3**



- NOTES:
1. CONTROLLING DIMENSION: INCH.
  2. INTERPRET DIMENSIONS AND TOLERANCES PER ASME Y14.5M-1994.
  3. DIMENSION H IS MEASURED 0.030 (0.762) AWAY FROM PACKAGE BODY.

DIM	INCHES		MILLIMETERS	
	MIN	MAX	MIN	MAX
A	.395	.405	10.03	10.29
B	.395	.405	10.03	10.29
C	.125	.163	3.18	4.14
D	.275	.285	6.98	7.24
E	.035	.045	0.89	1.14
F	.004	.006	0.10	0.15
H	.057	.067	1.45	1.70
K	.092	.122	2.34	3.10
M	.395	.405	10.03	10.29
N	.395	.405	10.03	10.29
R	.395	.405	10.03	10.29
S	.395	.405	10.03	10.29
aaa	.005 REF		0.127 REF	
bbb	.010 REF		0.254 REF	
ccc	.015 REF		0.38 REF	

- STYLE 1:
- PIN 1. DRAIN
  - GATE
  - SOURCE

**CASE 465F-04  
ISSUE E  
NI-400S  
MRF21030LSR3**

ARCHIVE INFORMATION

ARCHIVE INFORMATION

## REVISION HISTORY

The following table summarizes revisions to this document.

Revision	Date	Description
12	Dec. 2010	<ul style="list-style-type: none"><li>MRF21030 Rev. 12 data sheet archived. Data sheet split due to change in part life cycle. See MRF21030-1 Rev. 13 for MRF21030LSR3 and MRF21030-2 Rev. 14 for MRF21030LR3.</li></ul>

ARCHIVE INFORMATION

ARCHIVE INFORMATION

**How to Reach Us:**

**Home Page:**  
www.freescale.com

**E-mail:**  
support@freescale.com

**USA/Europe or Locations Not Listed:**  
Freescale Semiconductor  
Technical Information Center, CH370  
1300 N. Alma School Road  
Chandler, Arizona 85224  
+1-800-521-6274 or +1-480-768-2130  
support@freescale.com

**Europe, Middle East, and Africa:**  
Freescale Halbleiter Deutschland GmbH  
Technical Information Center  
Schatzbogen 7  
81829 Muenchen, Germany  
+44 1296 380 456 (English)  
+46 8 52200080 (English)  
+49 89 92103 559 (German)  
+33 1 69 35 48 48 (French)  
support@freescale.com

**Japan:**  
Freescale Semiconductor Japan Ltd.  
Headquarters  
ARCO Tower 15F  
1-8-1, Shimo-Meguro, Meguro-ku,  
Tokyo 153-0064  
Japan  
0120 191014 or +81 3 5437 9125  
support.japan@freescale.com

**Asia/Pacific:**  
Freescale Semiconductor Hong Kong Ltd.  
Technical Information Center  
2 Dai King Street  
Tai Po Industrial Estate  
Tai Po, N.T., Hong Kong  
+800 2666 8080  
support.asia@freescale.com

**For Literature Requests Only:**  
Freescale Semiconductor Literature Distribution Center  
P.O. Box 5405  
Denver, Colorado 80217  
1-800-441-2447 or 303-675-2140  
Fax: 303-675-2150  
LDCForFreescaleSemiconductor@hibbertgroup.com

Information in this document is provided solely to enable system and software implementers to use Freescale Semiconductor products. There are no express or implied copyright licenses granted hereunder to design or fabricate any integrated circuits or integrated circuits based on the information in this document.

Freescale Semiconductor reserves the right to make changes without further notice to any products herein. Freescale Semiconductor makes no warranty, representation or guarantee regarding the suitability of its products for any particular purpose, nor does Freescale Semiconductor assume any liability arising out of the application or use of any product or circuit, and specifically disclaims any and all liability, including without limitation consequential or incidental damages. "Typical" parameters that may be provided in Freescale Semiconductor data sheets and/or specifications can and do vary in different applications and actual performance may vary over time. All operating parameters, including "Typicals", must be validated for each customer application by customer's technical experts. Freescale Semiconductor does not convey any license under its patent rights nor the rights of others. Freescale Semiconductor products are not designed, intended, or authorized for use as components in systems intended for surgical implant into the body, or other applications intended to support or sustain life, or for any other application in which the failure of the Freescale Semiconductor product could create a situation where personal injury or death may occur. Should Buyer purchase or use Freescale Semiconductor products for any such unintended or unauthorized application, Buyer shall indemnify and hold Freescale Semiconductor and its officers, employees, subsidiaries, affiliates, and distributors harmless against all claims, costs, damages, and expenses, and reasonable attorney fees arising out of, directly or indirectly, any claim of personal injury or death associated with such unintended or unauthorized use, even if such claim alleges that Freescale Semiconductor was negligent regarding the design or manufacture of the part.

Freescale™ and the Freescale logo are trademarks of Freescale Semiconductor, Inc. All other product or service names are the property of their respective owners.  
© Freescale Semiconductor, Inc. 2006, 2008. All rights reserved.

## Looking for pricing, stock, or lifecycle information?

Click below to explore more details on WIN SOURCE:

 [View MRF21030LR5 on WIN SOURCE](#)

 [NXP / Nexperia Information](#)

## Optimize Your Supply Chain with WIN SOURCE Solutions

-  Global Sourcing Solution
-  Obsolete Management
-  Cost Control Management
-  Shortage Management
-  Alternative Solution
-  Excess Inventory Management