



**THE DATASHEET OF
P0752.104NLT**



SMT POWER INDUCTORS

Unshielded Drum Core - P0751/2 Series



- Height: 5.5mm Max**
- Footprint: 13.0mm x 9.4mm Max**
- Current Rating: up to 6.8A**
- Inductance Range: 1.0μH to 1000μH**

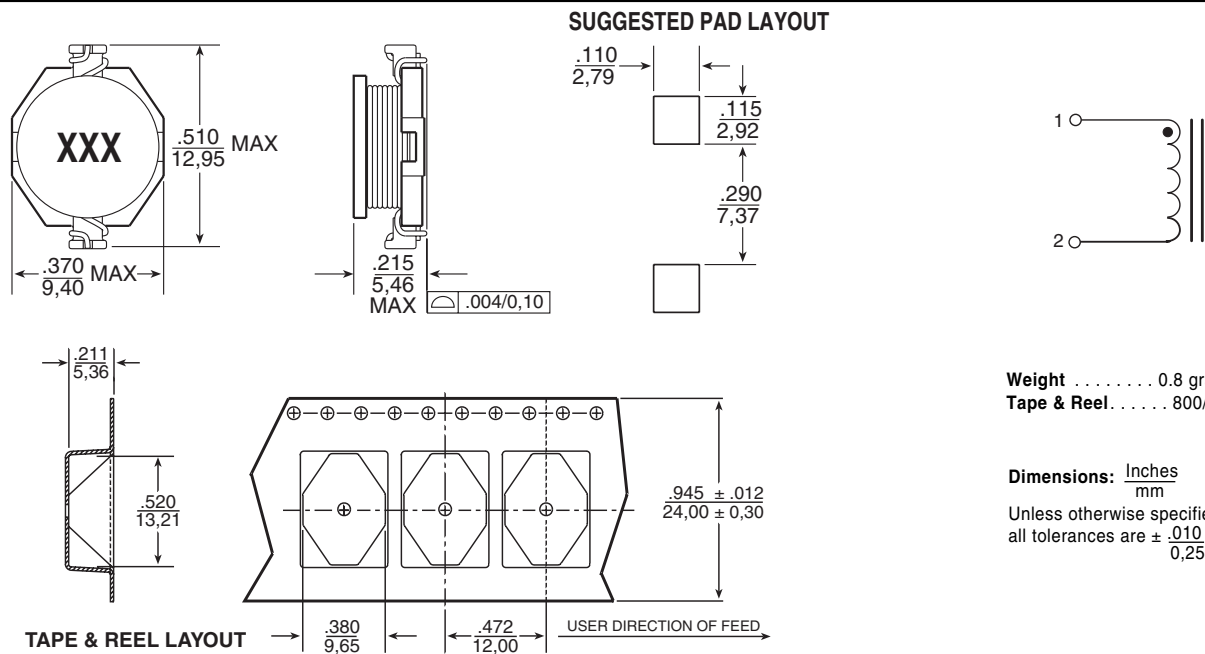
Electrical Specifications @ 25°C — Operating Temperature -40°C to +130°C

Part ^{6,7} Number	Inductance @ I _{PK} DC (μH ± 20%)	I _{rated} ⁵ (A)	DCR (MAX) (mΩ)	Saturation Current (A) @ 25°C	Heating Current (A)
P0751.102	1.0	6.8	10	9.0	6.8
P0751.152	1.5	6.4	12	8.0	6.4
P0751.222	2.2	6.1	15	7.0	6.1
P0751.332	3.3	5.4	18	6.4	5.4
P0751.472	4.7	4.8	33	5.4	4.8
P0751.682	6.8	4.4	44	4.6	4.4
P0751.103	10	3.8	50	3.8	3.9
P0751.153	15	3.0	55	3.0	3.1
P0751.223	22	2.6	114	2.6	2.7
P0751.333	33	2.0	120	2.0	2.1
P0751.473	47	1.6	168	1.6	1.8
P0751.683	68	1.4	240	1.4	1.5
P0752.104	100	1.2	380	1.2	1.3
P0752.154	150	1.0	570	1.0	1.0
P0752.224	220	0.8	840	0.8	0.8
P0752.334	330	0.6	1020	0.6	0.6
P0752.474	470	0.5	1460	0.5	0.5
P0752.684	680	0.4	2170	0.4	0.4
P0752.105	1000	0.3	3300	0.3	0.3

- NOTES:**
- The temperature of the component (ambient plus temperature rise) must be within the specified operating temperature range.
 - Inductance tested at 100kHz, 10mV_{RMS}
 - Inductance drop = 10% typical at the saturation current
 - ΔT = 15°C rise typical at the heating current
 - The rated current is the lower of the saturation or heating current
 - Optional Tape & Reel packaging can be ordered by adding a "T" suffix to the part number (i.e. P0751.102 becomes P0751.102T). Pulse complies to industry standard tape and reel specification EIA481.
 - To order RoHS compliant part, add the suffix "NL" to the part number (i.e. P0751.102 becomes P0751.102NL and P0751.102T becomes P0751.102NLT).

Mechanical

Schematic



Weight 0.8 grams
Tape & Reel 800/reel

Dimensions: Inches
 mm
 Unless otherwise specified,
 all tolerances are ± .010
 0,25

Looking for pricing, stock, or lifecycle information?

Click below to explore more details on WIN SOURCE:

 [View P0752.104NLT on WIN SOURCE](#)

 [Pulse Information](#)

Optimize Your Supply Chain with WIN SOURCE Solutions

-  Global Sourcing Solution
-  Obsolete Management
-  Cost Control Management
-  Shortage Management
-  Alternative Solution
-  Excess Inventory Management