

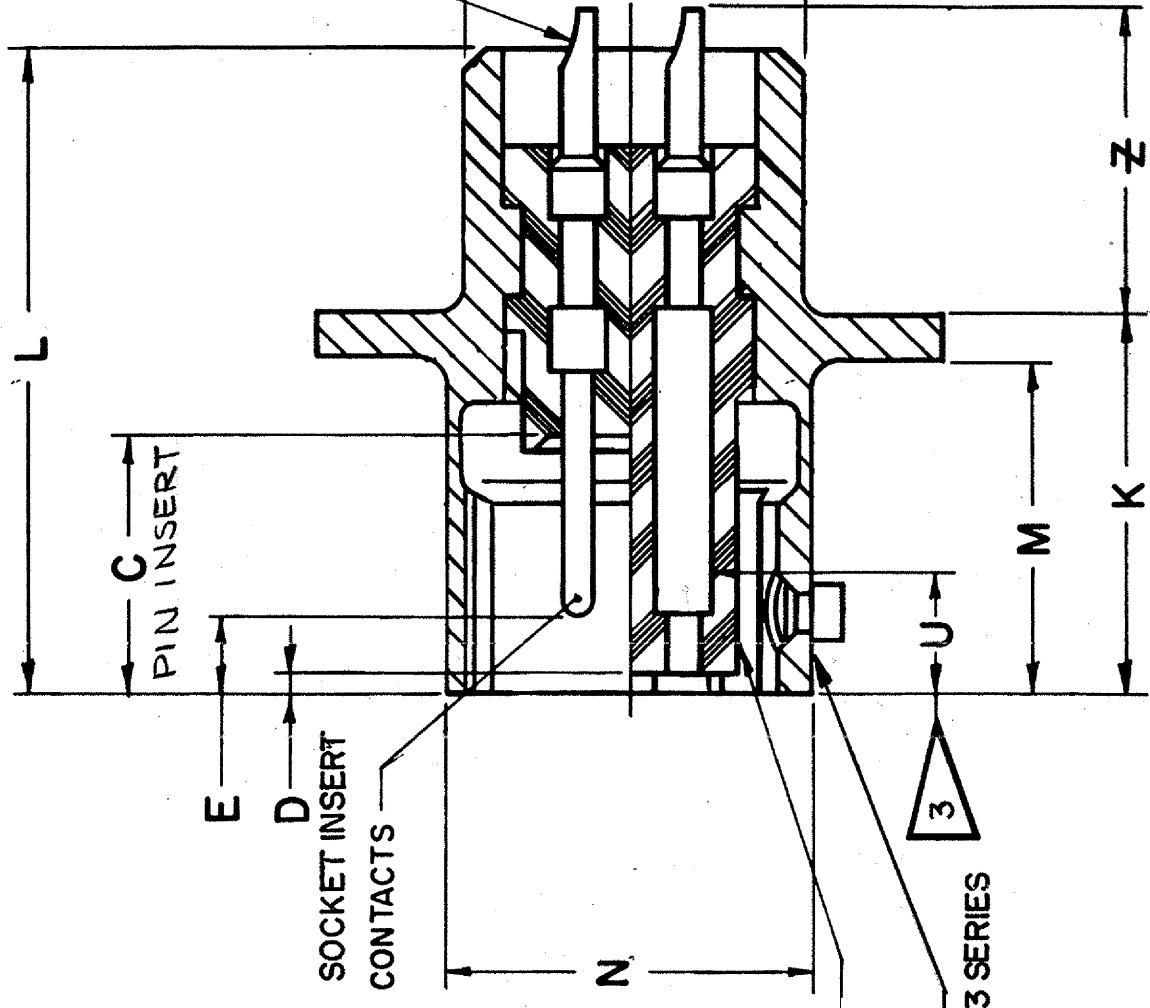
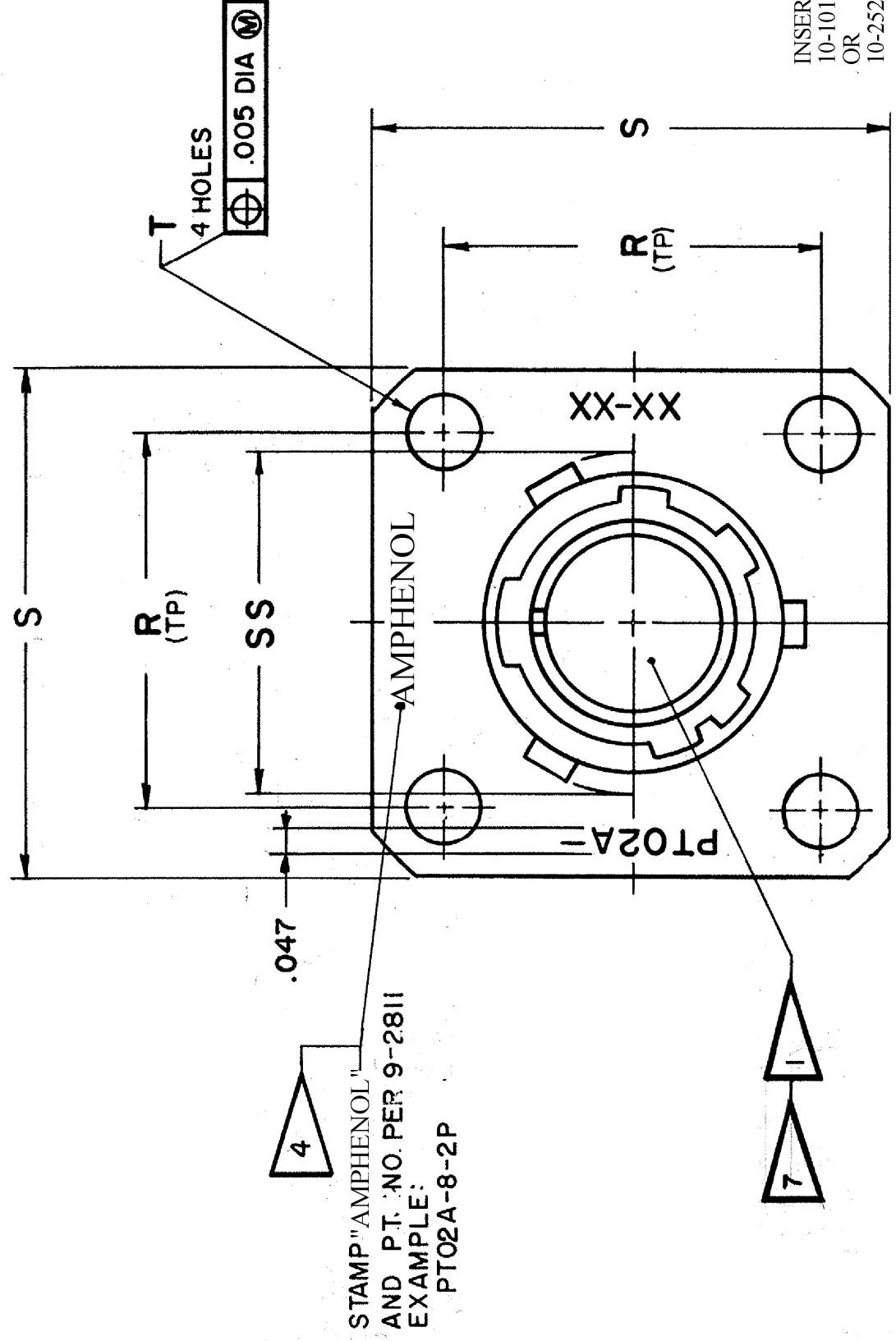


**THE DATASHEET OF
PT02A-14-19P**



REL. NO. 32508-147

CHG. NO.	SYM.	DESCRIPTION
45525-218	A1	REDRAWN SAME SIZE; RE (MFG)
45525-1135	A2	STANDARDIZED
54525-85	A3	WAS E PIN INSERT;
98879	B	(CL II) ADDED 10-25280 SERIES TO INSERT IDE



INSERT
10-101800 SERIES
OR
10-252806/824(-) SERIES

4
STAMP "AMPHENOL"
AND P.T. NO. PER 9-2811
EXAMPLE:
PT02A-8-2P

USE OF THIS DOCUMENT IS UNLIMITED. DOCUMENTS REFERENCED HEREON CONTAIN LIMITED RIGHTS DATA.

ITEM NO.	QTY RECD	DESCRIPTION	PART NUMBER
PARTS LIST			
UNLESS OTHERWISE SPECIFIED		DRAWN: NICHOLS	DATE: 1-1-57
LINEAR DIMENSIONS ARE IN INCHES.		CHECKED: <i>Tealun</i>	DATE: 10-28-65
TOLERANCES: 3 PLACES ± 010;		MATERIAL:	TITLE:
2 PLACES ± 03; 1 PLACE ± 1;		STANDARDS: 10-29-67	CODE IDENT NO. 77820
ANGLES ± 2°. OTHER STANDARDS PER SCINTILLA SPEC 9-3800 AND MIL-STD 8.		DRAFTING: <i>Advent 10-29-65 AM</i>	SCALE NONE
MATERIAL SPEC	PROCESS SPEC	ENGINEERING: <i>W. McManis 11-1-65</i>	
SEE SHEET 2		DEVELOPMENT: <i>[Signature] 10-27-65</i>	

SEE SHEET 2

NOTES: REF SYMBOL

ASSEMBLY NUMBER	PT NO.	C	D	E	K	L	M	N	R	S	T	U	Z	SS DIA	KK DIA
71-146206-	02A-6-	+0.010 -0.025	+0.010 -0.025	+0.010 -0.020	+0.021 -0.010	±.031	+0.010 -0.000	+0.001 -0.005	(TP)	+0.011 -0.010	±.005	MAX	+0.040 -0.050	+0.000 -0.016	+0.011 -0.000
		.337	.025	.085	.493	.743	.431	.348	.469	.688	.120	.153	.394	.439	.312
71-146208-	-8-							.473	.594	.812				.563	.438
71-146210-	-10-							.590	.719	.938				.680	.562
71-146212-	-12-							.750	.812	1.031				.859	.688
71-146214-	-14-							.875	.906	1.125				.984	.812
71-146216-	-16-							1.000	.969	1.219				1.108	.938
71-146218-	-18-							1.125	1.062	1.312				1.233	1.062
71-146220-	-20-	.399	.087	.147	.650	.994	.556	1.250	1.156	1.438		.215	.455	1.358	1.188
71-146222-	-22-				.650	.994	.556	1.375	1.250	1.562			.455	1.483	1.312
71-146224-	-24-				.683	1.027	.589	1.500	1.375	1.688	.147		.422	1.610	1.438
71-146225/50		NOT AVAILABLE													

5

7. FOR CONTACT ARRANGEMENTS, SEE L-15206/50.
8. UNITS ILLUSTRATED MEET THE MATERIAL & FINISH REQUIREMENTS OF MIL-C-26482.
9. FOR COMPLETE ASSEMBLY NO. & PT NO., ADD APPLICABLE INSERT ARRANGEMENT SUFFIX TO BASE NUMBERS LISTED ABOVE PER 9-2437-1.
10. STAMPING MAY BE ON EITHER SIDE OF FLANGE (ONE SIDE ONLY).
11. DISTANCE BETWEEN END OF SHELL & THE POINT AT WHICH A GAGE PIN, HAVING THE SAME BASIC DIAMETER AS THE MATING CONTACT & A SQUARE FACE, ENGAGES SOCKET CONTACT SPRING.
12. SEE DRAWING 71-146606/50 FOR REQUIRED MATING PLUG ASSEMBLIES.
13. INSERTS & CONTACTS MUST NOT BE REMOVED.

NOTES: REF SYMBOL

SOLDER WELL DATA

CONTACT	SIZE	QTY REQD	DESCRIPTION
WELL DIA	20	16	
WELL DEPTH	±.031 -0.000	.125	.188

THERMOCO DATA (WHE
MATERIA
CHROMEL
ALUMEL
IRON
CONSTANTAN
PART NUMBER

PARTS LIST

ITEM NO.	QTY REQD	DESCRIPTION	DRAY	DATE
		UNLESS OTHERWISE SPECIFIED LINEAR DIMENSIONS ARE IN INCHES. TOLERANCES: 3 PLACES ±.010; 2 PLACES ±.03; 1 PLACE ±.1; ANGLES ±2°. OTHER STANDARDS PER SCINTILLA SPEC 9-3800 AND MIL-STD 8. MATERIAL SPEC	NICHOLS	1-1-57
		TEST	CHECKED: <i>Teal</i>	DATE: 10-28-65
		ASSY	MATERIAL:	
		9-2437-1	STANDARDS: <i>10-19-65</i>	
		9-2811	DRAWING: <i>Subject 10-29-65 A.M.</i>	
			ENGINEERING: <i>W.M. Harrison</i>	
			DEVELOPMENT: <i>11-1-65</i>	

10. FOR ASSEMBLY NUMBERS 71-146214-91;
71-146218-80; 71-146218-90; 71-146218-91;
71-146220-90; 71-146222-4; 71-14622-7.
SEE INDIVIDUAL DRAWINGS.
9. FOR COMPONENT PART NUMBERS OF DESIRED ARRANGEMENT, SEE APPLICABLE PARTS LIST.
8. SEE WORK ORDER FOR PERMISSIBLE ADDITIONAL OR ALTERNATE STAMPING.

NOTES: REF SYMBOL

7080

IMAGED / Feb . 01 2007, 10:25 AM

THE TITLE: CODE IDENT 7782 SCALE NONE

Looking for pricing, stock, or lifecycle information?

Click below to explore more details on WIN SOURCE:

[View PT02A-14-19P on WIN SOURCE](#)

[Amphenol Industrial Operations Information](#)

Optimize Your Supply Chain with WIN SOURCE Solutions

- ✓ Global Sourcing Solution
- ✓ Obsolete Management
- ✓ Cost Control Management
- ✓ Shortage Management
- ✓ Alternative Solution
- ✓ Excess Inventory Management