

Sony Spresense Pack – Main Board + Extension Board + Camera

PRODUCT ID: 4420

SPRESENSE is a low-power board computer for the IoT that is equipped with a GPS receiver and supports High-Resolution Audio codecs. The board allows for IoT versatility and can be developed for a vast range of uses, such as a drone utilizing the GPS and high-performance processor, a smart speaker utilizing High-Resolution Audio recording and playback as well as the built-in full-digital amplifier, or a low-power time-lapse camera utilizing the camera interface. SPRESENSE will make the IoT smarter and more efficient.

Instead of hemming and hawing which IoT boards to pick for your project, we're offering an easy all-in-one pack!

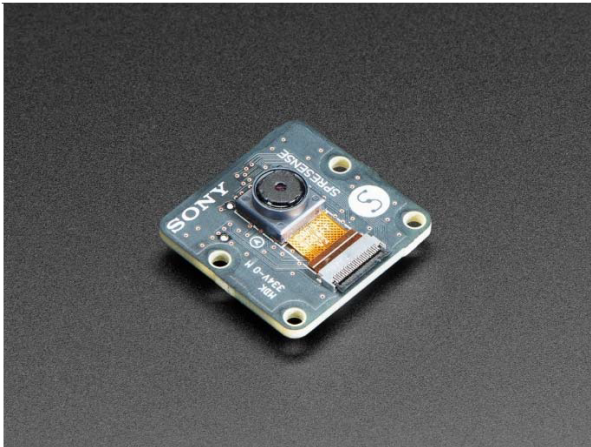
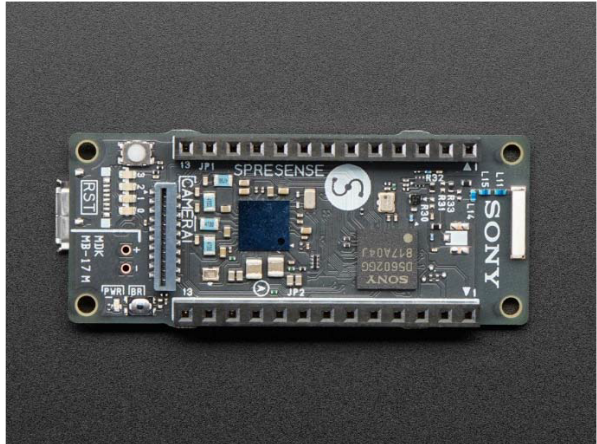
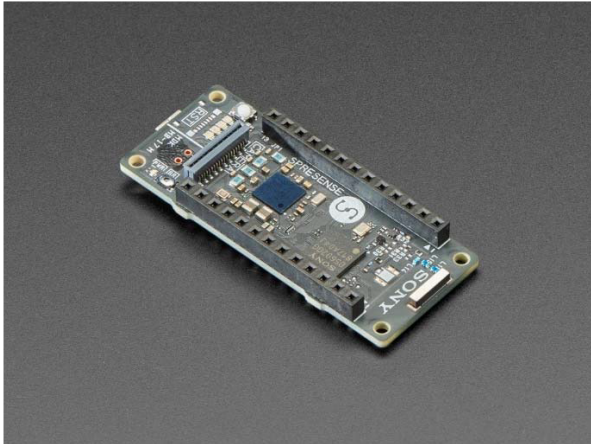
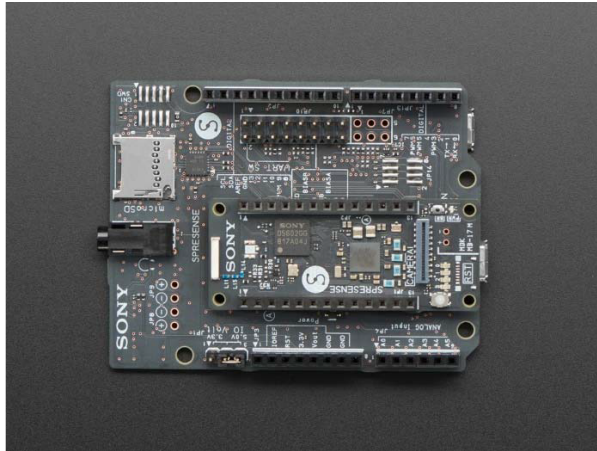
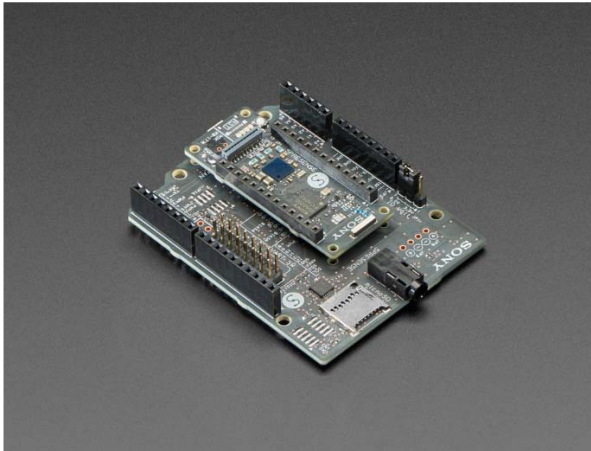
Includes:

- Sony Spresense Main Board – Sony's CXD5602 microcontroller runs 6 ARM Cortex-M4F cores with a clock speed of up to 156MHz and has an integrated GPS. Thanks to the FD-SOI (Fully Depleted Silicon On Insulator) production process, the CXD5602 chip is very power efficient which enables battery-dependent use cases.
- Sony Spresense Extension Board – allows developers to create IoT applications in a very short time and is supported by the Arduino IDE as well as the more advanced NuttX based SDK
- Sony Spresense 5MP Camera Board – Sony ISX012 has an effective pixel count of 5.11M pixels and an onboard encoder that can acquire pictures in JPEG, RAW, Y/C or RGB format.

You'll need a power supply, and/or micro USB cable for programming.

TECHNICAL DETAILS







<https://www.dafufruit.com/product/4420/12-4-19>

Looking for pricing, stock, or lifecycle information?

Click below to explore more details on WIN SOURCE:

-  [View 4420 on WIN SOURCE](#)
-  [Adafruit Industries LLC Information](#)

Optimize Your Supply Chain with WIN SOURCE Solutions

-  Global Sourcing Solution
-  Obsolete Management
-  Cost Control Management
-  Shortage Management
-  Alternative Solution
-  Excess Inventory Management