

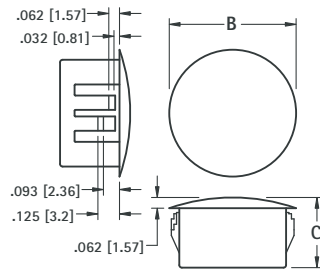
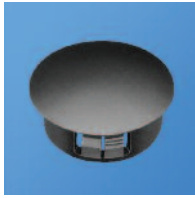


THE DATASHEET OF
7601



NYLON HOLE PLUGS

Closes unused chassis holes quickly and economically. Plugs are abrasion and vibration resistant.

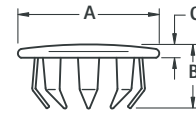


MATERIAL: Nylon 6/6, Matte Finish, Black

CAT. NO.	HOLE DIAMETER	PANEL THICK MAX	B	C
8600	.250 (6.4)	.062 (1.57)	.312 (7.9)	.312 (7.9)
8601	.312 (7.9)	.062 (1.57)	.375 (9.5)	.312 (7.9)
8602	.375 (9.5)	.125 (3.2)	.468 (11.9)	.406 (10.3)
8603	.500 (12.7)	.125 (3.2)	.578 (14.7)	.406 (10.3)
8604	.625 (15.9)	.125 (3.2)	.734 (18.6)	.406 (10.3)
8605	.750 (19.1)	.125 (3.2)	.921 (23.4)	.406 (10.3)
8606	.875 (22.2)	.125 (3.2)	1.015 (25.8)	.453 (11.5)
8607	1.000 (25.4)	.125 (3.2)	1.203 (30.6)	.453 (11.5)
8608	1.125 (28.6)	.125 (3.2)	1.218 (30.9)	.453 (11.5)
8609	1.250 (31.8)	.125 (3.2)	1.375 (34.9)	.453 (11.5)
8610	1.375 (34.9)	.125 (3.2)	1.500 (38.1)	.453 (11.5)
8611	1.500 (38.1)	.125 (3.2)	1.671 (42.4)	.453 (11.5)

STEEL HOLE PLUGS

Excellent spring retention. Plugs will cover chassis holes, wiring outlets, access holes or unused openings.



MATERIAL: Steel, Nickel Plate

CAT. NO.	HOLE DIAMETER	PANEL THICKNESS	A	B	C	PRONGS
7600	.250 (6.4)	.031-.062 (.81-1.57)	.406 (10.3)	.234 (5.9)	.062 (1.57)	6
7601	.312 (7.9)	.047-.078 (1.19-1.98)	.437 (11.1)	.250 (6.4)	.062 (1.57)	6
7602	.375 (9.5)	.047-.062 (1.19-1.57)	.500 (12.7)	.234 (5.9)	.062 (1.57)	6
7603	.500 (12.7)	.031-.062 (.81-1.57)	.656 (16.7)	.281 (7.1)	.078 (1.98)	8
7604	.625 (15.9)	.062-.093 (1.57-2.36)	.812 (20.6)	.296 (7.5)	.078 (1.98)	8
7605	.750 (19.1)	.062-.093 (1.5-2.36)	.921 (23.4)	.296 (7.5)	.078 (1.98)	12
7606	.875 (22.2)	.062-.093 (1.57-2.36)	1.062 (27.0)	.296 (7.5)	.062 (1.57)	12
7607	1.000 (25.4)	.062-.156 (1.57-3.9)	1.140 (29.0)	.328 (8.3)	.093 (2.36)	12
7608	1.125 (28.6)	.031-.125 (.79-3.2)	1.312 (33.3)	.343 (8.7)	.093 (2.36)	12
7609	1.250 (31.8)	.062-.093 (1.57-2.36)	1.437 (36.5)	.343 (8.7)	.093 (2.36)	12
7610	1.375 (34.9)	.031-.125 (.79-3.2)	1.562 (39.7)	.406 (10.3)	.078 (1.98)	12
7611	1.500 (38.1)	.031-.062 (.79-1.57)	1.640 (41.7)	.406 (10.3)	.093 (2.36)	12

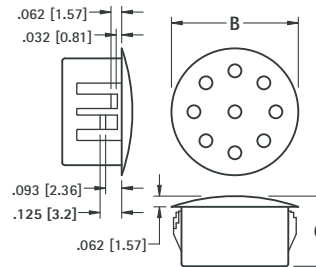
HOLE PLUGS & BUSHINGS

NYLON VENT PLUGS

Used to cover chassis holes while allowing air flow for ventilation.



- Snaps into .032 (.81) to .125 (3.2) thick panels.

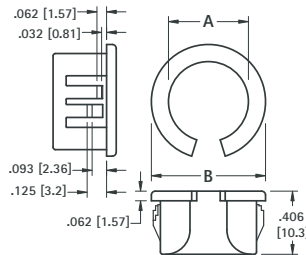


MATERIAL: Nylon 6/6, Matte Finish, Black

CAT. NO.	HOLE DIAMETER	B	C
8612	.875 (22.2)	1.015 (25.8)	.453 (11.5)
8613	1.000 (25.4)	1.218 (30.9)	.453 (11.5)

NYLON SPLIT BUSHINGS

Designed to be assembled into holes that already contain wire or cable. Versatile bushing can be used on all chassis from .032 (.81) to .125 (3.2).

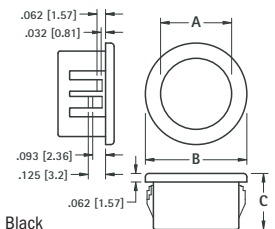


MATERIAL: Nylon 6/6, Black

CAT. NO.	HOLE SIZE REQUIRED	A INSIDE DIAMETER	B HEAD DIAMETER
8490	.375 (9.5)	.265 (6.7)	.421 (10.7)
8491	.500 (12.7)	.312 (7.9)	.562 (14.3)
8492	.562 (14.3)	.390 (9.9)	.640 (16.3)
8493	.625 (15.9)	.453 (11.5)	.687 (17.4)
8494	.750 (19.1)	.546 (13.9)	.796 (20.2)
8495	.875 (22.2)	.671 (17.0)	.921 (23.4)
8496	1.000 (25.4)	.796 (20.2)	1.062 (27.0)

NYLON INSULATING BUSHINGS

Snaps into panel hole to provide protection for wire, cable and tubing from sharp uneven edges.





MATERIAL: Nylon 6/6, Black

CAT. NO.	HOLE SIZE REQUIRED	MAXIMUM CHASSIS THICKNESS	A INSIDE DIAMETER	B HEAD DIAMETER	C OVERALL HEIGHT
8470	.250 (6.4)	.062 (1.57)	.125 (3.2)	.312 (7.9)	.312 (7.9)
8471	.312 (7.9)	.062 (1.57)	.187 (4.7)	.375 (9.5)	.312 (7.9)
8472	.375 (9.5)	.125 (3.2)	.250 (6.4)	.468 (11.9)	.406 (10.3)
8473	.437 (11.1)	.125 (3.2)	.312 (7.9)	.531 (13.5)	.406 (10.3)
8474	.500 (12.7)	.125 (3.2)	.375 (9.5)	.578 (14.7)	.406 (10.3)
8475	.562 (14.3)	.125 (3.2)	.437 (11.1)	.656 (16.7)	.406 (10.3)
8476	.625 (15.9)	.125 (3.2)	.500 (12.7)	.718 (18.2)	.406 (10.3)
8477	.750 (19.1)	.125 (3.2)	.562 (14.3)	.843 (21.4)	.406 (10.3)
8478	.875 (22.2)	.125 (3.2)	.625 (15.9)	.953 (24.2)	.453 (11.5)
8479	1.000 (25.4)	.125 (3.2)	.750 (19.1)	1.125 (28.6)	.453 (11.5)
8480	1.187 (30.1)	.125 (3.2)	.937 (23.8)	1.312 (33.3)	.453 (11.5)
8481	1.250 (31.8)	.125 (3.2)	.937 (23.8)	1.359 (34.5)	.453 (11.5)
8482	1.375 (34.9)	.125 (3.2)	1.000 (25.4)	1.468 (37.3)	.453 (11.5)
8483	1.500 (38.1)	.125 (3.2)	1.062 (27.0)	1.609 (40.9)	.453 (11.5)
8484	1.750 (44.5)	.125 (3.2)	1.375 (34.9)	1.875 (47.6)	.453 (11.5)
8485	2.000 (50.8)	.125 (3.2)	1.625 (41.3)	2.125 (54.0)	.453 (11.5)
8486	2.500 (63.5)	.250 (6.4)	1.968 (50.0)	2.656 (67.5)	.718 (18.2)

Looking for pricing, stock, or lifecycle information?

Click below to explore more details on WIN SOURCE:

-  [View 7601 on WIN SOURCE](#)
-  [Keystone Electronics Information](#)

Optimize Your Supply Chain with WIN SOURCE Solutions

-  Global Sourcing Solution
-  Obsolete Management
-  Cost Control Management
-  Shortage Management
-  Alternative Solution
-  Excess Inventory Management