

XDSL SPLITTER FILTER MODULE

B8887NL

SmartER Series



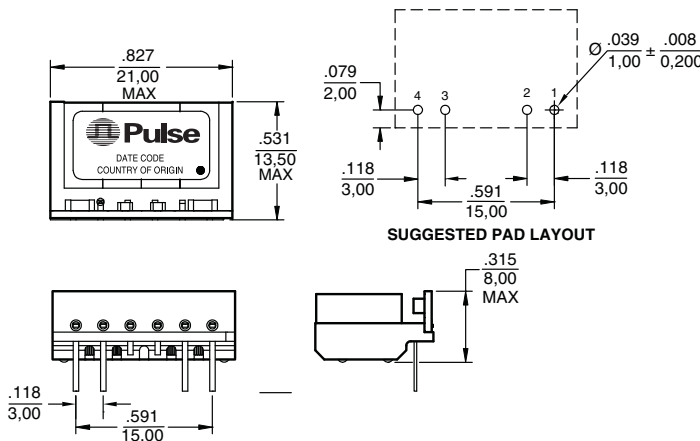
-  POTS CO splitter for standard ADSL / VDSL2 applications
-  LPF compliant to China YD/T 1187-2006 ADSL2+ and VDSL2 requirements
-  LPF matched to 600 Ω impedance
-  Low profile part
-  Compliant with Broadband Forum TR-127 standard for VDSL2 applications
-  Patented technology US7598837, US7598839, CN1667763, EP1644943, TWI316724, CA2531599

Electrical Specifications @ 25°C

PARAMETER	FREQUENCY	
POTS Impedance	100 Hz to 3.4k Hz	600 Ω
POTS Insertion Loss	1 kHz	0.3 dB MAX
POTS Insertion Loss Distortion relative to 1 kHz	300 Hz to 3.4 kHz	0.3 dB MAX
POTS Return Loss	300 Hz to 500 Hz / 2 kHz-3.4 kHz	14 dB MIN
	500 Hz to 2kHz	18 dB MIN
POTS Group Delay	500 Hz to 3.4 kHz	150 μ s MAX
Longitudinal Balance	50 Hz to 600 Hz	40 dB MIN
	600 Hz to 3.4 kHz	46 dB MIN
	3.4k Hz to 30 kHz	40 dB MIN
	30 kHz to 1104 kHz	45 dB MIN
	1104 kHz to 12 MHz	30 dB MIN
xDSL Attenuation	20kHz to 138 kHz	45 dB MIN
	138 kHz to 17 MHz	55 dB MIN
Tip to Ring Capacitance	—	20 nF MIN 115 nF MAX
Tip to Ring Insulation	—	5 M Ω MIN
DC Current	—	100 mA MAX
Total DC Resistance	—	25 Ω MAX

Mechanical

B8887NL



Weight 5.0 grams
 Tray60/tray
 Dimensions: $\frac{\text{Inches}}{\text{mm}}$
 Unless otherwise specified, all tolerances are $\pm \frac{.010}{0,25}$

XDSL SPLITTER FILTER MODULE

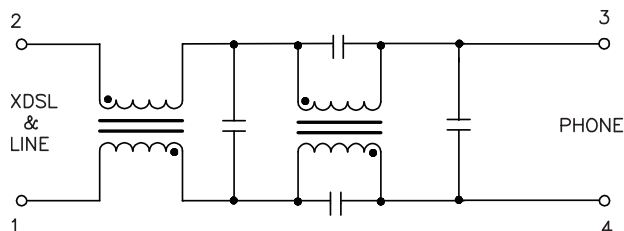
B8887NL

SmartER Series



Schematic

B8887NL



For More Information:

Pulse Worldwide Headquarters

12220 World Trade Dr.
San Diego, CA 92128
U.S.A.

www.pulseeng.com

Tel: 858 674 8100
Fax: 858 674 8262

Pulse Europe

Zeppelinstrasse 15
D-71083 Herrenberg
Germany

Tel: 49 7032 7806 0
Fax: 49 7032 7806 135

Pulse China Headquarters

B402, Shenzhen Academy of
Aerospace Technology Bldg.
10th Kejinan Rd.
High-Tech Zone
Nanshan District
Shenzhen, PR China 518057

Tel: 86 755 33966678
Fax: 86 755 33966700

Pulse North China

Room 2704/2705
Super Ocean Finance Ctr.
2067 Yan An Rd. West
Shanghai 200336
China

Tel: 86 21 62787060
Fax: 86 2162786973

Pulse South Asia

135 Joo Seng Rd.
#03-02
PM Industrial Bldg.
Singapore 368363

Tel: 65 6287 8998
Fax: 65 6287 8998

Pulse North Asia

3F, No. 198
Zhongyuan Rd.
Zhongli City
Taoyuan County 320
Taiwan R. O. C.

Tel: 886 3 4356768
Fax: 886 3 4356823 (Pulse)
Fax: 886 3 4356820 (FRE)

Performance warranty of products offered on this data sheet is limited to the parameters specified. Data is subject to change without notice. Other brand and product names mentioned herein may be trademarks or registered trademarks of their respective owners.

© Copyright, 2010. Pulse Engineering, Inc. All rights reserved.

Looking for pricing, stock, or lifecycle information?

Click below to explore more details on WIN SOURCE:

 [View B8887NL on WIN SOURCE](#)

 [Pulse Information](#)

Optimize Your Supply Chain with WIN SOURCE Solutions

-  Global Sourcing Solution
-  Obsolete Management
-  Cost Control Management
-  Shortage Management
-  Alternative Solution
-  Excess Inventory Management