



**THE DATASHEET OF
CDRH8D43RT125NP-220MC**



SMD Power Inductor CDRH8D43R/T125



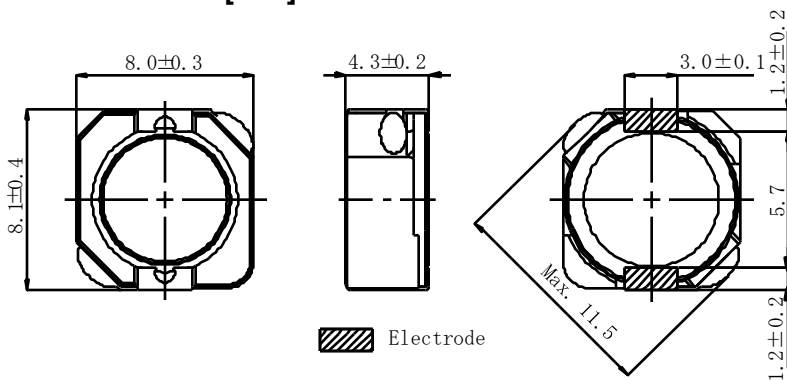
Description

- Ferrite drum core construction.
- Magnetically shielded.
- L × W × H: 8.5 × 8.3 × 4.5 mm Max.
- Product weight: 1.0g(Ref.)
- Moisture Sensitivity Level: 1
- RoHS compliance.

Environmental Data

- Operating temperature range: -40°C ~ +125°C (including coil's self temperature rise)
- Storage temperature range: -40°C ~ +125°C
- Solder reflow temperature: 260 °C peak.

Dimension - [mm]



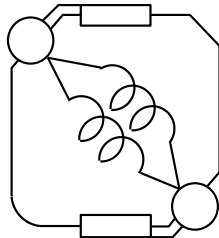
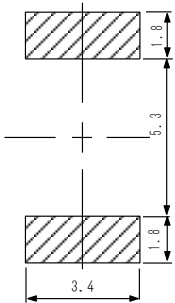
Packaging

- Carrier tape and reel packaging
- 13.0" diameter reel
- 500pcs per reel

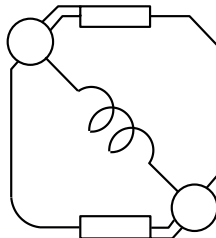
Applications

- Automotive and other high temperature, high reliability application.

Land pattern and Schematics - [mm]



(1.0µH ~ 10µH)



(15µH ~ 330µH)



Electrical Characteristics

| Part No. | Stamp | Inductance (μ H) [Within] ※1 | D.C.R. (m Ω) [Max.] (at 20°C) ※2 | Saturation current (A) ※3 | | Temperature rise current (A) ※4 |
|-----------------------|-------|--------------------------------------|--|------------------------------|----------------------|---------------------------------------|
| | | | | (at 20°C) | (at 125°C) (Typ.) | |
| CDRH8D43RT125NP-1R0NC | 1R0 | 1.0 \pm 30% | 9.7(7.8) | 8.00 | 6.00 | 7.50 |
| CDRH8D43RT125NP-1R8NC | 1R8 | 1.8 \pm 30% | 12.1(9.7) | 7.30 | 5.80 | 6.40 |
| CDRH8D43RT125NP-2R4NC | 2R4 | 2.4 \pm 30% | 14.0(11.2) | 7.10 | 5.60 | 5.80 |
| CDRH8D43RT125NP-3R3NC | 3R3 | 3.3 \pm 30% | 16.3(13.0) | 6.10 | 4.70 | 5.20 |
| CDRH8D43RT125NP-4R3NC | 4R3 | 4.3 \pm 30% | 23.5(18.8) | 5.40 | 4.20 | 4.30 |
| CDRH8D43RT125NP-5R6NC | 5R6 | 5.6 \pm 30% | 26.9(21.5) | 4.50 | 3.50 | 3.70 |
| CDRH8D43RT125NP-6R8NC | 6R8 | 6.8 \pm 30% | 29.8(23.9) | 4.20 | 3.30 | 3.45 |
| CDRH8D43RT125NP-8R2NC | 8R2 | 8.2 \pm 30% | 40.8(32.6) | 4.00 | 3.20 | 2.85 |
| CDRH8D43RT125NP-100MC | 100 | 10 \pm 20% | 45.0(36.0) | 3.50 | 2.75 | 2.70 |
| CDRH8D43RT125NP-150MC | 150 | 15 \pm 20% | 61.8(49.4) | 2.90 | 2.30 | 2.30 |
| CDRH8D43RT125NP-220MC | 220 | 22 \pm 20% | 77.6(62.0) | 2.35 | 1.85 | 2.05 |
| CDRH8D43RT125NP-330MC | 330 | 33 \pm 20% | 123(98.5) | 1.95 | 1.55 | 1.55 |
| CDRH8D43RT125NP-470MC | 470 | 47 \pm 20% | 186(149) | 1.60 | 1.30 | 1.30 |
| CDRH8D43RT125NP-680MC | 680 | 68 \pm 20% | 288(231) | 1.30 | 1.05 | 1.03 |
| CDRH8D43RT125NP-101MC | 101 | 100 \pm 20% | 353(282) | 1.10 | 0.87 | 0.93 |
| CDRH8D43RT125NP-151MC | 151 | 150 \pm 20% | 575(460) | 0.91 | 0.72 | 0.76 |
| CDRH8D43RT125NP-221MC | 221 | 220 \pm 20% | 861(689) | 0.75 | 0.60 | 0.60 |
| CDRH8D43RT125NP-331MC | 331 | 330 \pm 20% | 1330(1068) | 0.62 | 0.50 | 0.48 |

※ 1 Measuring frequency inductance at 100kHz.

※ 2 () are typical value.

※ 3 Saturation current: The value of D.C. current when the inductance decreases to 65% of it's nominal value.

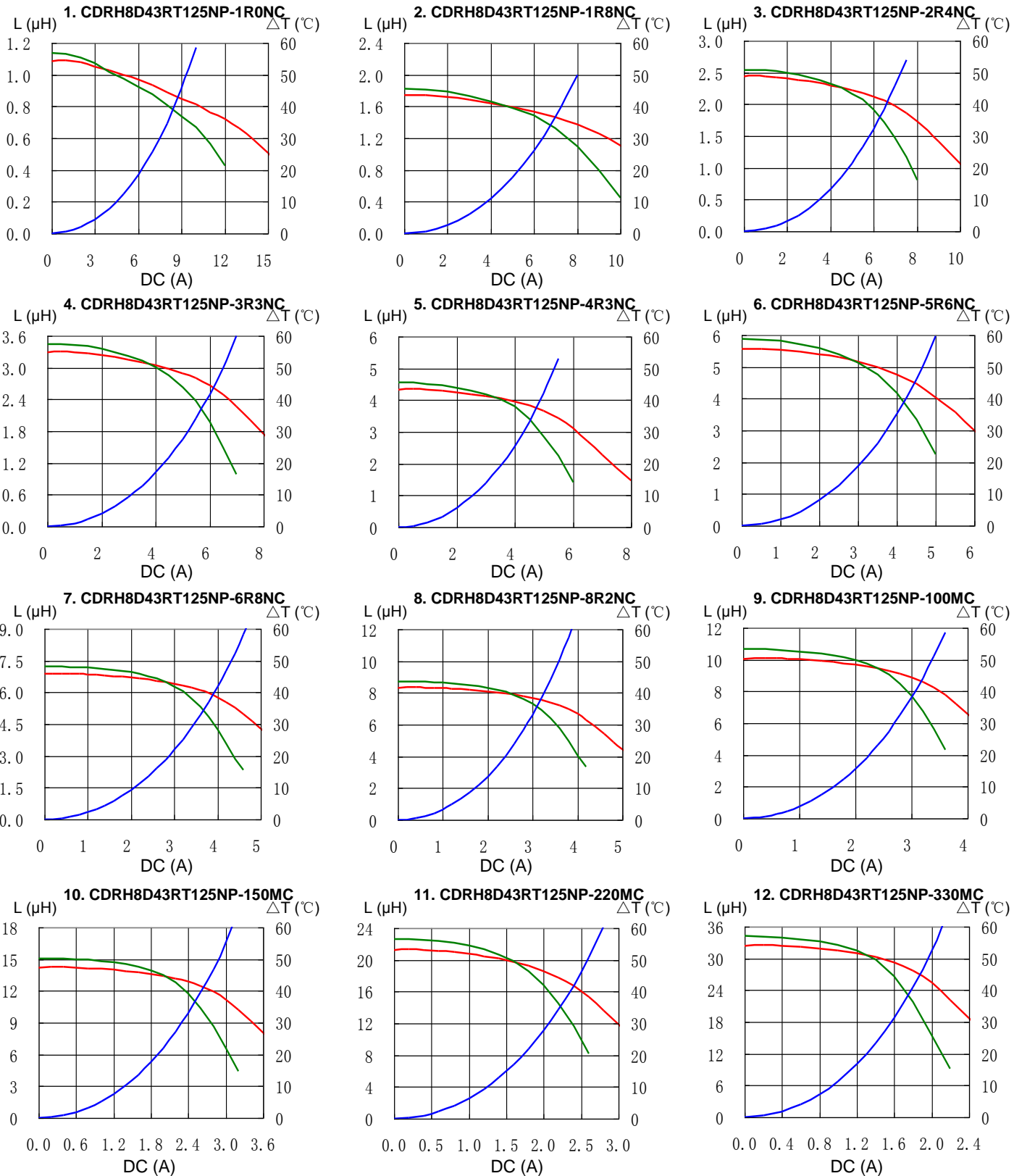
※ 4 Temperature rise current: The value of D.C. current when the temperature rise is $\Delta t=40^{\circ}\text{C}$ ($T_a=20^{\circ}\text{C}$).

SMD Power Inductor CDRH8D43R/T125



Saturation Current & Temperature Rise Graph

— L (20°C) — L (125°C) — ΔT

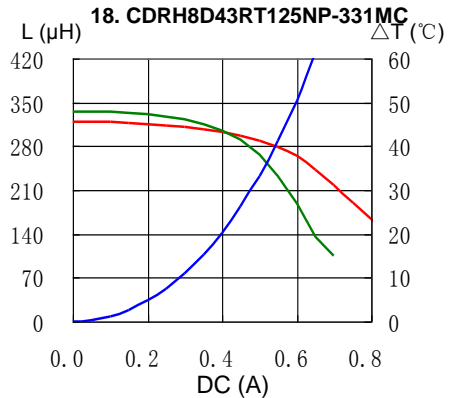
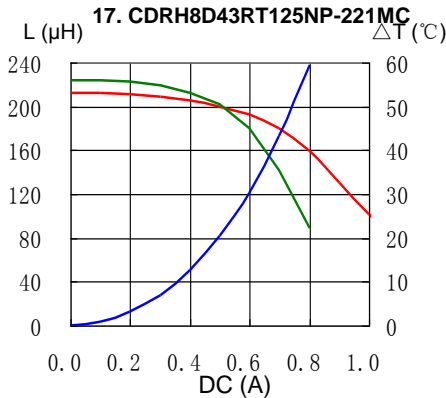
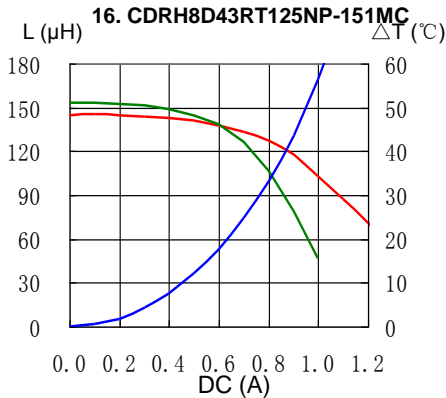
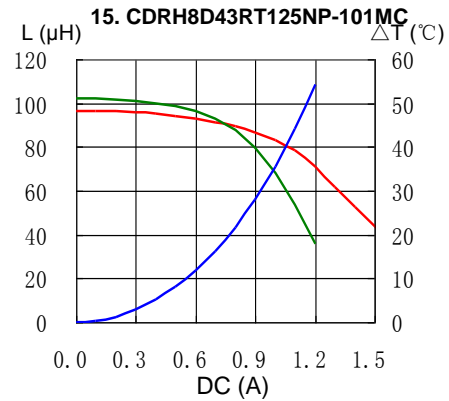
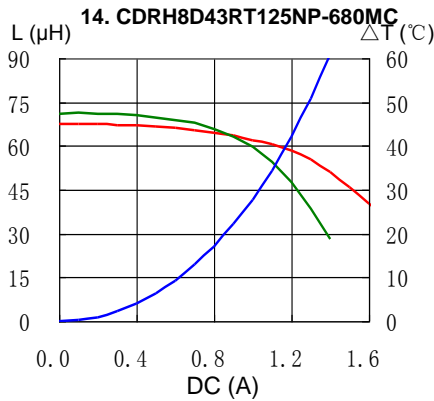
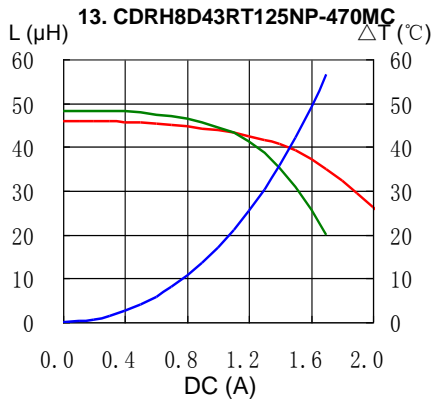


SMD Power Inductor CDRH8D43R/T125



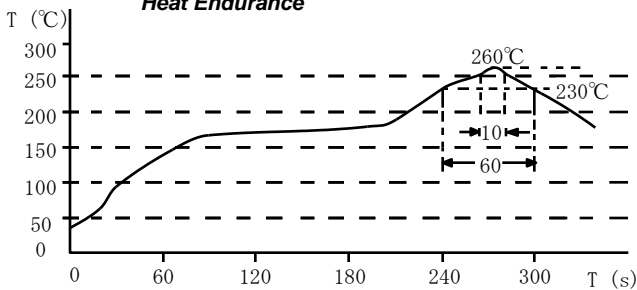
Saturation Current & Temperature Rise Graph

— L (20°C) — L (125°C) — ΔT

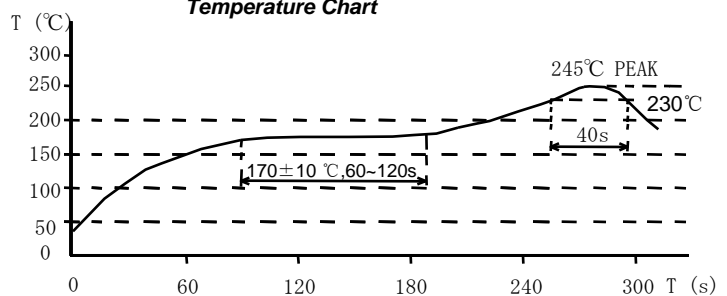


Solder Reflow Condition

Heat Endurance



Temperature Chart



Please refer to the sales offices on our website - <http://www.sumida.com>

Hong Kong

Tel.+852-2880-6781
FAX.+852-2565-9600
sales@hk.sumida.com

Saitama(Japan)

Tel.+81-48-691-7300
FAX.+81-48-691-7340
sales@jp.sumida.com

Chicago

Tel.+1-847-545-6700
FAX. +1-847-545-6720
sales@us.sumida.com

Shanghai

Tel.+86-21-5836-3299
FAX.+86-21-5836-3266
shanghai.sales@cn.sumida.com

Seoul

Tel.+82-2-6237-0777
FAX.+82-2-6237-0778
sales@kr.sumida.com

Obernzell

Tel.+49-8591-937-0
FAX. +49-8591-937-103
contact@eu.sumida.com

Shenzhen

Tel.+86-755-8291-0228
FAX.+86-755-8291-0338
shenzhen.sales@cn.sumida.com

Singapore

Tel.+65-6296-3388
FAX.+65-6841-4426
sales@sg.sumida.com

Neumarkt

Tel.+49-9181-4509-110
FAX. +49-9181-4509-310
infocomp@eu.sumida.com

Taipei

Tel.+886-2-8751-2737
FAX.+886-2-8751-2738
sales@tw.sumida.com

San Jose

Tel.+1-408-321-9660
FAX.+1-408-321-9308
sales@us.sumida.com

Looking for pricing, stock, or lifecycle information?

Click below to explore more details on WIN SOURCE:

- ⊖ [View CDRH8D43RT125NP-220MC on WIN SOURCE](#)
- ⊖ [Sumida America Components Inc. Information](#)

Optimize Your Supply Chain with WIN SOURCE Solutions

- ✓ Global Sourcing Solution
- ✓ Obsolete Management
- ✓ Cost Control Management
- ✓ Shortage Management
- ✓ Alternative Solution
- ✓ Excess Inventory Management