



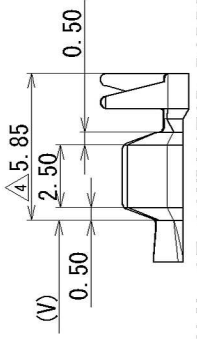
**THE DATASHEET OF
XY-VH3.96-8A11**



TABLE 1 WIRE CRIMP SIZE		PART NO. AND CH. CODE	△ C	△ V	W1	W2	△ H1	△ H2	△ 3 (INSULATION DIAMETER: φ0.91~φ1.90)
S	7116-4415-02, C	ETC.	3.0	1.9	1.49	2.82	1.82	2.84	△ 3 (JASO) 0.3 △ 3 (ISO) 0.22~0.35
M	7116-4416-02, C	△ (7B16-4416-02, C)	3.0	1.9	1.82	2.94	2.20	3.13	△ 3 (JASO) 0.5 △ 3 (ISO) 0.5
L	7116-4417-02, C	ETC.	△ SEE DWG	1.65	△ 1.96	3.10	2.55	3.53	△ 3 (JASO) 0.85 △ 3 (ISO) 0.75

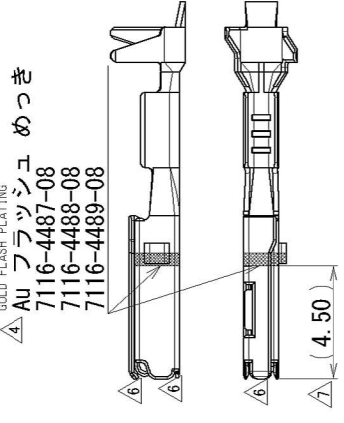
△ 2. DETAIL OF CONDUCTOR BARREL

- △ (7116-4417-02)
- △ (7116-4417-08)
- △ (7116-4489-08)



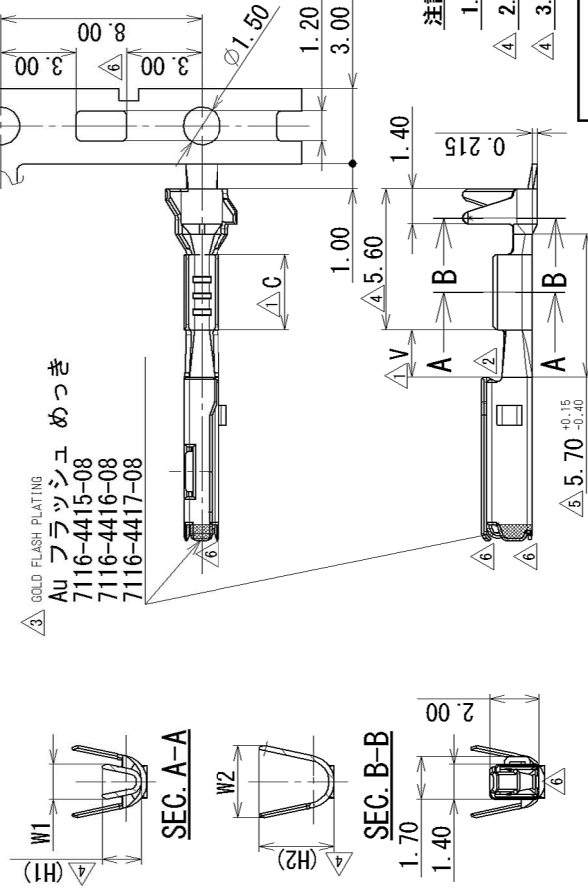
△ 4. GOLD FLASH PLATING

- △ Au フラッシュ めっき
- 7116-4487-08
- 7116-4488-08
- 7116-4489-08



△ 3. GOLD FLASH PLATING

- △ Au フラッシュ めっき
- 7116-4415-08
- 7116-4416-08
- 7116-4417-08



SEC. A-A

SEC. B-B

NOTES

1. MALE TERMINAL PART NO. : 7114-4415-02, -4416-02, -4417-02
2. APPLICABLE WIRE SEAL PART NO. : 7158-3165-90, -3166-60, -3167-80, -3168-80, -3182-20
3. PART NUMBERS IN PARENTHESIS SHALL BE USED FOR AIR BAG(A/B) CIRCUITS AND OTHER CIRCUITS DESIGNATED FOR SPECIAL CONTROL.

注記

1. かん合端子品番 : 7114-4415-02, -4416-02, -4417-02
2. 適用ゴム栓品番 : 7158-3165-90, -3166-60, -3167-80, -3168-80, -3182-20
3. ()内の品番はA/B回路及び特別管理回路に使用すること。

△	2015/11/25	CHANGED DIMENSION	C15-Z542	S, P
△ 6	2006/03/30	CHANGE FORM. ETC., C	C06-Z314	S, K
△ 6	2004/11/22	ADDED TOLERANCE	C04-ZF29	Y, I
△ 4	2003/12/11	ADDED GOLD PLATING ETC., A	C03-X787	H, Y
△ 3	2002/09/23	ADDED PART NO. ETC.	C02-Y003	H, Y
△ 2	2002/06/05	REVISED FORM. ETC., A	C02-X502	T, Y
△ 1	2001/10/30	CHANGED DIMENSION	C01-Y113	H, Y
△ 1	2001/09/04	NEW	C01-X871	H, Y

LET	DATE	REVISION RECORD	NO.	CHKD

GENERAL TOLERANCE			
10 MAX	50 MAX	100 MAX	250 OVR
A ±0.15	±0.2	±0.3	±0.5
B ±0.2	±0.3	±0.55	±0.95
C ±0.3	±0.5	±0.8	±1.4
			±2

GENERAL TOLERANCE			
R5 MAX	R10 MAX	R20 MAX	R20 OVR
±0.2	±0.3	±0.5	±2.5
			±3°
			±3°
			0.15

CUSTOMER	
CUSTOMER PART NO.	CUSTOMER DWG NO.

OFFICE	
OFFICE	TRIAL PART NO.

VENDOR	
VENDOR	VENDOR NO.

APPROVED	
APPROVED	CHECKED

DWG DATE	
DWG DATE	UNIT

DESIGN	
DESIGN	DRAWN

PART NO.	
PART NO.	CH. CODE

DWG NO.	
DWG NO.	SET DRW NO.

DATE	
DATE	DATE

CORPORATION	
CORPORATION	

Looking for pricing, stock, or lifecycle information?

Click below to explore more details on WIN SOURCE:

- ⊖ [View XY-VH3.96-8A11 on WIN SOURCE](#)
- ⊖ [Xiamen Xin Yi Precision Electronics Co., Ltd. Information](#)

Optimize Your Supply Chain with WIN SOURCE Solutions

- ✓ Global Sourcing Solution
- ✓ Obsolete Management
- ✓ Cost Control Management
- ✓ Shortage Management
- ✓ Alternative Solution
- ✓ Excess Inventory Management