

EE-SX3162/3163/3164 and -4162/4163/4164

Connector Type Non-Amplified



Connector type, 5mm slot width, transmissive photomicrosensor with screw mount capability on the X,Y, and Z axes!

OMRON announces the release of new EE-SX3162/3163/3164 and EE-SX4162/4163/4164 Photomicrosensors. This expansion of Omron's optical sensor lineup features the addition of 5 mm slot width connector type photomicrosensors. Easy screw mounting capabilities allow for the installation of this photomicrosensor anywhere inside an application without need for an additional PCB for sensor mounting. Omron now offers this series of photomicrosensors with Photo-IC output type (Dark-on & Light-on), 3 types of mounting styles, and 2 power supply voltages (5V and 12V). For some specific applications, a zener diode can be added on the output of the photomicrosensor to provide greater noise immunity (EE-SX3162-P1-Z and EE-SX4162-P1-Z only).

New Product Introduction



FEATURES and BENEFITS:

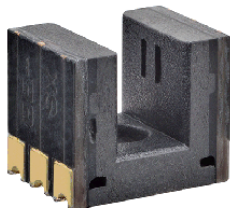
Features	Benefits
Connector type Photomicrosensor now available with 5mm slot width	This New Product Expansion provides more design options to customer
Screw Mounting Capabilities in 3 different mounting styles: Side, L-shaped, and Horizontal	Models available for mounting on X,Y, and Z axes Sensor can be mounted anywhere inside of the application
Connector Type and Screw Mount makes this sensor mountable off of a PCB	Models with connectors eliminate the need for a separate PCB, and an all-in-one structure facilitates downsizing
Two Different Power Supply Voltages Available: 12V and 5V	Design Flexibility

APPLICATIONS:

- Label printer, smart meter, amusement equipment, vending machine, security system, ATM machine

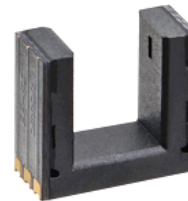
MORE NEW PHOTOMICROSENSORS:

EE-SX1320/-1321/-1330/-4320



2-3mm slot width surface mount, with photo IC and dual channel types

EE-SX1350/-3350/-4350



Reduced size, 5mm slot width with surface mount and photo IC type

Looking for pricing, stock, or lifecycle information?

Click below to explore more details on WIN SOURCE:

 [View EE-SX4163-P1 on WIN SOURCE](#)

 [Omron Information](#)

Optimize Your Supply Chain with WIN SOURCE Solutions

-  Global Sourcing Solution
-  Obsolete Management
-  Cost Control Management
-  Shortage Management
-  Alternative Solution
-  Excess Inventory Management