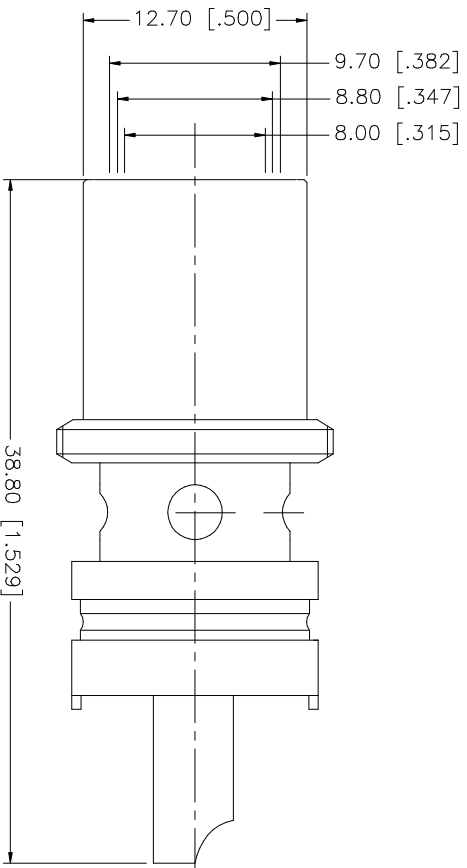
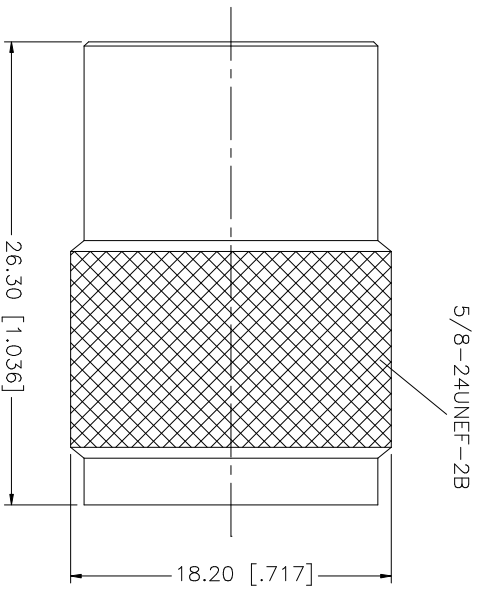
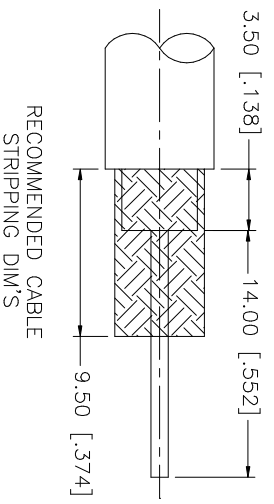




THE DATASHEET OF
182120-10





REV.	DATE	DESCRIPTION
NC	10/03/01	INITIAL RELEASE
A	01/05/06	UPDATE DRAWING FORMAT



NO.	DESCRIPTION	MATERIAL	FINISH	QTY	UNLESS OTHERWISE SPECIFIED DIMENSIONS ARE IN MILLIMETERS. DIMENSIONS IN [] ARE IN INCHES AND FOR CUSTOMER REFERENCE ONLY.	UNLESS OTHERWISE SPECIFIED TOLERANCES FOR MILLIMETERS ARE:	UNLESS OTHERWISE SPECIFIED TOLERANCES FOR INCHES ARE:	APPROVALS	DATE	PART DESCRIPTION	DWG. NO.	REV.	SIZE	SCALE
8						0.5 - 8mm ± 0.20mm	.020 - .315 = ± 0.007"			<h1 style="text-align: center;">Amphenol Connex</h1> <p style="text-align: center;">UHF SOLDER PLUG (RG-8.11/U CABLE) SILVER BODY/ NICKEL COUPLING NUT/ GOLD CONTACT</p>	182120-10.DWG	A	A	N/A
7					8 - 30mm ± 0.40mm	.315 - 1.180 = ± 0.015"								
6					30 - 120mm ± 0.50mm	1.180 - 4.724 = ± 0.020"								
5														
4	COUPLING NUT	BRASS	NICKEL	1										
3	CONTACT PIN	BRASS	GOLD	1										
2	INSULATOR	TEFLON	NATURAL	1										
1	BODY	BRASS	SILVER	1										
	DESCRIPTION													
					DO NOT SCALE DRAWING			CAD FILE						
								C:/182/182120-10.DWG						

Looking for pricing, stock, or lifecycle information?

Click below to explore more details on WIN SOURCE:

-  [View 182120-10 on WIN SOURCE](#)
-  [Amphenol-RF Division Information](#)

Optimize Your Supply Chain with WIN SOURCE Solutions

-  Global Sourcing Solution
-  Obsolete Management
-  Cost Control Management
-  Shortage Management
-  Alternative Solution
-  Excess Inventory Management