

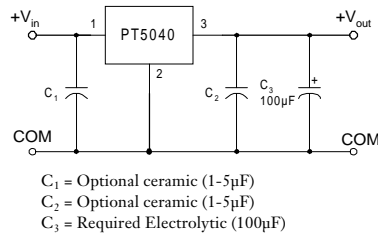
### Features

- Wide Input Voltage Range
- 85% Efficiency
- Internal Over-Temperature Protection
- Laser-trimmed Output Voltage
- Soft Start
- 5-Pin Mount Option (Suffixes L & M)

### Description

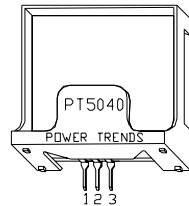
The PT5040 is a series of 3-pin boost-voltage Integrated Switching Regulators (ISRs). These ISRs are designed for use with +5V bus systems that require an additional regulated +8V to +20V with up to 1A of output current. These ISRs are packaged in the 3-pin, single in-line pin (SIP) package configuration.

### Standard Application



### Pin-Out Information

Pin	Function
1	$V_{in}$
2	GND
3	$V_{out}$



### Ordering Information

- PT5041□ = +12 Volts
- PT5042□ = +15 Volts
- PT5044□ = +8 Volts
- PT5045□ = +9 Volts
- PT5046□ = +10 Volts
- PT5047□ = +18 Volts
- PT5048□ = +12.6 Volts
- PT5049□ = +20 Volts

### PT Series Suffix (PT1234x)

Case/Pin Configuration	Order Suffix	Package Code*
Vertical	<b>N</b>	(EAD)
Horizontal	<b>A</b>	(EAA)
SMD	<b>C</b>	(EAC)
Horizontal, 2-pin Tab	<b>M</b>	(EAM)
SMD, 2-Pin Tab	<b>L</b>	(EAL)

\* Previously known as package styles 100/110.  
 (Reference the applicable package code drawing for the dimensions and PC board layout)

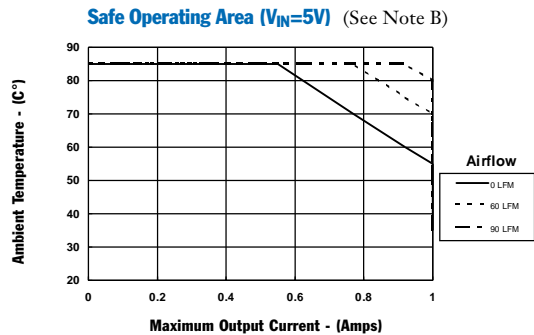
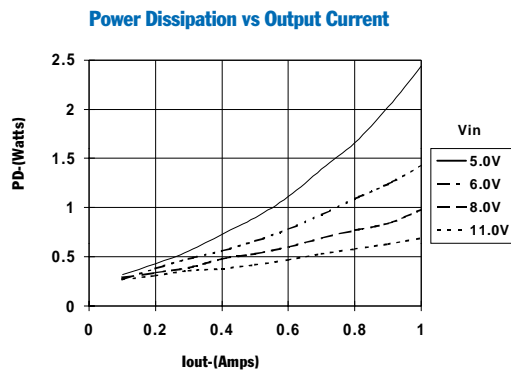
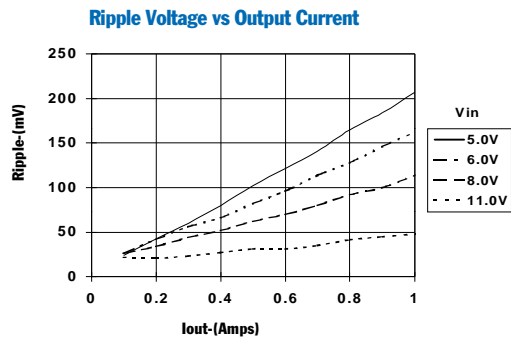
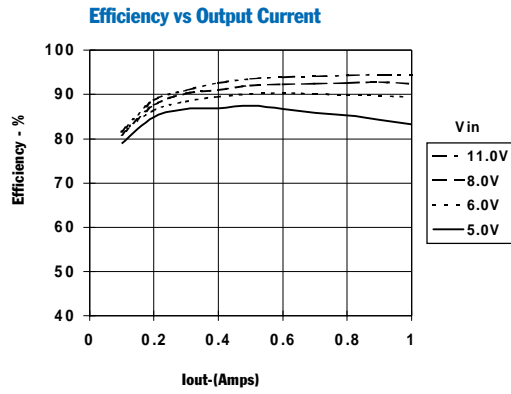
NOTE: Boost Topology ISRs are not Short-Circuit Protected.

### Specifications (Unless otherwise stated, $T_a = 25^\circ\text{C}$ , $V_{in} = 5\text{V}$ , $I_o = I_{o,max}$ , $C_3 = 100\mu\text{F}$ )

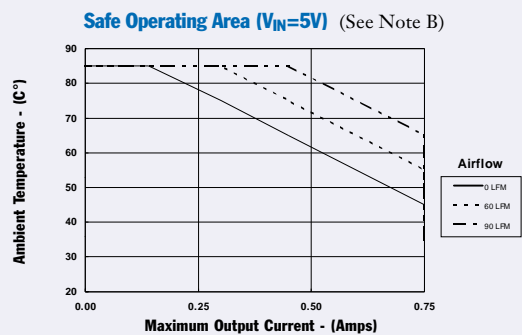
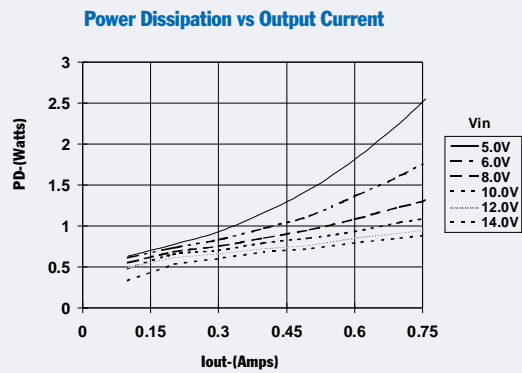
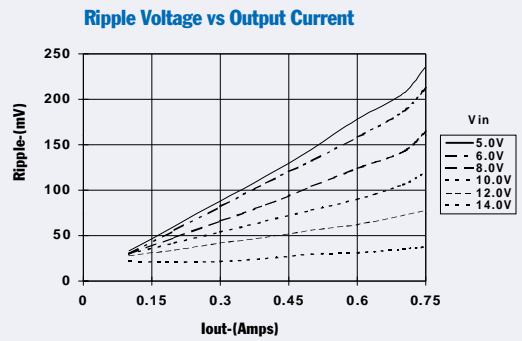
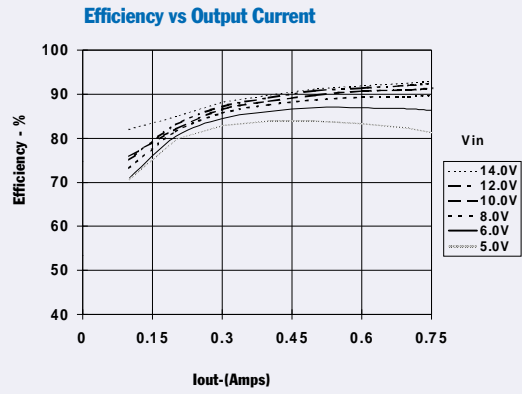
Characteristics	Symbol	Conditions	PT5040 SERIES			Units	
			Min	Typ	Max		
Output Current	$I_o$	Over $V_{in}$ range	PT5049	0.1 (1)	—	0.5	A
			PT5047	0.1 (1)	—	0.6	
			PT5041/48	0.1 (1)	—	1.0	
			PT5042	0.1 (1)	—	0.75	
			PT5044	0.1 (1)	—	1.5	
			PT5045/46	0.1 (1)	—	1.2	
Input Voltage Range	$V_{in}$	Over $I_o$ range	PT5047/5049	4.75	—	$(V_o - 1)$ 14	V
Output Voltage Tolerance	$\Delta V_o$	Over $V_{in}$ Range $T_a = -20^\circ\text{C}$ to SOA derating limit (3)	—	$\pm 1.5$	$\pm 3.0$	$\%V_o$	
Line Regulation	$Reg_{line}$	Over $V_{in}$ range	—	$\pm 0.5$	$\pm 1.0$	$\%V_o$	
Load Regulation	$Reg_{load}$	$I_{o,min} \leq I_o \leq I_{o,max}$	—	$\pm 0.5$	$\pm 1.0$	$\%V_o$	
Efficiency	$\eta$	$I_o = 0.5\text{A}$	—	85	—	%	
$V_o$ Ripple (pk-pk)	$V_r$	20MHz bandwidth	—	$\pm 2$	$\pm 5$	$\%V_o$	
Transient Response	$t_{tr}$ $V_o$	25% load change $V_o$ over/undershoot	—	500	—	$\mu\text{Sec}$	
			—	3.0	5.0	$\%V_o$	
Current Limit	$I_{lim}$	—	—	150 (2)	—	$\%I_{o,max}$	
Inrush Current	$I_{ir}$ $t_{ir}$	On start up	—	5.5 (3)	—	A	
			—	1	—	mSec	
Switching Frequency	$f_s$	Over $V_{in}$ and $I_o$ ranges	$V_o < 15\text{V}$	500	650	800	kHz
			$V_o \geq 15\text{V}$	650	800	950	
Operating Temperature Range	$T_a$	—	-20	—	+85 (4)	$^\circ\text{C}$	
Thermal Resistance	$\theta_{pa}$	Free Air Convection (40-60LFM)	—	40	—	$^\circ\text{C}/\text{W}$	
Storage Temperature	$T_s$	—	-40	—	+125	$^\circ\text{C}$	
Mechanical Shock	—	Per Mil-STD-883D, Method 2002.3 1 msec, Half Sine, mounted to a fixture	—	500	—	G's	
Mechanical Vibration Per Mil-STD-883D, 20-2000 Hz	—	Suffixes N, A, & C Suffixes L & M	—	5	—	G's	
			—	20 (5)	—		
Weight	—	Suffixes N, A, & C Suffixes L & M	—	4.5	—	grams	
			—	6.5	—		

- Notes:**
- (1) The ISR will operate at no load with reduced specifications.
  - (2) Boost topology ISRs are not short circuit protected.
  - (3) The inrush current stated is above the normal input current for the associated output load.
  - (4) See Safe Operating Area curves or consult the factory for the appropriate derating
  - (5) The tab pins on the 5-pin mount package types (suffixes L & M) must be soldered. For more information see the applicable package outline drawing.

**PT5041, +12.0 VDC** (See Note A)



**PT5042, +15.0 VDC** (See Note A)



**Note A:** Characteristic data has been developed from actual products tested at 25°C. This data is considered typical data for the Converter.  
**Note B:** Thermal derating graphs are developed in free-air convection cooling, which corresponds to approximately 40–60LFM of airflow.

## IMPORTANT NOTICE

Texas Instruments Incorporated and its subsidiaries (TI) reserve the right to make corrections, modifications, enhancements, improvements, and other changes to its products and services at any time and to discontinue any product or service without notice. Customers should obtain the latest relevant information before placing orders and should verify that such information is current and complete. All products are sold subject to TI's terms and conditions of sale supplied at the time of order acknowledgment.

TI warrants performance of its hardware products to the specifications applicable at the time of sale in accordance with TI's standard warranty. Testing and other quality control techniques are used to the extent TI deems necessary to support this warranty. Except where mandated by government requirements, testing of all parameters of each product is not necessarily performed.

TI assumes no liability for applications assistance or customer product design. Customers are responsible for their products and applications using TI components. To minimize the risks associated with customer products and applications, customers should provide adequate design and operating safeguards.

TI does not warrant or represent that any license, either express or implied, is granted under any TI patent right, copyright, mask work right, or other TI intellectual property right relating to any combination, machine, or process in which TI products or services are used. Information published by TI regarding third-party products or services does not constitute a license from TI to use such products or services or a warranty or endorsement thereof. Use of such information may require a license from a third party under the patents or other intellectual property of the third party, or a license from TI under the patents or other intellectual property of TI.

Reproduction of information in TI data books or data sheets is permissible only if reproduction is without alteration and is accompanied by all associated warranties, conditions, limitations, and notices. Reproduction of this information with alteration is an unfair and deceptive business practice. TI is not responsible or liable for such altered documentation.

Resale of TI products or services with statements different from or beyond the parameters stated by TI for that product or service voids all express and any implied warranties for the associated TI product or service and is an unfair and deceptive business practice. TI is not responsible or liable for any such statements.

### Mailing Address:

Texas Instruments  
Post Office Box 655303  
Dallas, Texas 75265

## Looking for pricing, stock, or lifecycle information?

Click below to explore more details on WIN SOURCE:

 [View PT5045A on WIN SOURCE](#)

 [Texas Instruments](#) Information

## Optimize Your Supply Chain with WIN SOURCE Solutions

-  Global Sourcing Solution
-  Obsolete Management
-  Cost Control Management
-  Shortage Management
-  Alternative Solution
-  Excess Inventory Management