



**THE DATASHEET OF
MPT-08-01-01-L-RA-SD**

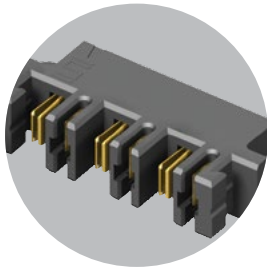


HIGH POWER SYSTEMS

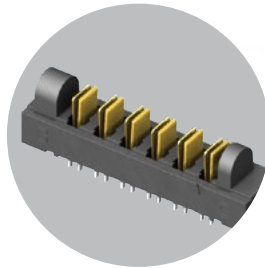
20-60 A
per blade

FEATURES & BENEFITS

- Current Rating: 23 A - 58.7 A per power blade
- 3.81 mm, 5.00 mm and 6.35 mm pitch
- Dual blade contact system
- Power only or power/signal combinations available
- Right-angle and vertical orientations
- Rugged screw down and locking clip options
- Discrete wire cable assemblies with 10-16 AWG wire (see pages 246-248)
- "Hinged" for unique mating in any orientation from 0° to 90° and space confined applications



Hermaphroditic options
samtec.com?MPPT and
samtec.com?UPPT



Hinging options available
samtec.com?FMPT and
samtec.com?FMPS

CREEPAGE & CLEARANCE

| SERIES | CREEPAGE | CLEARANCE |
|-------------------|----------|-----------|
| UPT/UPS/UPPT | 5.50 mm | 1.51 mm |
| MPT/MPS/MPTC/MPSC | 2.95 mm | 2.71 mm |
| PET/PES/PETC/PESC | 3.66 mm | 3.31 mm |

Selectively loading contacts achieves customer specific creepage and clearance requirements.

KEY SPECIFICATIONS

| SERIES | PITCH | INSULATOR MATERIAL | CONTACT MATERIAL | PLATING | OPERATING TEMP RANGE | CURRENT RATING | VOLTAGE RATING | LEAD-FREE SOLDERABLE |
|-----------|--|--------------------|--|-------------------------------------|--|--|--------------------------------|----------------------|
| UPT/UPS | (3.81 mm) .150" | Black LCP | BeCu | Sn or Au over 50 μ" (1.27 μm) Ni | -55 °C to +105 °C (Sn) -55 °C to +125 °C (Au) | 23 A (1 pin powered) | 438 VAC | Yes |
| UPPT | (3.81 mm) .150" | Black LCP | Copper Alloy | Sn or Au over 50 μ" (1.27 μm) Ni | -55 °C to +105 °C (Sn) -55 °C to +125 °C (Au) | 21.4 A (1 pin powered) | 425 VAC | Yes |
| MPT/MPS | (5.00 mm) .1969" | Black LCP | Copper Alloy | Sn or Au over 50 μ" (1.27 μm) Ni | -55 °C to +105 °C (Sn) -55 °C to +125 °C (Au) | 28.8 A (1 pin powered) | 575 VAC | Yes |
| MPTC/MPSC | (5.00 mm) .197" (pwr) (2.00 mm) .079" (sig) | Black LCP | Signal: Phosphor Bronze Terminal: Copper Alloy | Sn or Au over 50 μ" (1.27 μm) Ni | -55 °C to +105 °C (Sn) -55 °C to +125 °C (Au) | 28.8 A (pwr - 1 pin powered) 5 A (sig - 4 pins powered) | 250 VAC | Yes |
| PET/PES | (6.35 mm) .250" | Black LCP | Copper Alloy | Sn or Au over 50 μ" (1.27 μm) Ni | -55 °C to +105 °C (Sn) -55 °C to +125 °C (Au) | 58.7 A (1 pin powered) | 450 VAC | Yes |
| PETC/PESC | (6.35 mm) .250" (pwr) (2.54 mm) .100" (sig) | Black LCP | Copper Alloy | Sn or Au over 50 μ" (1.27 μm) Ni | -55 °C to +105 °C (Sn) -55 °C to +125 °C (Au) | 31.4 A (pwr - 1 pin powered) 5.7 A (sig - 4 pins powered) | 650 VAC (pwr) 450 VAC (sig) | Yes |

(5.00 mm) .1969" PITCH • 30 A DUAL BLADE/LEAF SYSTEMS

| SERIES | POWER PINS | LEAD STYLE | TAIL LENGTH | PLATING OPTION | TAIL |
|-----------------|-------------------------------|--|--|---|--|
| MPT Terminal | -02, -03, -04, -06, -08 | -6.30 = (6.30 mm) 0.248" (MPT only) | -01 = Use with (1.60 mm) .062" Thick PCB -03 = Use with (2.36 mm) .093" Thick PCB | -L = 10 μ" (0.25 μm) Gold on contact, Matte Tin on tail -T = Matte Tin | (Required Callout) -V = Vertical |
| MPS Socket | | -7.70 = (7.70 mm) 0.303" (MPS only) | | | |

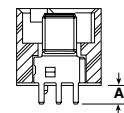
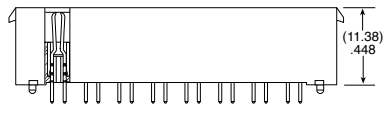
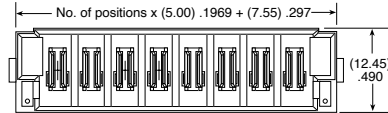
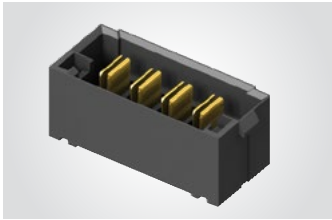
MPT

Board Mates:

MPS

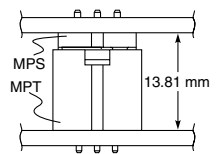
Cable Mates:

MPSS



| TAIL LENGTH | A |
|-------------|-------------|
| -01 | (2.72) .107 |
| -03 | (3.51) .138 |

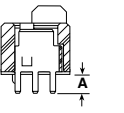
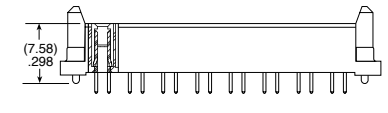
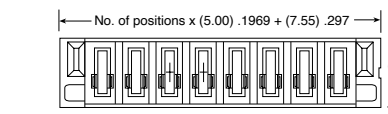
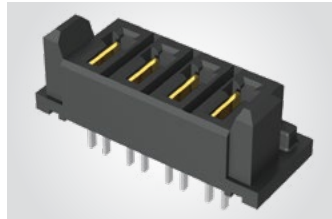
MATED HEIGHT



MPS

Board Mates:

MPT



| TAIL LENGTH | A |
|-------------|-------------|
| -01 | (2.72) .107 |
| -03 | (3.52) .139 |

View complete specifications at: samtec.com?MPT & samtec.com?MPS

| SERIES | POWER PINS | 01 | TAIL LENGTH | PLATING OPTION | RA | SD |
|-----------------|-----------------------|----|--|--|----|----|
| MPT Terminal | -02, -04, -06, -08 | | -01 = Use with (1.60 mm) .062" Thick PCB -03 = Use with (2.36 mm) .093" Thick PCB | -L = 10 μ" (0.25 μm) Gold on contact, Matte Tin on tail -T = Matte Tin | | |
| MPS Socket | | | | | | |

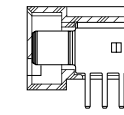
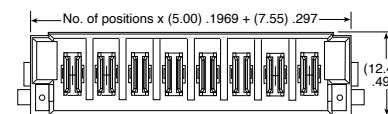
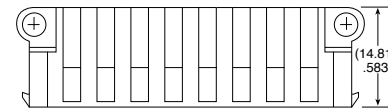
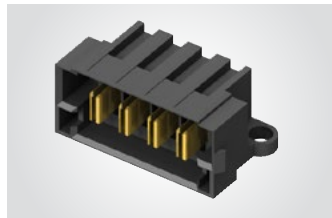
MPT-RA

Board Mates:

MPS

Cable Mates:

MPSS

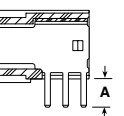
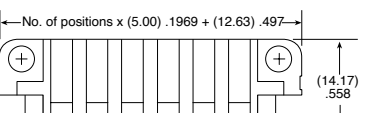
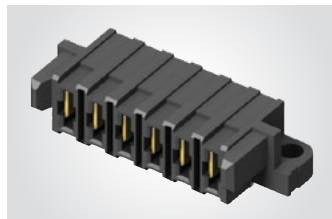


| TAIL LENGTH | A |
|-------------|-------------|
| -01 | (2.72) .107 |
| -03 | (3.51) .138 |

MPS-RA

Board Mates:

MPT





| TAIL LENGTH | A |
|-------------|-------------|
| -01 | (2.72) .107 |
| -03 | (3.52) .139 |

Note:
Some lengths, styles and options are non-standard, non-returnable

View complete specifications at: samtec.com?MPT & samtec.com?MPS

Looking for pricing, stock, or lifecycle information?

Click below to explore more details on WIN SOURCE:

-  [View MPT-08-01-01-L-RA-SD on WIN SOURCE](#)
-  [Samtec Inc. Information](#)

Optimize Your Supply Chain with WIN SOURCE Solutions

-  Global Sourcing Solution
-  Obsolete Management
-  Cost Control Management
-  Shortage Management
-  Alternative Solution
-  Excess Inventory Management