



THE DATASHEET OF
570-260-001





WATERPROOF CONNECTORS

EDAC



Waterproof D-Sub Connectors

The EDAC D-Seal series of IP67 rated waterproof D-Subminiature connectors are available in both standard and high density packages. Plug & receptacles in 9, 15, 25, 26 and 44 pin versions are available as well as high power combo configurations. Vertical and right angle footprints, with a variety of termination styles, contact plating thicknesses, and mounting options are available. A solid performer in ruggedized applications and harsh environments.

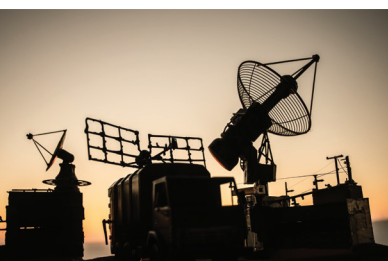
Features

- Standard and high density plug and receptacles in 9, 15, 25, 26 and 44 contact pin sizes
- Signal along with high power contacts up to 40 amps combined in one connector
- Plug shell indents provide grounding and additional mating retention
- Mounting options for panel mount or connector mating include threaded inserts and threaded standoffs
- Epoxy sealed by special process providing zero ingress, no wicking up leads and a smooth molded finish with no air bubbles. Combined with solid O-ring seal to panel
- Degree of Protection: IP67 as per IEC60529



EDAC

www.edac.net



Waterproof D-Sub Connectors

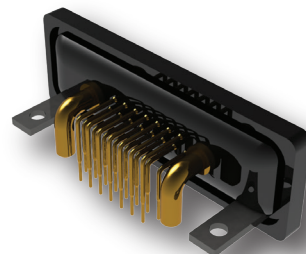
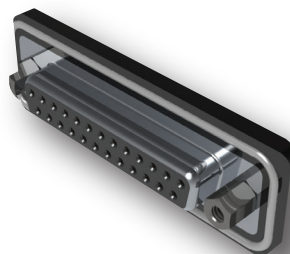
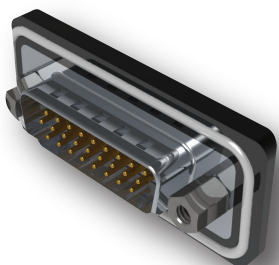
| Series | No. of Contacts | Plating Options | No. of Contact Codes & Density | Ins. Color Options | Shell Plating Options | Flange Mtg. Options |
|-----------|-----------------|-----------------|--------------------------------|--------------------|-----------------------|---------------------|
| M/F | | | | | | |
| 627W/628W | 9-25 | Flash-30u" gold | 4 Std. | 1 | 1 | 3 |
| 629W/630W | 9-25 | Flash-30u" gold | 4 Std | 1 | 1 | 3 |
| 633W/634W | 15-44 | Flash-30u" gold | 3 High | 1 | 1 | 1 |
| 637W/638W | 15-44 | Flash- | 3 High | 1 | 1 | 1 |

Widest range of options available to meet all design requirements

Superior IP67 Waterproof solution that withstands harsh environments

Waterproof Power Combo D-Sub Connectors

| Series | No. of Contacts | Plating Options | No. of Contact Codes & Density | Ins. Color Options | Shell Plating Options | Flange Mtg. Options |
|-------------|-----------------|-----------------|--------------------------------|--------------------|-----------------------|---------------------|
| M/F | Power / Signal | | | | | |
| 627WC/628WC | 1-5 / 0-20 | Flash-30u" gold | 12 Std. | 1 | 2 | 4 |
| 629WC/630WC | 1-5 / 0-20 | Flash-30u" gold | 12 Std. | 1 | 2 | 6 |



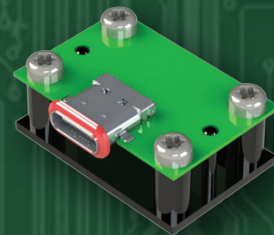


Waterproof USB Connectors

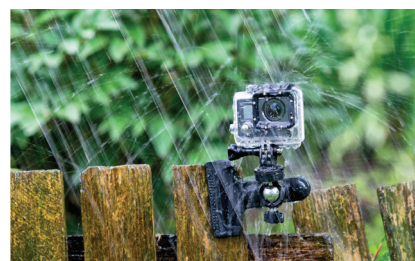
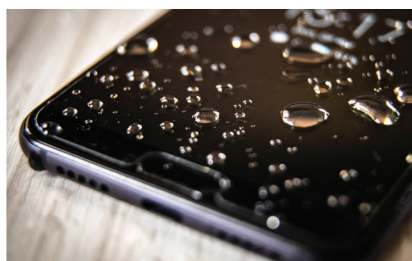
Waterproof panel mount USB connectors Type A and B standard and micro are available offering IP67 grade protection. Quarter turn twist and lock bayonet style system offers easy mating and ultra secure connections. IP67 Waterproof board mount USB connectors feature full epoxy sealing of the contacts and an O-ring seal to the panel.

Features

- Standard USB Type A, Micro USB, Mini USB & bayonet style are available
- 1.2Mbps or 480Mbps communication speeds
- 480Mbps communication speed compatible with USB 2.0 standard
- Compatible with asynchronous and isochronous data transfer methods
- Silicone rubber seals for tight seal to panel
- Bayonet locking system for safe mating under severe vibration or shock conditions
- Micro USB board mount and type C available with all rated IP 67



www.edac.net



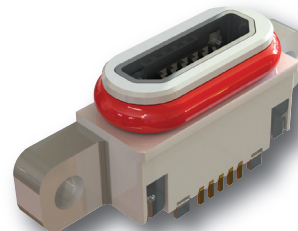
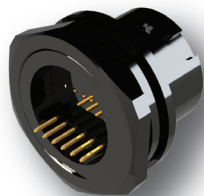
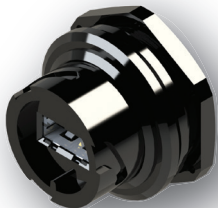


Waterproof USB Connectors

| Series | No. of Contacts | Plating | Contact Codes | Ins. Color | Type |
|--------|-----------------|--------------|----------------|------------|------------------|
| 690W | 4-5 | Flash - 30u" | RA & Cable End | PBT/LCP | A 2.0/Mini/Micro |

Solid waterproof connection with superior shock & vibration resistance.

Built to withstand the most harsh environments.



For More Information
www.edac.net



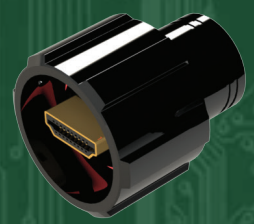


Waterproof HDMI Connectors

E-seal waterproof HDMI connectors follow industry standards and are available with a quarter turn, twist and lock, bayonet locking system offering easy mating and an ultra secure connection. Fully sealed on the back end with an O-ring seal to the panel insures no water ingress. These IP67 rated connectors are fully submersible and deliver high speed video transmissions resulting in very high resolution images.

Features

- Plating options from gold flash to 30u" gold plating
- Quarter turn, twist and lock, bayonet style locking mechanism
- Silicone rubber seals and fully potted terminals
- Hot pluggable
- Synchronous or asynchronous high speed data transmissions



www.edac.net    



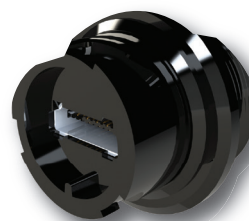
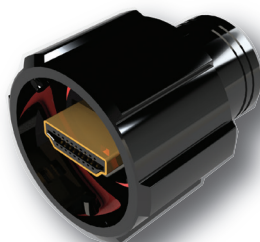
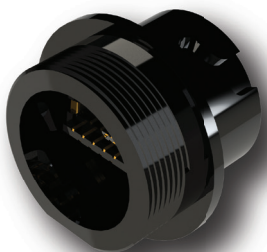


Waterproof HDMI Connectors

| Series | No. of Contacts | Plating Options | Contact Codes | Ins. Material | Type |
|--------|-----------------|-----------------|---------------|---------------|------|
| 694W | 38 | Flash-30u" | Cable End | LCP | A |

Premium IP67 connector with secure locking mechanism

IP67 waterproof connection with superior shock & vibration resistance!



EDAC

For More Information
www.edac.net



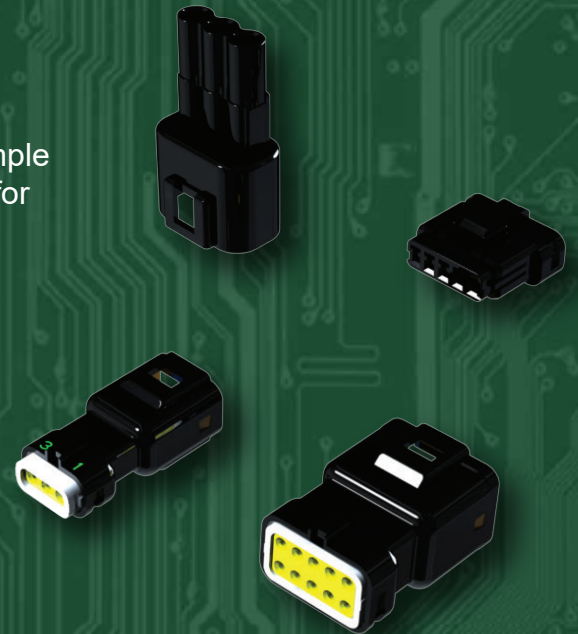


Waterproof Wire to Wire & Wire to Board

The EDAC E-Inline family of waterproof plug and socket connectors provides a reliable interconnect solution in harsh environments. Single or double latch insulator designs insure superior shock and vibration resistance. A variety of styles are available for different wire gauge applications. These utilize simple crimp and poke contacts. Optional contact plugs are available for use when all contact positions are not required. Additional contacts/wires can then be added in the field.

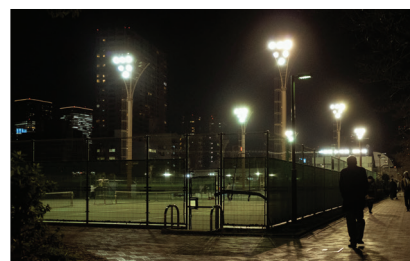
Features

- Rated current from 3 to 10 Amps for use with wire sizes from 28 to 14 AWG
- 560 and 572 series offer double latch solution
- Available in wire-to-wire and wire-to-board options
- True crimp and poke solution
- Internal polarization to prevent mismatching
- Available with wire already installed
- Waterproof grade IP52 and IP67 certified



EDAC

www.edac.net

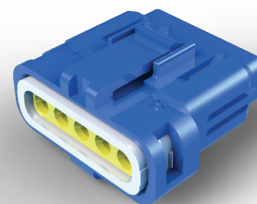
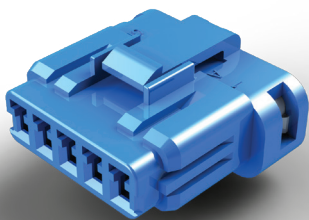


Waterproof Wire to Wire & Wire to Board Connectors

| Series | No. of Contacts | Pitch | Current Rating | Latch Type | Polarized | Pre-Installed Seals | WP Grade |
|--------|------------------|---------------|----------------|------------|-----------|---------------------|----------|
| 560 | 2, 3 and 5 | 2.5mm | 3 amps | Double | Y | Y | IP67 |
| 565 | 2, 3 and 5 | 2.5mm | 3 amps | Single | Y | Y | IP67 |
| 566 | 2, 3, 4 and 6 | 2.0mm | 2 amps | Single | Y | Y | IP67 |
| 567 | 2, 3, 4, 6 and 9 | 5.0mm X 5.9mm | 8 amps | Single | Y | N | IP52 |
| 568 | 1 | N/A | 12 amps | Single | Y | N | IP52 |
| 570 | 1, 2 and 3 | 5.8mm | 10 amps | Single | Y | N | IP67 |
| 572 | 1, 2 and 3 | 5.8mm | 10 amps | Double | Y | N | IP67 |

Premium Waterproof wire to wire or wire to board solution

Optional Port Plugs allow circuits to be added in the field



Tel: +1 416 754 3322
customerservice@edac.net

Established in 1966, EDAC soon became a world leader in providing connectors for Card Edge and Rack & Panel applications. Since then, we have expanded our product offering to include one of the widest ranges of interconnect solutions in the world. Products include D-Sub, Modular Jacks RJ45, USB, HDMI, Inline Plug & Socket, Headers, Waterproof Connectors and Custom Solutions. Our dedicated teams of engineering, customer service, field support, and global distribution partners allow EDAC the opportunity to support many unique applications globally.

www.edac.net    

Connect with Us . . . Experience Makes the Difference

Looking for pricing, stock, or lifecycle information?

Click below to explore more details on WIN SOURCE:

 [View 570-260-001 on WIN SOURCE](#)

 [EDAC Inc. Information](#)

Optimize Your Supply Chain with WIN SOURCE Solutions

-  Global Sourcing Solution
-  Obsolete Management
-  Cost Control Management
-  Shortage Management
-  Alternative Solution
-  Excess Inventory Management