



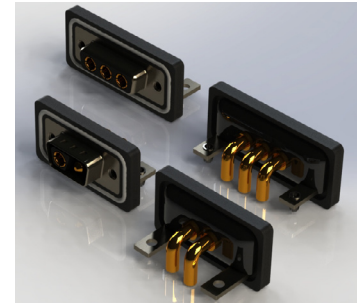
# 629WC/630WC SERIES



## Waterproof D-Sub Connectors: Power Combo, Right Angle

### Features:

- Signal, along with power contacts within one connector
- Space saving on the PCB and I/O designs
- Available in various pin out configurations
- Pin and socket contact mating design with P.C. tail termination
- Metal shell provides EMI/RFI shielding, plug shell indents provide grounding and additional mating retention
- Mounting options include threaded hole with #4-40UNC or M3, with or without boardlocks
- D-shaped connector mating outline provides polarization
- IP Rating: IP67



### Specifications:

	Power Only	Combination
Insulator Material	PBT+30% GF, UL 94V-0, Color: Black	
Contact Material	Copper Alloy	
Contact Plating	Selective Gold (See Ordering Code) over Nickel	
Shell Material and Plating	Steel with Ni or Tin Plating	
Sealing compound	Epoxy	
O-ring Material	Silicone	
Current Rating (Power Contacts)	10 amps, 20 amps, 30 amps, 40 amps	
Current Rating (Signal Contacts)		5 amps
Voltage Rating	125 V	
Contact Resistance (Power Contacts)	1 Milliohms maximum	
Contact Resistance (Signal Contacts)		10 Milliohms maximum
Insulation Resistance	5000 megaohms minimum	
Dielectric Withstanding Voltage	1000 V AC rms at Sea Level	
Operating Temperature	-25°C To +85°C	
Mating Cycle	500 For 30 Microinches Gold Plating, 50 For Gold Flash Plating	
IP Rating	IP67	

### Ordering Code:

**629W2W2-240-1N2**

SERIES: \_\_\_\_\_  
 629: PLUG (PIN)  
 630: RECEPTACLE (SOCKET)

CONNECTOR TYPE: \_\_\_\_\_  
 W - WATERPROOF

LAYOUT: \_\_\_\_\_

	POWER ONLY		COMBINATION			
SIZE 9 CONTACT SHELL	2W2	2WK2	5W1			
SIZE 15 CONTACT SHELL	3W3	3WK3	7W2	11W1		
SIZE 25 CONTACT SHELL	5W5		9W4	13W3	17W2	21W1

8W8 TOTAL NO. OF POWER CONTACT  
 2WK2 MALE FEMALE COMBINATION  
 TOTAL NO. OF CONTACT

CONTACT PLATING THICKNESS: \_\_\_\_\_  
 2 - GOLD FLASH PLATING  
 1 - 5 MICROINCHES OF GOLD PLATING  
 3 - 15 MICROINCHES OF GOLD PLATING  
 6 - 30 MICROINCHES OF GOLD PLATING

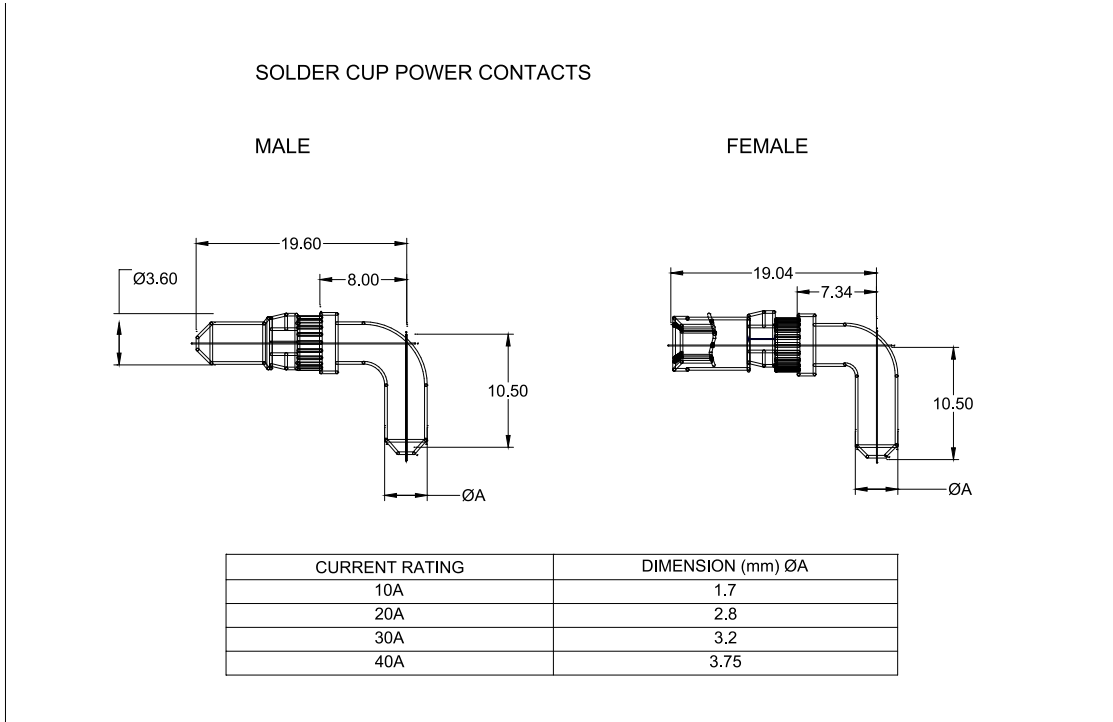
TAIL TYPE: \_\_\_\_\_  
 40 - PC TAIL

MOUNTING OPTIONS:  
 2 - #4-40 UNC THREADED RIVET  
 3 - #4-40 UNC THREADED RIVET WITH BRACKET & BOARDLOCKS  
 4 - #4-40 UNC THREADED RIVET WITH BRACKET  
 A - M3 THREADED RIVET  
 B - M3 THREADED RIVET WITH BRACKET & BOARDLOCKS  
 C - M3 THREADED RIVET WITH BRACKET

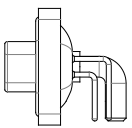
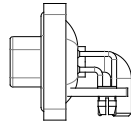
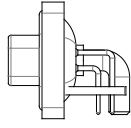
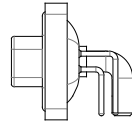
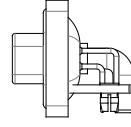
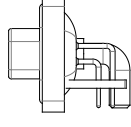
SHELL PLATING:  
 N - NICKEL  
 T - TIN

CURRENT RATING:  
 1 - 10A  
 2 - 20A  
 3 - 30A  
 4 - 40A

### R/A PCB Power Contacts:



### Mounting Options:

<p>#4-40 UNC THREADED RIVIT</p>  <p>CODE: 2</p>	<p>#4-40 UNC THREADED RIVIT WITH BRACKET &amp; BOARDLOCKS</p>  <p>CODE: 3</p>	<p>#4-40 UNC THREADED RIVIT WITH BRACKET</p>  <p>CODE: 4</p>
<p>M3 THREADED RIVIT</p>  <p>CODE: A</p>	<p>M3 THREADED RIVIT WITH BRACKET &amp; BOARDLOCKS</p>  <p>CODE: B</p>	<p>M3 THREADED RIVIT WITH BRACKET</p>  <p>CODE: C</p>

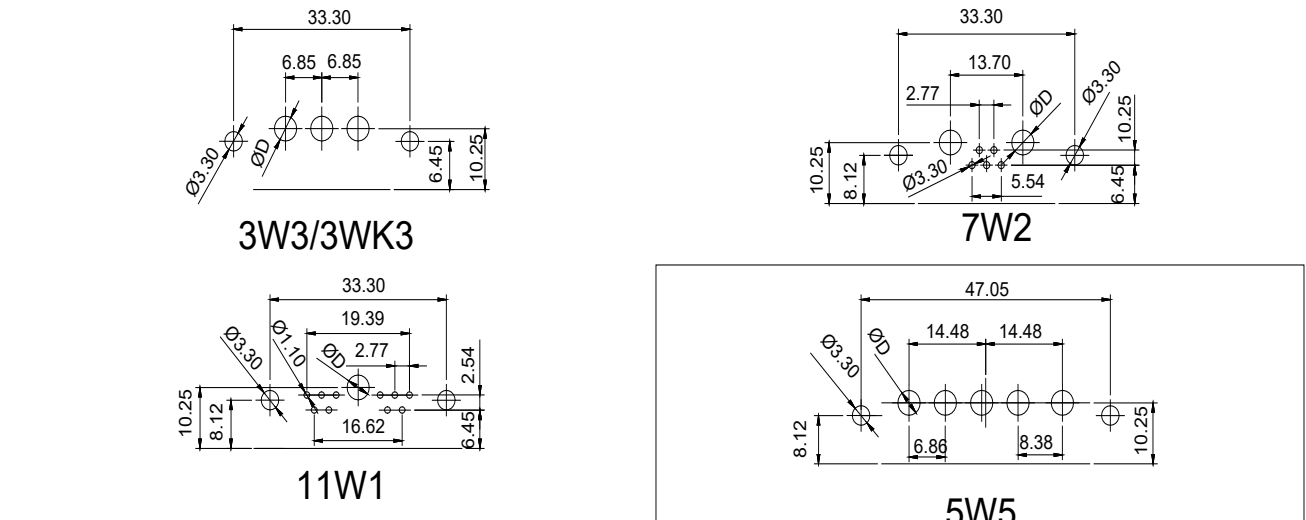
### WATERPROOF POWER COMBO D-SUB

#### RIGHT ANGLE PCB SOLDER LAYOUT

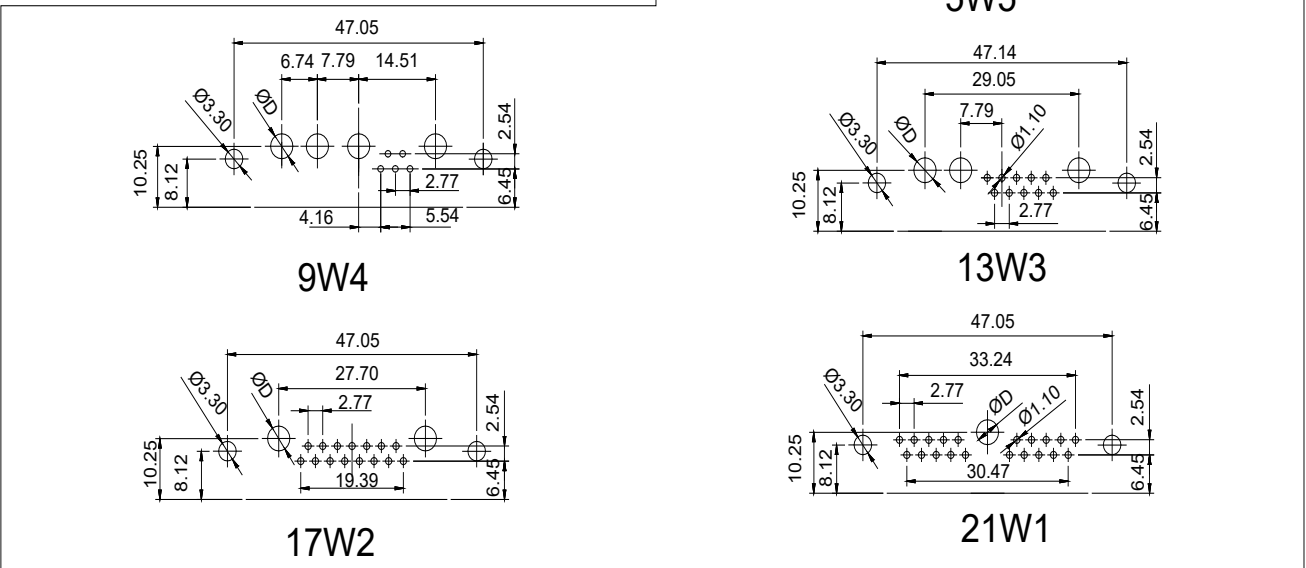
SHELL SIZE 1(E)



SHELL SIZE 2(A)



SHELL SIZE 3(B)



Current Rating	10A	20A	30A	40A
D(mm)	2.2	3.3	3.7	4.2

## Looking for pricing, stock, or lifecycle information?

Click below to explore more details on WIN SOURCE:

 [View 629W3WK3140-3N2 on WIN SOURCE](#)

 [EDAC Inc. Information](#)

## Optimize Your Supply Chain with WIN SOURCE Solutions

-  Global Sourcing Solution
-  Obsolete Management
-  Cost Control Management
-  Shortage Management
-  Alternative Solution
-  Excess Inventory Management