



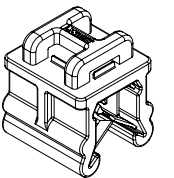
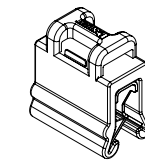
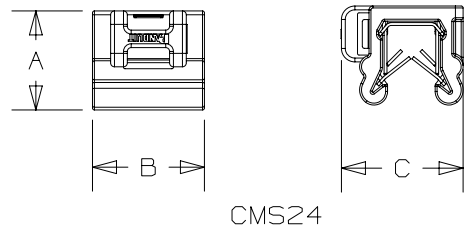
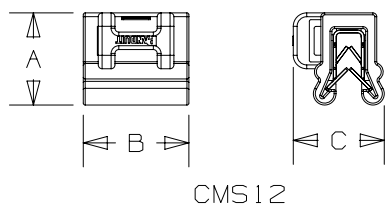
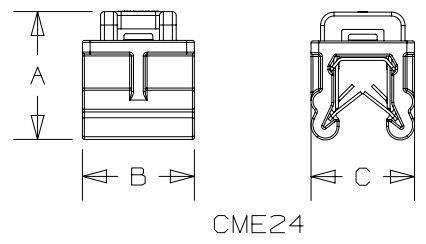
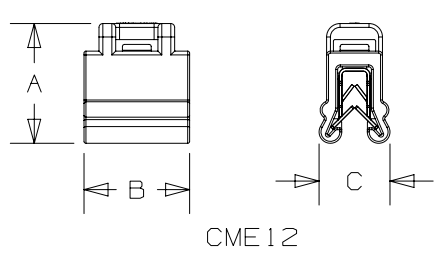
**THE DATASHEET OF
CMS12-M300**



PART NUMBER	PANEL THICKNESS	USED WITH CABLE TIES	DIMENSIONS - IN (mm)			WEIGHT g/100 PIECES
			A	B	C	
CME12-M300	.028-.118 (.7mm-3mm)	M, I, S	.62 (15.7mm)	.55 (14.0mm)	.37 (9.4mm)	150
CMS12-M300			.48 (12.2mm)	.55 (14.0mm)	.47 (11.9mm)	140
CME24-M300	.118-.236 (3mm-6mm)		.67 (17.0mm)	.58 (14.7mm)	.54 (13.7mm)	199
CMS24-M300			.52 (13.2mm)	.58 (14.7mm)	.63 (16.0)	189

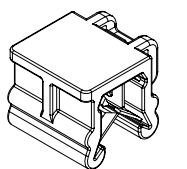
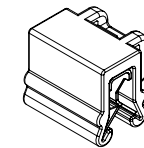
NOTES:

- MATERIAL:
 - EDGE CLIP (-300)
 - MOLDED BODY: HEAT STABILIZED WEATHER RESISTANT NYLON 6.6
 - METAL CLIP: STEEL, ZINC PLATED.
- NO INSTALLATION TOOL IS NEEDED TO AFFIX THE EDGE CLIP TO PANEL EDGE; USE PANDUIT GTS-E OR EQUIVALENT TOOL FOR TENSION AND CUT OF THE CABLE TIE.



CME12

CME24



CMS12

CMS24



REV	DATE	BY	CHK	APR	DESCRIPTION	ECN
00	7/13/20	JHNU	MDS	RMHI	DRAWING RELEASED	084624

TITLE EDGE CLIP (SEE PART NUMBERS IN TABLE) CUSTOMER DRAWING	
ITEM REVISION NAME 01688NCE/00	PANDUIT
DATASET FILE NAME 01688NCE-DC/00	
MATERIAL: SEE NOTES	
DRAWING NUMBER: 01688NCE-DC	
UNLESS OTHERWISE SPECIFIED, DIMENSIONAL TOLERANCES ARE: IN [mm]	
.X ± .1 [2.54] .XXX ± .005 [.127]	
.XX ± .01 [.25] ANGLES ± 5 °	
THIRD ANGLE PROJECTION	
DRAWN BY JHNU	DATE 7/13/20
CHK MDS	SCALE FULL
SHT 1 OF 1	
SIZE B	

D10100DB/17

Looking for pricing, stock, or lifecycle information?

Click below to explore more details on WIN SOURCE:

-  [View CMS12-M300 on WIN SOURCE](#)
-  [Panduit Corp Information](#)

Optimize Your Supply Chain with WIN SOURCE Solutions

-  Global Sourcing Solution
-  Obsolete Management
-  Cost Control Management
-  Shortage Management
-  Alternative Solution
-  Excess Inventory Management