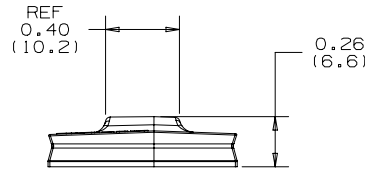
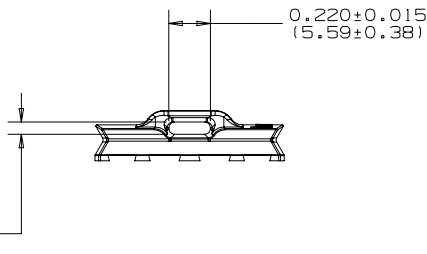
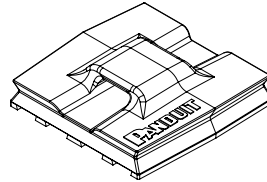
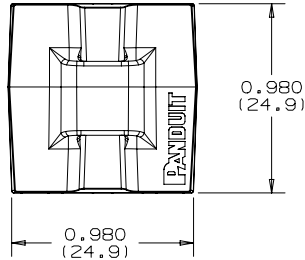




# THE DATASHEET OF FCM2-A-C14



THIS COPY IS PROVIDED ON A RESTRICTED BASIS AND IS NOT TO BE USED IN ANY WAY DETRIMENTAL TO THE INTERESTS OF PANDUIT CORP.



PANDUIT PART NUMBER	COLOR	USE WITH THESE CABLE TIE ** CROSS-SECTIONS	WEIGHT LBS/100 pcs. (g)
EMS-A	NATURAL	M, I, S	0.55 (250)
EMS-A-0	WEATHER RESISTANT BLACK	M, I, S	0.55 (250)

NOTES:

- DESIGNED FOR USE WITH EPOXY ADHESIVE (ADHESIVE NOT INCLUDED WITH EMS-A)
- MOUNTING INSTRUCTIONS:  
 (A) APPLY ADHESIVE TO PART.  
 (B) APPLY SUFFICIENT PRESSURE TO FORCE ADHESIVE INTO GROOVES.  
 (C) ALLOW ADHESIVE TO CURE BEFORE APPLYING LOAD TO MOUNT.
- FOR PACKAGE SIZE SEE PART NUMBER SUFFIX DESIGNATION ON CURRENT PRICE SHEET.
- CABLE TIE CROSS-SECTION CODE:  
 M=MINIATURE, I=INTERMEDIATE, S=STANDARD.
- BAG MAY CONTAIN EXTRA PIECES TO COMPENSATE FOR VARIANCE IN THE PACKAGING PROCESS. PANDUIT ASSURES MINIMUM PIECE COUNT AS STATED ON THE BAG.



REV	DATE	BY	CHK	APR	DESCRIPTION	ECN
03	1/18/2021	RVU	JADE	RMHI	ADDED NOTE 5.	GAECN05860
02C	2/28/18	RVU	DJW	JHAC	CHANGE FROM .057 +/--.005 TO .060 +/--.010 [1.52 +/--.25].	GAECN04510
01B	12/15/09	GDH			DIM 0.220 ± 0.015 WAS: 0.210 ± 0.015, DIM 0.057 ± 0.015 WAS .065±0.015/-0.010	GB0239HZ
01A	3/20/09	TMSA			REVISED DRAWING TO TEAMCENTER NAMING CONVENTION AND ADDED MASTER MODEL TO DRAWING	GB0239HZ

TITLE <b>EMS-A EPOXY MOUNT, STANDARD</b> CUSTOMER DRAWING					
ITEM REVISION NAME <b>G03597FH/03</b>				<b>PANDUIT</b>	
DATASET FILE NAME <b>G03597FH_DC_GB0239HZ/03D</b>					
UNLESS OTHERWISE SPECIFIED, DIMENSIONAL TOLERANCES ARE: IN [mm] .x ± 0.05 [1.3]      .xxx ± 0.010 [0.25] .xx ± 0.02 [0.5]      ANGLES ± 5 °					
DRAWN BY <b>TMSA</b>				DATE <b>3/20/09</b>	
CHK <b>JHAC</b>		SCALE <b>1:1</b>		DRAWING NUMBER: <b>SHT 1 OF 1</b>	
THIRD ANGLE PROJECTION					
SIZE <b>A</b>					

D10100DA/20

## Looking for pricing, stock, or lifecycle information?

Click below to explore more details on WIN SOURCE:

 [View FCM2-A-C14 on WIN SOURCE](#)

 [Panduit Corp Information](#)

## Optimize Your Supply Chain with WIN SOURCE Solutions

-  Global Sourcing Solution
-  Obsolete Management
-  Cost Control Management
-  Shortage Management
-  Alternative Solution
-  Excess Inventory Management