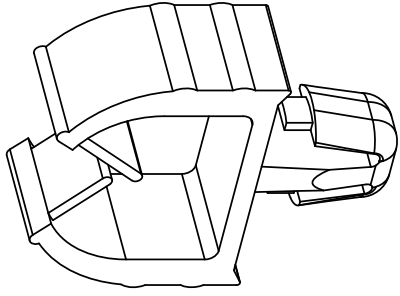


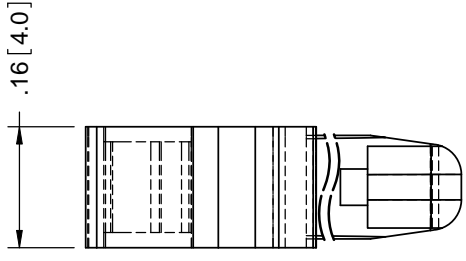
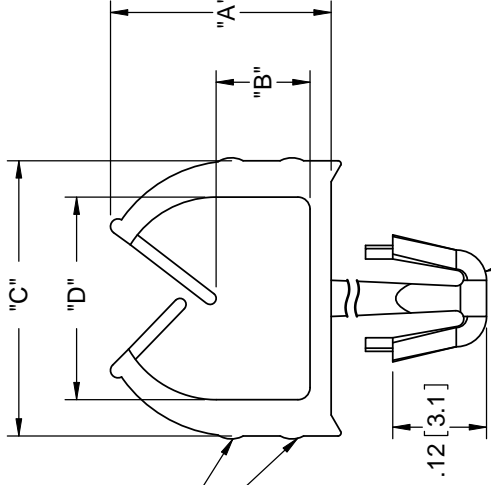


**THE DATASHEET OF  
MWSEA2-1-1-19**





\*SLIGHT PROTRUSIONS  
MAY APPEAR ON PARTS



TO SNAP-LOCK IN A .138±.002  
[3.5± 0.05] HOLE DIA. IN A  
PANEL THICKNESS INDICATED

NYLON 6/6 (RMS-01) COLOR: NATURAL PART NO.	FLAME RETARDANT NYLON 6/6 (RMS-19) COLOR: NATURAL PART NO.	"A" REF.	"B" REF.	"C" REF.
*MWSEA2-1-01	*MWSEA2-1-19	.29 [7.3]	.12 [3.0]	.36
MWSEA2-2-01	MWSEA2-2-19	.36 [9.1]	.16 [3.9]	.42 [
MWSEA2-3-01	MWSEA2-3-19	.44 [11.2]	.24 [6.0]	.47 [
MWSEA2-4-01	MWSEA2-4-19	.51 [13.0]	.30 [7.7]	.47 [
*MWSEA2-1-1-01	*MWSEA2-1-1-19	.29 [7.3]	.12 [3.0]	.36
MWSEA2-1-2-01	MWSEA2-1-2-19	.36 [9.1]	.16 [3.9]	.42 [
MWSEA2-1-3-01	MWSEA2-1-3-19	.44 [11.2]	.24 [6.0]	.47 [
MWSEA2-1-4-01	MWSEA2-1-4-19	.51 [13.0]	.30 [7.7]	.47 [

F	SEE CO.200190 FOR CHANGES	S.K.	05/22/08
E	COMPLETELY REDRAWN, SEE ECN #709	SM	10.06.03
D	UPDATED TABLE AND ADDED .093 [2.36] PANEL THK	SM	05.01.02
C	P/N FOR RMS-19 ADDED TO TABLE	J.L.	08.08.00
B	FR-NYLON (RMS-19) ADDED	J.L.	09.22.98
A	DIM .16 [4.0] WAS .17 [4.3]	J.L.	03.06.98
REV.	DESCRIPTION	ENGR.	DATE

TITLE:

## MICRO WIRE SADDLE

CREATED BY: SOLIDWORKS	FILE #:	MWSEA2	DWN:	SM	APP:	-
TOLERANCES UNLESS NOTED .XX±.010 .XXX±.005 FRAC ±1/64 ANG ±1°	SHEET:	1 OF 1	SHEET SIZE:	A	DT:	10/02/03
	RE:	RICHCO, INC.		RICHCO, INC. ENG@RICHCO-INC.COM (773) 539-4060		

## Looking for pricing, stock, or lifecycle information?

Click below to explore more details on WIN SOURCE:

- ⊖ [View MWSEA2-1-1-19](#) on WIN SOURCE
- ⊖ [Essentra Components](#) Information

## Optimize Your Supply Chain with WIN SOURCE Solutions

- ✓ Global Sourcing Solution
- ✓ Obsolete Management
- ✓ Cost Control Management
- ✓ Shortage Management
- ✓ Alternative Solution
- ✓ Excess Inventory Management