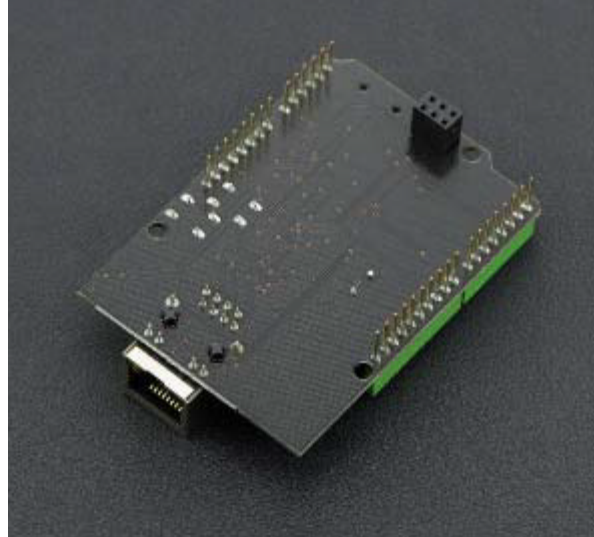




# THE DATASHEET OF DFR0125





## **DFRduino Ethernet Shield V2.1 (Support Mega and Micro SD)**

SKU:DFR0125

### *INTRODUCTION*

The DFRduino Ethernet Shield V2.1 is now released. This version of Ethernet Shield is not only compatible with Mega 1280 and 2560, but also provides a Micro SD card slot for reading/writing.

DFRduino Ethernet Shield V2.1 is fully compatible with Arduino Ethernet Shield. With the official ethernet library, you can do exactly the same thing as the original one, but at a more affordable price.

This Ethernet Shield provides an Arduino controller board with internet access. It is based on the Wiznet W5100 ethernet chip. The Wiznet W5100 provides a network (IP) stack capable of both TCP and UDP. It supports up to four simultaneous socket connections. You can use the Ethernet library to write sketches which connect to the internet using the shield.

You can connect the Ethernet Shield to an Arduino board using long wire-wrap headers which extend through the shield. This keeps the pin layout intact and allows another shield to be stacked on top.

Arduino uses digital pins 10, 11, 12, and 13 (SPI) to communicate with the W5100 on the ethernet shield. These pins cannot be used for general i/o.

The shield provides a standard RJ45 ethernet jack.

The reset button on the shield resets both the W5100 and the Arduino board.

The shield contains a number of informational LEDs:

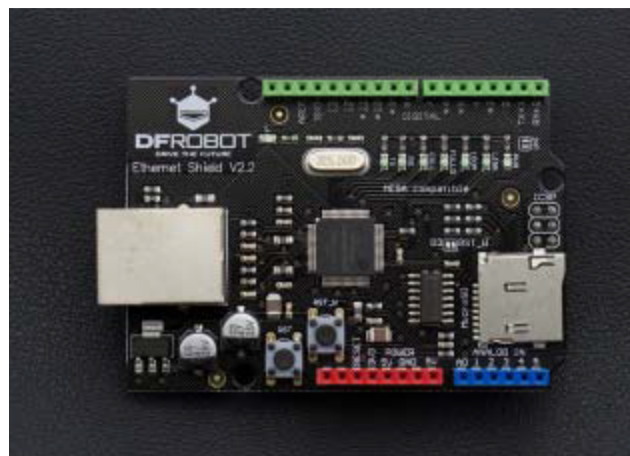
- PWR: indicates that the board and shield are powered
- LINK: indicates the presence of a network link and flashes when the shield transmits or receives data
- FULLD: indicates that the network connection is full duplex
- 100M: indicates the presence of a 100 Mb/s network connection (as opposed to 10 Mb/s)
- RX: flashes when the shield receives data
- TX: flashes when the shield sends data
- COLL: flashes when network collisions are detected

#### Compatibility

- Arduino Mega 1280/2560
- Arduino UNO
- Arduino Duminove

## *SHIPPING LIST*

- DFRduino Ethernet Shield x1



<https://www.dfrobot.com/product-455.html> 8-8-18

## Looking for pricing, stock, or lifecycle information?

Click below to explore more details on WIN SOURCE:

 [View DFR0125 on WIN SOURCE](#)

 [DFRobot Information](#)

## Optimize Your Supply Chain with WIN SOURCE Solutions

-  Global Sourcing Solution
-  Obsolete Management
-  Cost Control Management
-  Shortage Management
-  Alternative Solution
-  Excess Inventory Management