



**THE DATASHEET OF  
SE-CS30-26**



# ZSCT SERIES

## Current Transformer



### Description

The ZSCT series is a current transformer used with Littelfuse relays to detect low levels of earth-leakage current.

### Accessories



#### CBLTP

Twisted-pair wire for connection to CT.  
Order in desired length in meters.

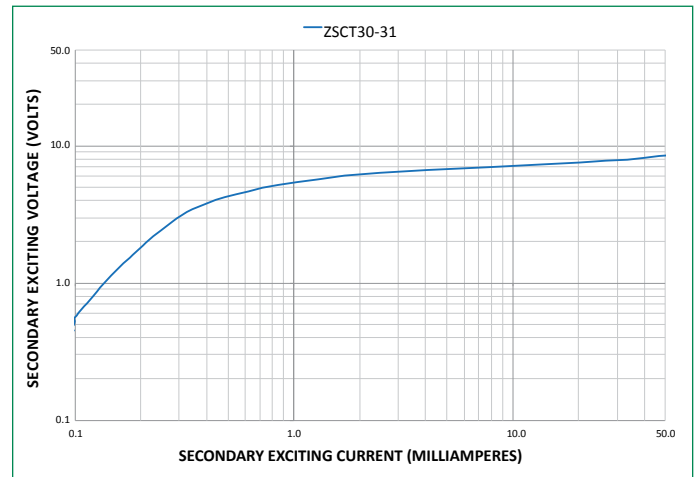
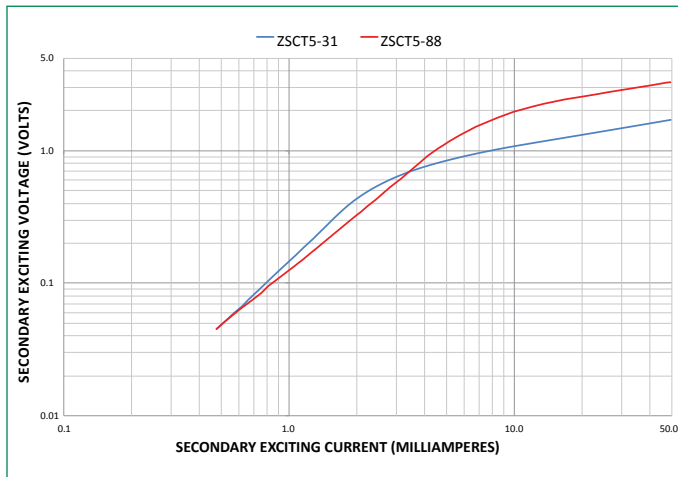
### Specifications

|                              |   |
|------------------------------|---|
| <b>Current Rating</b>        | <b>ZSCT5:</b> 5:0.05 A<br><b>ZSCT30:</b> 30:0.05A         |
| <b>Accuracy</b>              | <b>ZSCT5:</b> 3% @ 0.01 VA<br><b>ZSCT30:</b> 3% @ 0.06 VA |
| <b>Frequency</b>             | 50 to 400 Hz  |
| <b>Insulation Level</b>      | 600V  |
| <b>Operating Temperature</b> | -40 to 55° C (-40 to 131° F)                              |
| <b>Application</b>           | MP8000  |
| <b>Wire Gauge</b>            | 0.05-3.3mm <sup>2</sup> (12-30 AWG)                       |
| <b>Tightening Torque</b>     | 0.5 N-m   |
| <b>Certification</b>         | UL, cUL, CE   |
| <b>Compliance</b>            | RoHS, IEC 61869-2, ANSI/IEEE C57.13                       |

### Ordering Information

| ORDERING NUMBER | TURNS RATIO | WINDOW SIZE, ID | WEIGHT             |
|-----------------|-------------|-----------------|--------------------|
| ZSCT5-31        | 100:1       | 31mm (1.22 in)  | 117.9 g (0.26 lbs) |
| ZSCT5-88        | 100:1       | 88mm (3.46 in)  | 499.0 g (1.10 lbs) |
| ZSCT30-31       | 600:1       | 31mm (1.22 in)  | 113.4 g (0.25 lbs) |

Note: One frequency response may be extended for specific product families

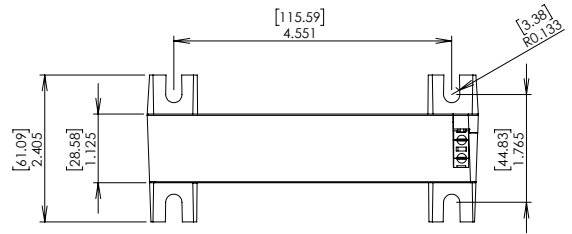
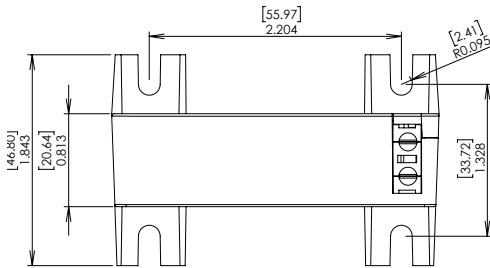


# ZSCT SERIES

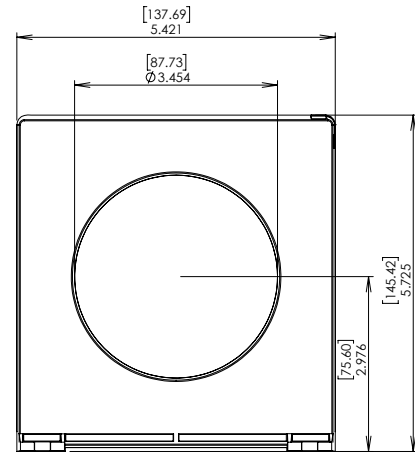
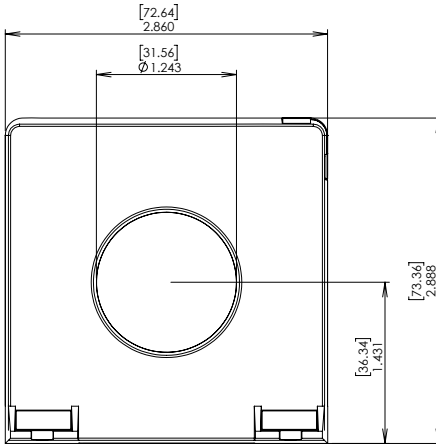
## Dimensions and Mounting Diagram Inches [millimeters]

Mount the ZSCT5-31 and ZSCT30-31 using M5 or #10 screws.

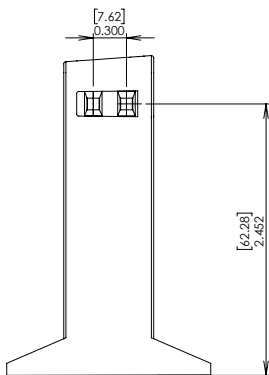
Mount the ZSCT5-88 using M6 or ¼" screws.



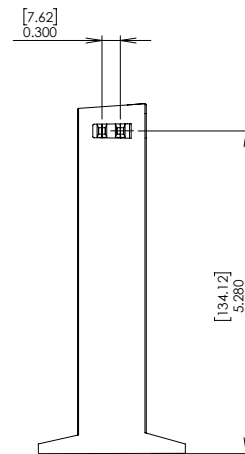
**TOP VIEW AND MOUNTING DETAIL**



**FRONT VIEW**



**ZSCT5-31 and ZSCT30-31**




**ZSCT5-88**

**SIDE VIEW**

**Disclaimer Notice** – Information furnished is believed to be accurate and reliable. However, users should independently evaluate the suitability of and test each product selected for their own applications. Littelfuse products are not designed for, and may not be used in, all applications. Read complete Disclaimer Notice at [www.littelfuse.com/product-disclaimer](http://www.littelfuse.com/product-disclaimer).

## Looking for pricing, stock, or lifecycle information?

Click below to explore more details on WIN SOURCE:

 [View SE-CS30-26 on WIN SOURCE](#)

 [Littelfuse Inc. Information](#)

## Optimize Your Supply Chain with WIN SOURCE Solutions

-  Global Sourcing Solution
-  Obsolete Management
-  Cost Control Management
-  Shortage Management
-  Alternative Solution
-  Excess Inventory Management