



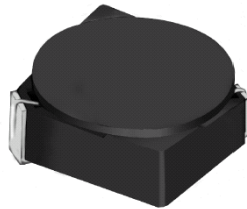
THE DATASHEET OF CDRH3D16/LDNP-150NC



SMD Power Inductor CDRH3D16/LD



Halogen Free



Description

- Ferrite drum core construction.
- Magnetically shielded.
- L × W × H: 4.0 × 4.0 × 1.8 mm Max.
- Product weight: 80mg (Ref.)
- Moisture Sensitivity Level: 1
- RoHS compliance.
- Halogen Free available.

Environmental Data

- Operating temperature range: -40°C~+105°C (including coil's self temperature rise)
- Storage temperature range: -40°C~+105°C
- Solder reflow temperature: 260 °C peak.

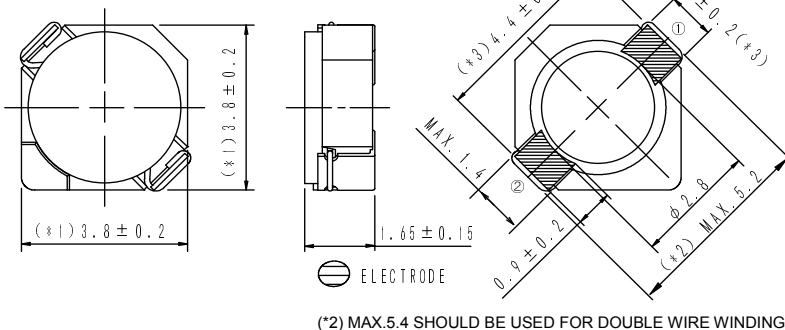
Packaging

- Carrier tape and reel packaging
- 7.0" diameter reel
- 1000pcs per reel

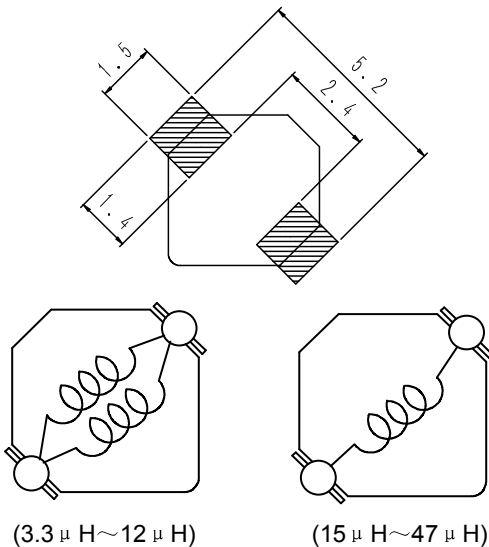
Applications

- Ideally used in Mobile phone, PDA, MP3, DSC/DVC, Portable DVD, etc as DC-DC converter inductors.

Dimension - [mm]



Land pattern and Schematics - [mm]



SMD Power Inductor

CDRH3D16/LD



Electrical Characteristics

Part Name	Stamp	Inductance (μ H) [within] ※1	D.C.R. (m Ω) Max. (Typ.) (at 20°C)	Saturation Current (A) ※2		Temperature Rise Current (A) ※3
				at 20°C	at 100°C	
CDRH3D16/LDNP-3R3NC	A	3.3 \pm 30%	66(53)	0.80	0.52	2.00
CDRH3D16/LDNP-3R9NC	B	3.9 \pm 30%	81(65)	0.75	0.44	1.75
CDRH3D16/LDNP-4R7NC	C	4.7 \pm 30%	91(73)	0.68	0.43	1.72
CDRH3D16/LDNP-5R6NC	D	5.6 \pm 30%	102(82)	0.62	0.38	1.64
CDRH3D16/LDNP-6R8NC	E	6.8 \pm 30%	130(104)	0.58	0.34	1.30
CDRH3D16/LDNP-8R2NC	F	8.2 \pm 30%	140(112)	0.51	0.32	1.28
CDRH3D16/LDNP-100NC	G	10 \pm 30%	190(152)	0.46	0.27	1.07
CDRH3D16/LDNP-120NC	H	12 \pm 30%	205(164)	0.42	0.26	0.98
CDRH3D16/LDNP-150NC	J	15 \pm 30%	272(218)	0.38	0.23	0.87
CDRH3D16/LDNP-180NC	K	18 \pm 30%	327(262)	0.34	0.21	0.76
CDRH3D16/LDNP-220NC	L	22 \pm 30%	356(285)	0.31	0.18	0.66
CDRH3D16/LDNP-270NC	M	27 \pm 30%	470(377)	0.28	0.17	0.60
CDRH3D16/LDNP-330NC	N	33 \pm 30%	560(446)	0.26	0.16	0.55
CDRH3D16/LDNP-390NC	P	39 \pm 30%	700(558)	0.24	0.15	0.47
CDRH3D16/LDNP-470NC	Q	47 \pm 30%	775(630)	0.21	0.13	0.45

※1. Inductance measuring condition: at 100kHz.

※2. Saturation current: The DC current at which the inductance decreases to 65% of its nominal value.

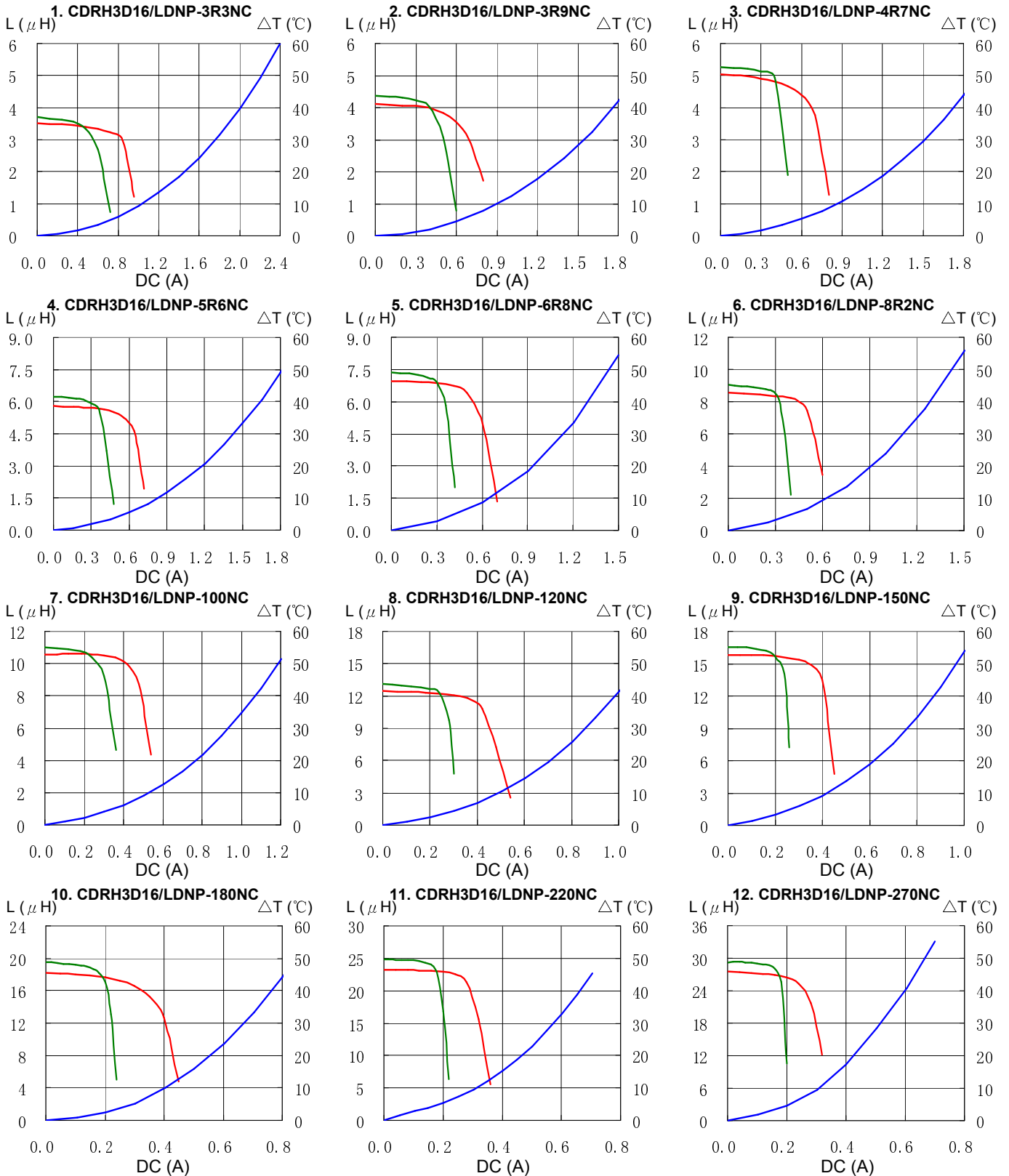
※3. Temperature rise current: The DC current at which the temperature rise is $\Delta t=40^{\circ}\text{C}$. ($T_a=20^{\circ}\text{C}$)

SMD Power Inductor CDRH3D16/LD



Saturation Current & Temperature Rise Graph

— L (20°C) — L (105°C) — ΔT

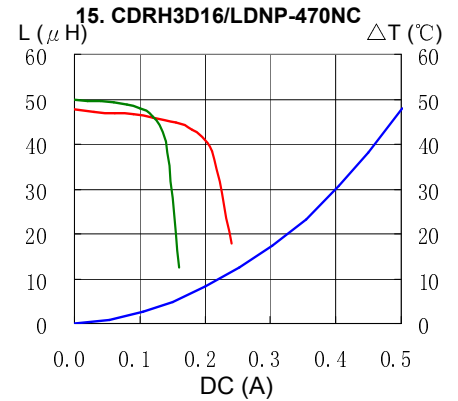
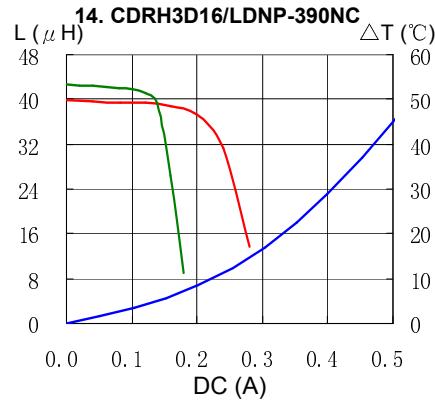
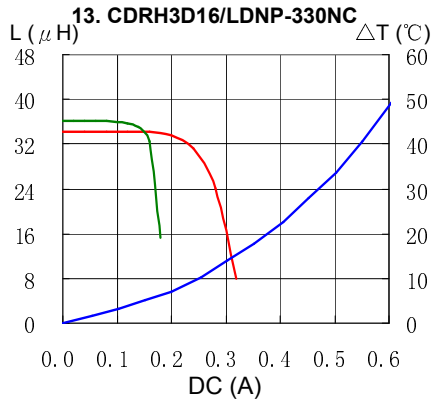


SMD Power Inductor CDRH3D16/LD

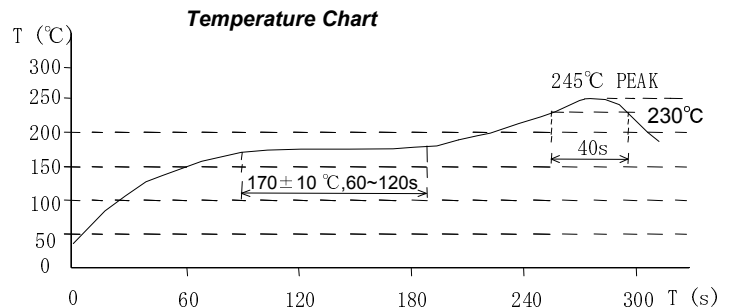
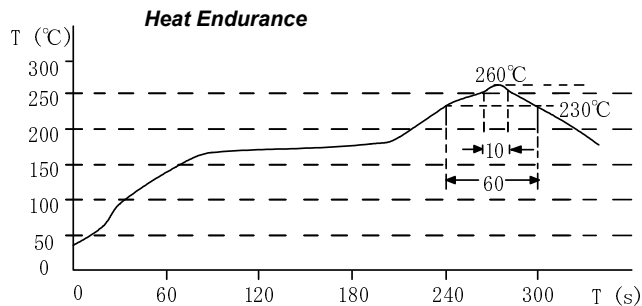


Saturation Current & Temperature Rise Graph

— L (20°C) — L (105°C) — ΔT



Solder Reflow Condition



Please refer to the sales offices on our website - <http://www.sumida.com>

Hong Kong
Tel.+852-2880-6781
FAX.+852-2565-9600
sales@hk.sumida.com

Saitama(Japan)
Tel.+81-48-691-7300
FAX.+81-48-691-7340
sales@jp.sumida.com

Chicago
Tel.+1-847-545-6700
FAX. +1-847-545-6720
sales@us.sumida.com

Shanghai
Tel.+86-21-5836-3299
FAX.+86-21-5836-3266
shanghai.sales@cn.sumida.com

Seoul
Tel.+82-2-6237-0777
FAX.+82-2-6237-0778
sales@kr.sumida.com

Oberzell
Tel.+49-8591-937-0
FAX. +49-8591-937-103
contact@eu.sumida.com

Shenzhen
Tel.+86-755-8291-0228
FAX.+86-755-8291-0338
shenzhen.sales@cn.sumida.com

Singapore
Tel.+65-6296-3388
FAX.+65-6841-4426
sales@sg.sumida.com

Neumarkt
Tel.+49-9181-4509-110
FAX. +49-9181-4509-310
infocomp@eu.sumida.com

Taipei
Tel.+886-2-8751-2737
FAX.+886-2-8751-2738
sales@tw.sumida.com

San Jose
Tel.+1-408-321-9660
FAX.+1-408-321-9308
sales@us.sumida.com

Looking for pricing, stock, or lifecycle information?

Click below to explore more details on WIN SOURCE:

- ⊖ [View CDRH3D16/LDNP-150NC on WIN SOURCE](#)
- ⊖ [Sumida America Components Inc. Information](#)

Optimize Your Supply Chain with WIN SOURCE Solutions

- ✓ Global Sourcing Solution
- ✓ Obsolete Management
- ✓ Cost Control Management
- ✓ Shortage Management
- ✓ Alternative Solution
- ✓ Excess Inventory Management