



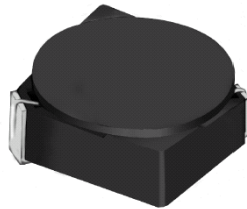
THE DATASHEET OF CDRH3D16NP-220NC



SMD Power Inductor CDRH3D16



Halogen Free



Description

- Ferrite drum core construction.
- Magnetically shielded.
- L × W × H: 4.0 × 4.0 × 1.8 mm Max.
- Product weight: 80mg (Ref.)
- Moisture Sensitivity Level: 1
- RoHS compliance.
- Halogen Free available.

Environmental Data

- Operating temperature range: -40°C~+100°C (including coil's self temperature rise)
- Storage temperature range: -40°C~+100°C
- Solder reflow temperature: 260 °C peak.

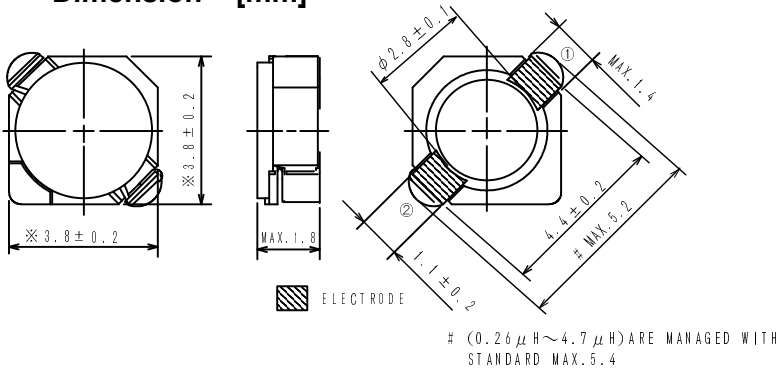
Packaging

- Carrier tape and reel packaging
- 7.0" diameter reel
- 1000pcs per reel

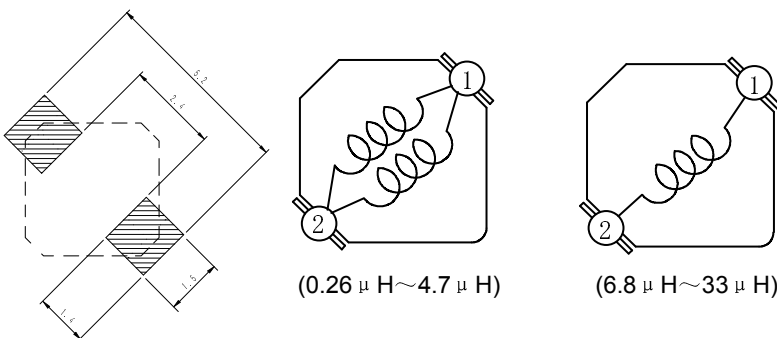
Applications

- Ideally used in Mobile phone, PDA, MP3, DSC/DVC, Portable DVD, etc as DC-DC converter inductors.

Dimension - [mm]



Land pattern and Schematics - [mm]



SMD Power Inductor CDRH3D16



Electrical Characteristics

| Part Name | Stamp | Inductance (μ H) [within] ※1 | D.C.R. (m Ω) Max. (Typ.) (at 20°C) | Rated Current (A) ※2 |
|------------------|-------|---|--|-------------------------|
| CDRH3D16NP-R26NC | R | 0.26 \pm 35% | 27.5(21) | 3.60 |
| CDRH3D16NP-R47NC | S | 0.47 \pm 35% | 35(27) | 2.75 |
| CDRH3D16NP-0R7NC | T | 0.7 \pm 35% | 43(33) | 2.25 |
| CDRH3D16NP-1R1NC | U | 1.1 \pm 35% | 50(38) | 1.90 |
| CDRH3D16NP-1R5NC | A | 1.5 \pm 30% | 52(40) | 1.55 |
| CDRH3D16NP-2R2NC | C | 2.2 \pm 30% | 72(55) | 1.20 |
| CDRH3D16NP-3R3NC | E | 3.3 \pm 30% | 85(65) | 1.10 |
| CDRH3D16NP-4R7NC | G | 4.7 \pm 30% | 105(80) | 0.90 |
| CDRH3D16NP-6R8NC | I | 6.8 \pm 30% | 170(130) | 0.73 |
| CDRH3D16NP-100NC | K | 10 \pm 30% | 210(160) | 0.55 |
| CDRH3D16NP-150NC | M | 15 \pm 30% | 295(225) | 0.45 |
| CDRH3D16NP-220NC | O | 22 \pm 30% | 430(330) | 0.40 |
| CDRH3D16NP-330NC | Q | 33 \pm 30% | 675(520) | 0.32 |

※1. Inductance measuring condition: at 100kHz.

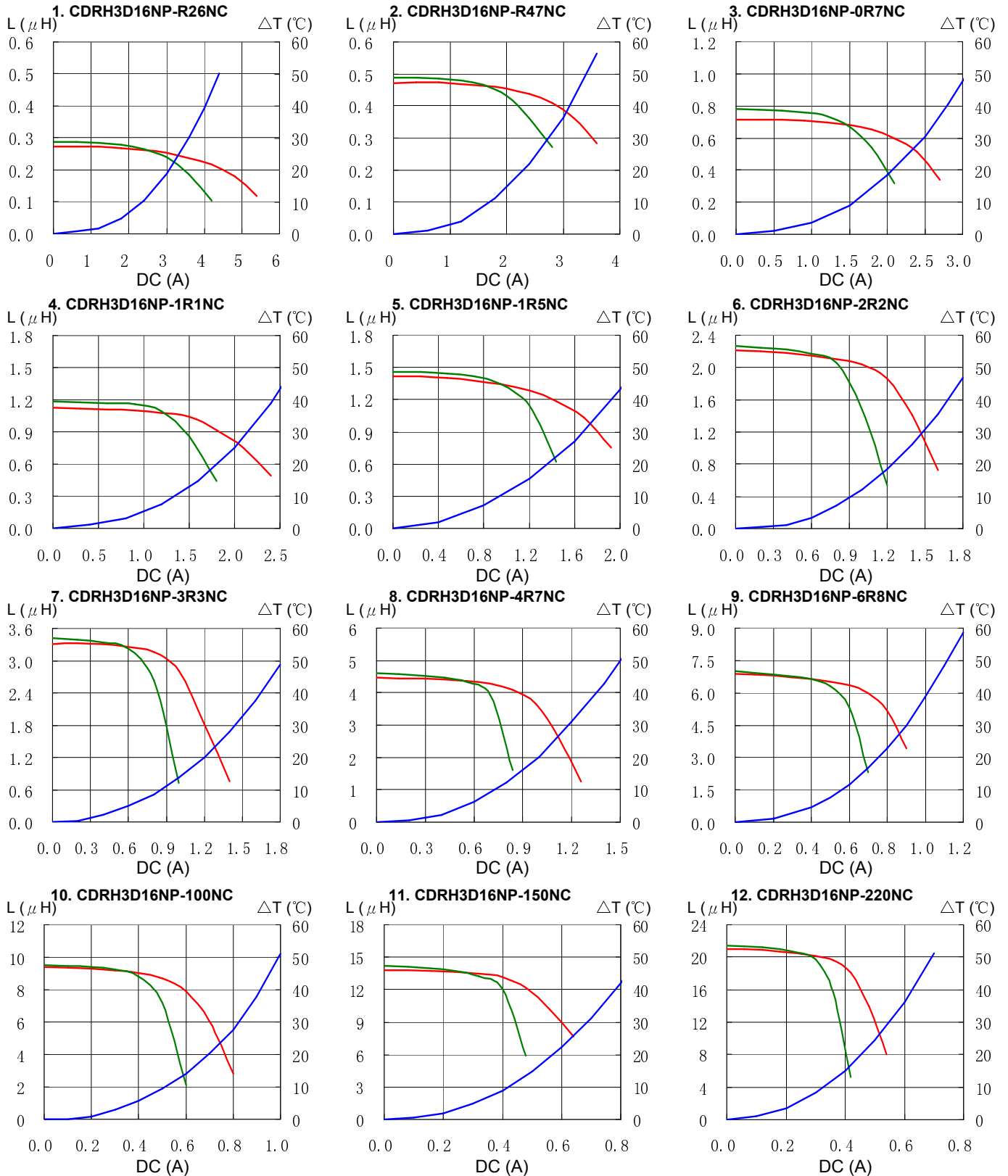
※2. Rated current: The DC current at which the inductance decreases to 65% of its nominal value or when $\Delta t=30^{\circ}\text{C}$, whichever is lower ($T_a=20^{\circ}\text{C}$).

SMD Power Inductor CDRH3D16



Saturation Current & Temperature Rise Graph

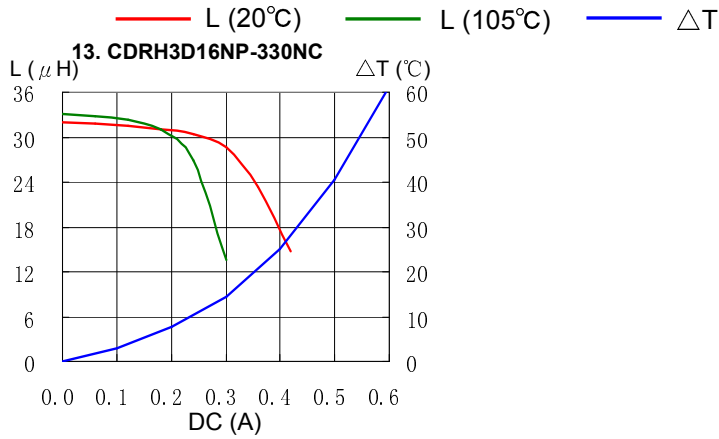
— L (20°C) — L (105°C) — ΔT



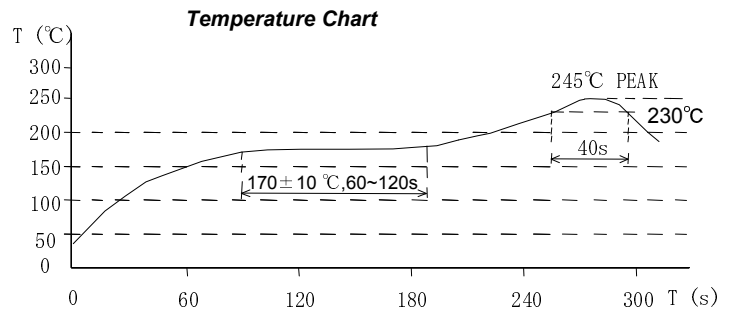
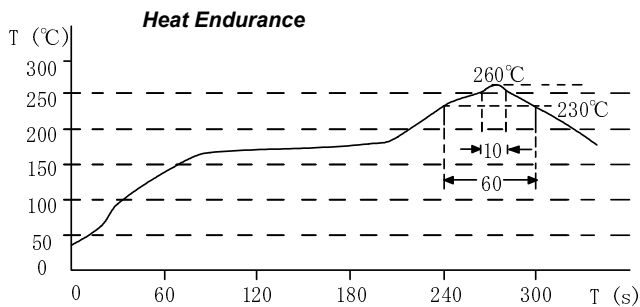
SMD Power Inductor CDRH3D16



Saturation Current & Temperature Rise Graph



Solder Reflow Condition



Please refer to the sales offices on our website - <http://www.sumida.com>

Hong Kong

Tel.+852-2880-6781
FAX.+852-2565-9600
sales@hk.sumida.com

Saitama(Japan)

Tel.+81-48-691-7300
FAX.+81-48-691-7340
sales@jp.sumida.com

Chicago

Tel.+1-847-545-6700
FAX. +1-847-545-6720
sales@us.sumida.com

Shanghai

Tel.+86-21-5836-3299
FAX.+86-21-5836-3266
shanghai.sales@cn.sumida.com

Seoul

Tel.+82-2-6237-0777
FAX.+82-2-6237-0778
sales@kr.sumida.com

Oberzell

Tel.+49-8591-937-0
FAX. +49-8591-937-103
contact@eu.sumida.com

Shenzhen

Tel.+86-755-8291-0228
FAX.+86-755-8291-0338
shenzhen.sales@cn.sumida.com

Singapore

Tel.+65-6296-3388
FAX.+65-6841-4426
sales@sg.sumida.com

Neumarkt

Tel.+49-9181-4509-110
FAX. +49-9181-4509-310
infocomp@eu.sumida.com

Taipei

Tel.+886-2-8751-2737
FAX.+886-2-8751-2738
sales@tw.sumida.com

San Jose

Tel.+1-408-321-9660
FAX.+1-408-321-9308
sales@us.sumida.com

Looking for pricing, stock, or lifecycle information?

Click below to explore more details on WIN SOURCE:

- ⊖ [View CDRH3D16NP-220NC on WIN SOURCE](#)
- ⊖ [Sumida America Components Inc. Information](#)

Optimize Your Supply Chain with WIN SOURCE Solutions

- ✓ Global Sourcing Solution
- ✓ Obsolete Management
- ✓ Cost Control Management
- ✓ Shortage Management
- ✓ Alternative Solution
- ✓ Excess Inventory Management