



THE DATASHEET OF FAL11

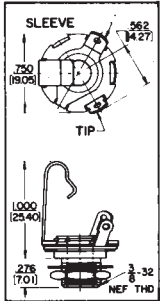


SWITCHCRAFT, INC. 5555 N. Elston Ave.
Chicago, IL 60630 • 773 792-2700 • FAX: 773 792-2129

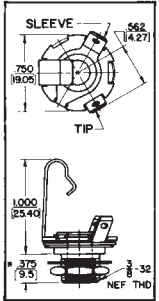
www.switchcraft.com

1/4" PHONE JACKS

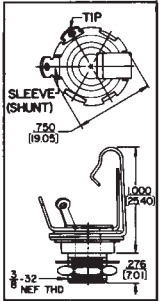
Littel Jax® Jacks



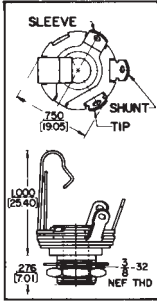
11, L-11, C-11, S-11



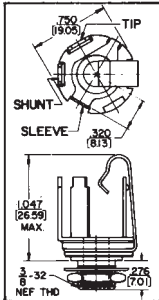
FA-11, FAL-11
*276 in. for No. FA-11



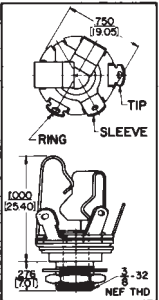
12



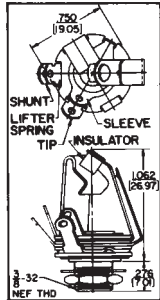
12A, L-12A,
S-12A, SC-12A



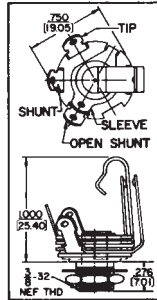
PC-12A



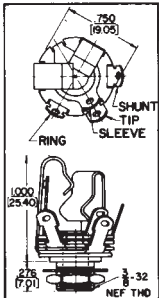
12B, C-12B,
S-12B, SC-12B



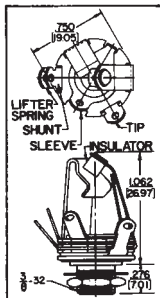
13



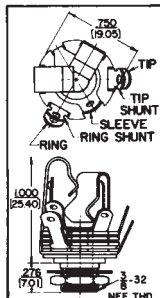
13A



13B, S-13B



13E



14B